

# PRODUCT INFORMATION PACKET



Model No: 171625.00

Catalog No: 171625.00

**\*\*OBSOLETE, REPLACED BY 184TTFCD6005\*\*** 5 HP 3600 575 TEFC 184T PREM EFF  
General Purpose Motors



Regal and Leeson are trademarks of Regal Rexnord Corporation or one of its affiliated companies.  
©2021 Regal Rexnord Corporation, All Rights Reserved. MC017097E



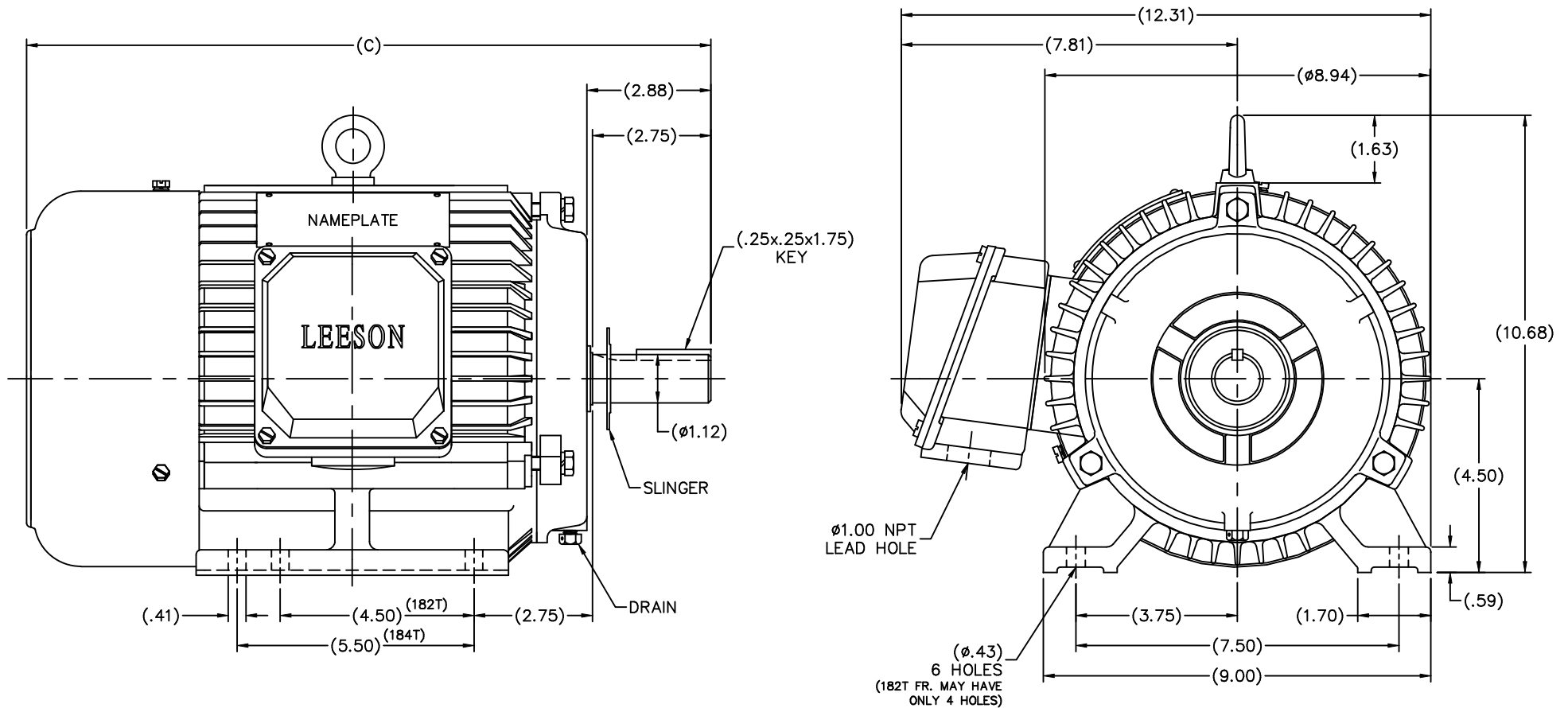


## Nameplate Specifications

Output HP	5 Hp	Output KW	3.7 kW
Frequency	60 Hz	Voltage	575 V
Current	4.7 A	Speed	3510 rpm
Service Factor	1.15	Phase	3
Efficiency	88.5 %	Power Factor	89.5
Duty	Continuous	Insulation Class	F
Design Code	B	KVA Code	J
Frame	184T	Enclosure	Totally Enclosed Fan Cooled
Thermal Protection	No	Ambient Temperature	40 °C
Drive End Bearing Size	6205	Opp Drive End Bearing Size	6205
UL	Recognized	CSA	Y
CE	Y	IP Code	43
Number of Speeds	1		

## Technical Specifications

Electrical Type	Squirrel Cage Induction Run	Starting Method	Across The Line
Poles	2	Rotation	Reversible
Resistance Main	2.32 Ohms	Mounting	Rigid Base
Motor Orientation	Horizontal	Drive End Bearing	Ball
Opp Drive End Bearing	Ball	Frame Material	Cast Iron
Shaft Type	T	Overall Length	16.80 in
Shaft Diameter	1.125 in	Shaft Extension	2.75 in
Assembly/Box Mounting	F1/F2 CAPABLE		
Connection Drawing	005102.01	Outline Drawing	SS622136LE-184T



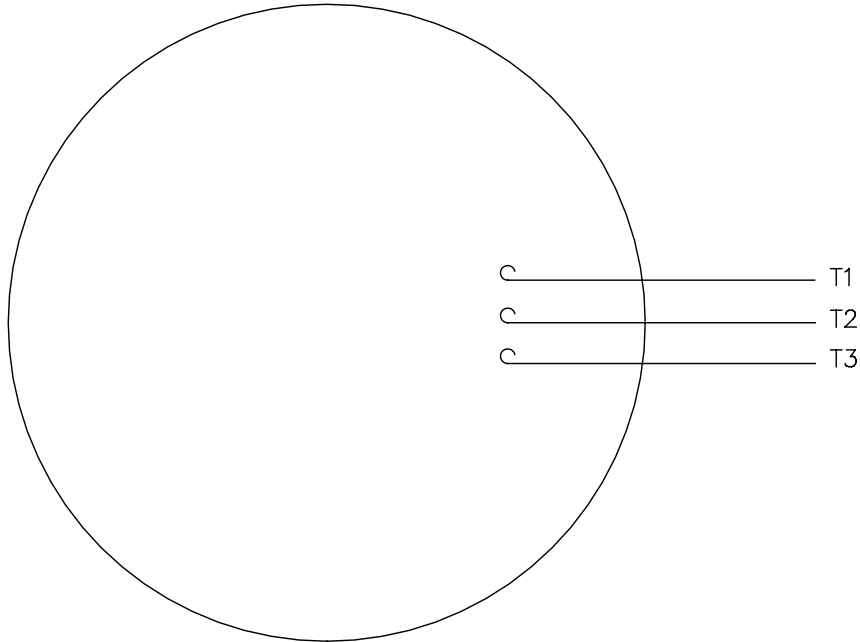
(MAY NOT BE DRAWN TO SCALE)

182T	16.14
184T	16.80
FRAME	C

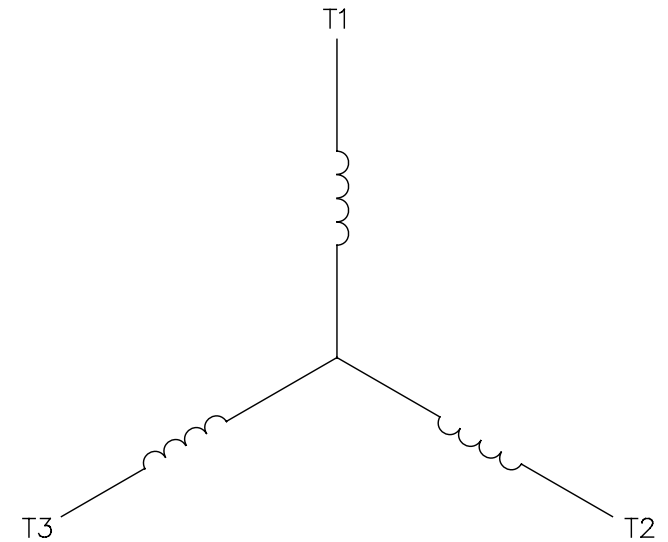
			TOLERANCES UNLESS SPECIFIED		<b>LEESON</b> ELECTRIC MOTORS GEARMOTORS AND DRIVES	DRAWN MSG 06-01-2006	
			DEC.	INCHES		CHK	ML 06-03-2006
			.X	±.1		APPD	SB 06-08-2006
			.XX	±.03	TITLE OUTLINE	SCALE	7-16
			.XXX	±.005	182T/184T FR. - TEFC - RIGID	REF	
			.XXXX	±.0005	MAT'L	FMF	HEBEI
NO.	REVISION	BY & DATE	CHK	ANG	FINISH 171623.60 & 171630.60	PREV	
THIS DRAWING IN DESIGN AND DETAIL IS OUR PROPERTY AND MUST NOT BE USED EXCEPT IN CONNECTION WITH OUR WORK ALL RIGHTS OF DESIGN AND INVENTION ARE RESERVED THIS IS AN ELECTRONICALLY GENERATED DOCUMENT - DO NOT SCALE THIS PRINT			RFP	CAD FILE ss622136le	SIZE	DRAWING NO.	PAGE OF
			DIST	WA	B	SS622136LE	REV.

005102-01


VIEW FROM OUTSIDE OF MOTOR AT SWITCH END.



LINE LEADS

CONNECT LEADS AS FOLLOWS  
FOR FOUR CONDUCTOR CORD ( )

CORD	L1 (RED)	L2 (WHITE)	L3 (BLACK)	(GREEN)
MOTOR	T1	T2	T3	GROUND

NO.	REVISION	BY & DATE	CHK	ANG	TOLERANCES UNLESS SPECIFIED		TITLE	DRAWN	CHK	APPD	SCALE	REF	FMP	PREV
					DEC.	INCHES								
					.X	±.1								
08	UPDATED TO REGAL LOGO	SAJ 06/26/15	AJY	.XX	±.01		EXTERNAL WIRING DIAGRAM TYPE "T" W/O PROTECTOR	 <b>Regal Beloit America, Inc.</b>	JRW 9/11/75	JCW 9/11/75	1=1	W-T6343-6	6T17FB7	
07	UPDATED TO CURRENT STANDARDS	DBT 5/30/97		.XXX	±.005									
06	REDRAWN ON CAD; ADDED DECAL NUMBER	SAW 1/24/95		.XXXX	±.0005									
							MAT'L. DECAL - 004169							
							FINISH							
THIS DRAWING IN DESIGN AND DETAIL IS OUR PROPERTY AND MUST NOT BE USED EXCEPT IN CONNECTION WITH OUR WORK ALL RIGHTS OF DESIGN AND INVENTION ARE RESERVED THIS IS AN ELECTRONICALLY GENERATED DOCUMENT - DO NOT SCALE THIS PRINT					RFP	5/1/02	CAD FILE	00510201	SIZE	DRAWING NO.			REV.	
					DIST	BRF-NLV								
									A	005102-01			08	