

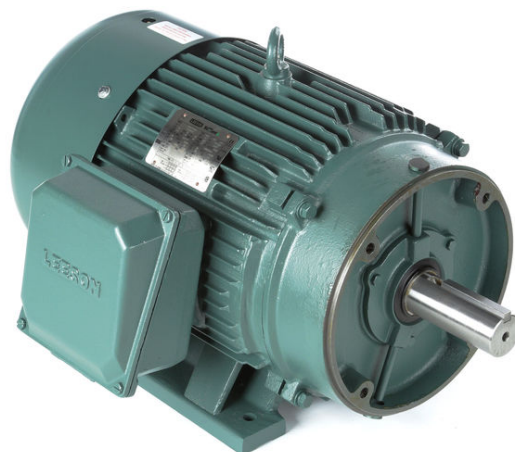
# PRODUCT INFORMATION PACKET



Model No: 171593.00

Catalog No: 171593.00

General Purpose Motor, 40 & 30 HP, 3 Ph, 60 & 50 Hz, 208-230/460 & 190/380 V, 1800 & 1500 RPM,  
324TC Frame, TEFC



Regal and Leeson are trademarks of Regal Rexnord Corporation or one of its affiliated companies.

©2023 Regal Rexnord Corporation, All Rights Reserved. MC017097E



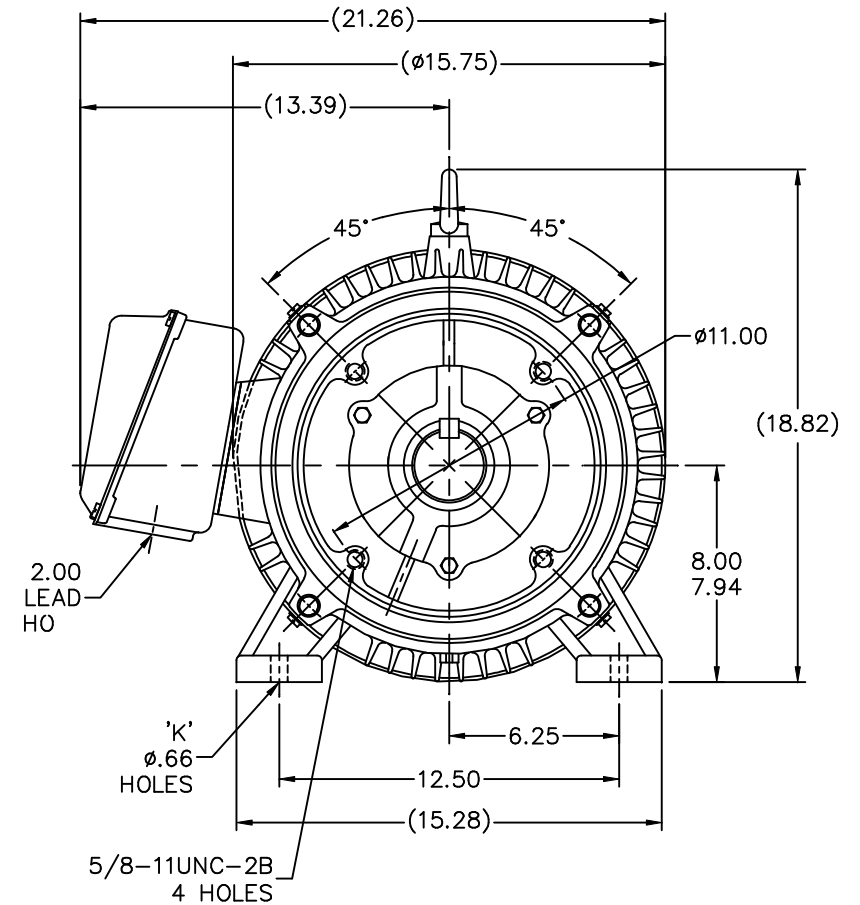
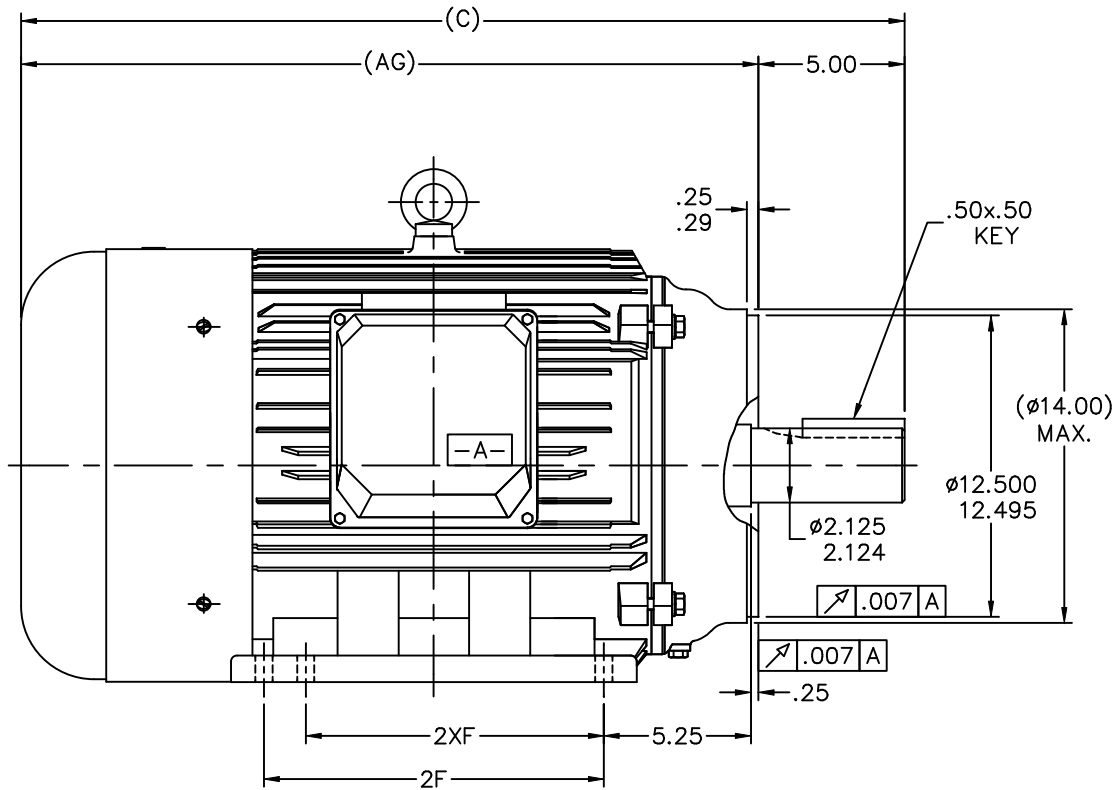


## Nameplate Specifications

Phase	3	Output HP	40 & 30 Hp
Output KW	30.0 & 22.4 kW	Voltage	208-230/460 & 190/380 V
Speed	1780 & 1481 rpm	Service Factor	1.15 & 1.15
Frame	324TC	Enclosure	Totally Enclosed Fan Cooled
Thermal Protection	No Protection	Efficiency	94.1 & 93.6 %
Ambient Temperature	40 °C	Frequency	60 & 50 Hz
Current	99-95/47.5 & 84/42 A	Power Factor	86
Duty	Continuous	Insulation Class	F
Design Code	B	KVA Code	G
Drive End Bearing Size	6312	Opp Drive End Bearing Size	6312
UL	Recognized	CSA	Y
CE	Y	IP Code	43
Number of Speeds	1		

## Technical Specifications

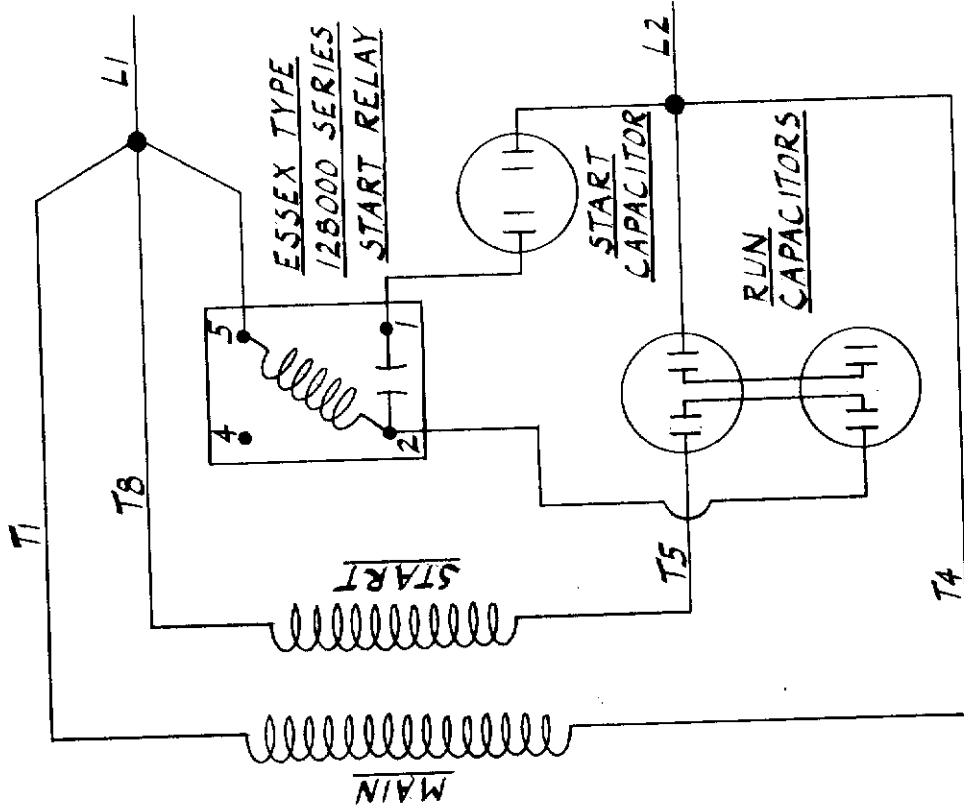
Electrical Type	Squirrel Cage Induction Run	Starting Method	Wye Start Delta Run
Poles	4	Rotation	Reversible
Resistance Main	.042 Ohms	Mounting	Rigid Base
Motor Orientation	Horizontal	Drive End Bearing	Ball
Opp Drive End Bearing	Ball	Frame Material	Cast Iron
Shaft Type	T	Overall Length	29.53 in
Shaft Diameter	2.125 in	Shaft Extension	5 in
Assembly/Box Mounting	F1/F2 CAPABLE		
Outline Drawing	SS622046LE	Connection Drawing	00517302



NOT DRAWN TO SCALE

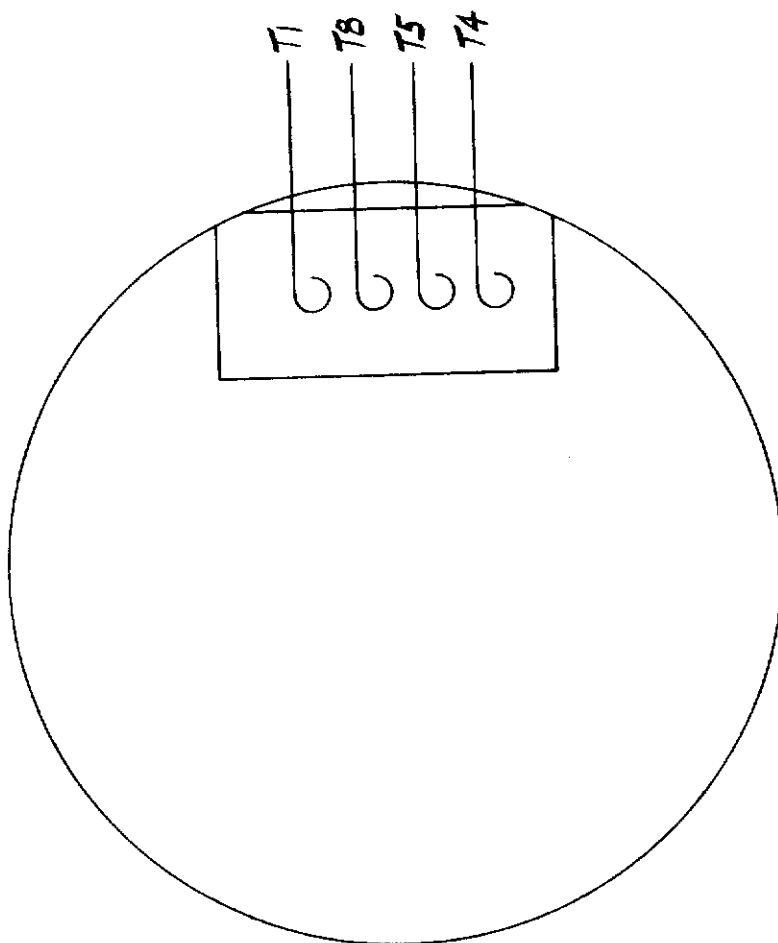
									TOLERANCES UNLESS SPECIFIED			ELECTRIC MOTORS GEARMOTORS AND DRIVES	DRAWN MSG 08-11-2005		
									DEC.	INCHES			CHK	ML	08-12-2005
									.X	±.1			APPD	LMC	08-24-2005
									.XX	±.03			SCALE 1=2		
									.XXX	±.005			REF		
									.XXXX	±.0005			FMF		
									NO.	REVISION	BY & DATE	CHK	ANG	±7'30"	FINISH
									THIS DRAWING IN DESIGN AND DETAIL IS OUR PROPERTY AND MUST NOT BE USED EXCEPT IN CONNECTION WITH OUR WORK ALL RIGHTS OF DESIGN AND INVENTION ARE RESERVED THIS IS AN ELECTRONICALLY GENERATED DOCUMENT - DO NOT SCALE THIS PRINT			RFP	CAD FILE ss622046le		
												DIST	LB		
DASH	FRAME	C	AG	B	2F	2XF	K	BS				SIZE	DRAWING NO.	PAGE	OF
---	N324TC-4	29.53	24.53	---	10.50	---	4	---				B	SS622046LE		
---	N326TC-4	31.02	26.02	---	12.00	10.50	6	---				REV.			

C.C.W. ROTATION SHOWN  
FOR C.W. INTERCHANGE T5 & T8



**LEESON ELECTRIC CORPORATION**  
Grafton, Wisconsin 53024

TITLE	WIRING DIAG.
DRAWN P.G.	9-11-80
CHK'D.	K.S.
APPR.	K.S.
SCALE	N.T.S.
REF.	WK824
FINISH	806201
DRAWING NO.	806201
SIZE	1/2" x 1/2"
DATE	9-11-80
BY	
DATE	



VIEW FROM OUTSIDE OF  
MOTOR AT LEAD END

TYPE "K" W/O PROTECTOR

TOLERANCES UNLESS OTHERWISE SPECIFIED	
DECIMALS	
.00	± .01
.000	± .005
.0000	± .0005
FRACTIONS	
	± 1/64
ANGLES	
	± 1/2°

THIS DRAWING IN DESIGN AND DETAIL IS OUR PROPERTY  
AND MUST NOT BE USED EXCEPT IN CONNECTION WITH OUR WORK  
ALL RIGHTS OF DESIGN OR INVENTION ARE RESERVED