

PRODUCT INFORMATION PACKET



Model No: 171577.60

Catalog No: 171577.60

WATTSaver® General Purpose Motor, 200 & 150 HP, 3 Ph, 60 & 50 Hz, 460 & 380 V, 1200 & 1000 RPM,
447T Frame, DP



Regal and Leeson are trademarks of Regal Rexnord Corporation or one of its affiliated companies.

©2023 Regal Rexnord Corporation, All Rights Reserved. MC017097E



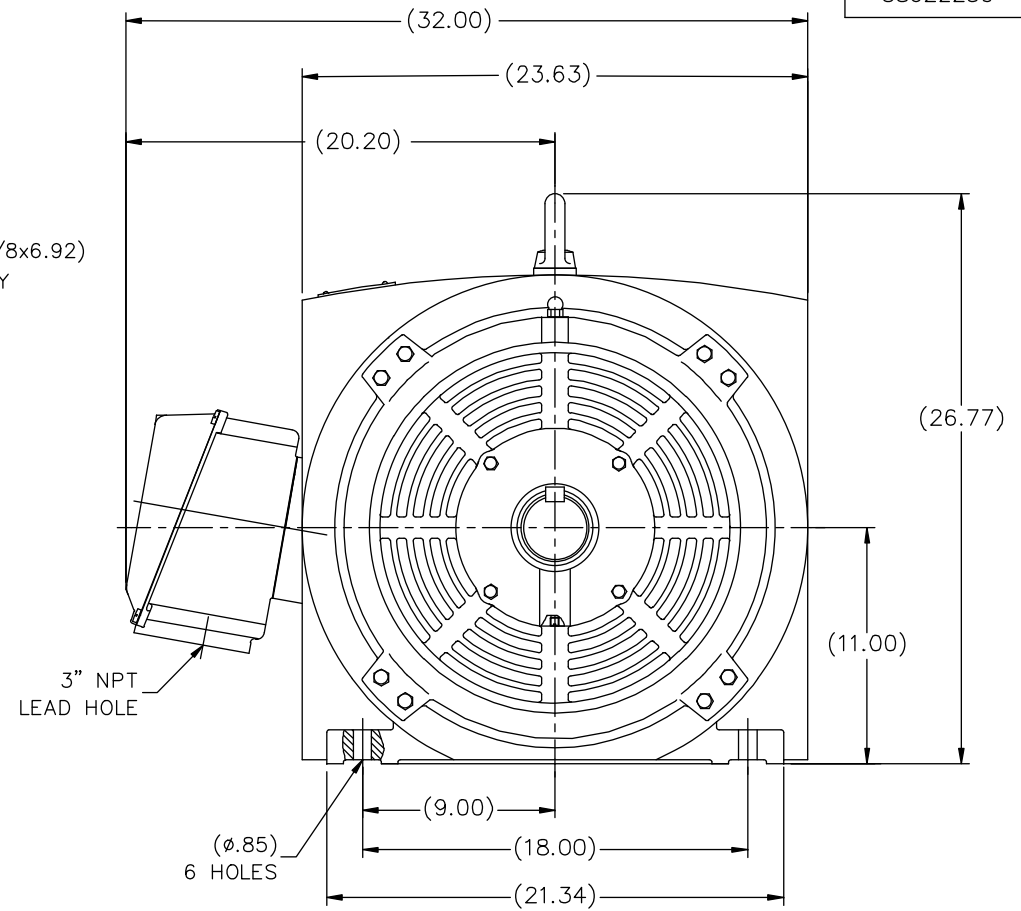
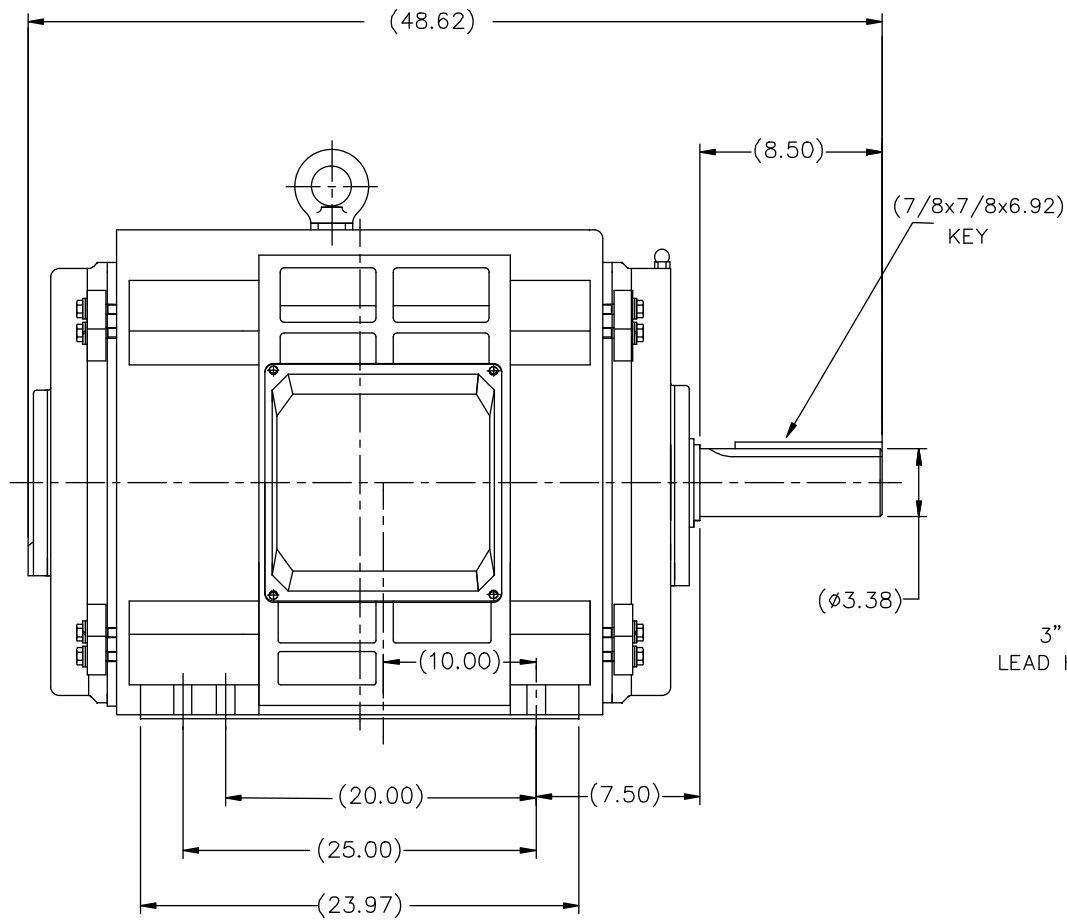


Nameplate Specifications


Phase	3	Output HP	200 & 150 Hp
Output KW	149.0 & 112.0 kW	Voltage	460 & 380 V
Speed	1193 & 995 rpm	Service Factor	1.15 & 1.15
Frame	447T	Enclosure	Drip Proof
Thermal Protection	No Protection	Efficiency	96.2 %
Ambient Temperature	40 °C	Frequency	60 & 50 Hz
Current	239 & 218 A	Power Factor	81
Duty	Continuous	Insulation Class	F
Design Code	B	KVA Code	G
Drive End Bearing Size	6318	Opp Drive End Bearing Size	6317
UL	Recognized	CSA	Y
CE	Y	IP Code	22
Number of Speeds	1		

Technical Specifications

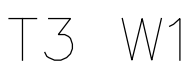
Electrical Type	Squirrel Cage Inverter Rated	Starting Method	Wye Start Delta Run Or Inverter
Poles	6	Rotation	Reversible
Resistance Main	.0145 Ohms	Mounting	Rigid Base
Motor Orientation	Horizontal	Drive End Bearing	Ball
Opp Drive End Bearing	Ball	Frame Material	Cast Iron
Shaft Type	T	Overall Length	48.62 in
Shaft Diameter	3.375 in	Shaft Extension	8.5 in
Assembly/Box Mounting	F1/F2 CAPABLE		
Connection Drawing	00519001	Outline Drawing	SS622230



DRAWING NOT TO SCALE

			TOLERANCES UNLESS SPECIFIED			ELECTRIC MOTORS GEARMOTORS AND DRIVES	DRAWN MOL 09-27-2010	
			DEC.	INCHES			CHK	MOL 09-27-2010
			.X	±.1	TITLE OUTLINE 447T- 6W2-ODP-HEBEI	MAT'L.	APPD	SCALE 1=15
			.XX	±.03				REF 171577
			.XXX	±.005				FMF
			.XXXX	±.0005				PREV
NO.	REVISION	BY & DATE	CHK	ANG	FINISH			
THIS DRAWING IN DESIGN AND DETAIL IS OUR PROPERTY AND MUST NOT BE USED EXCEPT IN CONNECTION WITH OUR WORK ALL RIGHTS OF DESIGN AND INVENTION ARE RESERVED THIS IS AN ELECTRONICALLY GENERATED DOCUMENT - DO NOT SCALE THIS PRINT			RFP	ANG	CAD FILE SS622230	SIZE	DRAWING NO.	PAGE OF
			DIST	ANG		B	SS622230	REV.

005190-01



START
(WYE)

04	ADDED MAT'L (CWLE) PER ECO-0168542
----	------------------------------------

03	ADDED IEC DESIGNATIONS	MOL
02	REMOVED OBSOLETE STATUS	KJH
01	REDRAWN ON CAD	DBT

NO.	REVISION	BY
-----	----------	----

THIS DRAWING IN DESIGN AND DETAIL IS OUR PROPERTY
AND MUST NOT BE USED EXCEPT IN CONNECTION WITH OUR WORK
ALL RIGHTS OF DESIGN AND INVENTION ARE RESERVED

	TOLERANCES UNLESS OTHERWISE SPECIFIED
	DECIMALS

.00	$\pm .01$
.000	$\pm .005$
.0000	$\pm .0005$
FRACTIONS	$\pm 1/64$

ANGLES	$\pm 1/2^\circ$
INCH/MM	

LEESON

DRAWN PG 05/07/82

CH'K'D.	TEM	STAR START – DELTA RUN	
APPR.	05/07/82	MAT'L.	Y-CONNECTED START (CWLE)
SCALE	1=1	DELTA CONNECTED RUN – SINGLE VOLTAGE	

REF.	T2E	FINISH	SIZE	DRAWING NO.
FMF	ELECTRO POWER		A	005190-01



CERTIFICATION DATA SHEET

1051 CHEYENNE AVE.
GRAFTON, WI 53024
PH. 262-377-8810

CATALOG #: 171577.60

CONN. DIAGRAM: 00519001

OUTLINE: SS622230

MOUNTING: F1/F2 CAPABLE

WINDING #: T22806008 DR 2 A

TYPICAL MOTOR PERFORMANCE DATA

HP	KW	SYNC. RPM	F.L. RPM	FRAME	ENCLOSURE	KVA CODE	DESIGN
200&150	149&112	1200	1193&995	447T	DP	G	B

PH	Hz	VOLTS	AMPS	START TYPE	DUTY	INSL	S.F.	AMB°C
3	60/50	460&380	239&218	Y START D RUN OR INV	CONTINUOUS	F5	1.15/1.15	40

FULL LOAD EFF:	96.2	3/4 LOAD EFF:	96.2	1/2 LOAD EFF:	95.8	GTD. EFF	ELEC. TYPE
FULL LOAD PF:	81	3/4 LOAD PF:	78.5	1/2 LOAD PF:	70	95	SQ CAGE INV RATED

F.L. TORQUE	LOCKED ROTOR AMPS	L.R. TORQUE	B.D. TORQUE	F.L. RISE°C
880 LB-FT	1450	1334 LB-FT 152 %	2044 LB-FT 232 %	-

SOUND PRESSURE @ 3 FT.	SOUND POWER	ROTOR WK^2	MAX. WK^2	SAFE STALL TIME	STARTS / HOUR	APPROX. MOTOR WGT
- dBA	- dBA	0 LB-FT^2	- LB-FT^2	15 SEC.	2	0 LBS.

*** SUPPLEMENTAL INFORMATION ***

DE BRACKET TYPE	ODE BRACKET TYPE	MOUNT TYPE	ORIENTATION	SEVERE DUTY	HAZARDOUS LOCATION	DRIP COVER	SCREENS	PAINT
STANDARD	STANDARD	RIGID	HORIZONTAL	FALSE	NONE	FALSE	NONE	BLUE (ENAMEL)

BEARINGS		GREASE	SHAFT TYPE	SPECIAL DE	SPECIAL ODE	SHAFT MATERIAL	FRAME MATERIAL
DE	ODE						
BALL	BALL						
6318	6317	POLYREX EM	T	NONE	NONE	1045 HOT ROLLED (C-204)	CAST IRON

THERMO-PROTECTORS				THERMISTORS	CONTROL	SPACE HEATERS
THERMOSTATS	PROTECTORS	WDG RTDs	BRG RTDs			
NONE	NOT	NONE	NONE	NONE	FALSE	NONE VOLTS

*

N

O

T

E

S

*

INVERTER TORQUE: CONSTANT 2:1

INV. HP SPEED RANGE: NONE

ENCODER: NONE

NONE NONE

NONE NONE PPR

BRAKE: NONE NONE

NONE P/N NONE

NONE NONE

NONE FT-LB NONE V NONE Hz

Data Sheet

Date: 1/23/2018

171577.60



Data @ 460 V

Motor Load Data

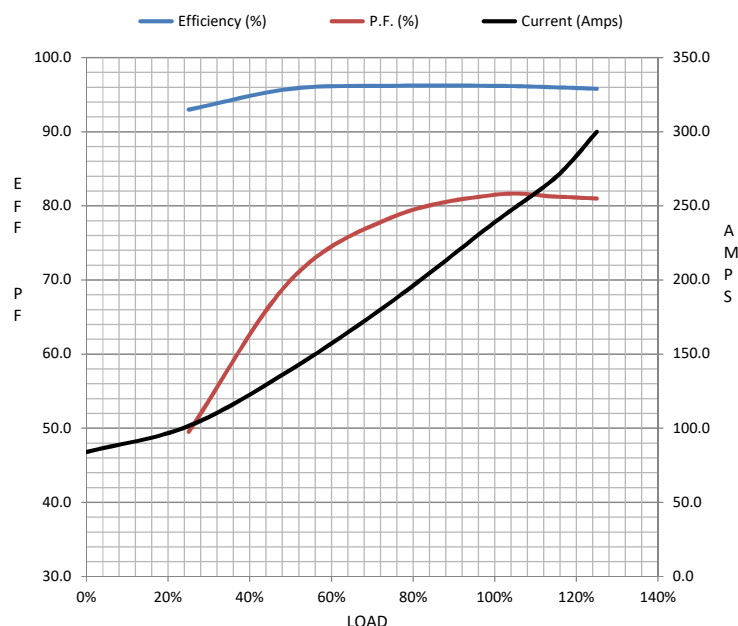
Load	0%	25%	50%	75%	100%	115%	125%	LR	
Current (Amps)	84.0	102	140	186	239	270	300	1,450	
Torque (ft-lb)	0.00	219	439	659	880	991	1,102	1,334	
RPM	1200	1199	1197	1195	1193	1,192	1191	0	
Efficiency (%)		93.0	95.8	96.2	96.2	96.0	95.8		
P.F. (%)	3.5	49.5	70.0	78.5	81.5	81.3	81.0	0.0	

Motor Speed Data

	LR	Pull-Up	BD	Rated	Idle
Speed (RPM)	0	300	1165	1193	1200
Current (Amps)	1,450	1,398	822	239	84.0
Torque (ft-lb)	1,334	1,134	2,044	880	0.00

Information Block

HP	200.0			
Sync. RPM	1200			
Frame	447			
Enclosure	DP			
Construction	TDC			
Voltage	460#380 V			
Frequency	60 Hz			
Design	B			
LR Code letter	G			
Service Factor	1.15			
Temp Rise @ FL	41 °C			
Duty	CONT			
Ambient	40 °C			
Elevation	1,000 feet			
Rotor/Shaft wk²	0.00 Lb-Ft²			
Ref Wdg	T22806008 DR			
Sound Pressure @ 1M	999 dBA			
VFD Rating	CONSTANT 2:1			
Outline Dwg	SS622230			
Conn. Diag	00519001			
Additional Specifications:				
0				
0				
EQUIV CKT (OHMS / PHASE)				
R1	R2	X1	X2	Xm
0.0000	0.0000	0.0000	0.0000	0.0000



Speed - Torque Curve

