

PRODUCT INFORMATION PACKET



Model No: 171518.60

Catalog No: 171518.60

WATTSaver® General Purpose Motor, 350 & 300 HP, 3 Ph, 60 & 50 Hz, 460 & 380 V, 1800 & 1500 RPM,
447T Frame, DP



Regal and Leeson are trademarks of Regal Rexnord Corporation or one of its affiliated companies.

©2023 Regal Rexnord Corporation, All Rights Reserved. MC017097E



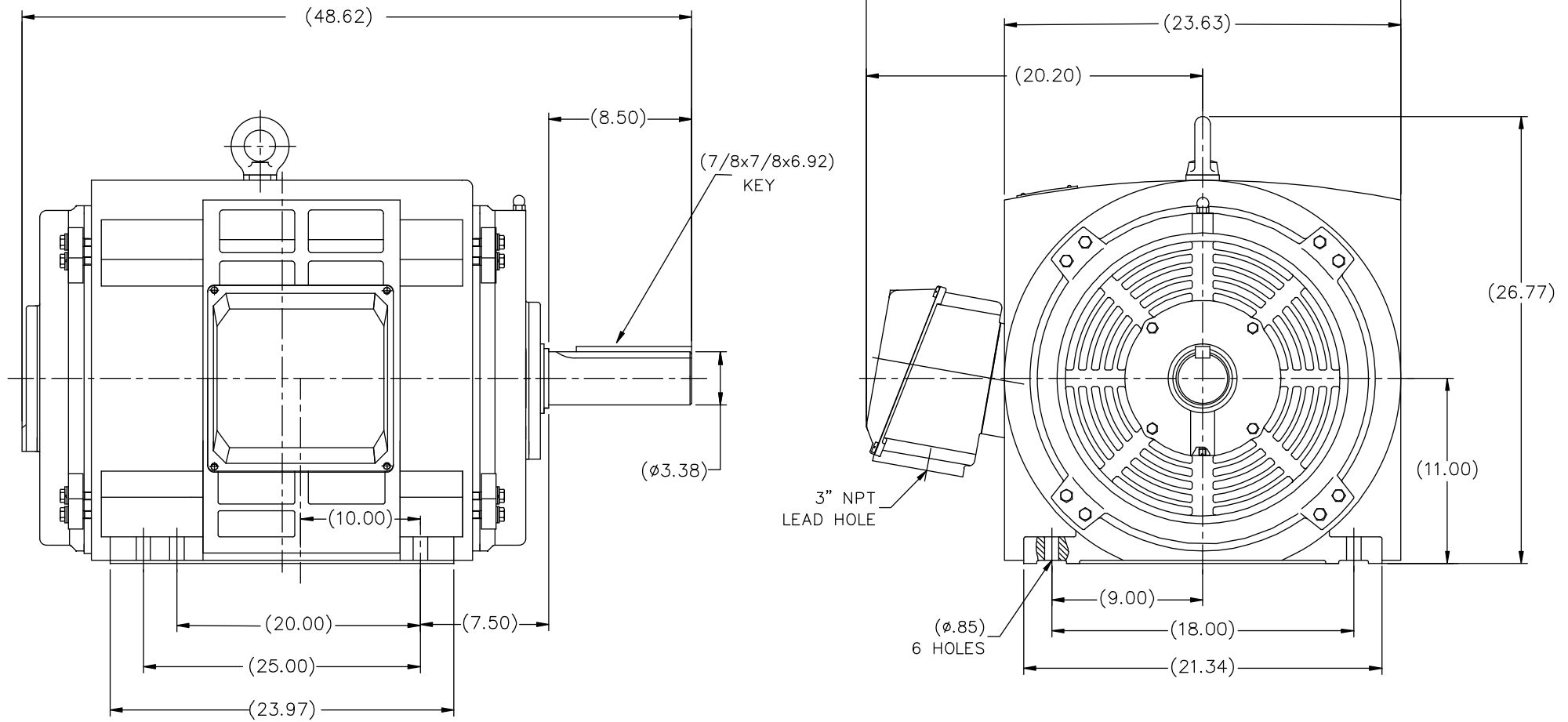


Nameplate Specifications


Phase	3	Output HP	350 & 300 Hp
Output KW	260.0 & 224.0 kW	Voltage	460 & 380 V
Speed	1785 & 1485 rpm	Service Factor	1.15 & 1.15
Frame	447T	Enclosure	Drip Proof
Thermal Protection	No Protection	Efficiency	95.8 & 95.4 %
Ambient Temperature	40 °C	Frequency	60 & 50 Hz
Current	400 & 415 A	Power Factor	85.5
Duty	Continuous	Insulation Class	F
Design Code	B	KVA Code	F
Drive End Bearing Size	6318	Opp Drive End Bearing Size	6314
UL	Recognized	CSA	Y
CE	Y	IP Code	22
Number of Speeds	1		

Technical Specifications

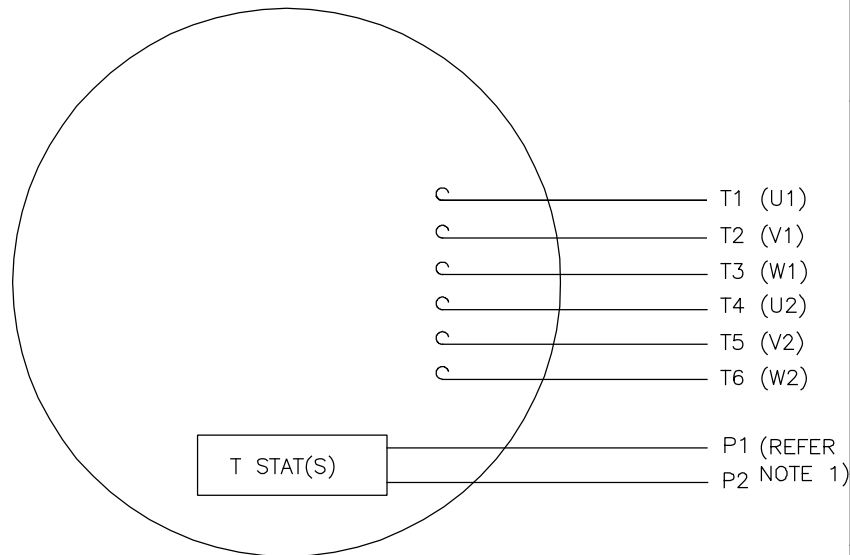
Electrical Type	Squirrel Cage Inverter Rated	Starting Method	Wye Start Delta Run Or Inverter
Poles	4	Rotation	Reversible
Resistance Main	.006 Ohms	Mounting	Rigid Base
Motor Orientation	Horizontal	Drive End Bearing	Ball
Opp Drive End Bearing	Ball	Frame Material	Cast Iron
Shaft Type	T	Overall Length	48.62 in
Shaft Diameter	3.375 in	Shaft Extension	8.5 in
Assembly/Box Mounting	F1/F2 CAPABLE	Inverter Load	CONSTANT 10:1
Outline Drawing	SS622230	Connection Drawing	005190-03



DRAWING NOT TO SCALE

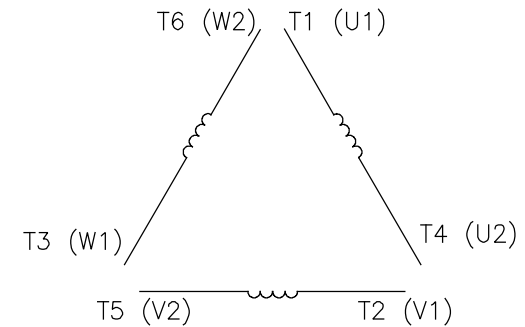
			TOLERANCES UNLESS SPECIFIED			ELECTRIC MOTORS GEARMOTORS AND DRIVES	DRAWN MOL 09-27-2010		
			DEC.	INCHES			CHK	MOL	09-27-2010
			.X	±.1	TITLE OUTLINE 447T- 6W2-ODP-HEBEI	MAT'L.	APPD	SCALE	1=15
			.XX	±.03				REF	171577
			.XXX	±.005				FMF	
			.XXXX	±.0005				PREV	
NO.	REVISION	BY & DATE	CHK	ANG	FINISH				
THIS DRAWING IN DESIGN AND DETAIL IS OUR PROPERTY AND MUST NOT BE USED EXCEPT IN CONNECTION WITH OUR WORK ALL RIGHTS OF DESIGN AND INVENTION ARE RESERVED THIS IS AN ELECTRONICALLY GENERATED DOCUMENT - DO NOT SCALE THIS PRINT			RFP	ANG	FINISH	CAD FILE	SS622230	SIZE	DRAWING NO. PAGE OF REV.
			DIST					B	SS622230

VIEW FROM OUTSIDE OF MOTOR AT SWITCH END

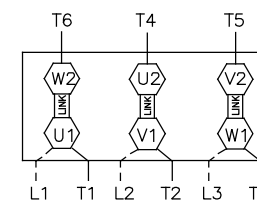
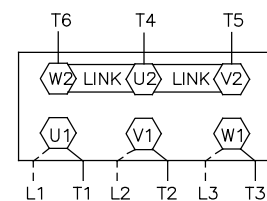


NOTE: 1. USE RED LEADS FOR LEESON CHANNEL
 2. USE 081380 DECAL FOR LB MODELS
 USE 080088 DECAL FOR MT2 MODELS

LINE LEADS



WYE-DELTA CONNECTION, SINGLE VOLTAGE

DELTA RUN
(Δ - CONNECTION)WYE START
(Y - CONNECTION)

NOTE: USE TERMINAL BLOCK WHEN SPECIFIED

	L1	L2	L3	JOIN
START (WYE)	T1 U1	T2 V1	T3 U2	(T4,T5,T6) (U2,V2,W2)
RUN (DELTA)	(T1,T6) (U1,W2)	(T2,T4) (V1,U2)	(T3,T5) (W1,V2)	

DRAWING REVISION A	REVISION BY MVG	DATE 02/15/2018
ECO ECO-0139864	APPROVED BY SR	DATE 02/15/2018
ECO DESCRIPTION UPDATED PER ECO-0139864		

COPYRIGHT REGAL BELOIT AMERICA, INC. ALL RIGHTS RESERVED.
 PROPRIETARY AND CONFIDENTIAL INFORMATION - THIS DOCUMENT IS THE PROPERTY OF
 REGAL BELOIT AMERICA, INC. ("OWNER") AND CONTAINS OWNER'S PROPRIETARY
 INFORMATION. ANY PERSON, CORPORATION OR OTHER FIRM RECEIVING IT IS DEEMED
 BY RECEIVING IT, TO AGREE THAT IT, AND/OR ANY PART OF IT, SHALL NOT BE DISCLOSED
 TO ANY PERSON, CORPORATION OR OTHER ENTITY, DUPLICATED, AND/OR USED, EXCEPT
 AS EXPRESSLY APPROVED IN WRITING IN ADVANCE BY OWNER. THIS DOCUMENT SHALL
 BE RETURNED TO OWNER UPON REQUEST. IT MAY BE SUBJECT TO CERTAIN
 RESTRICTIONS UNDER APPLICABLE EXPORT CONTROL LAWS AND REGULATIONS.

TOLERANCES UNLESS OTHERWISE SPECIFIED			
DEC.	INCH	mm	ANGLE
.X	±0.1	[±2.5]	±0.5°
.XX	±0.02	[±0.51]	
.XXX	±0.005	[±0.127]	
.XXXX	±0.0005	[±0.0127]	
REMOVE BURRS & BREAK SHARP EDGES .003/.015 [0.076/.381]			
CORNER FILLETS .02 [51]			
MACHINED SURFACES $\sqrt{125}$ mm $\sqrt{3.2}$			
mm SHOWN IN [BRACKETS]			

DRAWN BY:
SLDATE:
08/20/15APPROVED BY:
CDDATE:
08/20/15REFERENCE
005190-01THIRD ANGLE
PROJECTION

Regal Beloit America, Inc.

DESCRIPTION

EXT WIRING DIA SINGLE VOLTAGE
STAR START- DELTA RUN

MATERIAL

REFER NOTE 2

SIZE DWG NO

005190-03

A

PROCESS/FINISH

.

SHEET

1



P.O. BOX 8003
WAUSAU, WI 54401-8003
PH. 715-675-3311

DATA VOLTS: 460

CERTIFICATION DATA SHEET

CONN. DIAGRAM: 005190-03

CAT #: 171518.60

OUTLINE: SS622230

WINDING: T22804030

NONE 1

TYPICAL MOTOR PERFORMANCE DATA

HP	KW	SYNC RPM	FL RPM	FRAME	ENCLOSURE	TYPE	KVA CODE	DESIGN
350	261	1800	1785	447T	DP	TDC	F	B

PH	HZ	VOLTS	AMPS	START TYPE	DUTY	INSL	S.F.	AMB	ELEV.
3	60/50	460#380	400&415	Y START D RUN OR INV	CONT	F	1.15	40	3300

F.L. EFF	95.8	3/4 LD EFF	96.2	1/2 LD EFF	95.8	GTD EFF	95.4	ELECT. TYPE	SQ CAGE INV RATED
F.L. PF	85.5	3/4 LD PF	84.0	1/2 LD PF	79.0				

F.L. TORQUE	LR AMPS @ 460 V	L.R. TORQUE	B.D. TORQUE	F.L. RISE (°C)
1,029 LB-FT	2,400	1,740 LB-FT 169%	2,275 LB-FT 221%	65

PRESSURE @ 3	POWER	ROTOR WK²	MAX. LOAD WK²	SAFE STALL TIME	STARTS/HOUR	MOTOR WGT
85 dBA	94 dBA	0.00 LB-FT²	0 LB-FT²	15 SEC.	1	0 LB.

*** SUPPLEMENTAL INFORMATION ***

DE BRACKET TYPE	ODE BRACKET TYPE	MOUNT TYPE	MOTOR ORIENTATION	SEVERE DUTY	HAZARDOUS LOCATION	DRIP COVER	SCREENS	PAINT
STANDARD	STANDARD	RIGID	HORIZONTAL	NO	NONE	NO	NONE	IN - LEESON WATTS

BEARINGS		GREASE	SHAFT TYPE	SPECIAL DE	SPECIAL ODE	SHAFT MATERIAL	FRAME MATERIAL
DE	ODE	POLYREX EM	T	NONE	NONE	1045 HOT ROLLED (C-204)	CAST IRON
BALL	BALL						
6318	6314						

THERMOSTATS	PROTECTORS	WDG RTD's	BRG RTD's	THERMISTORS	CONTROL	SPACE HEATERS
TSTATS (N/C)	NOT	NONE	NONE	NONE	FALSE	NA

R1 (ohms/ph)	R2 (ohms/ph)	X1 (ohms/ph)	X2 (ohms/ph)	Xm (ohms/ph)	VIBRATION (in/sec)	FLOAT
0	0	0	0	0	0.080	ODE

* N O T E S *			INVERTER TORQUE: CONSTANT 10:1 INV. HP SPEED RANGE: NONE
			ENCODER: NONE NONE NONE
			NONE PPR
DATE: 1/17/2018			BRAKE: NONE NONE NONE
			FT-LB: NA VOLTAGE: NONE UL: Y-(LEESON UL REC)
			HZ:

Data Sheet

Date: 1/17/2018

171518.60



Data @ 460 V

Motor Load Data

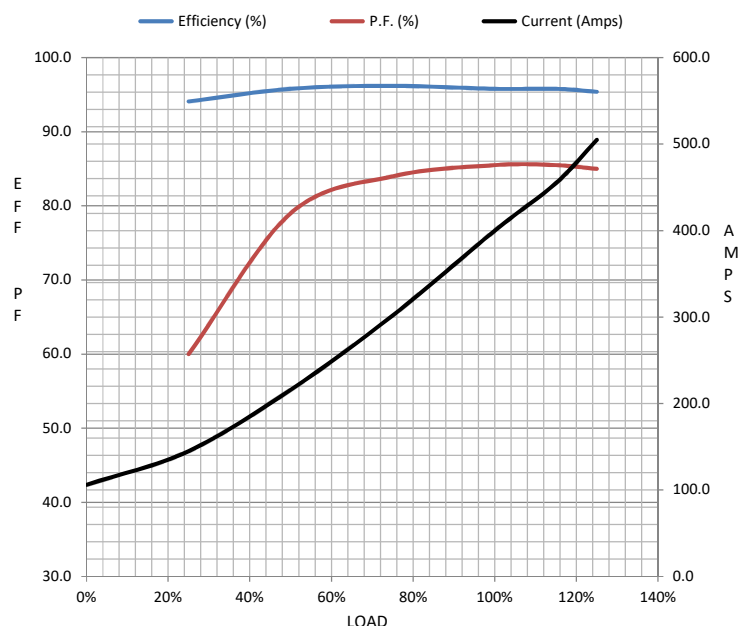
Load	0%	25%	50%	75%	100%	115%	125%	LR	
Current (Amps)	106	145	216	302	400	455	505	2,400	
Torque (ft-lb)	0.00	256	513	770	1,029	1,186	1,290	1,740	
RPM	1800	1798	1795	1790	1785	1,783	1782	0	
Efficiency (%)		94.1	95.8	96.2	95.8	95.8	95.4		
P.F. (%)	4.2	60.0	79.0	84.0	85.5	85.5	85.0	30.0	

Motor Speed Data

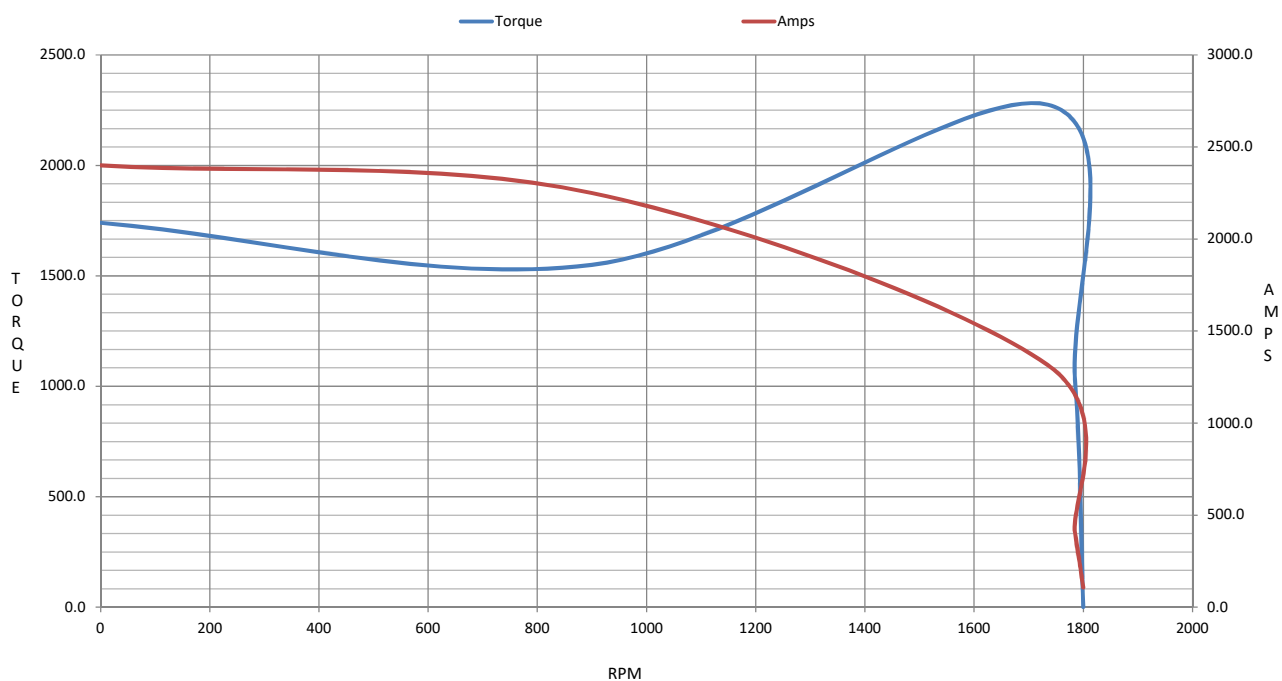
	LR	Pull-Up	BD	Rated	Idle
Speed (RPM)	0	900	1735	1785	1800
Current (Amps)	2,400	2,250	1,315	400	106
Torque (ft-lb)	1,740	1,550	2,275	1,029	0.00

Information Block

HP	350.0			
Sync. RPM	1800			
Frame	449			
Enclosure	DP			
Construction	TDC			
Voltage	460#380 V			
Frequency	60 Hz			
Design	B			
LR Code letter	F			
Service Factor	1.15			
Temp Rise @ FL	65 °C			
Duty	CONT			
Ambient	40 °C			
Elevation	1,000 feet			
Rotor/Shaft wk²	0.00 Lb-Ft²			
Ref Wdg	T22804030 NONE			
Sound Pressure @ 1M	85 dBA			
VFD Rating	CONSTANT 10:1			
Outline Dwg	SS622230			
Conn. Diag	005190-03			
Additional Specifications:				
0				
0				
EQUIV CKT (OHMS / PHASE)				
R1	R2	X1	X2	Xm
0.0000	0.0000	0.0000	0.0000	0.0000



Speed - Torque Curve



EC Declaration of Conformity

The undersigned representing
the manufacturer:

Regal Beloit America
100 East Randolph St.
Wausau, WI 54401

and the authorized representative
established within the Community:

Marathon Electric UK
6F Thistleton Road Ind. Estate
Market Overton
Oakham, Rutland LE15 7PP UK

are committed to providing customers with products that comply with applicable regulations and international protocols to which they are subject, including the requirements of the European Parliament Directive on the Harmonization of the laws relating to electrical equipment designed for use within certain voltage limits (2014/35/EU).

Regal Beloit America declares that the following product(s), to which this declaration relates, are in conformity with the relevant sections of the EC standards listed below.

This statement supersedes any statements previously issued pertaining to the product(s) listed below and is subject to change without notice.

Model No : 171518.60

(Model No. may contain prefix and/or suffix characters)

Catalog No : 171518.60

Rework No : N/A

Directives :

Low Voltage Directive 2014/35/EU

Harmonized Standards Used :

EN 60034-1: 2010 (IEC 60034-1: 2010)

EN 60034-5: 2001/A1:2007 (IEC 60034-5: 2000/A1:2006)

Authorized Representative:



Michael A. Logsdon
Vice President, Technology

Authorized Representative in the Community:



Julian Clark
Marketing Engineer

Created on 09/01/2022

CE 22