

PRODUCT INFORMATION PACKET



Model No: 171647.60

Catalog No: 171647.60

WATTSaver® General Purpose Motor, 2 & 1.50 HP, 3 Ph, 60 & 50 Hz, 208-230/460 & 190/380 V,
1800 & 1500 RPM, 145T Frame, TEFC



Regal and Leeson are trademarks of Regal Rexnord Corporation or one of its affiliated companies.

©2023 Regal Rexnord Corporation, All Rights Reserved. MC017097E



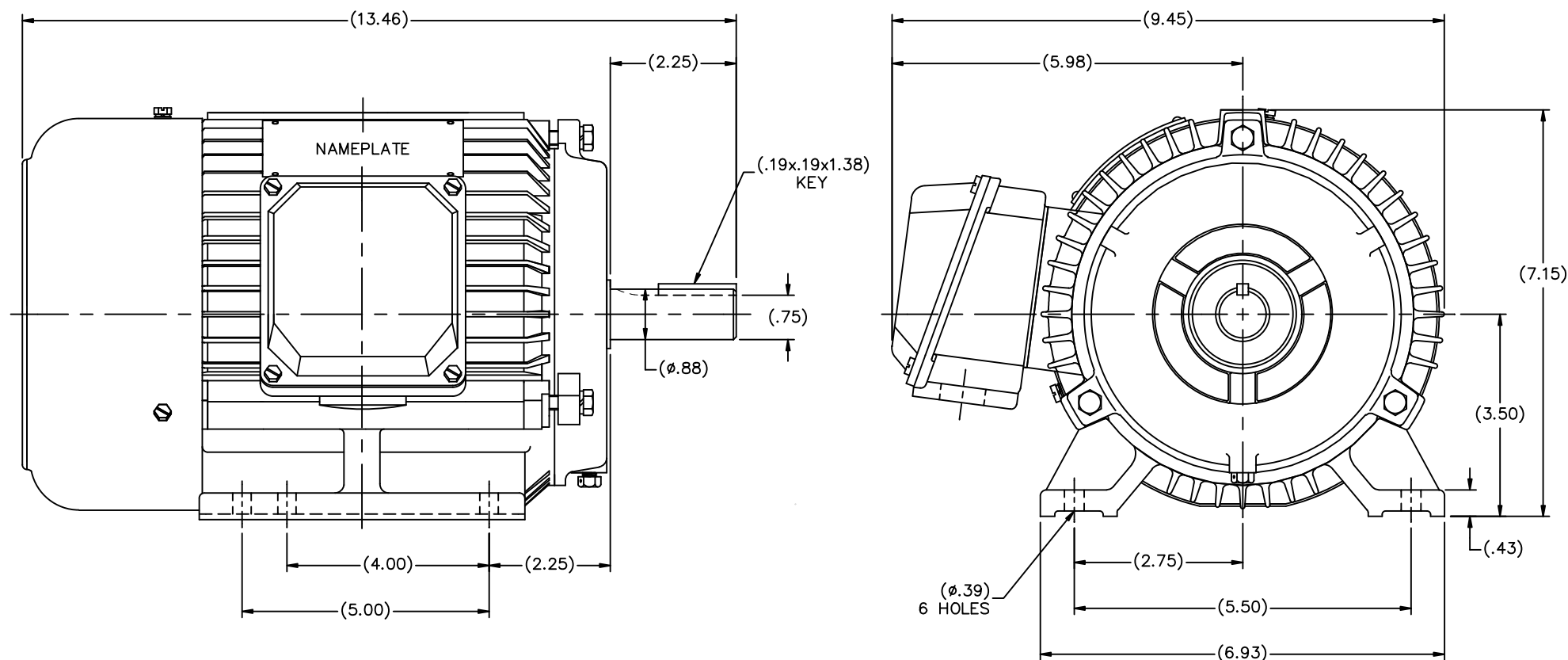


Nameplate Specifications


Phase	3	Output HP	2 & 1.50 Hp
Output KW	1.5 & 1.1 kW	Voltage	208-230/460 & 190/380 V
Speed	1745 & 1450 rpm	Service Factor	1.15 & 1.15
Frame	145T	Enclosure	Totally Enclosed Fan Cooled
Thermal Protection	No Protection	Efficiency	86.5 & 86.5 %
Ambient Temperature	40 °C	Frequency	60 & 50 Hz
Current	6.4-6/3 & 5.6/2.8 A	Power Factor	72
Duty	Continuous	Insulation Class	F
Design Code	B	KVA Code	K
Drive End Bearing Size	6205	Opp Drive End Bearing Size	6205
UL	Recognized	CSA	Y
CE	Y	IP Code	43
Number of Speeds	1		

Technical Specifications

Electrical Type	Squirrel Cage Inverter Rated	Starting Method	Line Or Inverter
Poles	4	Rotation	Reversible
Resistance Main	6.324 Ohms	Mounting	Rigid Base
Motor Orientation	Horizontal	Drive End Bearing	Ball
Opp Drive End Bearing	Ball	Frame Material	Cast Iron
Shaft Type	T	Overall Length	13.46 in
Shaft Diameter	0.875 in	Shaft Extension	2.25 in
Assembly/Box Mounting	F1/F2 CAPABLE	Inverter Load	CONSTANT 10:1
Outline Drawing	SS622146	Connection Drawing	5010.01



(DRAWING MAY NOT BE TO SCALE)

				TOLERANCES UNLESS SPECIFIED			DRAWN MSG 06-28-2006	
				DEC.	INCHES		CHK ML 06-28-2006	
				.X	±.1	REGAL-BELOIT CORPORATION TITLE OUTLINE N140T-4G - STD. BRKT	APPD SB 06-28-2006	
				.XX	±.03		SCALE 5=8	
				.XXX	±.005		REF	
				.XXXX	±.0005		FMF MU75330	
01	CHANGE CO FROM MARATHON TO RBC	ISAAC 10-3802	TF 10/5/2010	CHK	ANG ±7°30"	FINISH	PREV	
NO. REVISION				BY & DATE				
THIS DRAWING IN DESIGN AND DETAIL IS OUR PROPERTY AND MUST NOT BE USED EXCEPT IN CONNECTION WITH OUR WORK. ALL RIGHTS OF DESIGN AND INVENTION ARE RESERVED. THIS IS AN ELECTRONICALLY GENERATED DOCUMENT - DO NOT SCALE THIS PRINT				RFP	09-25-2006	CAD FILE SS622146	SIZE B	DRAWING NO. PAGE OF REV. SS622146 01
				DIST	MAR-WA-WP			



CERTIFICATION DATA SHEET

1051 CHEYENNE AVE.
GRAFTON, WI 53024
PH. 262-377-8810

CATALOG #: 171647.60

CONN. DIAGRAM: 5010.01

OUTLINE: SS622146

MOUNTING: F1/F2 CAPABLE

WINDING #: T06804007 3

TYPICAL MOTOR PERFORMANCE DATA

HP	kW	SYNC. RPM	F.L. RPM	FRAME	ENCLOSURE	KVA CODE	DESIGN
2&1 1/2	1.49&1.12	1800	1745&1450	145T	TEFC	K	B

PH	Hz	VOLTS	AMPS	START TYPE	DUTY	INSL	S.F.	AMB°C
3	60/50	208-230/460&190/380	6.4-6/3&5.6/2.8	LINE OR INVERTER	CONTINUOUS	F5	1.15/1.15	40

FULL LOAD EFF:	86.5&86.5	3/4 LOAD EFF:	86.5	1/2 LOAD EFF:	85.5	GTD. EFF	ELEC. TYPE
FULL LOAD PF:	72&70.5	3/4 LOAD PF:	63.5	1/2 LOAD PF:	51	85.5	SQ CAGE INV RATED

F.L. TORQUE	LOCKED ROTOR AMPS	L.R. TORQUE	B.D. TORQUE	F.L. RISE°C
6 LB-FT	42.4 / 21.2	18.5 LB-FT 308 %	21.1 LB-FT 352 %	45

SOUND PRESSURE @ 3 FT.	SOUND POWER	ROTOR WK^2	MAX. WK^2	SAFE STALL TIME	STARTS / HOUR	APPROX. MOTOR WGT
44.5 dBA	54.5 dBA	- LB-FT^2	- LB-FT^2	20 SEC.	2	60 LBS.

*** SUPPLEMENTAL INFORMATION ***

DE BRACKET TYPE	ODE BRACKET TYPE	MOUNT TYPE	ORIENTATION	SEVERE DUTY	HAZARDOUS LOCATION	DRIP COVER	SCREENS	PAINT
STANDARD	STANDARD	RIGID	HORIZONTAL	FALSE	NONE	FALSE	NONE	BLUE (ENAMEL)

BEARINGS		GREASE	SHAFT TYPE	SPECIAL DE	SPECIAL ODE	SHAFT MATERIAL	FRAME MATERIAL
DE	ODE						
BALL	BALL	POLYREX EM	T	NONE	NONE	AISI 1045 (C-240)	CAST IRON
6205	6205						

THERMO-PROTECTORS				THERMISTORS	CONTROL	SPACE HEATERS
THERMOSTATS	PROTECTORS	WDG RTDs	BRG RTDs			
NONE	NOT	NONE	NONE	NONE	FALSE	NONE VOLTS

*

N

O

T

E

S

INVERTER TORQUE: CONSTANT 10:1

INV. HP SPEED RANGE: NONE

ENCODER: NONE

NONE NONE

NONE NONE PPR

BRAKE: NONE NONE

NONE P/N NONE

NONE NONE

NONE FT-LB NONE V NO BRAKE Hz

Data Sheet

Date: 1/19/2018

171647.60



Data @ 460 V

Motor Load Data

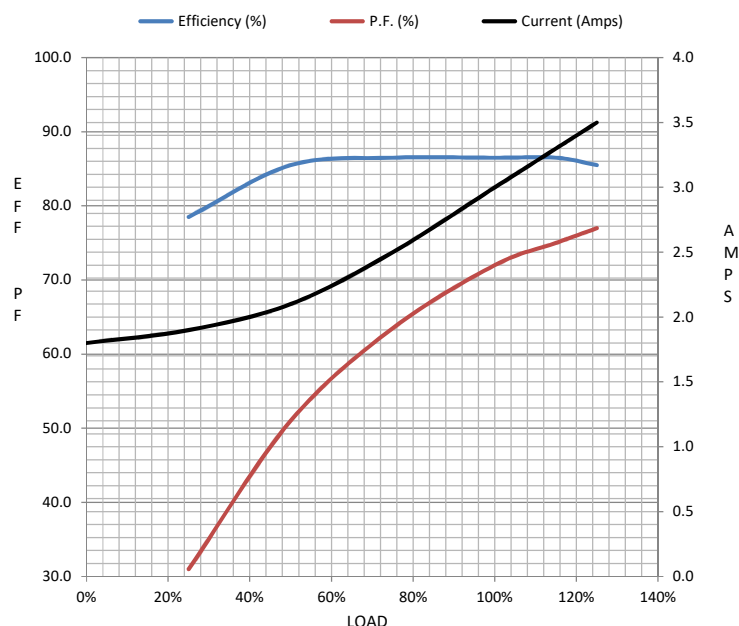
Load	0%	25%	50%	75%	100%	115%	125%	LR	
Current (Amps)	1.80	1.90	2.10	2.50	3.0	3.3	3.5	21.2	
Torque (ft-lb)	0.00	1.50	3.0	4.8	6.0	7.0	7.6	18.5	
RPM	1800	1785	1775	1760	1745	1.735	1725	0	
Efficiency (%)		78.5	85.5	86.5	86.5	86.5	85.5		
P.F. (%)	6.5	31.0	51.0	63.5	72.0	75.0	77.0	54.5	

Motor Speed Data

	LR	Pull-Up	BD	Rated	Idle
Speed (RPM)	0	315	1285	1745	1800
Current (Amps)	21.2	20.5	13.4	3.0	1.80
Torque (ft-lb)	18.5	16.0	21.1	6.0	0.00

Information Block

HP	2.0			
Sync. RPM	1800			
Frame	145			
Enclosure	TEFC			
Construction	TFC			
Voltage	208-230/460#190/380	V		
Frequency	60	Hz		
Design	B			
LR Code letter	K			
Service Factor	1.15			
Temp Rise @ FL	45	° C		
Duty	CONT			
Ambient	40	° C		
Elevation	1,000	feet		
Rotor/Shaft wk²	0.00	Lb-Ft²		
Ref Wdg	T06804007 NONE			
Sound Pressure @ 1M	45	dBA		
VFD Rating	CONSTANT 10:1			
Outline Dwg	SS622146			
Conn. Diag	5010.01			
Additional Specifications:				
0				
0				
EQUIV CKT (OHMS / PHASE)				
R1	R2	X1	X2	Xm
0.0000	0.0000	0.0000	0.0000	0.0000



Speed - Torque Curve

