

PRODUCT INFORMATION PACKET



Model No: 171322.60

Catalog No: 171322.60

WATTSaver® General Purpose Motor, 5 & 5 HP, 3 Ph, 60 & 50 Hz, 208-230/460 & 190/380 V,
1800 & 1500 RPM, 184T Frame, TEFC



Regal and Leeson are trademarks of Regal Rexnord Corporation or one of its affiliated companies.

©2023 Regal Rexnord Corporation, All Rights Reserved. MC017097E



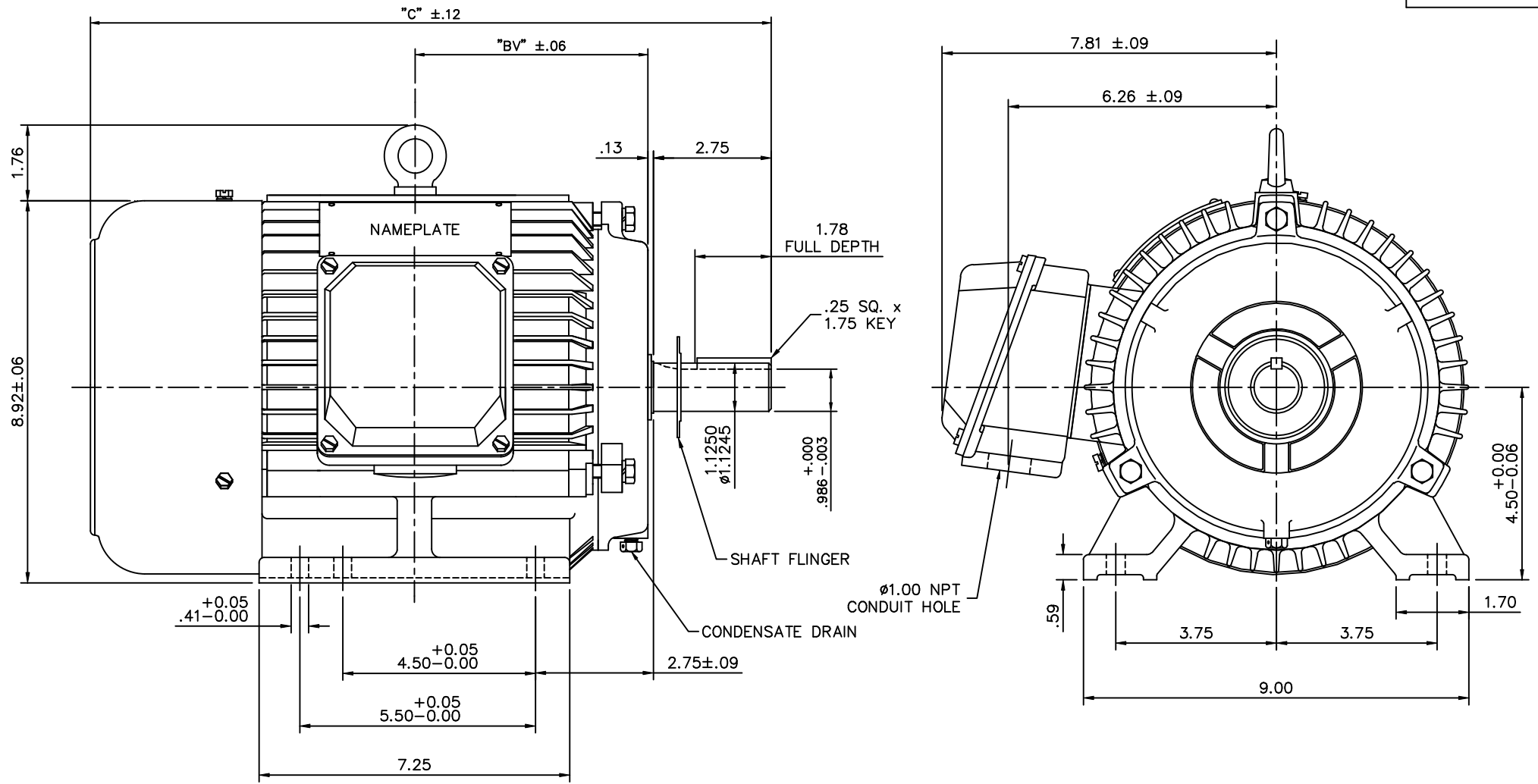


Nameplate Specifications

Phase	3	Output HP	5 & 5 Hp
Output KW	3.7 & 3.7 kW	Voltage	208-230/460 & 190/380 V
Speed	1760 & 1445 rpm	Service Factor	1.15 & 1.15
Frame	184T	Enclosure	Totally Enclosed Fan Cooled
Thermal Protection	Thermostat	Efficiency	89.5 & 86.5 %
Ambient Temperature	40 °C	Frequency	60 & 50 Hz
Current	13.8-12.8/6.4 & 15.4/7.7 A	Power Factor	81.1
Duty	Continuous	Insulation Class	F
Design Code	B	KVA Code	J
Drive End Bearing Size	6206	Opp Drive End Bearing Size	6205
UL	Recognized	CSA	Y
CE	Y	IP Code	43
Number of Speeds	1		

Technical Specifications

Electrical Type	Squirrel Cage Inverter Rated	Starting Method	Line Or Inverter
Poles	4	Rotation	Reversible
Resistance Main	2.019 Ohms	Mounting	Rigid Base
Motor Orientation	Horizontal	Drive End Bearing	Ball
Opp Drive End Bearing	Ball	Frame Material	Cast Iron
Shaft Type	T	Overall Length	16.80 in
Shaft Diameter	1.125 in	Shaft Extension	2.75 in
Assembly/Box Mounting	F1 ONLY		
Connection Drawing	00501019	Outline Drawing	16953460-184T

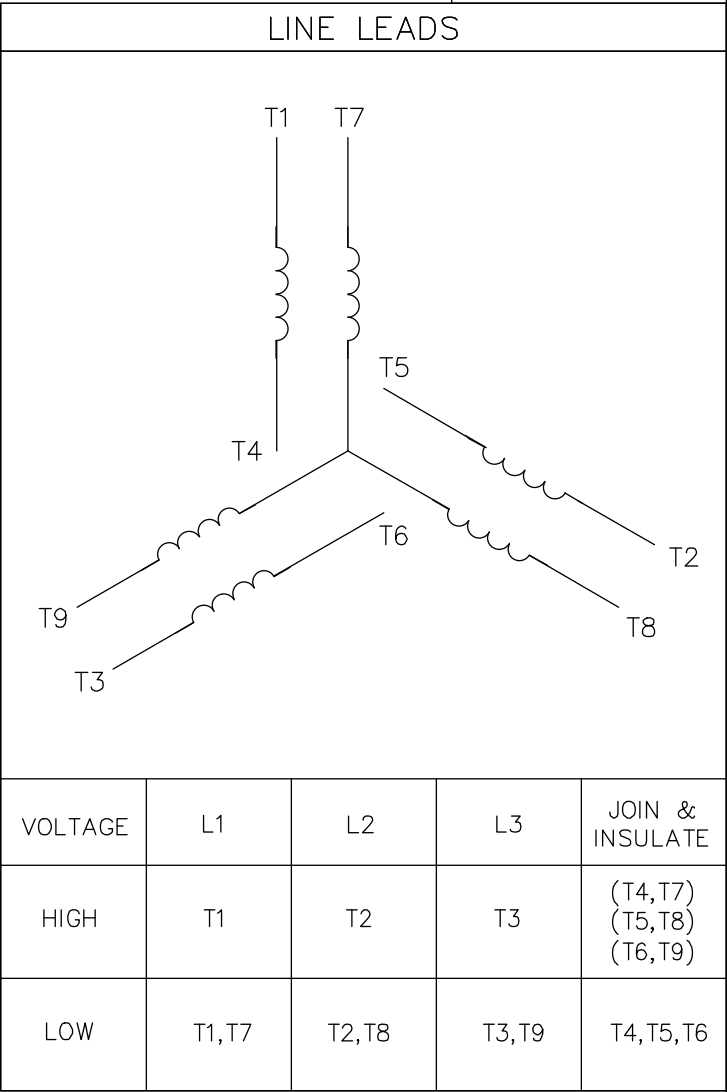
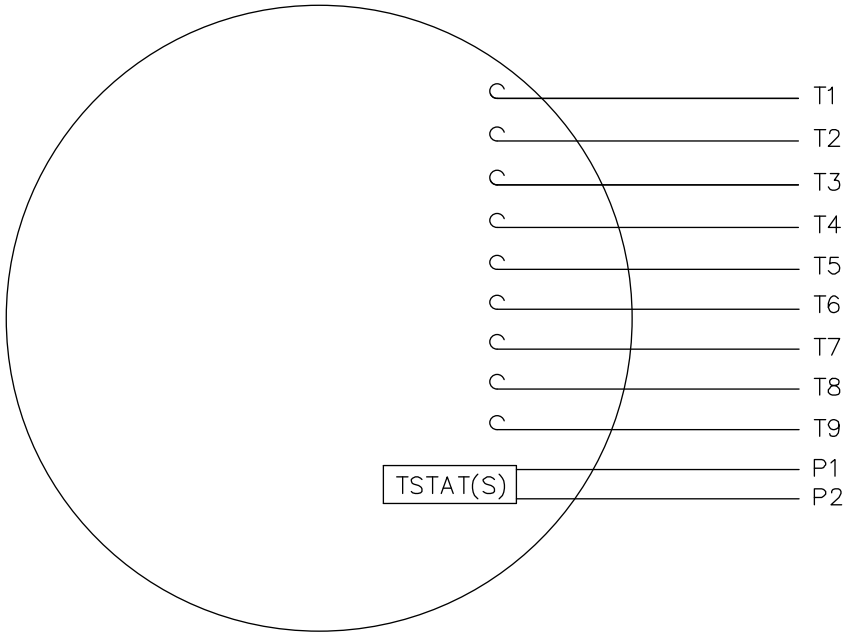


NOTE: 184T HAS 6 MTG. HOLES, USING BOTH 182T AND 184T "2F" LOCATIONS.

FRAME	"C"	"BV"
182T	16.14	5.38
184T	16.80	5.88

			TOLERANCES UNLESS SPECIFIED		LEESON	ELECTRIC MOTORS GEARMOTORS AND DRIVES	DRAWN J.J.K. 03/25/99	
			DEC.	INCHES			CHK	
			.X	$\pm .1$			APPD	P.G. 03/31/99
02	REDRAWN TO CURRENT CAD STANDARDS	CJK 11/14/01	.XX	$\pm .03$	TITLE	OUTLINE - 182T & 184T FRAME RIGID - TEFC NEW CON-BOX	SCALE	7-16
01	REDRAWN WITH CURRENT STANDARDS TO CAD	D.R.Z2/15/01	.XXX	$\pm .005$	MAT'L	CAST IRON	REF	169500
NO.	REVISION	BY & DATE	CHK	ANG	FINISH		FMF	
			RFP		CAD FILE	16953460	PREV	
THIS DRAWING IN DESIGN AND DETAIL IS OUR PROPERTY AND MUST NOT BE USED EXCEPT IN CONNECTION WITH OUR WORK ALL RIGHTS OF DESIGN AND INVENTION ARE RESERVED THIS IS AN ELECTRONICALLY GENERATED DOCUMENT - DO NOT SCALE THIS PRINT						DIST	DRAWING NO.	REV.
							B	169534-60
								02

VIEW FROM OUTSIDE OF MOTOR AT SWITCH END.



VOLTAGE	L1	L2	L3	JOIN & INSULATE
HIGH	T1	T2	T3	(T4,T7) (T5,T8) (T6,T9)
LOW	T1,T7	T2,T8	T3,T9	T4,T5,T6

TOLERANCES UNLESS OTHERWISE SPECIFIED	
DECIMALS	
.00	± .01
.000	± .005
.0000	± .0005
FRACTIONS	± 1/64
ANGLES	± 1/2°
INCH/MM	

LEESON ELECTRIC CORPORATION

DRAWN DBT 12/16/97	TITLE	EXTERNAL WIRING DIAGRAM 3 PHASE W/O PROTECTOR	
CH'K'D.	MAT'L.	DECAL - 004014 (TSTAT)- 080088	
APPR.			
SCALE 1=1			
REF.	FINISH	STOCK	SIZE
FMF			A
			DRAWING NO.
			005010-19

NO.	REVISION	BY	DATE

THIS DRAWING IN DESIGN AND DETAIL IS OUR PROPERTY
AND MUST NOT BE USED EXCEPT IN CONNECTION WITH OUR WORK
ALL RIGHTS OF DESIGN AND INVENTION ARE RESERVED



1051 CHEYENNE AVE.
GRAFTON, WI 53024
PH. 262-377-8810

CATALOG #: 171322.60

CONN. DIAGRAM: 00501019

OUTLINE: 16953460

MOUNTING: F1 ONLY

WINDING #: T08704011 1

TYPICAL MOTOR PERFORMANCE DATA

HP	kW	SYNC. RPM	F.L. RPM	FRAME	ENCLOSURE	KVA CODE	DESIGN
5&5	3.70&3.70	1800	1760&1445	184T	TEFC	J	B

PH	Hz	VOLTS	AMPS	START TYPE	DUTY	INSL	S.F.	AMB°C
3	60/50	208-230/460&190/380	13.8-12.8/6.4&15.4/7.7	LINE OR INVERTER	CONTINUOUS	F5	1.15/1.15	40

FULL LOAD EFF:	89.5&86.5	3/4 LOAD EFF:	89.5	1/2 LOAD EFF:	89.5	GTD. EFF	ELEC. TYPE
FULL LOAD PF:	81.1&84.5	3/4 LOAD PF:	74.9	1/2 LOAD PF:	64	87.5	SQ CAGE INV RATED

F.L. TORQUE	LOCKED ROTOR AMPS	L.R. TORQUE	B.D. TORQUE	F.L. RISE°C
14.9 LB-FT	98 / 49	33.8 LB-FT 227 %	50.2 LB-FT 337 %	40

SOUND PRESSURE @ 3 FT.	SOUND POWER	ROTOR WK^2	MAX. WK^2	SAFE STALL TIME	STARTS / HOUR	APPROX. MOTOR WGT
61 dBA	71 dBA	- LB-FT^2	- LB-FT^2	- SEC.	-	120 LBS.

***** SUPPLEMENTAL INFORMATION *****

DE BRACKET TYPE	ODE BRACKET TYPE	MOUNT TYPE	ORIENTATION	SEVERE DUTY	HAZARDOUS LOCATION	DRIP COVER	SCREENS	PAINT
STANDARD	STANDARD	RIGID	HORIZONTAL	FALSE	NONE	FALSE	NONE	BLUE (ENAMEL)

BEARINGS		GREASE	SHAFT TYPE	SPECIAL DE	SPECIAL ODE	SHAFT MATERIAL	FRAME MATERIAL
DE	ODE						
BALL	BALL	POLYREX EM	T	NONE	NONE	1045 HOT ROLLED (C-204)	CAST IRON
6206	6205						

THERMO-PROTECTORS				THERMISTORS	CONTROL	SPACE HEATERS
THERMOSTATS	PROTECTORS	WDG RTDs	BRG RTDs			
TSTATS (N/C)	NOT	NONE	NONE	NONE	FALSE	NONE VOLTS

*

N

O

T

E

S

INVERTER TORQUE: CONSTANT 10:1

INV. HP SPEED RANGE: NONE

ENCODER: NONE

NONE NONE

NONE NONE PPR

BRAKE: NONE NONE

NONE P/N NONE

NONE NONE

NONE FT-LB NONE V NONE Hz

Data Sheet

Date: 1/17/2018

171322.60



Data @ 460 V

Motor Load Data

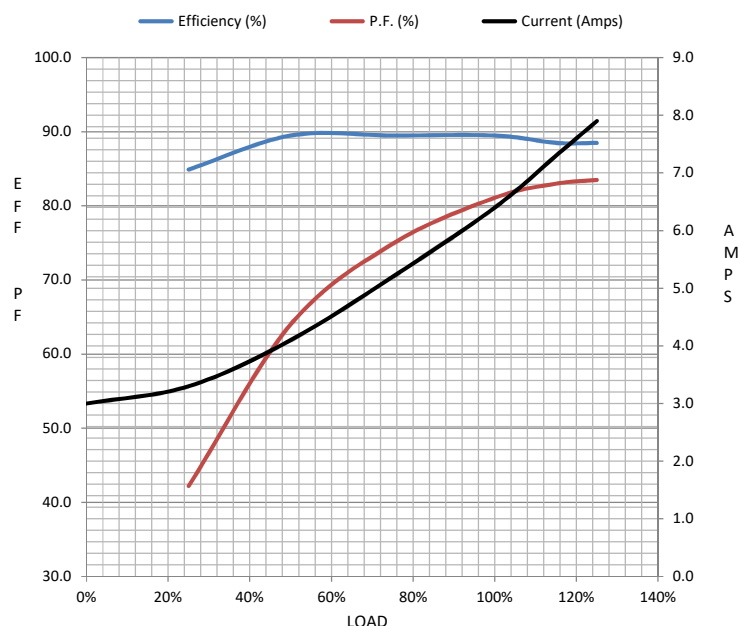
Load	0%	25%	50%	75%	100%	115%	125%	LR	
Current (Amps)	3.0	3.3	4.1	5.2	6.4	7.3	7.9	49.0	
Torque (ft-lb)	0.00	3.7	7.4	11.1	14.9	17.3	18.8	33.8	
RPM	1800	1790	1780	1770	1760	1750	1745	0	
Efficiency (%)		84.9	89.5	89.5	89.5	88.5	88.5		
P.F. (%)	6.6	42.2	64.0	74.9	81.1	83.0	83.5	0.0	

Motor Speed Data

	LR	Pull-Up	BD	Rated	Idle
Speed (RPM)	0	800	1535	1760	1800
Current (Amps)	49.0	46.5	30.0	6.4	3.0
Torque (ft-lb)	33.8	28.7	50.2	14.9	0.00

Information Block

HP	5.0			
Sync. RPM	1800			
Frame	112			
Enclosure	TEFC			
Construction	TFC			
Voltage	208-230/460#190/380	V		
Frequency	60	Hz		
Design	B			
LR Code letter	J			
Service Factor	1.15			
Temp Rise @ FL	40	° C		
Duty	CONT			
Ambient	40	° C		
Elevation	1,000	feet		
Rotor/Shaft wk²	0.00	Lb-Ft²		
Ref Wdg	T08704011 NONE			
Sound Pressure @ 1M	61	dBA		
VFD Rating	CONSTANT 10:1			
Outline Dwg	16953460			
Conn. Diag	00501019			
Additional Specifications:				
0				
0				
EQUIV CKT (OHMS / PHASE)				
R1	R2	X1	X2	Xm
0.0000	0.0000	0.0000	0.0000	0.0000



Speed - Torque Curve

