

PRODUCT INFORMATION PACKET



Model No: 171320.00

Catalog No: 171320.00

General Purpose Motor, 3 & 2 HP, 3 Ph, 60 & 50 Hz, 208-230/460 & 190/380 V, 1800 & 1500 RPM,
182T Frame, TEFC



Regal and Leeson are trademarks of Regal Rexnord Corporation or one of its affiliated companies.

©2023 Regal Rexnord Corporation, All Rights Reserved. MC017097E



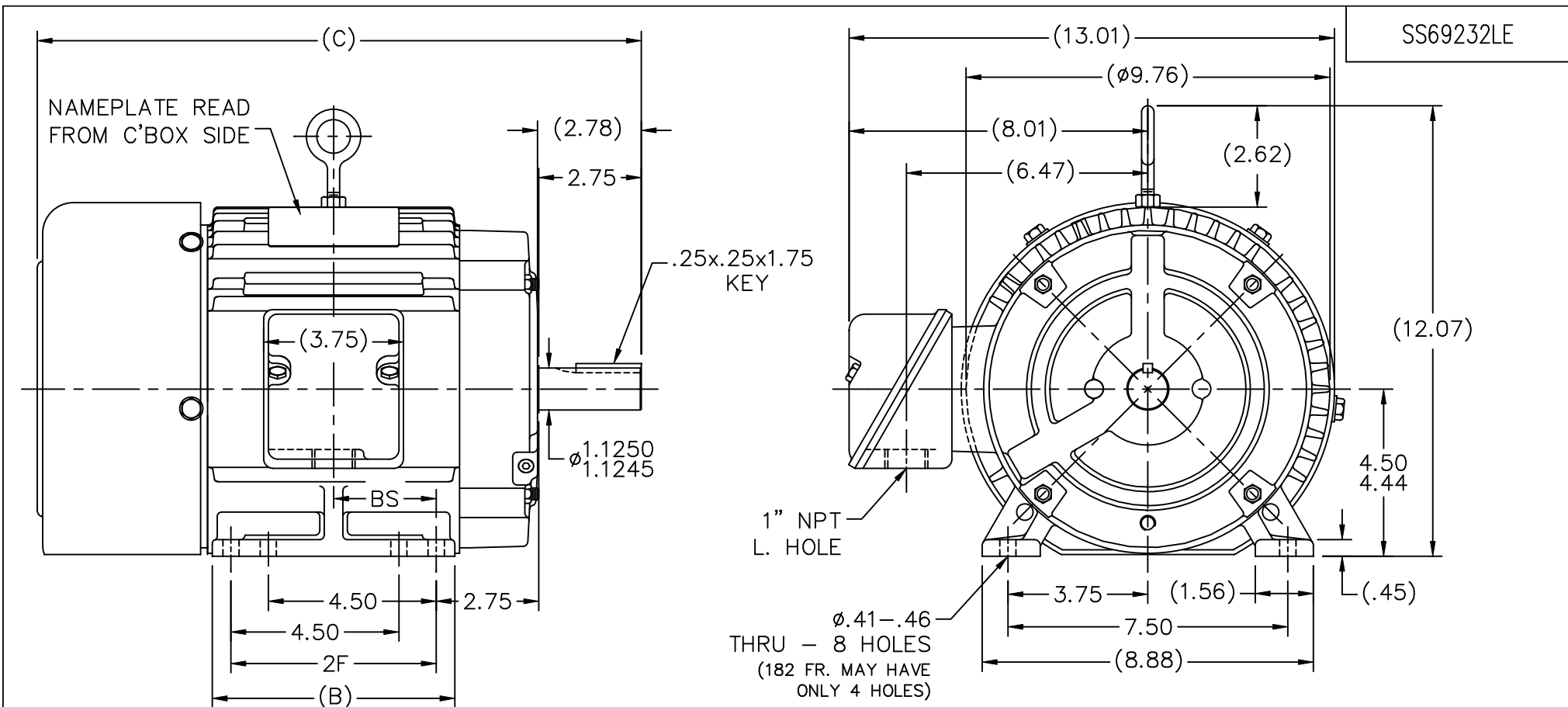


Nameplate Specifications

Phase	3	Output HP	3 & 2 Hp
Output KW	2.2 & 1.5 kW	Voltage	208-230/460 & 190/380 V
Speed	1760 & 1470 rpm	Service Factor	1.15 & 1.15
Frame	182T	Enclosure	Totally Enclosed Fan Cooled
Thermal Protection	Thermostat	Efficiency	89.5 & 88.5 %
Ambient Temperature	40 °C	Frequency	60 & 50 Hz
Current	8.4-8/4 & 6.8/3.4 A	Power Factor	80
Duty	Continuous	Insulation Class	F
Design Code	B	KVA Code	K
Drive End Bearing Size	206	Opp Drive End Bearing Size	205
UL	Recognized	CSA	Y
CE	Y	IP Code	43
Number of Speeds	1		

Technical Specifications

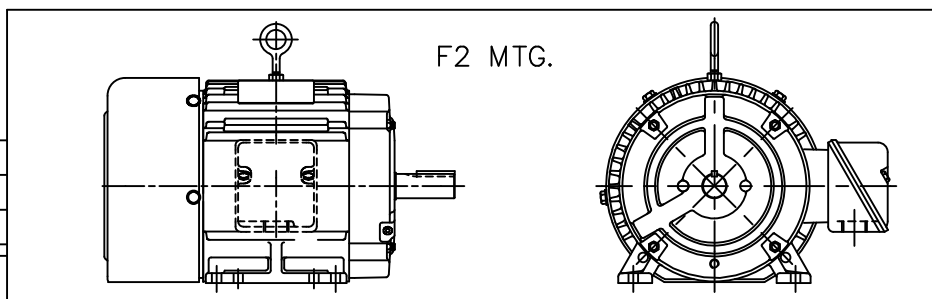
Electrical Type	Squirrel Cage Induction Run	Starting Method	Across The Line
Poles	4	Rotation	Reversible
Resistance Main	3.76 Ohms	Mounting	Rigid Base
Motor Orientation	Horizontal	Drive End Bearing	Ball
Opp Drive End Bearing	Ball	Frame Material	Cast Iron
Shaft Type	T	Overall Length	15.19 in
Shaft Diameter	1.125 in	Shaft Extension	2.75 in
Assembly/Box Mounting	F1/F2 CAPABLE		
Outline Drawing	A-SS69232LE-575	Connection Drawing	A-EE7308T-LE




NOTES:

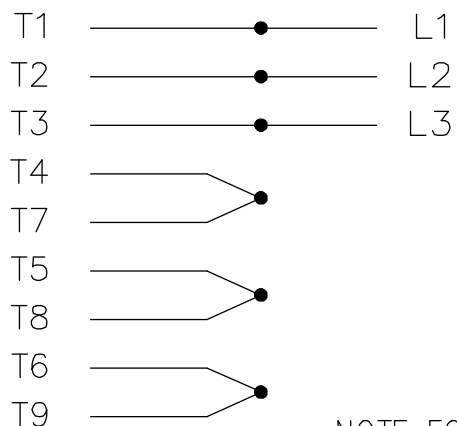
1. C'BOX CAN BE ROTATED IN 90 ° STEPS.
2. C'BOX CAN BE MOUNTED ON OPPOSITE SIDE BY REMOVING BRACKETS & TURNING FRAME 180°

575	182T	15.19	5.50	4.50	2.25
675	184T	16.19	6.50	5.50	2.75
800	184T	17.44	7.75	5.50	3.38
DASH	FRAME	C	B	2F	BS



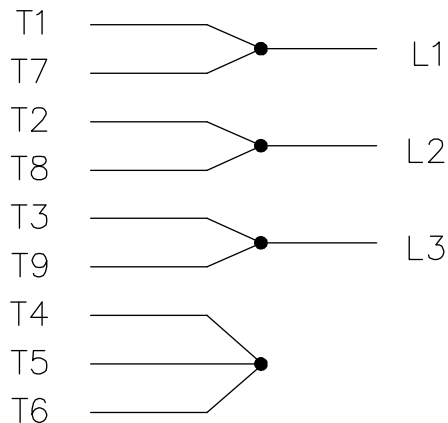
				TOLERANCES UNLESS SPECIFIED		 ELECTRIC MOTORS GEARMOTORS AND DRIVES	DRAWN TJB 02-15-2002				
				DEC.	INCHES		CHK DRS 02-15-2002				
				.X	±.1		APPD GK 02-15-2002				
				.XX	±.03		SCALE 1=4				
				.XXX	±.005		REF				
				.XXXX	±.0005	MAT'L.	FMF				
NO.	REVISION	BY & DATE	CHK	ANG	±7°30"	FINISH	PREV				
THIS DRAWING IN DESIGN AND DETAIL IS OUR PROPERTY AND MUST NOT BE USED EXCEPT IN CONNECTION WITH OUR WORK ALL RIGHTS OF DESIGN AND INVENTION ARE RESERVED THIS IS AN ELECTRONICALLY GENERATED DOCUMENT – DO NOT SCALE THIS PRINT			RFP		CAD FILE SS69232LE		SIZE	DRAWING NO.	PAGE	OF	REV.
			DIST				A	SS69232LE			

HIGH VOLTAGE



NOTE FOR FACTORY USE ONLY:
TO SURGE TEST FOR COMMON CONNECT:
HIGH VOLT: CONNECT P1 TO T1
THEN P2 TO L1
LOW VOLT: CONNECT P1 TO T1 & T7,
THEN P2 TO L1

LOW VOLTAGE

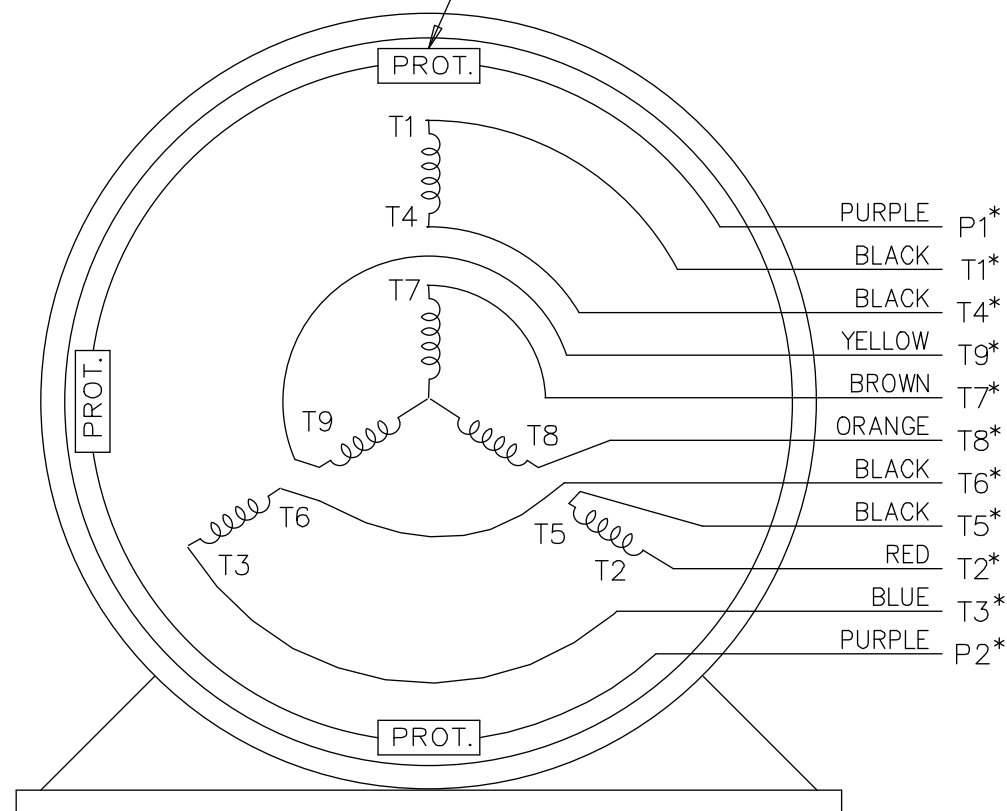


* USE LEADS AS PER PLANT STANDARD IRRWSPECTIVE OF THEIR COLOUR.


THREE PHASE DUAL VOLTAGE MOTOR

EE7308T-LE

THREMO-PROTECTORS
CONNECTED IN SERIES.



VIEW OF TERMINAL END

			TOLERANCES UNLESS SPECIFIED			 ELECTRIC MOTORS GEARMOTORS AND DRIVES	DRAWN TJB 05-07-2002		
05	ADDED * NOTE PER ECN # 26921	UD 01-30-2013	JD	DEC.	INCHES		CHK	ML	05-08-2002
04	ADDED COLORS TO "T & P" LEADS CN 40494	MSG 08-08-2006	ML	.X	±.1	TITLE CONNECTION DIAGRAM 3 PHASE - DUAL VOLTAGE MOTOR	APPD	TB	05-08-2002
03	RE-ISSUE	NJS 04-21-2004	JET	.XX	±.02		SCALE	1=1	
02	REDRAWN	TAT 04-20-2004	ML	.XXX	±.005		REF		
01	NEW DRAWING CN 34708	TJB 05-08-2002	ML	.XXXX	±.0005		FMF		
NO.	REVISION	BY & DATE	CHK	ANG	±7'30"	FINISH	PREV		
THIS DRAWING IN DESIGN AND DETAIL IS OUR PROPERTY AND MUST NOT BE USED EXCEPT IN CONNECTION WITH OUR WORK ALL RIGHTS OF DESIGN AND INVENTION ARE RESERVED THIS IS AN ELECTRONICALLY GENERATED DOCUMENT - DO NOT SCALE THIS PRINT			RFP			CAD FILE EE7308T_LE	SIZE A	DRAWING NO. EE7308T-LE	PAGE OF 05
			DIST LB-WP-LE						