

PRODUCT INFORMATION PACKET



Model No: 171316.60

Catalog No: 171316.60

WATTSaver® General Purpose Motor, 200 & 150 HP, 3 Ph, 60 & 50 Hz, 460 & 380 V, 1200 & 1000 RPM,
447/449T Frame, TEFC



Regal and Leeson are trademarks of Regal Rexnord Corporation or one of its affiliated companies.

©2023 Regal Rexnord Corporation, All Rights Reserved. MC017097E





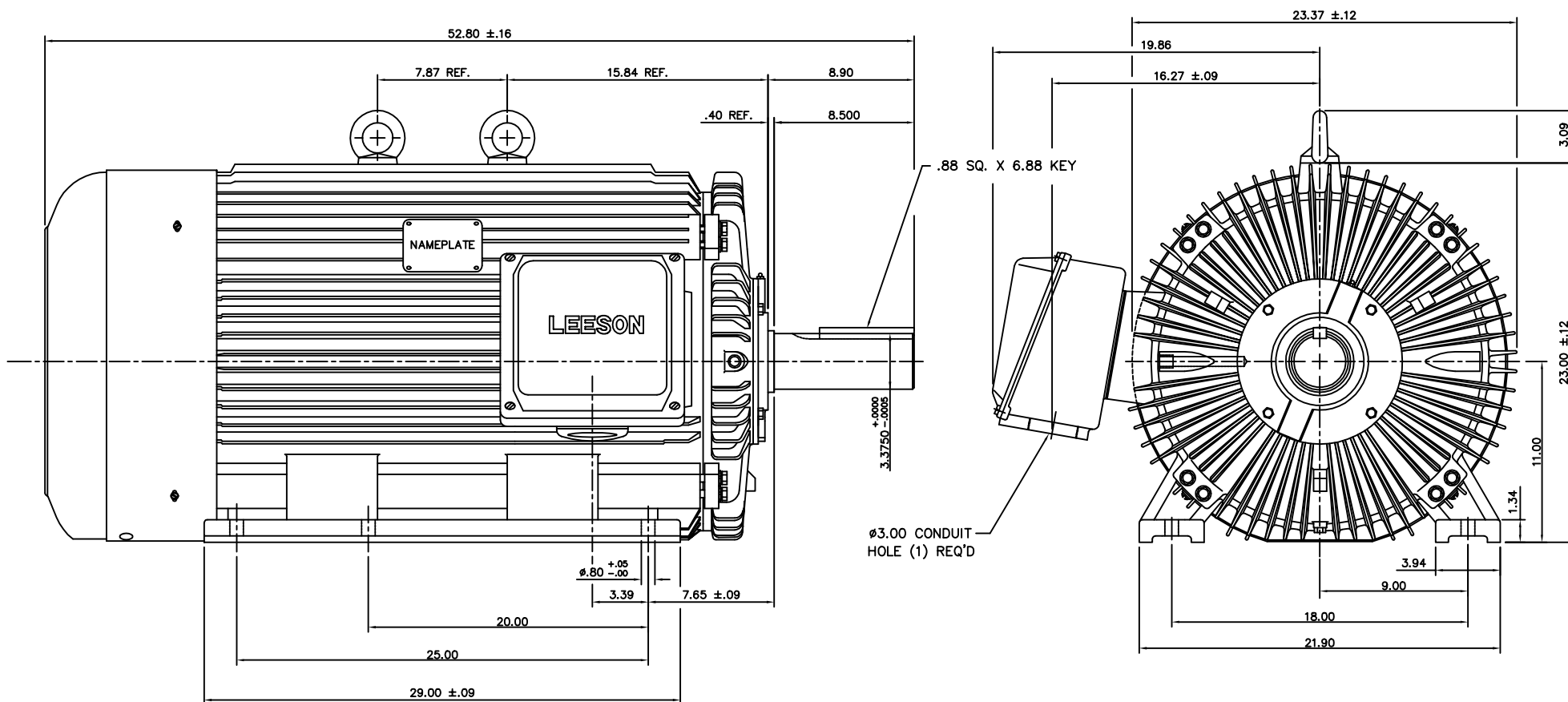
Nameplate Specifications

Phase	3	Output HP	200 & 150 Hp
Output KW	149.0 & 112.0 kW	Voltage	460 & 380 V
Speed	1193 & 995 rpm	Service Factor	1.15 & 1.15
Frame	447/449T	Enclosure	Totally Enclosed Fan Cooled
Thermal Protection	No Protection	Efficiency	96.2 & 96.2 %
Ambient Temperature	40 °C	Frequency	60 & 50 Hz
Current	241 & 220 A	Power Factor	80.5
Duty	Continuous	Insulation Class	F
Design Code	B	KVA Code	G
Drive End Bearing Size	6319	Opp Drive End Bearing Size	6317
UL	Recognized	CSA	Y
CE	Y	IP Code	43
Number of Speeds	1		

Technical Specifications

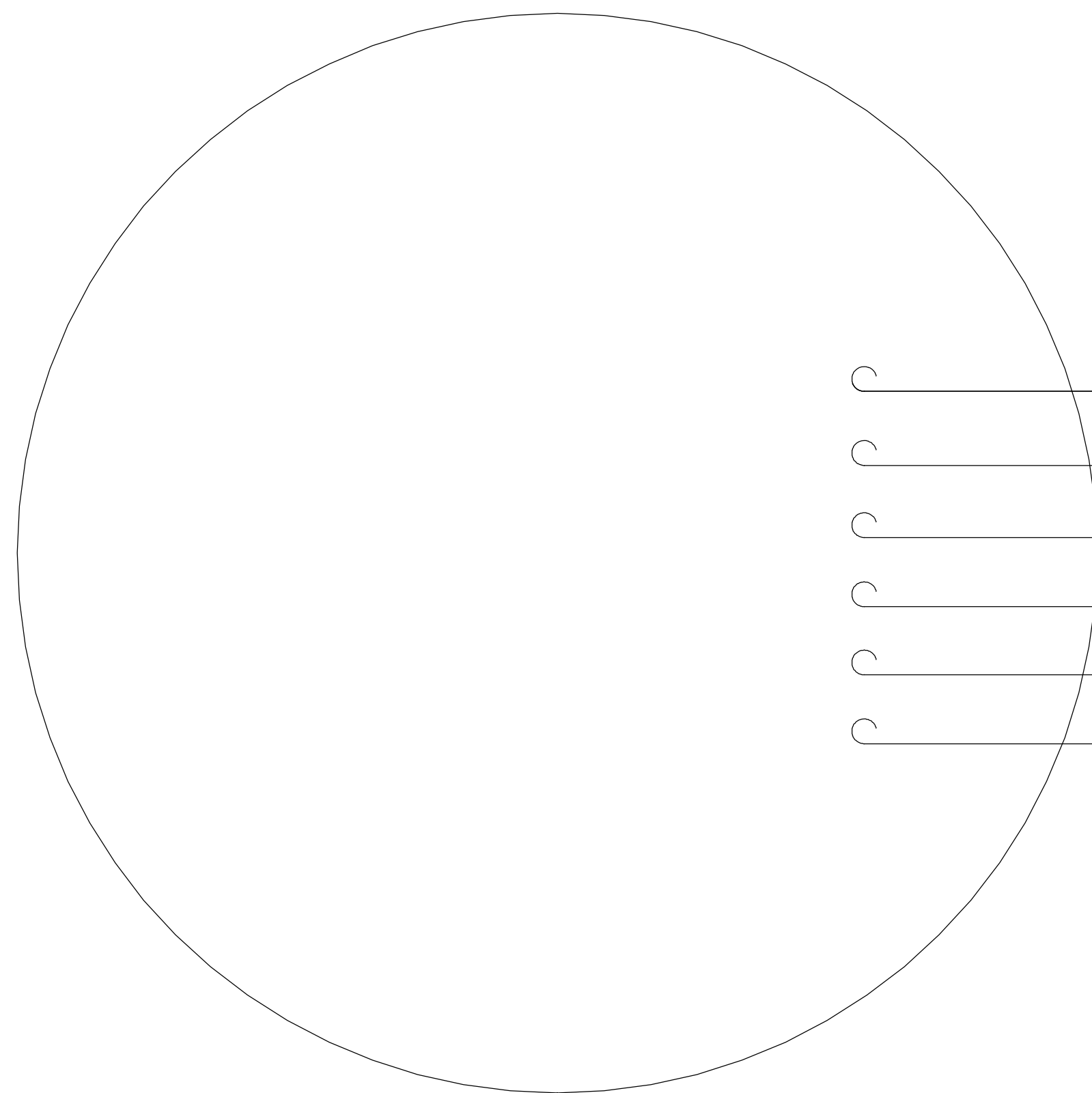
Electrical Type	Squirrel Cage Inverter Rated	Starting Method	Wye Start Delta Run Or Inverter
Poles	6	Rotation	Reversible
Resistance Main	.014 Ohms	Mounting	Rigid Base
Motor Orientation	Horizontal	Drive End Bearing	Ball
Opp Drive End Bearing	Ball	Frame Material	Cast Iron
Shaft Type	T	Overall Length	52.80 in
Shaft Diameter	3.375 in	Shaft Extension	8.5 in
Assembly/Box Mounting	F1/F2 CAPABLE	Inverter Load	CONSTANT 10:1
Outline Drawing	16958360	Connection Drawing	00519001

169583-60

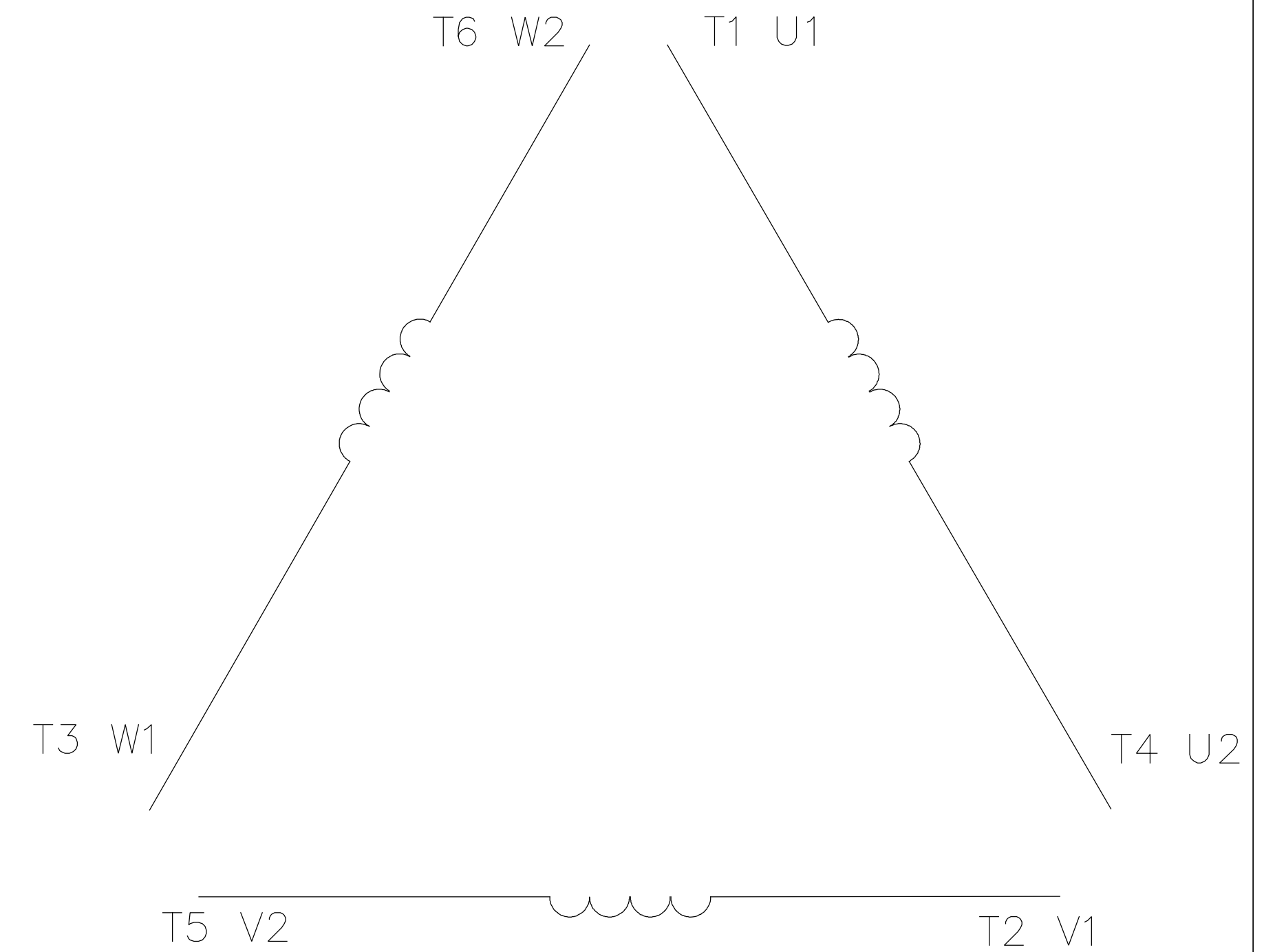


					TOLERANCES UNLESS OTHERWISE SPECIFIED		LEESON ELECTRIC CORPORATION				
					DECIMALS						
					.00	± .03	DRAWN	LEM 10/04/99	TITLE OUTLINE - 449T FRAME TEFC - RIGID MOUNT MEETS NEC/UL REQ. CON-BOX VOL. = 9750		
					.000	± .005	CHK'D.	ADS 11/08/99			
01	REDRAWN TO CURRENT CAD STANDARDS	CJK	09/17/01		.0000	± .0005	APPR.	ADS 11/08/99	MAT'L.		
NO.	REVISION	BY	DATE		FRACTIONS	± 1/64	SCALE	1=6	CAST IRON		
THIS DRAWING IN DESIGN AND DETAIL IS OUR PROPERTY AND MUST NOT BE USED EXCEPT IN CONNECTION WITH OUR WORK ALL RIGHTS OF DESIGN AND INVENTION ARE RESERVED					ANGLES	± 1/2"	REF.	FINISH	SIZE	DRAWING NO.	
					INCH/MM		FMF	B	169583-60		

005190-01



A diagram of a multi-ported device. On the left, there is a vertical curved line representing the device boundary. Six horizontal lines extend from this boundary to the right, each representing a port. Each port is labeled with a 'C' on the left, a 'T' followed by a number (T1 through T6) in the middle, and a 'U' followed by a number (U1 through U6) on the right. The ports are arranged vertically from top to bottom: C T1 U1, C T2 V1, C T3 W1, C T4 U2, C T5 V2, and C T6 W2.



	L1	L2	L3	JOIN
START (WYE)	T1 U1	T2 V1	T3 U2	(T4,T5,T6) (U2,V2,W2)
RUN (DELTA)	(T1,T6) (U1,W2)	(T2,T4) (V1,U2)	(T3,T5) (W1,V2)	

				TOLERANCES UNLESS OTHERWISE SPECIFIED		LEESON ELECTRIC CORPORATION			
04	ADDED MAT'L (CWLE) PER ECO-0168542	DS	6/10/2019	DECIMALS					
03	ADDED IEC DESIGNATIONS	MOL	4/27/2012	.00	± .01	DRAWN PG 05/07/82	EXT. WIRING DIAGRAM STAR START – DELTA RUN		
02	REMOVED OBSOLETE STATUS	KJH	6/28/99	.000	± .005	CH'K'D. TEM			
01	REDRAWN ON CAD	DBT	05/30/97	.0000	± .0005	APPR. 05/07/82	MAT'L. Y-CONNECTED START (CWLE) DELTA CONNECTED RUN – SINGLE VOLTAGE		
NO.	REVISION	BY	DATE	FRACTIONS	± 1/64	SCALE 1=1			
THIS DRAWING IN DESIGN AND DETAIL IS OUR PROPERTY AND MUST NOT BE USED EXCEPT IN CONNECTION WITH OUR WORK ALL RIGHTS OF DESIGN AND INVENTION ARE RESERVED				ANGLES	± 1/2°	REF. T2E	FINISH	SIZE	DRAWING NO.
				INCH/MM		FMF ELECTRO POWER		A	005190-01



P.O. BOX 8003
WAUSAU, WI 54401-8003
PH. 715-675-3311

DATA VOLTS: 460

CERTIFICATION DATA SHEET

CONN. DIAGRAM: 00519001
OUTLINE: 16958360
WINDING: T22806011

CAT #: 171316.60

NONE 1

TYPICAL MOTOR PERFORMANCE DATA

HP	KW	SYNC RPM	FL RPM	FRAME	ENCLOSURE	TYPE	KVA CODE	DESIGN
200	149	1200	1193	447/449T	TEFC	TFC	G	B

PH	HZ	VOLTS	AMPS	START TYPE	DUTY	INSL	S.F.	AMB	ELEV.
3	60/50	460#380	241&220	Y START D RUN OR INV	CONT	F	1.15	40	3300

F.L. EFF	96.2	3/4 LD EFF	96.2	1/2 LD EFF	95.4	GTD EFF	95.4	ELECT. TYPE	SQ CAGE INV RATED
F.L. PF	80.5	3/4 LD PF	77.0	1/2 LD PF	68.5				

F.L. TORQUE	LR AMPS @ 460 V	L.R. TORQUE	B.D. TORQUE	F.L. RISE (°C)
880 LB-FT	1,450	1,225 LB-FT 139%	2,100 LB-FT 239%	65

PRESSURE @ 3	POWER	ROTOR WK²	MAX. LOAD WK²	SAFE STALL TIME	STARTS/HOUR	MOTOR WGT
63 dBA	72 dBA	0.00 LB-FT²	0 LB-FT²	20 SEC.	2	2647 LB.

*** SUPPLEMENTAL INFORMATION ***

DE BRACKET TYPE	ODE BRACKET TYPE	MOUNT TYPE	MOTOR ORIENTATION	SEVERE DUTY	HAZARDOUS LOCATION	DRIP COVER	SCREENS	PAINT
STANDARD	STANDARD	RIGID	HORIZONTAL	NO	NONE	NO	NONE	IN - LEESON WATTS

BEARINGS		GREASE	SHAFT TYPE	SPECIAL DE	SPECIAL ODE	SHAFT MATERIAL	FRAME MATERIAL
DE	ODE	POLYREX EM	T	NONE	NONE	AISI 1045 (C-240)	CAST IRON
BALL	BALL						
6319	6317						

THERMOSTATS	PROTECTORS	WDG RTD's	BRG RTD's	THERMISTORS	CONTROL	SPACE HEATERS
NONE	NOT	NONE	NONE	NONE	FALSE	NA

R1 (ohms/ph)	R2 (ohms/ph)	X1 (ohms/ph)	X2 (ohms/ph)	Xm (ohms/ph)	VIBRATION (in/sec)	FLOAT
0	0	0	0	0	0.150	ODE

* N O T E S *			INVERTER TORQUE: CONSTANT 10:1 INV. HP SPEED RANGE: NONE
			ENCODER: NONE NONE NONE
			NONE PPR
DATE: 1/17/2018			BRAKE: NONE NONE NONE
			FT-LB: NA VOLTAGE: NONE UL: V-INS, CONST UL REC
			HZ:

Data Sheet

Date: 1/17/2018

171316.60



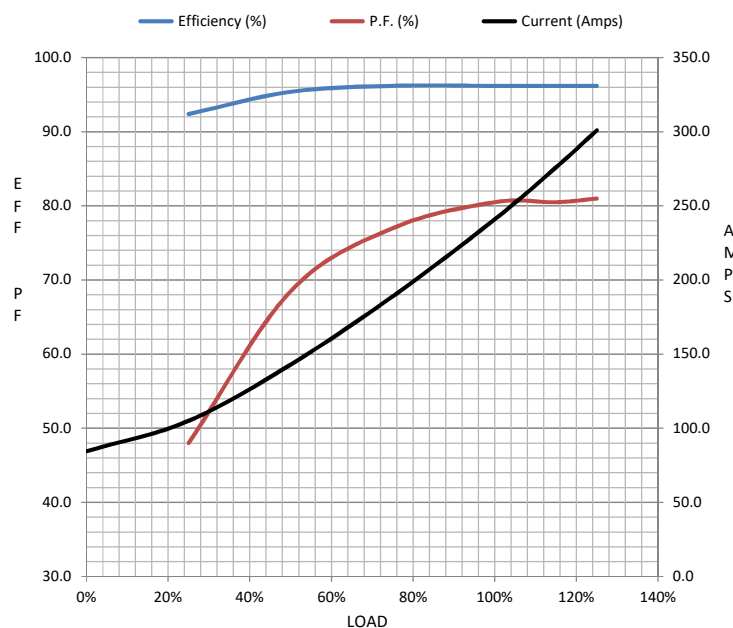
Data @ 460 V

Motor Load Data

Load	0%	25%	50%	75%	100%	115%	125%	LR	
Current (Amps)	84.5	105	143	189	241	276	301	1,450	
Torque (ft-lb)	0.00	219	439	659	880	1,013	1,102	1,225	
RPM	1200	1198	1197	1196	1193	1,192	1191	0	
Efficiency (%)		92.4	95.4	96.2	96.2	96.2	96.2		
P.F. (%)	4.0	48.0	68.5	77.0	80.5	80.5	81.0	24.0	

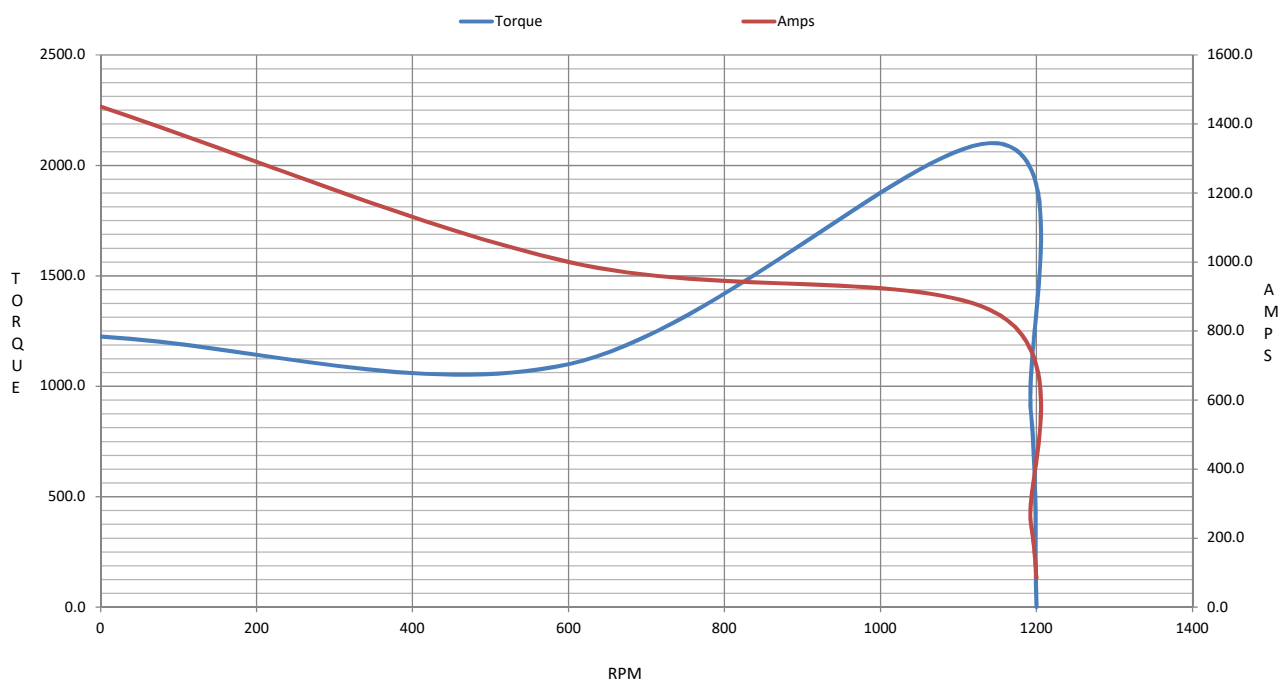
Motor Speed Data

	LR	Pull-Up	BD	Rated	Idle	Information Block			
Speed (RPM)	0	600	1150	1193	1200	HP	200.0		
Current (Amps)	1,450	1,000	850	241	84.5	Sync. RPM	1200		
Torque (ft-lb)	1,225	1,100	2,100	880	0.00	Frame	449		



Frame	449			
Enclosure	TEFC			
Construction	TFC			
Voltage	460#380	V		
Frequency	60	Hz		
Design	B			
LR Code letter	G			
Service Factor	1.15			
Temp Rise @ FL	65	° C		
Duty	CONT			
Ambient	40	° C		
Elevation	1,000	feet		
Rotor/Shaft wk²	0.00	Lb-Ft²		
Ref Wdg	T22806011 NONE			
Sound Pressure @ 1M	63	dBA		
VFD Rating	CONSTANT 10:1			
Outline Dwg	16958360			
Conn. Diag	00519001			
Additional Specifications:				
0				
0				
EQUIV CKT (OHMS / PHASE)				
R1	R2	X1	X2	Xm
0.0000	0.0000	0.0000	0.0000	0.0000

Speed - Torque Curve



EC Declaration of Conformity

The undersigned representing
the manufacturer:

Regal Beloit America
100 East Randolph St.
Wausau, WI 54401

and the authorized representative
established within the Community:

Marathon Electric UK
6F Thistleton Road Ind. Estate
Market Overton
Oakham, Rutland LE15 7PP UK

are committed to providing customers with products that comply with applicable regulations and international protocols to which they are subject, including the requirements of the European Parliament Directive on the Harmonization of the laws relating to electrical equipment designed for use within certain voltage limits (2014/35/EU).

Regal Beloit America declares that the following product(s), to which this declaration relates, are in conformity with the relevant sections of the EC standards listed below.

This statement supersedes any statements previously issued pertaining to the product(s) listed below and is subject to change without notice.

Model No : 171316.60

(Model No. may contain prefix and/or suffix characters)

Catalog No : 171316.60

Rework No : N/A

Directives :

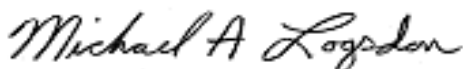
Low Voltage Directive 2014/35/EU

Harmonized Standards Used :

EN 60034-1: 2010 (IEC 60034-1: 2010)

EN 60034-5: 2001/A1:2007 (IEC 60034-5: 2000/A1:2006)

Authorized Representative:



Michael A. Logsdon
Vice President, Technology

Authorized Representative in the Community:



Julian Clark
Marketing Engineer

Created on 09/02/2022

CE 22