

PRODUCT INFORMATION PACKET



Model No: 170251.00

Catalog No: 170251.00

****OBSOLETE, REPLACED BY 405TTFC6080** 75 HP 1200 575 TEFC 405T PREM EFF
General Purpose Motors**



Regal and Leeson are trademarks of Regal Rexnord Corporation or one of its affiliated companies.
©2021 Regal Rexnord Corporation, All Rights Reserved. MC017097E



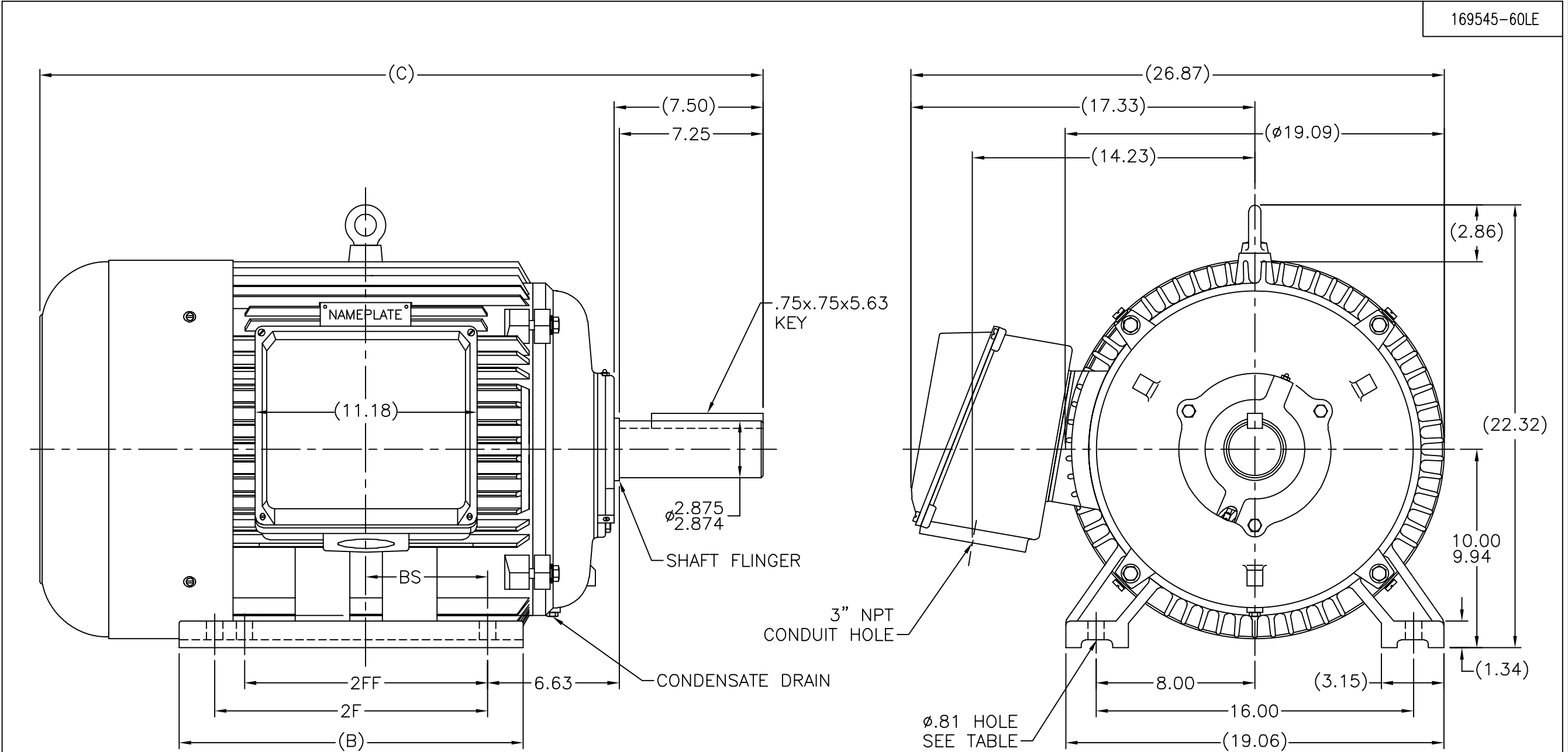



Nameplate Specifications

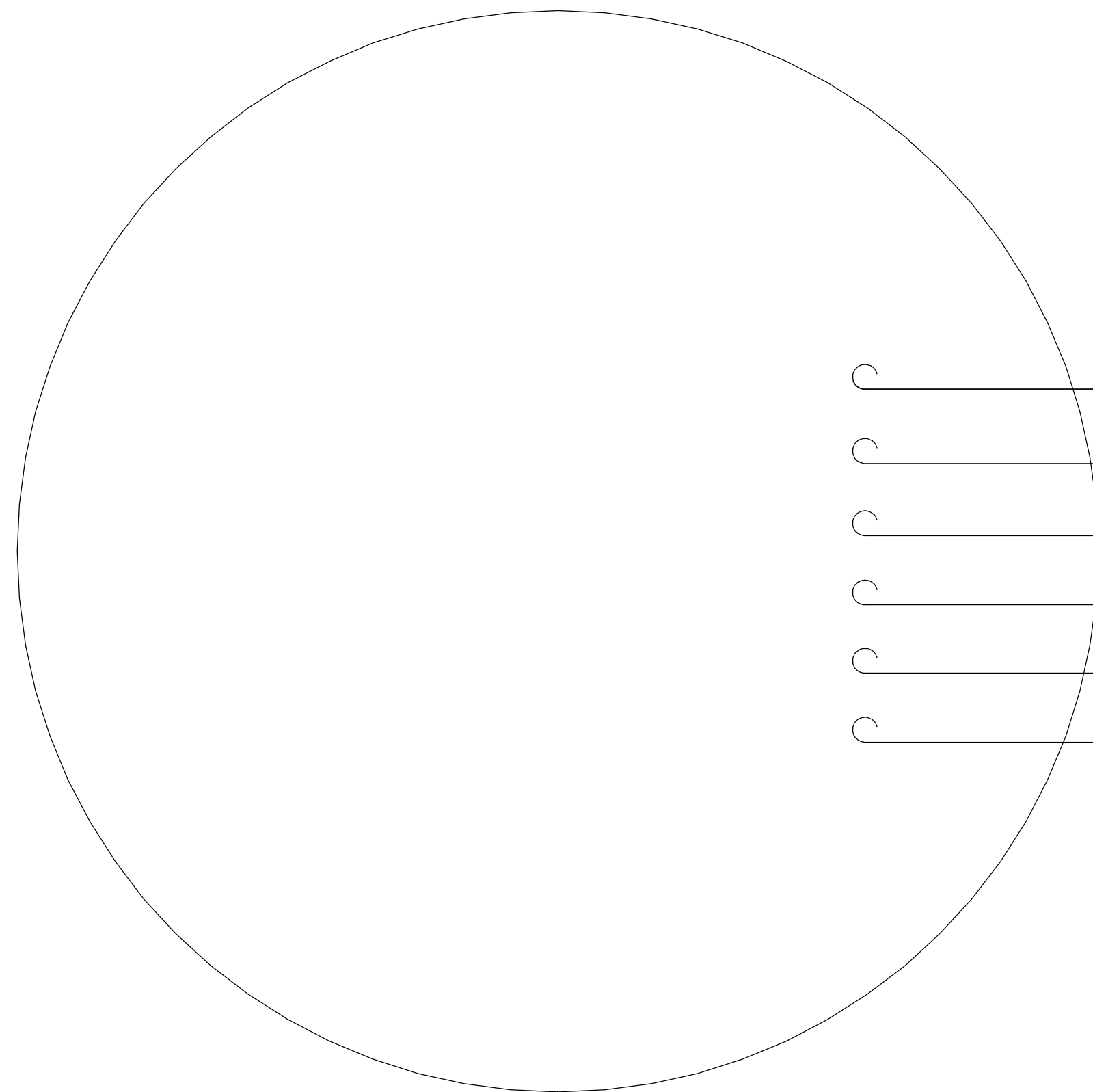
Output HP	75 Hp	Output KW	56.0 kW
Frequency	60 Hz	Voltage	575 V
Current	70.5 A	Speed	1190 rpm
Service Factor	1.15	Phase	3
Efficiency	95 %	Power Factor	84
Duty	Continuous	Insulation Class	F
Design Code	B	KVA Code	G
Frame	405T	Enclosure	Totally Enclosed Fan Cooled
Thermal Protection	No	Ambient Temperature	40 °C
Drive End Bearing Size	6316	Opp Drive End Bearing Size	6314
UL	Recognized	CSA	Y
CE	Y	IP Code	43
Number of Speeds	1		

Technical Specifications

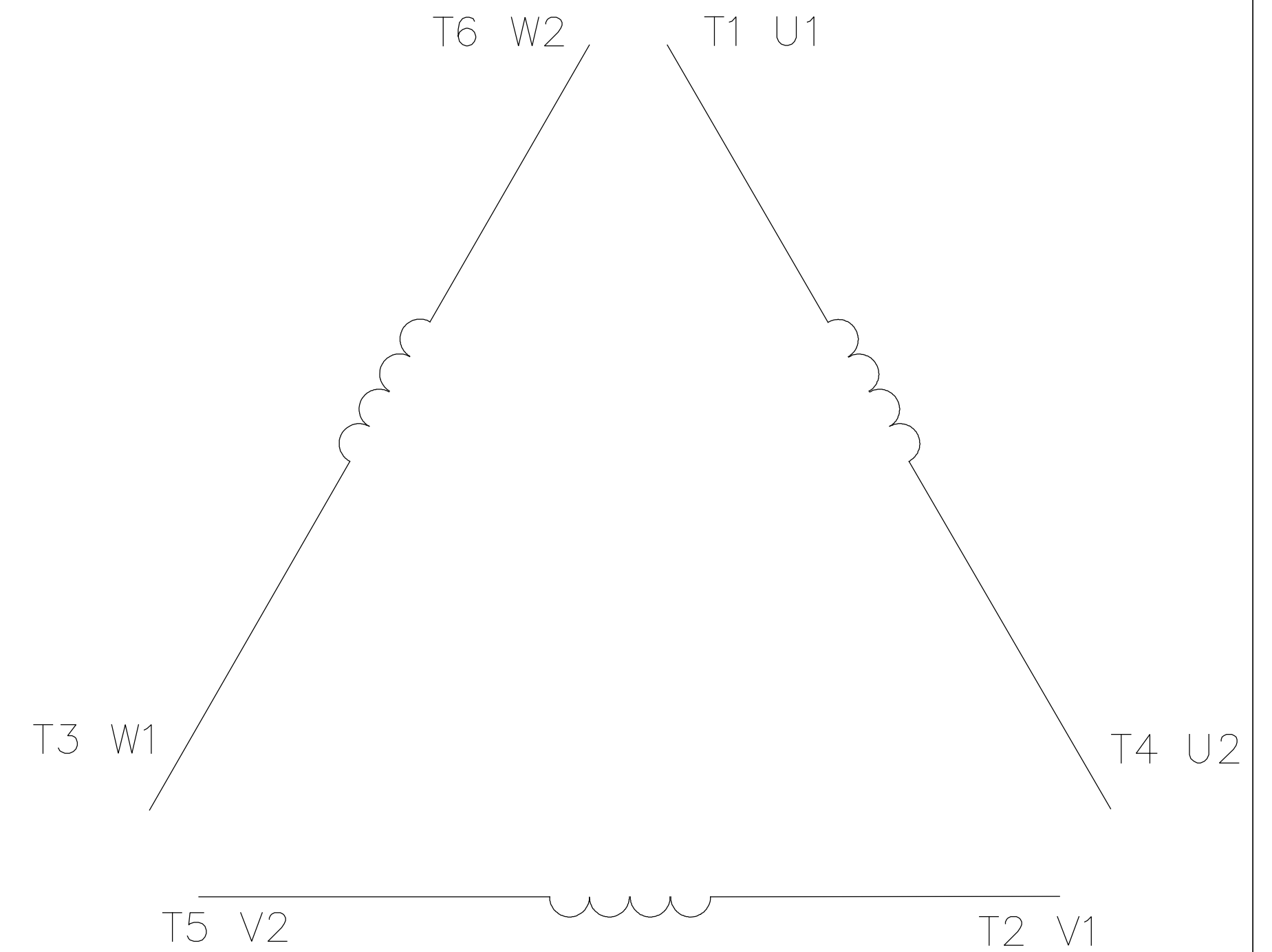
Electrical Type	Squirrel Cage Induction Run	Starting Method	Wye Start Delta Run
Poles	6	Rotation	Reversible
Resistance Main	.0696 Ohms	Mounting	Rigid Base
Motor Orientation	Horizontal	Drive End Bearing	Ball
Opp Drive End Bearing	Ball	Frame Material	Cast Iron
Shaft Type	T	Overall Length	37.91 in
Shaft Diameter	2.875 in	Shaft Extension	7.25 in
Assembly/Box Mounting	F1/F2 CAPABLE		
Connection Drawing	005190.01	Outline Drawing	16954560le



											TOLERANCES UNLESS SPECIFIED		<div> REGAL - BELOIT CORPORATION</div>		DRAWN CTO 08/21/2002																																																																						
											DEC.	INCHES			CHK ML 08/29/2002																																																																						
											.X	±.1			APPD SB 08/30/2002																																																																						
								3	REVISED BS DIM. UPDATED TITLE BLOCK ECO--0048910						RFH 04/07/2014	EH	.XX	±.03	TITLE OUTLINE -- RIGID		SCALE N/A																																																																
								2	CORRECTED FOOT MOUNTING HOLES DISCRIPTION				MOL 10/21/2011		.XXX	±.005	400T RF. -- TEFC		REF																																																																		
1681	404T	36.42	15.83	12.25	—	5.39	4	1	NEW DRAWING				CTO 06/30/2002	SB	.XXXX	±.0005	MAT'L.		FMF																																																																		
1831	405T	37.91	17.32	13.75	12.25	6.90	6	NO.	REVISION				BY & DATE		CHK	ANG	±7'30"	FINISH		PREV																																																																	
DASH								FRAME								C								B								2F								2FF								BS								HOLE QTY								THIS DRAWING IN DESIGN AND DETAIL IS OUR PROPERTY AND MUST NOT BE USED EXCEPT IN CONNECTION WITH OUR WORK ALL RIGHTS OF DESIGN AND INVENTION ARE RESERVED THIS IS AN ELECTRONICALLY GENERATED DOCUMENT -- DO NOT SCALE THIS PRINT								RFP				CAD FILE 169545601e				SIZE	DRAWING NO. PAGE 1 OF 1				REV.
																																																																								DIST								A	169545--60LE				3



C	T1	U1
C	T2	V1
C	T3	W1
C	T4	U2
C	T5	V2
C	T6	W2



	L1	L2	L3	JOIN
START (WYE)	T1 U1	T2 V1	T3 U2	(T4,T5,T6) (U2,V2,W2)
RUN (DELTA)	(T1,T6) (U1,W2)	(T2,T4) (V1,U2)	(T3,T5) (W1,V2)	

				TOLERANCES UNLESS OTHERWISE SPECIFIED		LEESON ELECTRIC CORPORATION			
04	ADDED MAT'L (CWLE) PER ECO-0168542	DS	6/10/2019	DECIMALS					
03	ADDED IEC DESIGNATIONS	MOL	4/27/2012	.00	± .01	DRAWN PG 05/07/82	EXT. WIRING DIAGRAM STAR START – DELTA RUN		
02	REMOVED OBSOLETE STATUS	KJH	6/28/99	.000	± .005	CH'K'D. TEM			
01	REDRAWN ON CAD	DBT	05/30/97	.0000	± .0005	APPR. 05/07/82	MAT'L. Y-CONNECTED START (CWLE) DELTA CONNECTED RUN – SINGLE VOLTAGE		
NO.	REVISION	BY	DATE	FRACTIONS	± 1/64	SCALE 1=1			
THIS DRAWING IN DESIGN AND DETAIL IS OUR PROPERTY AND MUST NOT BE USED EXCEPT IN CONNECTION WITH OUR WORK ALL RIGHTS OF DESIGN AND INVENTION ARE RESERVED				ANGLES	± 1/2°	REF. T2E	FINISH	SIZE	DRAWING NO.
				INCH/MM		FMF ELECTRO POWER		A	005190-01