

PRODUCT INFORMATION PACKET



Model No: 170248.00

Catalog No: 170248.00

Obsolete replaced by 404TTFC6080 - 60 HP 1200 575 TEFC 404T PREM EFF
General Purpose Motors



Regal and Leeson are trademarks of Regal Rexnord Corporation or one of its affiliated companies.
©2021 Regal Rexnord Corporation, All Rights Reserved. MC017097E



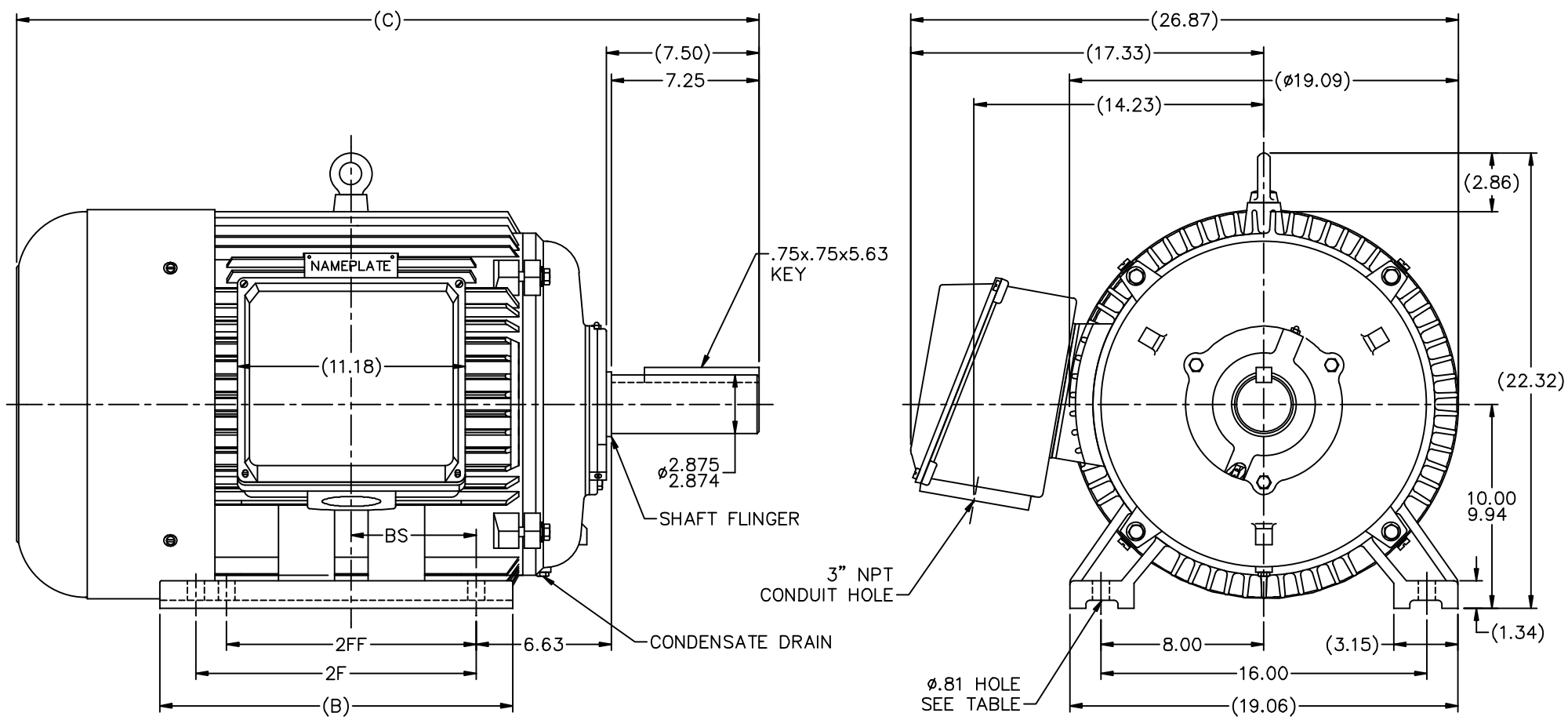


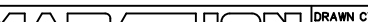
Nameplate Specifications

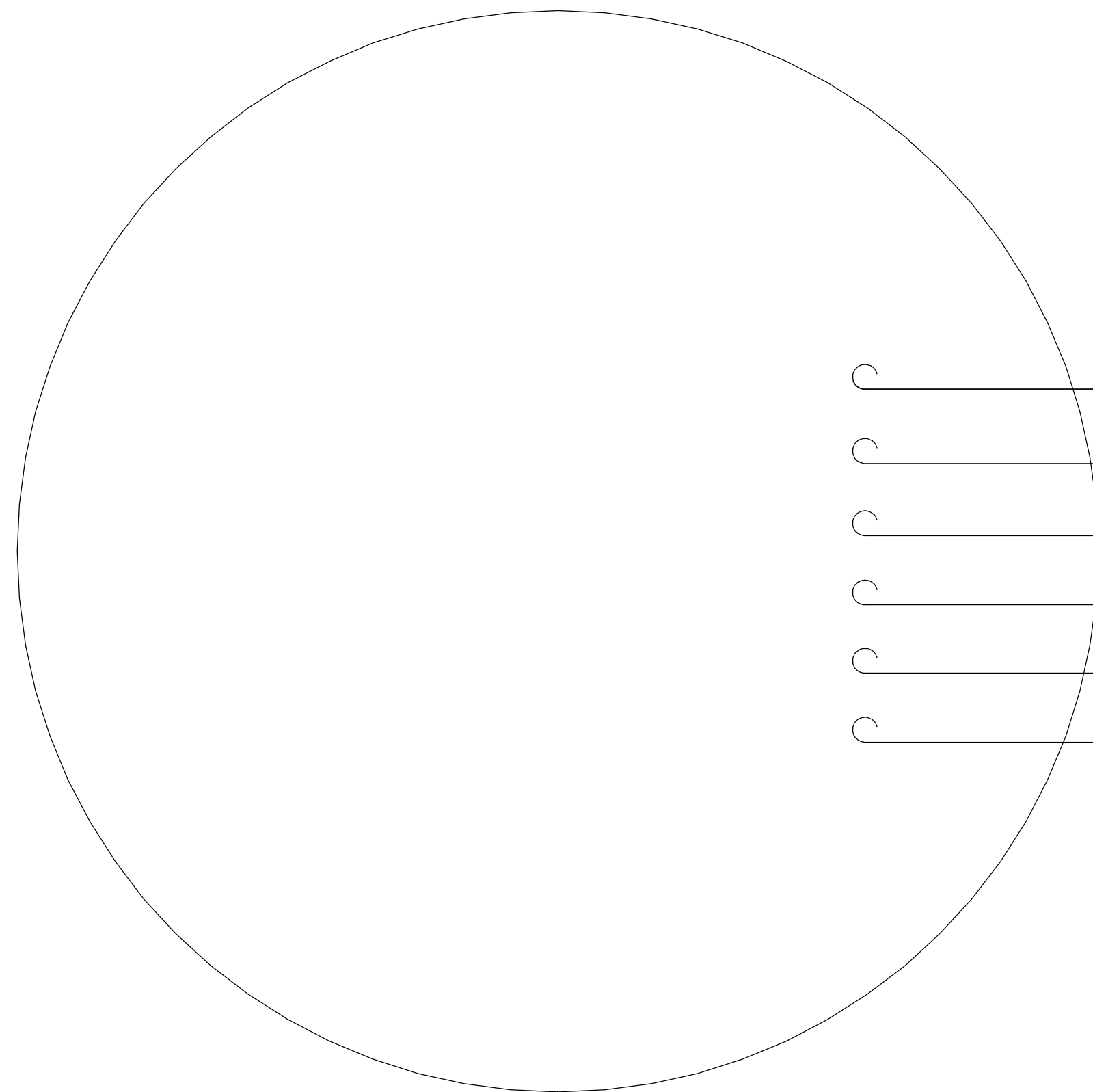
Output HP	60 Hp	Output KW	45.0 kW
Frequency	60 Hz	Voltage	575 V
Current	56.0 A	Speed	1190 rpm
Service Factor	1.15	Phase	3
Efficiency	94.5 %	Power Factor	83.4
Duty	Continuous	Insulation Class	F
Design Code	B	KVA Code	G
Frame	404T	Enclosure	Totally Enclosed Fan Cooled
Thermal Protection	No	Ambient Temperature	40 °C
Drive End Bearing Size	6316	Opp Drive End Bearing Size	6314
UL	Recognized	CSA	Y
CE	Y	IP Code	43
Number of Speeds	1		

Technical Specifications

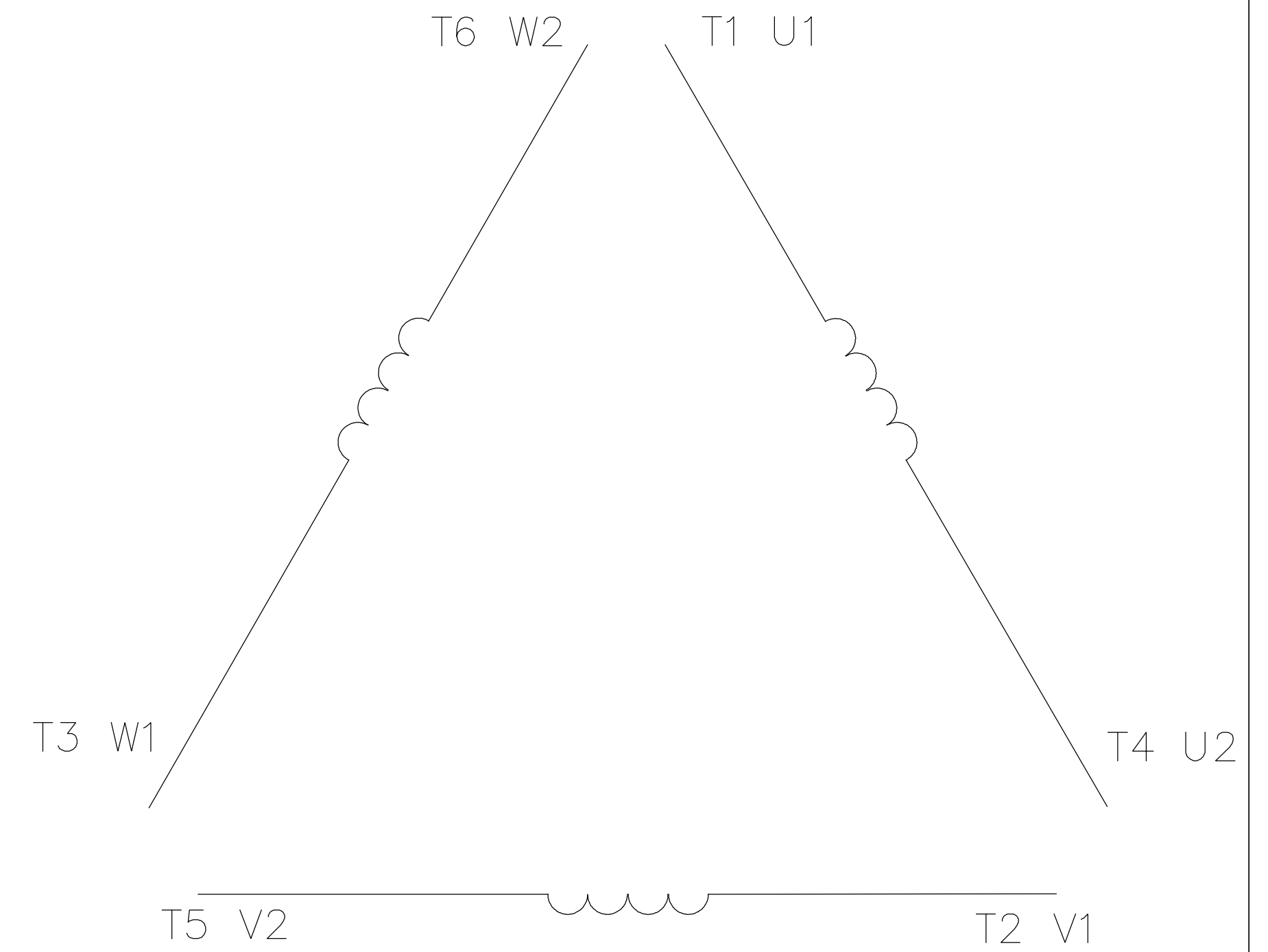
Electrical Type	Squirrel Cage Induction Run	Starting Method	Wye Start Delta Run
Poles	6	Rotation	Reversible
Resistance Main	.1444 Ohms	Mounting	Rigid Base
Motor Orientation	Horizontal	Drive End Bearing	Ball
Opp Drive End Bearing	Ball	Frame Material	Cast Iron
Shaft Type	T	Overall Length	36.42 in
Shaft Diameter	2.875 in	Shaft Extension	7.25 in
Assembly/Box Mounting	F1/F2 CAPABLE		
Outline Drawing	16954560ME	Connection Drawing	005190.01



										TOLERANCES UNLESS SPECIFIED			DRAWN CTO 08-21-2002							
										DEC.	INCHES		CHK	ML	08-29-2002					
										.X	±.1		APPD	SB	08-30-2002					
										.XX	±.03		TITLE OUTLINE - RIGID				SCALE	1=4.75		
								2 CORRECTED FOOT MOUNTING HOLES DISCRPTION		MOL 10-21-2011	.XXX		±.005	400T FR. - TEFC				REF		
								1 NEW DRAWING		CTO 08-30-2002	SB		.XXXX	±.0005	MAT'L				FMF	
								NO. REVISION		BY & DATE	CHK		ANG	±7'30"	FINISH				PREV	
1681	404T	36.42	15.83	12.25	-	5.39	4													
1631	405T	37.91	17.32	13.75	12.25	6.14	6													



C	T1	U1
C	T2	V1
C	T3	W1
C	T4	U2
C	T5	V2
C	T6	W2



	L1	L2	L3	JOIN
START (WYE)	T1 U1	T2 V1	T3 U2	(T4,T5,T6) (U2,V2,W2)
RUN (DELTA)	(T1,T6) (U1,W2)	(T2,T4) (V1,U2)	(T3,T5) (W1,V2)	

				TOLERANCES UNLESS OTHERWISE SPECIFIED		<div>LEESON ELECTRIC CORPORATION</div>			
04	ADDED MAT'L (CWLE) PER ECO-0168542	DS	6/10/2019	DECIMALS					
03	ADDED IEC DESIGNATIONS	MOL	4/27/2012	.00	± .01	DRAWN PG 05/07/82	EXT. WIRING DIAGRAM STAR START – DELTA RUN		
02	REMOVED OBSOLETE STATUS	KJH	6/28/99	.000	± .005	CH'K'D. TEM			
01	REDRAWN ON CAD	DBT	05/30/97	.0000	± .0005	APPR. 05/07/82	MAT'L. Y-CONNECTED START (CWLE) DELTA CONNECTED RUN – SINGLE VOLTAGE		
NO.	REVISION	BY	DATE	FRACTIONS	± 1/64	SCALE 1=1			
THIS DRAWING IN DESIGN AND DETAIL IS OUR PROPERTY AND MUST NOT BE USED EXCEPT IN CONNECTION WITH OUR WORK ALL RIGHTS OF DESIGN AND INVENTION ARE RESERVED				ANGLES	± 1/2°	REF. T2E	FINISH	SIZE	DRAWING NO.
				INCH/MM		FMF ELECTRO POWER		A	005190-01