

PRODUCT INFORMATION PACKET



Model No: 170224.00

Catalog No: 170224.00

LETE, REPLACED BY 284TSTFCD6005** ..25..3550 RPM.284TS.TEFC.575V.3PH.60HZ.CONT.40C.1.15SF.RIGID....

General Purpose Motors



Regal and Leeson are trademarks of Regal Rexnord Corporation or one of its affiliated companies.

©2021 Regal Rexnord Corporation, All Rights Reserved. MC017097E





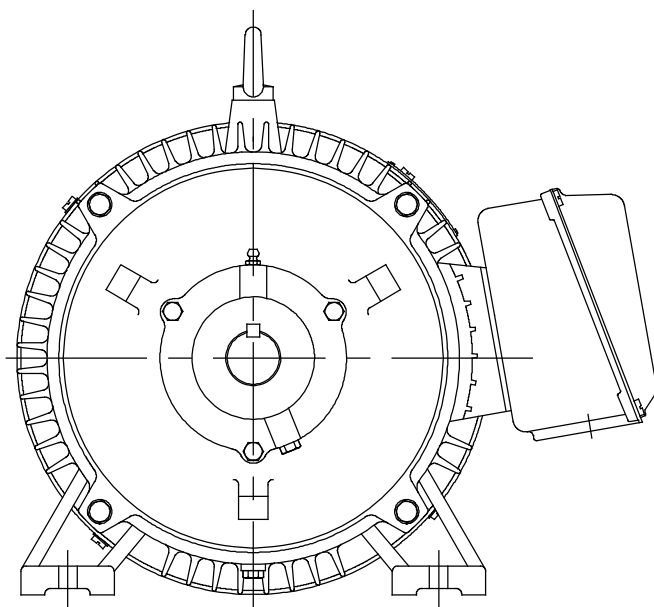
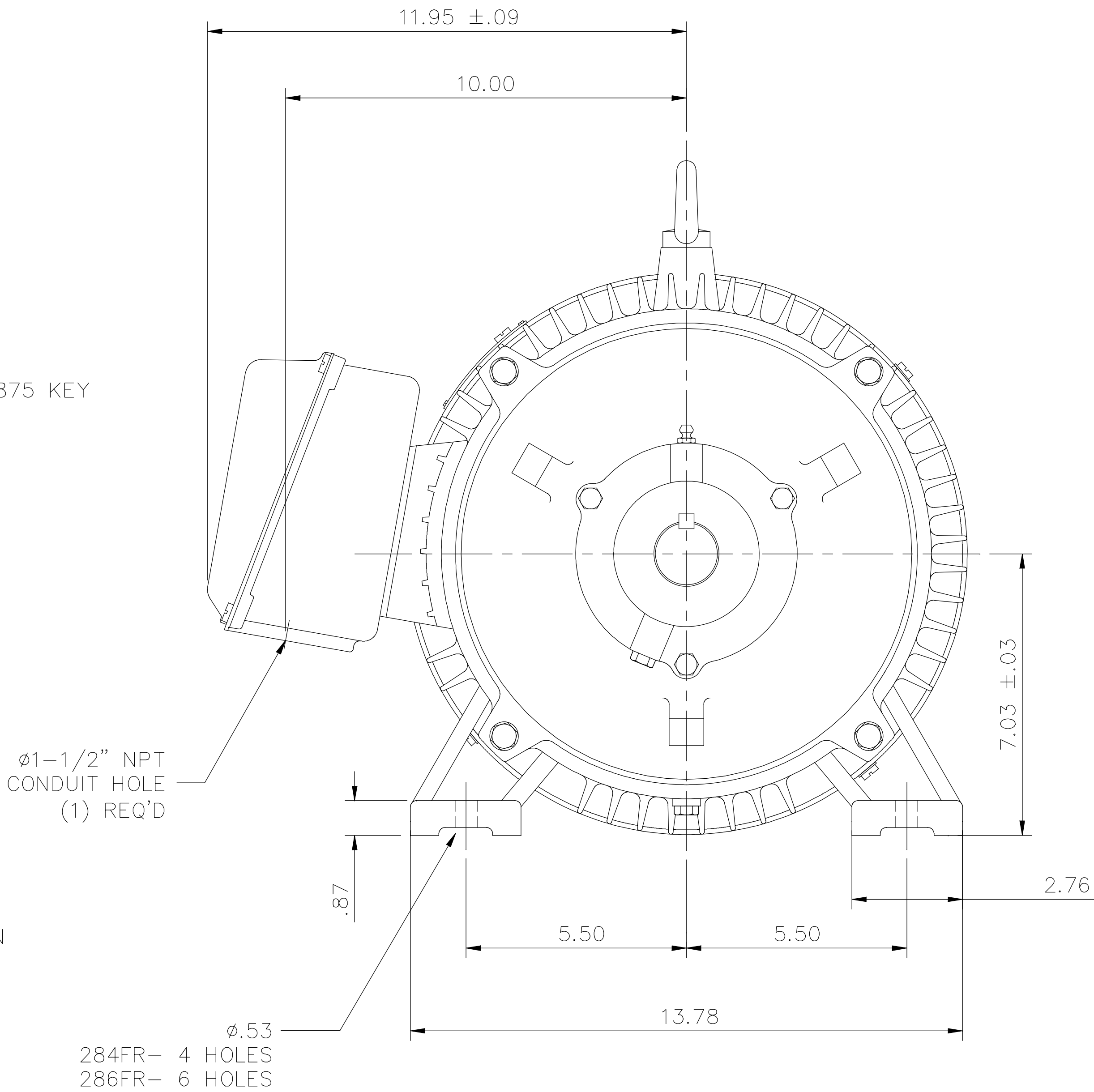
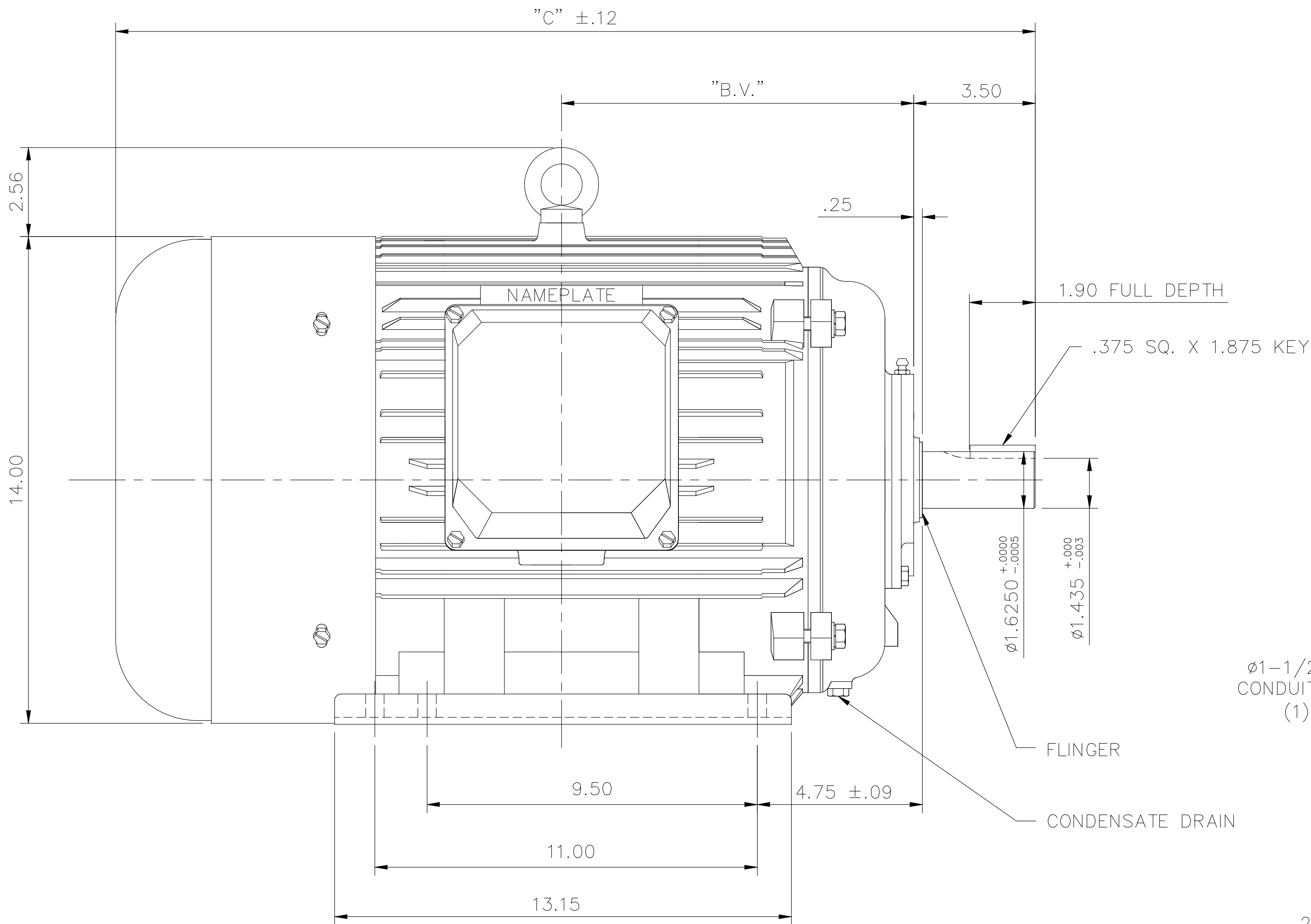
Nameplate Specifications

Output HP	25 Hp	Output KW	18.7 kW
Frequency	60 Hz	Voltage	575 V
Current	22.7 A	Speed	3555 rpm
Service Factor	1.15	Phase	3
Efficiency	93 %	Power Factor	88
Duty	Continuous	Insulation Class	F
Design Code	B	KVA Code	G
Frame	284TS	Enclosure	Totally Enclosed Fan Cooled
Thermal Protection	No	Ambient Temperature	40 °C
Drive End Bearing Size	6311	Opp Drive End Bearing Size	6309
UL	Recognized	CSA	Y
CE	Y	IP Code	43
Number of Speeds	1		

Technical Specifications

Electrical Type	Squirrel Cage Induction Run	Starting Method	Wye Start Delta Run
Poles	2	Rotation	Reversible
Resistance Main	.225 Ohms	Mounting	Rigid Base
Motor Orientation	Horizontal	Drive End Bearing	Ball
Opp Drive End Bearing	Ball	Frame Material	Cast Iron
Shaft Type	TS	Overall Length	24.88 in
Shaft Diameter	1.625 in	Shaft Extension	3.25 in
Assembly/Box Mounting	F1/F2 CAPABLE		
Connection Drawing	005190.01	Outline Drawing	16954060

169540-60



F2 VIEW

FRAME DESIGN	"C"	"BV"
284TS	24.88	4.72
286TS	26.46	3.97

NO.	REVISION	BY & DATE	CHK	ANG	TOLERANCES UNLESS SPECIFIED		FINISH	CAD FILE	SIZE	DRAWING NO.	PAGE	OF	REV.
					DEC.	INCHES							
H	ADDED F2 VIEW ECO-0134445	WGJ 11/10/2017	EMH	.X	±.1								
03	REMOVED REFERENCE TO 250 FRAME	MOL 08/15/2012		.XX	±.03								
02	REDRAWN TO CURRENT CAD STANDARDS	CJK 11/1/01		.XXX	±.005								
01	ADDED HOLES 286TS BASE	JKK 07/13/99		.XXXX	±.0005								
THIS DRAWING IN DESIGN AND DETAIL IS OUR PROPERTY AND MUST NOT BE USED EXCEPT IN CONNECTION WITH OUR WORK ALL RIGHTS OF DESIGN AND INVENTION ARE RESERVED THIS IS AN ELECTRONICALLY GENERATED DOCUMENT - DO NOT SCALE THIS PRINT								RFP					
								DIST					



REGAL-BELOIT CORPORATION

TITLE OUTLINE-280TS FRAME, TEFC-RIGID
NEW CONDUIT BOX

MAT'L. CAST IRON

FINISH

DRAWN JJK 03/29/99

CHK

APPD PG 03/31/99

SCALE 1=4

REF

FMF

PREV

B 169540-60 H

005190-01



A diagram of a multi-ported device. It consists of a central vertical curved line. To the left of this line are six horizontal lines, each starting with a 'C' label. To the right of the central line are six horizontal lines, each starting with a 'T' label followed by a 'U' or 'V' label. The labels are: C, T1, U1, T2, V1, T3, W1, T4, U2, T5, V2, and T6, W2.



	L1	L2	L3	JOIN
START (WYE)	T1 U1	T2 V1	T3 U2	(T4,T5,T6) (U2,V2,W2)
RUN (DELTA)	(T1,T6) (U1,W2)	(T2,T4) (V1,U2)	(T3,T5) (W1,V2)	

				TOLERANCES UNLESS OTHERWISE SPECIFIED		<div>LEESON ELECTRIC CORPORATION</div>			
04	ADDED MAT'L (CWLE) PER ECO-0168542	DS	6/10/2019	DECIMALS					
03	ADDED IEC DESIGNATIONS	MOL	4/27/2012	.00	± .01	DRAWN PG 05/07/82	EXT. WIRING DIAGRAM STAR START – DELTA RUN		
02	REMOVED OBSOLETE STATUS	KJH	6/28/99	.000	± .005	CH'K'D. TEM			
01	REDRAWN ON CAD	DBT	05/30/97	.0000	± .0005	APPR. 05/07/82	MAT'L. Y-CONNECTED START (CWLE) DELTA CONNECTED RUN – SINGLE VOLTAGE		
NO.	REVISION	BY	DATE	FRACTIONS	± 1/64	SCALE 1=1			
THIS DRAWING IN DESIGN AND DETAIL IS OUR PROPERTY AND MUST NOT BE USED EXCEPT IN CONNECTION WITH OUR WORK ALL RIGHTS OF DESIGN AND INVENTION ARE RESERVED				ANGLES	± 1/2°	REF. T2E	FINISH	SIZE	DRAWING NO.
				INCH/MM		FMF ELECTRO POWER		A	005190-01