

PRODUCT INFORMATION PACKET



Model No: 170222.00

Catalog No: 170222.00

****OBSOLETE, REPLACED BY 284TTFC6080**** 15 HP 1200 575 TEFC 284T PREM EFF
General Purpose Motors



Regal and Leeson are trademarks of Regal Rexnord Corporation or one of its affiliated companies.
©2021 Regal Rexnord Corporation, All Rights Reserved. MC017097E





Nameplate Specifications

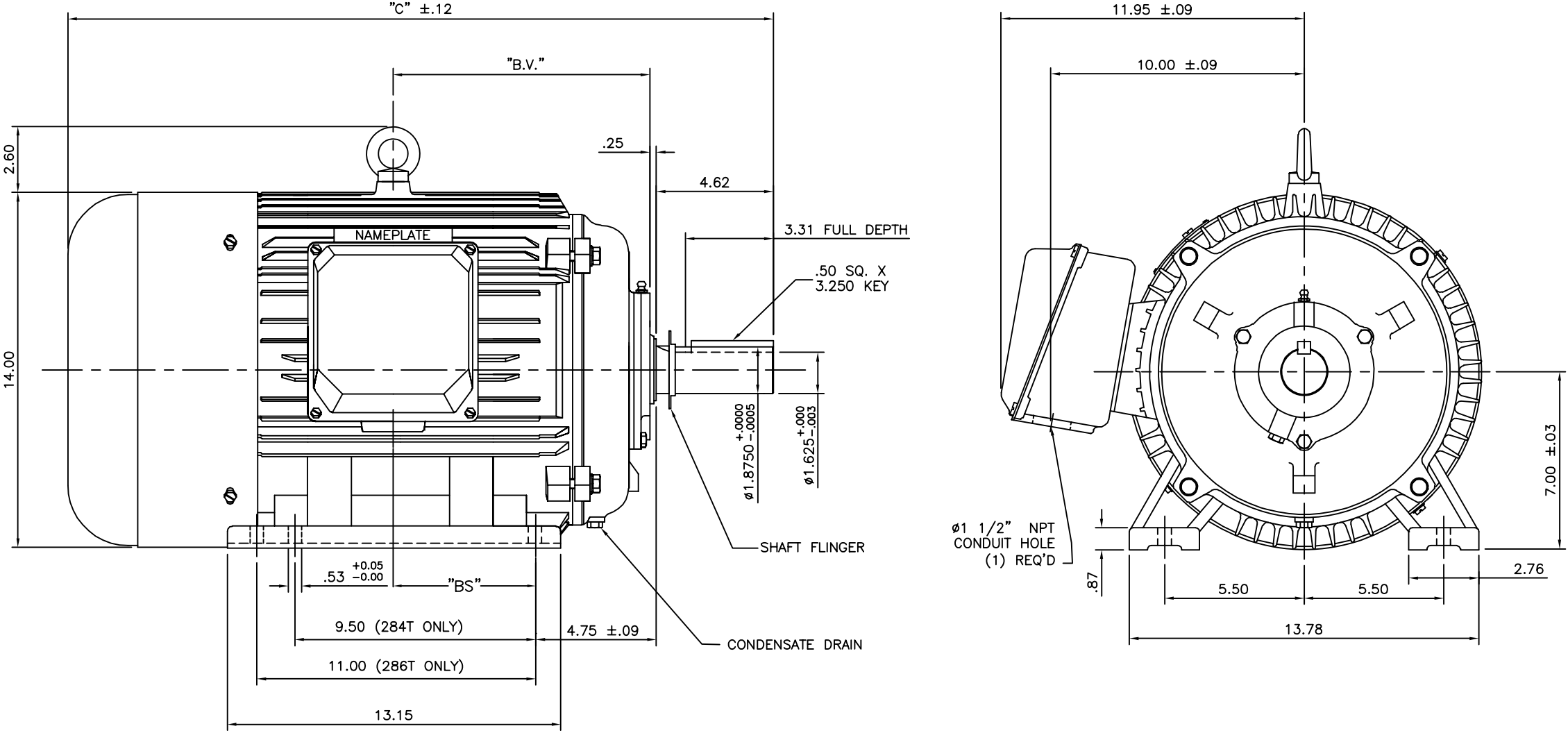
Output HP	15 Hp	Output KW	11.2 kW
Frequency	60 Hz	Voltage	575 V
Current	16.2 A	Speed	1185 rpm
Service Factor	1.15	Phase	3
Efficiency	92.4 %	Power Factor	74.6
Duty	Continuous	Insulation Class	F
Design Code	B	KVA Code	H
Frame	284T	Enclosure	Totally Enclosed Fan Cooled
Thermal Protection	No	Ambient Temperature	40 °C
Drive End Bearing Size	6311	Opp Drive End Bearing Size	6309
UL	Recognized	CSA	Y
CE	Y	IP Code	43
Hazardous Location	DIVISION 2	Number of Speeds	1

Technical Specifications

Electrical Type	Squirrel Cage Induction Run	Starting Method	Wye Start Delta Run
Poles	6	Rotation	Reversible
Mounting	Rigid Base	Motor Orientation	Horizontal
Drive End Bearing	Ball	Opp Drive End Bearing	Ball
Frame Material	Cast Iron	Shaft Type	T
Overall Length	26.26 in	Shaft Diameter	1.875 in
Shaft Extension	4.62 in	Assembly/Box Mounting	F1/F2 CAPABLE
Outline Drawing	16953960	Connection Drawing	005190.01


This is an uncontrolled document once printed or downloaded and is subject to change without notice. Date Created:10/11/2021

169539-60

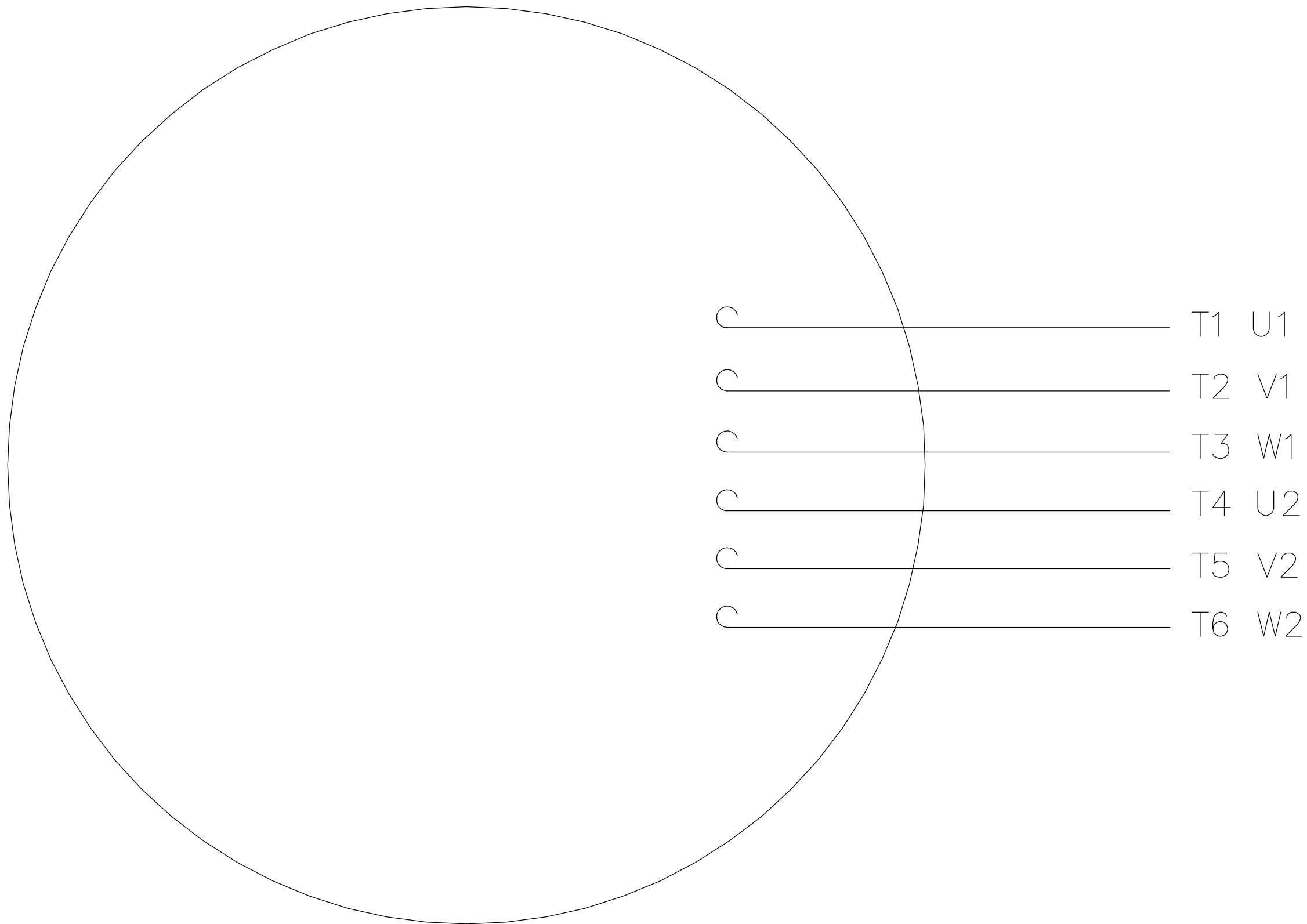


NOTE: 286T HAS 6 MTG. HOLES,
USING 284T AND 286T LOCATIONS

FRAME DESIGN	"C"	"BV"	"BS"
284T	26.26	9.65	
286T	27.83	10.43	5.51

				TOLERANCES UNLESS SPECIFIED		 REGAL-BELOIT CORPORATION	DRAWN CJK 07/16/01				
				DEC.	INCHES		CHK				
				.X	±.1		APPD				
03	ECO-0048910, REVISED 'BA' DIM.		RFH 04/04/14	EH	.XX	±.03	TITLE OUTLINE-280T FRAME, TEFC-RIGID		SCALE	N/A	
02	REDRAWN TO CURRENT CAD STANDARDS		CJK 07/13/99		.XXX	±.005	NEW CONDUIT BOX		REF		
01	ADDED HOLE FOR 286T BASE		JJK 11/01/01		.XXXX	±.0005	MAT'L. CAST IRON		FMF		
NO.	REVISION		BY & DATE	CHK	ANG	±1/2'	FINISH		PREV		
THIS DRAWING IN DESIGN AND DETAIL IS OUR PROPERTY AND MUST NOT BE USED EXCEPT IN CONNECTION WITH OUR WORK ALL RIGHTS OF DESIGN AND INVENTION ARE RESERVED THIS IS AN ELECTRONICALLY GENERATED DOCUMENT - DO NOT SCALE THIS PRINT				RFP		CAD FILE		SIZE	DRAWING NO. PAGE OF		REV.
				DIST				A	169539-60		03

LINE LEADS



				TOLERANCES UNLESS OTHERWISE SPECIFIED		LEESON ELECTRIC CORPORATION				
04	ADDED MAT'L (CWLE) PER ECO-0168542	DS	6/10/2019	DECIMALS						
03	ADDED IEC DESIGNATIONS	MOL	4/27/2012	.00	± .01	DRAWN PG 05/07/82	TITLE EXT. WIRING DIAGRAM			
02	REMOVED OBSOLETE STATUS	KJH	6/28/99	.000	± .005	CH'K'D. TEM	STAR START – DELTA RUN			
01	REDRAWN ON CAD	DBT	05/30/97	.0000	± .0005	APPR. 05/07/82	MAT'L. Y-CONNECTED START (CWLE)			
NO.	REVISION	BY	DATE	FRACTIONS	± 1/64	SCALE 1=1	DELTA CONNECTED RUN – SINGLE VOLTAGE			
THIS DRAWING IN DESIGN AND DETAIL IS OUR PROPERTY AND MUST NOT BE USED EXCEPT IN CONNECTION WITH OUR WORK ALL RIGHTS OF DESIGN AND INVENTION ARE RESERVED				ANGLES	± 1/2°	REF. T2E	FINISH		SIZE	DRAWING NO.
				INCH/MM		FMF ELECTRO POWER			A	005190-01