

# PRODUCT INFORMATION PACKET



Model No: 170207.00  
Catalog No: 170207.00  
7.50 HP General Purpose Motor, 3 phase, 1800 RPM, 575 V, 213T Frame, TEFC  
General Purpose Motors



Regal and Leeson are trademarks of Regal Rexnord Corporation or one of its affiliated companies.  
©2021 Regal Rexnord Corporation, All Rights Reserved. MC017097E





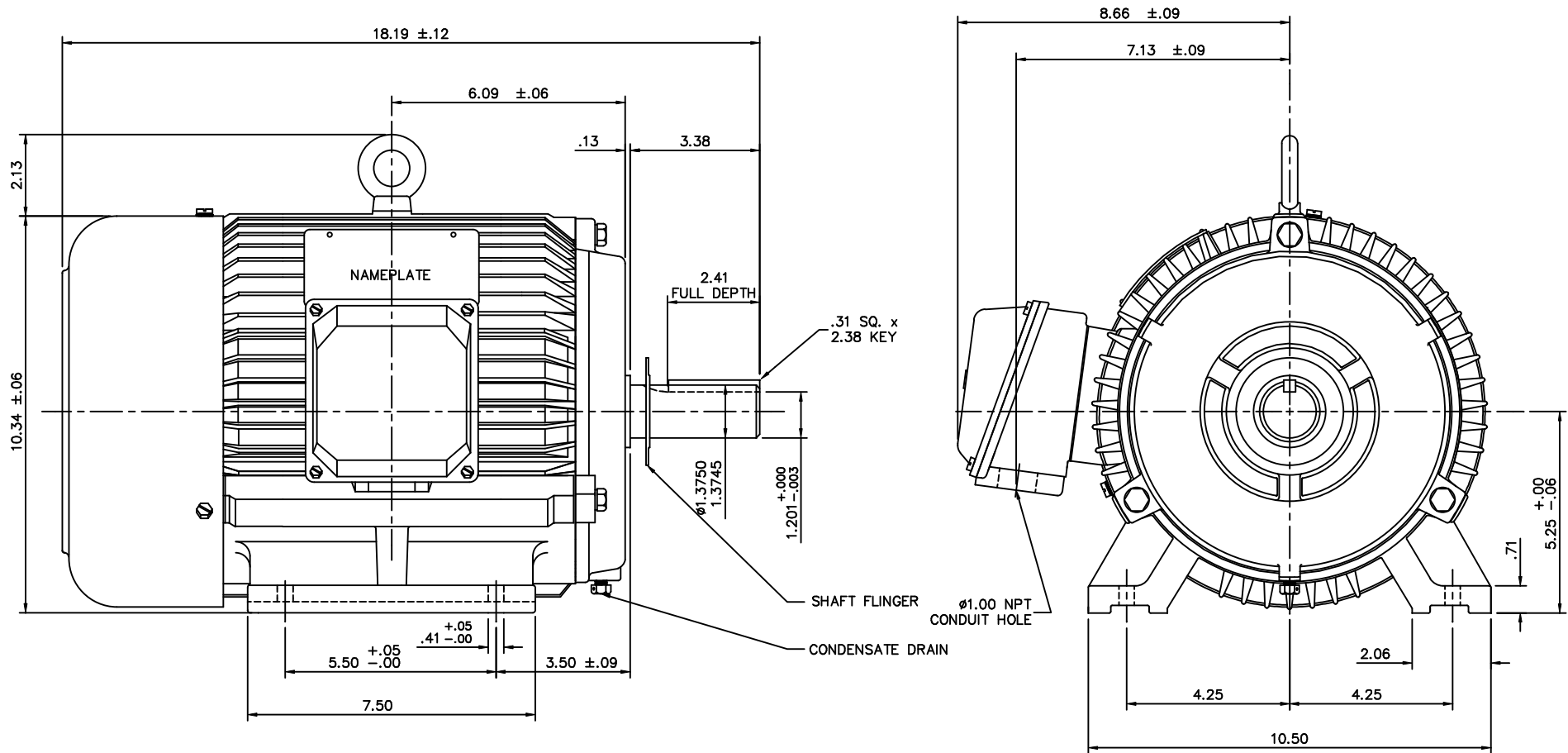
### Nameplate Specifications

Output HP	7.50 Hp	Output KW	5.6 kW
Frequency	60 Hz	Voltage	575 V
Current	7.5 A	Speed	1770 rpm
Service Factor	1.15	Phase	3
Efficiency	91.7 %	Power Factor	82
Duty	Continuous	Insulation Class	F
Design Code	B	KVA Code	J
Frame	213T	Enclosure	Totally Enclosed Fan Cooled
Thermal Protection	No	Ambient Temperature	40 °C
Drive End Bearing Size	6308	Opp Drive End Bearing Size	6306
UL	Recognized	CSA	Y
CE	Y	IP Code	43
Number of Speeds	1		

### Technical Specifications

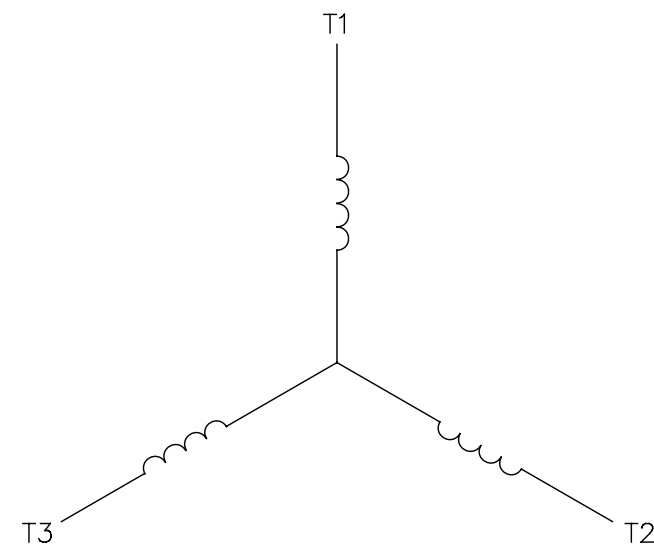
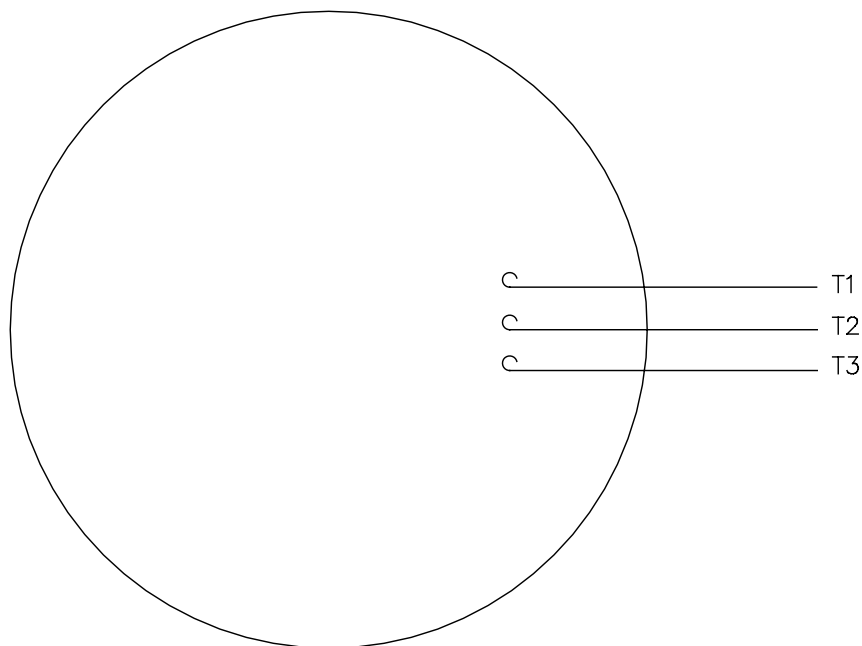
Electrical Type	Squirrel Cage Induction Run	Starting Method	Across The Line
Poles	4	Rotation	Reversible
Resistance Main	1.161 Ohms	Mounting	Rigid Base
Motor Orientation	Horizontal	Drive End Bearing	Ball
Opp Drive End Bearing	Ball	Frame Material	Cast Iron
Shaft Type	T	Overall Length	18.19 in
Shaft Diameter	1.375 in	Shaft Extension	3.38 in
Assembly/Box Mounting	F1/F2 CAPABLE		
Connection Drawing	005102.01	Outline Drawing	16953560

This is an uncontrolled document once printed or downloaded and is subject to change without notice. Date Created:10/07/2021




					TOLERANCES UNLESS OTHERWISE SPECIFIED			<b>LEESON</b> ELECTRIC CORPORATION				
						DEC.	INCHES	METRIC				
						.X	±.1	±2.5	DRAWN JJK 03/25/99	TITLE	OUTLINE - 213T FRAME	
						.XX	±.03	±.76	APPR. PG 03/31/99		TEFC - RIGID MOUNT, NEW CON-BOX	
01	REDRAWN TO CURRENT CAD STANDARDS			CJK 9/17/01		.XXX	±.005	±.127	R.F.P.	MAT'L.	CAST IRON	
NO.	REVISION			BY & DATE	CH'K'D.	.XXXX	±.0005	±.0127	SCALE 3=8			
THIS DRAWING IN DESIGN AND DETAIL IS OUR PROPERTY AND MUST NOT BE USED EXCEPT IN CONNECTION WITH OUR WORK ALL RIGHTS OF DESIGN AND INVENTION ARE RESERVED THIS IS AN ELECTRONICALLY GENERATED DOCUMENT - DO NOT SCALE THIS PRINT						FRACTIONS	±1/64	REF.	169501	FINISH	REV.	DRAWING NO.
						ANGLES	±1/2°	FMF		HEBEI	01	169535-60

LINE LEADS



CONNECT LEADS AS FOLLOWS  
FOR FOUR CONDUCTOR CORD ( )

CORD	L1 (RED)	L2 (WHITE)	L3 (BLACK)	(GREEN)
MOTOR	T1	T2	T3	GROUND

				TOLERANCES UNLESS SPECIFIED		 <b>Regal Beloit America, Inc.</b>		DRAWN		JRW 9/11/75	
				DEC.	INCHES			CHK			
				.X	±.1			APPD JCW 9/11/75			
08	UPDATED TO REGAL LOGO	SAJ 06/26/15	AJY	.XX	±.01	TITLE EXTERNAL WIRING DIAGRAM TYPE "T" W/O PROTECTOR		SCALE		1=1	
07	UPDATED TO CURRENT STANDARDS	DBT 5/30/97		.XXX	±.005			REF		W-T6343-6	
06	REDRAWN ON CAD; ADDED DECAL NUMBER	SAW 1/24/95		.XXXX	±.0005	MAT'L DECAL - 004169		FMF		6T17FB7	
NO.	REVISION	BY & DATE	CHK	ANG	±1/2"	FINISH		PREV			
THIS DRAWING IN DESIGN AND DETAIL IS OUR PROPERTY AND MUST NOT BE USED EXCEPT IN CONNECTION WITH OUR WORK ALL RIGHTS OF DESIGN AND INVENTION ARE RESERVED THIS IS AN ELECTRONICALLY GENERATED DOCUMENT - DO NOT SCALE THIS PRINT				RFP 5/1/02		CAD FILE 00510201		SIZE A	DRAWING NO. 005102-01		REV 08
				DIST BRF-NLV							