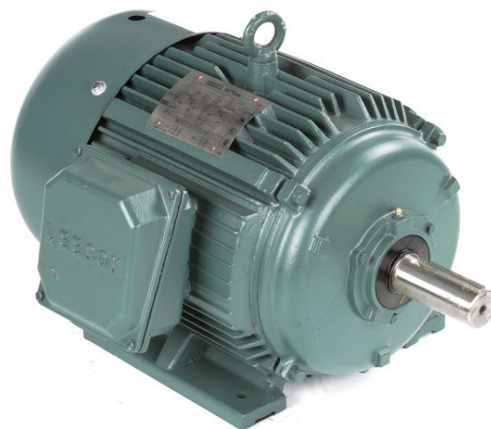


PRODUCT INFORMATION PACKET



Model No: 170198.00
Catalog No: 170198.00
Obsolete replaced by 254TTFC6005 - 15 HP 3600 575 TEFC 254T PREM EFF
General Purpose Motors



Regal and Leeson are trademarks of Regal Rexnord Corporation or one of its affiliated companies.
©2021 Regal Rexnord Corporation, All Rights Reserved. MC017097E





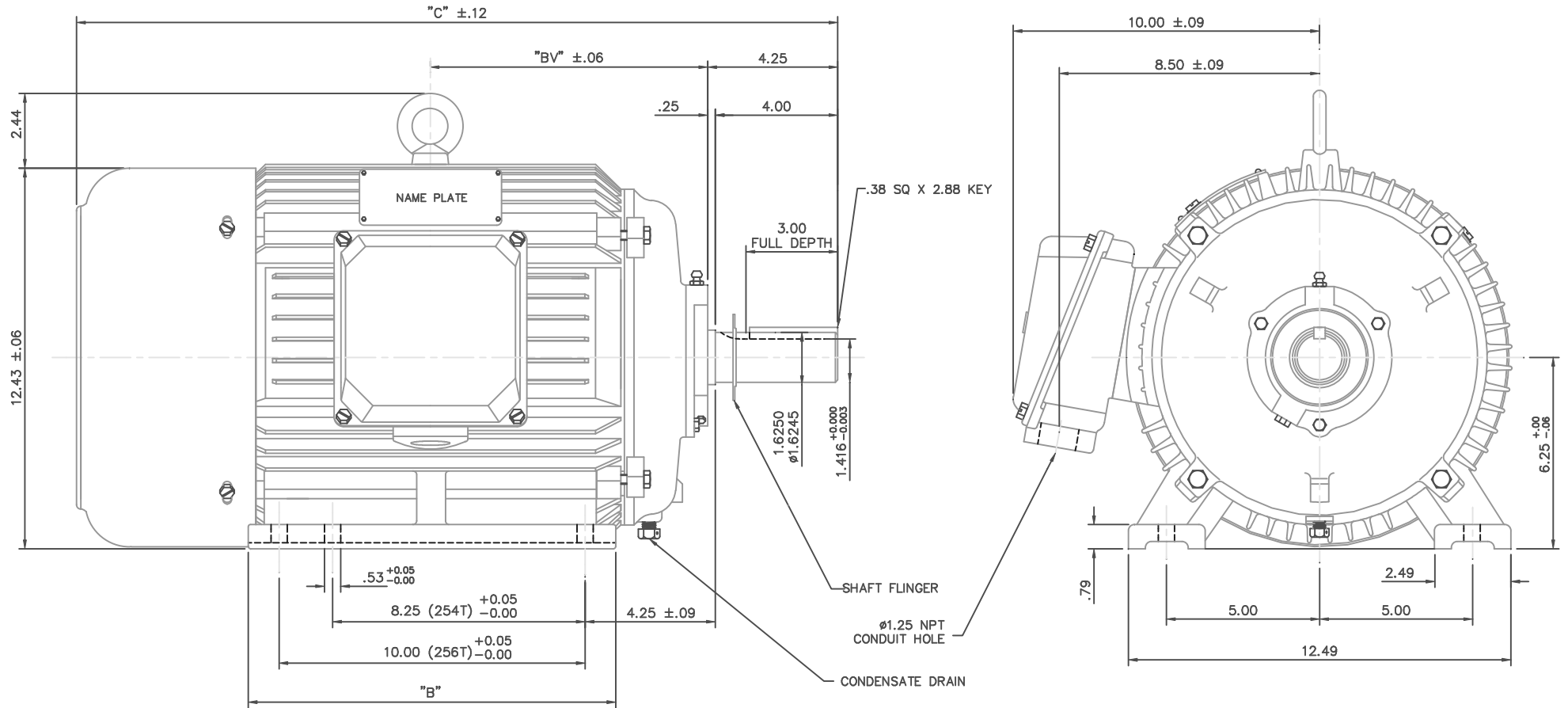
Nameplate Specifications

Output HP	15 Hp	Output KW	11.2 kW
Frequency	60 Hz	Voltage	575 V
Current	13.9 A	Speed	3550 rpm
Service Factor	1.15	Phase	3
Efficiency	92.4 %	Power Factor	88.5
Duty	Continuous	Insulation Class	F
Design Code	B	KVA Code	G
Frame	254T	Enclosure	Totally Enclosed Fan Cooled
Thermal Protection	No	Ambient Temperature	40 °C
Drive End Bearing Size	6309	Opp Drive End Bearing Size	6308
UL	Recognized	CSA	Y
CE	Y	IP Code	43
Number of Speeds	1		

Technical Specifications

Electrical Type	Squirrel Cage Induction Run	Starting Method	Wye Start Delta Run
Poles	2	Rotation	Reversible
Resistance Main	.107 Ohms	Mounting	Rigid Base
Motor Orientation	Horizontal	Drive End Bearing	Ball
Opp Drive End Bearing	Ball	Frame Material	Cast Iron
Shaft Type	T	Overall Length	23.19 in
Shaft Diameter	1.625 in	Shaft Extension	4 in
Assembly/Box Mounting	F1/F2 CAPABLE		
Connection Drawing	005190.01	Outline Drawing	16953860-254T

This is an uncontrolled document once printed or downloaded and is subject to change without notice. Date Created:10/11/2021



NOTE: 256T HAS 6 MTG. HOLES, USING BOTH 254T AND 256T "2F" LOCATIONS.

FRAME	"C"	"B"	"BV"
254T	23.19	10.25	8.19
256T	24.92	12.00	9.06

				TOLERANCES UNLESS OTHERWISE SPECIFIED			LEESON ELECTRIC CORPORATION		
				DEC.	INCHES	METRIC			
				.X	$\pm .1$	± 2.5	DRAWN	DRZ 05/22/01	TITLE
				.XX	$\pm .03$	$\pm .76$	APPR.		OUTLINE - 250 FRAME
				.XXX	$\pm .005$	$\pm .127$	R.F.P.		TEFC - RIGID, NEW CON-BOX
				.XXXX	$\pm .0005$	$\pm .0127$	SCALE	5=16	MAT'L
									CAST IRON
									FINISH
									REV.
									DRAWING NO.
									169538-60

THIS DRAWING IN DESIGN AND DETAIL IS OUR PROPERTY AND MUST NOT BE USED EXCEPT IN CONNECTION WITH OUR WORK. ALL RIGHTS OF DESIGN AND INVENTION ARE RESERVED. THIS IS AN ELECTRONICALLY GENERATED DOCUMENT - DO NOT SCALE THIS PRINT.

LINE LEADS

	L1	L2	L3	JOIN
START (WYE)	T1 U1	T2 V1	T3 U2	(T4,T5,T6) (U2,V2,W2)
RUN (DELTA)	(T1,T6) (U1,W2)	(T2,T4) (V1,U2)	(T3,T5) (W1,V2)	

				TOLERANCES UNLESS OTHERWISE SPECIFIED		LEESON ELECTRIC CORPORATION				
04	ADDED MAT'L (CWLE) PER ECO-0168542	DS	6/10/2019	DECIMALS						
03	ADDED IEC DESIGNATIONS	MOL	4/27/2012	.00	± .01	DRAWN PG 05/07/82	TITLE EXT. WIRING DIAGRAM			
02	REMOVED OBSOLETE STATUS	KJH	6/28/99	.000	± .005	CH'K'D. TEM	STAR START – DELTA RUN			
01	REDRAWN ON CAD	DBT	05/30/97	.0000	± .0005	APPR. 05/07/82	MAT'L. Y-CONNECTED START (CWLE)			
NO.	REVISION	BY	DATE	FRACTIONS	± 1/64	SCALE 1=1	DELTA CONNECTED RUN – SINGLE VOLTAGE			
THIS DRAWING IN DESIGN AND DETAIL IS OUR PROPERTY AND MUST NOT BE USED EXCEPT IN CONNECTION WITH OUR WORK ALL RIGHTS OF DESIGN AND INVENTION ARE RESERVED				ANGLES	± 1/2°	REF. T2E	FINISH	SIZE A	DRAWING NO. 005190-01	
				INCH/MM		FMF ELECTRO POWER				