

PRODUCT INFORMATION PACKET



Model No: 170166.60

Catalog No: 170166.60

General Purpose Motor, 7.50 & 5 HP, 3 Ph, 60 & 50 Hz, 208-230/460 & 190/380 V, 3600 & 3000 RPM,
213TC Frame, TEFC



Regal and Leeson are trademarks of Regal Rexnord Corporation or one of its affiliated companies.

©2023 Regal Rexnord Corporation, All Rights Reserved. MC017097E



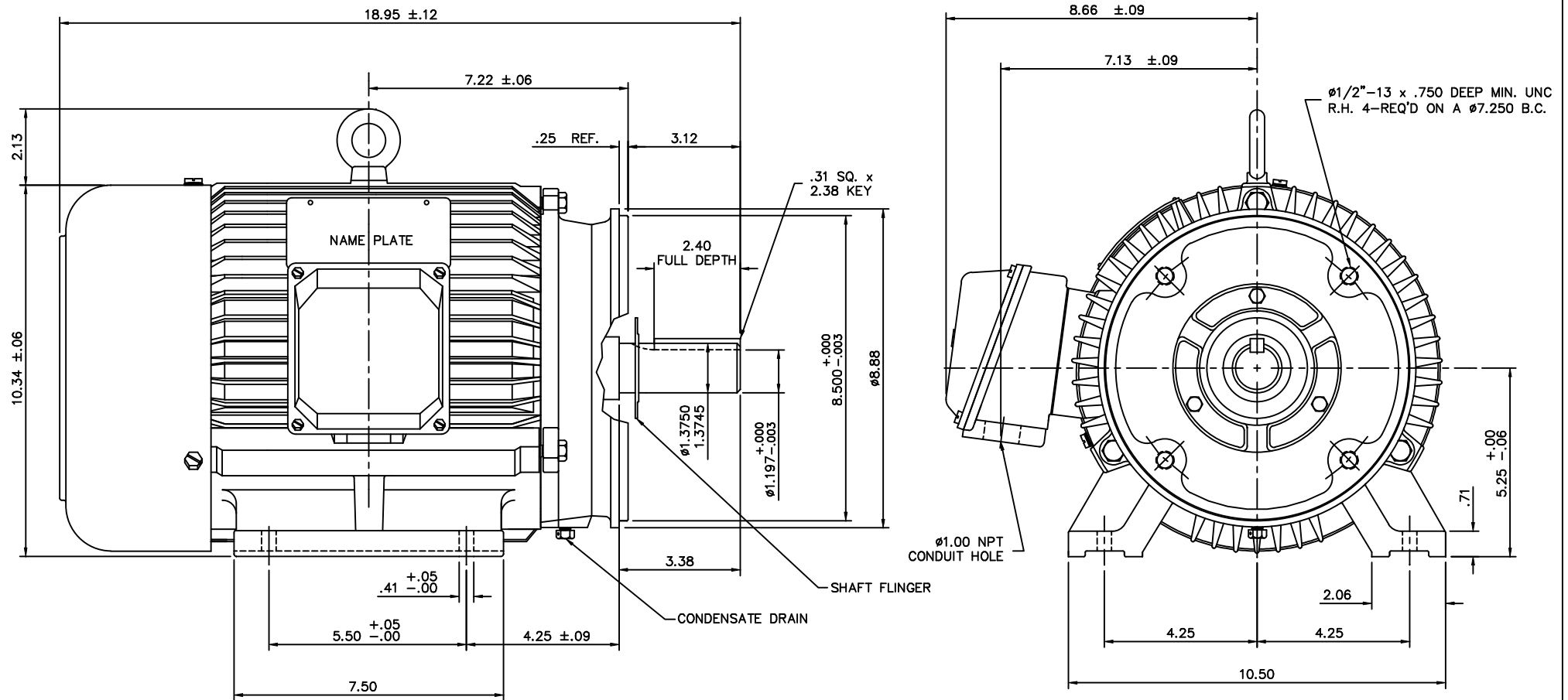


Nameplate Specifications

Phase	3	Output HP	7.50 & 5 Hp
Output KW	5.6 & 3.7 kW	Voltage	208-230/460 & 190/380 V
Speed	3539 & 2950 rpm	Service Factor	1.15 & 1.15
Frame	213TC	Enclosure	Totally Enclosed Fan Cooled
Thermal Protection	No Protection	Efficiency	91 & 90.2 %
Ambient Temperature	40 °C	Frequency	60 & 50 Hz
Current	20-18.3/9.2 & 14.4/7.2 A	Power Factor	85.5
Duty	Continuous	Insulation Class	F
Design Code	B	KVA Code	H
Drive End Bearing Size	6308	Opp Drive End Bearing Size	6306
UL	Recognized	CSA	Y
CE	Y	IP Code	43
Number of Speeds	1		

Technical Specifications

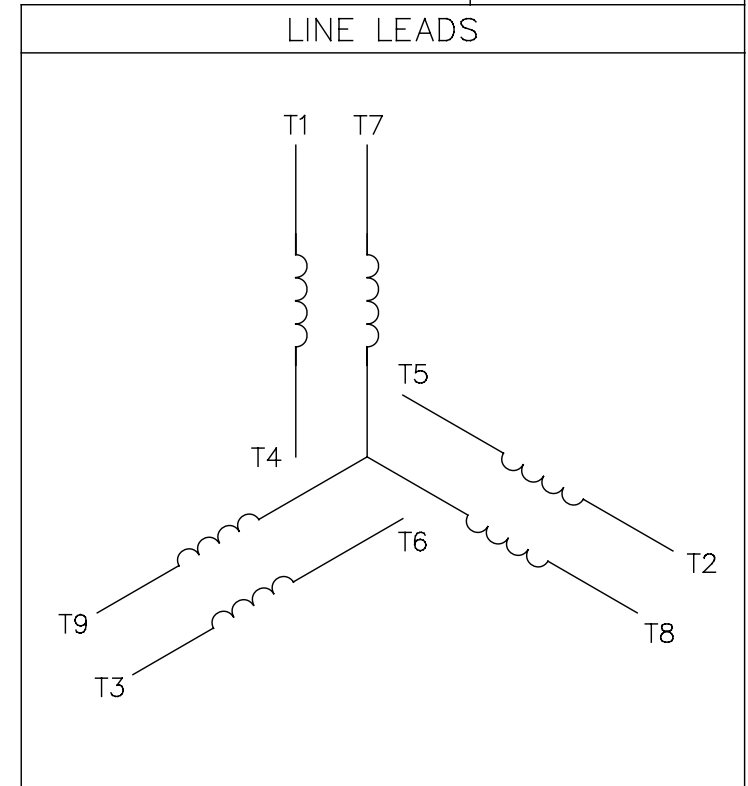
Electrical Type	Squirrel Cage Inverter Rated	Starting Method	Line Or Inverter
Poles	2	Rotation	Reversible
Resistance Main	1.015 Ohms	Mounting	Rigid Base
Motor Orientation	Horizontal	Drive End Bearing	Ball
Opp Drive End Bearing	Ball	Frame Material	Cast Iron
Shaft Type	T	Overall Length	18.95 in
Shaft Diameter	1.375 in	Shaft Extension	3.38 in
Assembly/Box Mounting	F1/F2 CAPABLE		
Connection Drawing	005010.01	Outline Drawing	169561.60




				TOLERANCES UNLESS OTHERWISE SPECIFIED			LEESON ELECTRIC CORPORATION		
				DEC.	INCHES	METRIC			
				.X	$\pm .1$	± 2.5	DRAWN DRZ 04/05/01	TITLE	
				.XX	$\pm .03$	$\pm .75$	APPR.	OUTLINE - 213T FRAME, TEFC	
				.XXX	$\pm .005$	$\pm .127$	R.F.P.	"C-FACE" - RIGID MOUNT, NEW CON-BOX	
01	REDRAWN TO CURRENT CAD STANDARDS	CJK 9/17/01	CH'K'D.	.XXXX	$\pm .0005$	$\pm .0127$	SCALE	MATERIAL	
REVISION				BY & DATE	SCALE		3=8	CAST IRON	
THIS DRAWING IN DESIGN AND DETAIL IS OUR PROPERTY AND MUST NOT BE USED EXCEPT IN CONNECTION WITH OUR WORK ALL RIGHTS OF DESIGN AND INVENTION ARE RESERVED THIS IS AN ELECTRONICALLY GENERATED DOCUMENT - DO NOT SCALE THIS PRINT				FRACTIONS	$\pm 1/64$	REF.	FINISH	REV.	DRAWING NO.
				ANGLES	$\pm 1/2^\circ$	FMF	HEBEI	01	169561-60

005010-01

VIEW FROM OUTSIDE OF MOTOR AT SWITCH END.



VOLTAGE	L1	L2	L3	JOIN & INSULATE
HIGH	T1	T2	T3	(T4,T7) (T5,T8) (T6,T9)
LOW	T1,T7	T2,T8	T3,T9	T4,T5,T6

				TOLERANCES UNLESS SPECIFIED		 Regal Beloit America, Inc.			DRAWN RDW 04/12/02	
				DEC.	INCHES				CHK	
				.X	±.1				APPD	
				.XX	±.01				SCALE 1=1	
				.XXX	±.005	TITLE EXTERNAL WIRING DIAGRAM 3 PHASE W/O PROTECTOR	REF FIG.2-51			
A	UPDATED TO REGAL LOGO	SAJ 06/26/15	AJY	.XXXX	±.0005		MAT'L DECAL - 004014	FMF		
NO.	REVISION	BY & DATE	CHK	ANG	±1/2"	FINISH	PREV			
THIS DRAWING IN DESIGN AND DETAIL IS OUR PROPERTY AND MUST NOT BE USED EXCEPT IN CONNECTION WITH OUR WORK ALL RIGHTS OF DESIGN AND INVENTION ARE RESERVED THIS IS AN ELECTRONICALLY GENERATED DOCUMENT - DO NOT SCALE THIS PRINT			RFP 04/12/02		CAD FILE 00501001		SIZE	DRAWING NO.	REV.	
			DIST BRF-NLV			A	005010-01	A		



**1051 CHEYENNE AVE.
GRAFTON, WI 53024
PH. 262-377-8810**

CATALOG #: 170166.60

CONN. DIAGRAM: 005010.01

OUTLINE: 169561.60

MOUNTING: F1/F2 CAPABLE

WINDING #: T10702021 1

TYPICAL MOTOR PERFORMANCE DATA

HP	kW	SYNC. RPM	F.L. RPM	FRAME	ENCLOSURE	KVA CODE	DESIGN
7 1/2&5	5.60&3.70	3600	3539&2950	213TC	TEFC	H	B

PH	Hz	VOLTS	AMPS	START TYPE	DUTY	INSL	S.F.	AMB°C
3	60/50	208-230/460&190/380	20-18.3/9.2&14.4/7.2	LINE OR INVERTER	CONTINUOUS	F5	1.15/1.15	40

FULL LOAD EFF:	91&90.2	3/4 LOAD EFF:	91	1/2 LOAD EFF:	88.5	GTD. EFF		ELEC. TYPE
FULL LOAD PF:	85.5&86.7	3/4 LOAD PF:	83	1/2 LOAD PF:	75	-		SQ CAGE INV RATED

F.L. TORQUE	LOCKED ROTOR AMPS	L.R. TORQUE	B.D. TORQUE	F.L. RISE°C
11.24 LB-FT	132 / 66	23.3 LB-FT 209 %	34 LB-FT 305 %	30

SOUND PRESSURE @ 3 FT.	SOUND POWER	ROTOR WK^2	MAX. WK^2	SAFE STALL TIME	STARTS / HOUR	APPROX. MOTOR WGT
- dBA	- dBA	0.378 LB-FT^2	0.4 LB-FT^2	- SEC.	-	0 LBS.

***** SUPPLEMENTAL INFORMATION *****

DE BRACKET TYPE	ODE BRACKET TYPE	MOUNT TYPE	ORIENTATION	SEVERE DUTY	HAZARDOUS LOCATION	DRIP COVER	SCREENS	PAINT
C-FACE	STANDARD	RIGID	HORIZONTAL	FALSE	NONE	FALSE	NONE	GREEN - LEESON WATTSaver

BEARINGS		GREASE	SHAFT TYPE	SPECIAL DE	SPECIAL ODE	SHAFT MATERIAL	FRAME MATERIAL
DE	ODE						
BALL	BALL	POLYREX EM	T	NONE	NONE	AISI 1045 (C-240)	CAST IRON
6308	6306						

THERMO-PROTECTORS				THERMISTORS	CONTROL	SPACE HEATERS
THERMOSTATS	PROTECTORS	WDG RTDs	BRG RTDs			
TSTATS (N/C)	NOT	NONE	NONE	NONE	FALSE	NONE VOLTS

*

N

O

T

E

S

INVERTER TORQUE: CONSTANT 10:1
INV. HP SPEED RANGE: 1.5 X BASE SPEED

ENCODER: NONE
NONE NONE
NONE NONE PPR

BRAKE: NONE NONE
NONE P/N NONE
NONE NONE
FT-LB NONE V NONE Hz

Data Sheet

Date: 1/17/2018

170166.60



Data @ 460 V

Motor Load Data

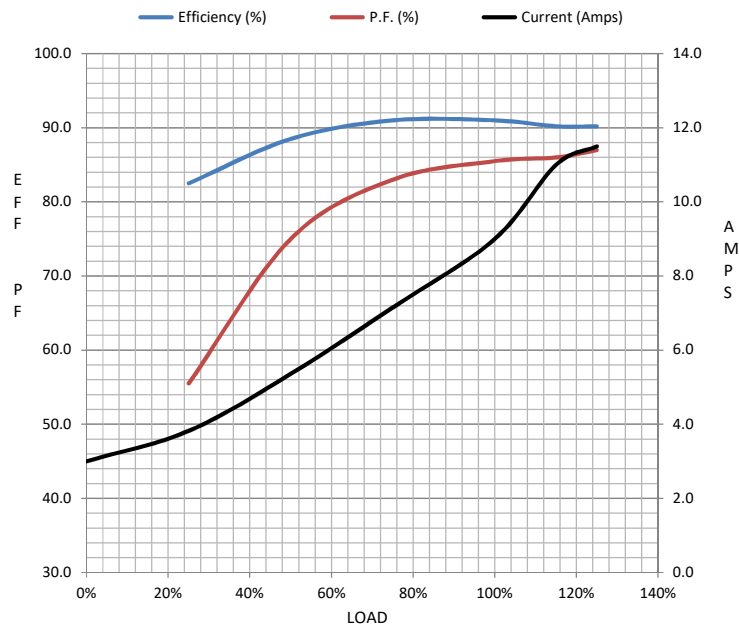
Load	0%	25%	50%	75%	100%	115%	125%	LR	
Current (Amps)	3.0	3.8	5.4	7.2	9.0	11.0	11.5	66.0	
Torque (ft-lb)	0.00	2.78	5.6	8.4	11.2	12.3	14.1	23.3	
RPM	3600	3586	3571	3555	3539	3,535	3522	0	
Efficiency (%)		82.5	88.5	91.0	91.0	90.2	90.2		
P.F. (%)	9.1	55.5	75.0	83.0	85.5	86.0	87.0	0.0	

Motor Speed Data

	LR	Pull-Up	BD	Rated	Idle
Speed (RPM)	0	1800	3312	3539	3600
Current (Amps)	66.0	60.7	39.6	9.0	3.0
Torque (ft-lb)	23.3	25.2	34.0	11.2	0.00

Information Block

HP	7.5			
Sync. RPM	3600			
Frame	213			
Enclosure	TEFC			
Construction	TFC			
Voltage	208-230/460#190/380	V		
Frequency	60	Hz		
Design	A			
LR Code letter	H			
Service Factor	1.15			
Temp Rise @ FL	30	° C		
Duty	CONT			
Ambient	40	° C		
Elevation	1,000	feet		
Rotor/Shaft wk ²	0.38	Lb-Ft ²		
Ref Wdg	T10702021	NONE		
Sound Pressure @ 1M	999	dBA		
VFD Rating	CONSTANT 10:1			
Outline Dwg	169561.60			
Conn. Diag	005010.01			
Additional Specifications:				
0				
0				
EQUIV CKT (OHMS / PHASE)				
R1	R2	X1	X2	Xm
0.0000	0.0000	0.0000	0.0000	0.0000



Speed - Torque Curve

