

PRODUCT INFORMATION PACKET



Model No: 170157.60

Catalog No: 170157.60

WATTSaver® General Purpose Motor, 7.50 & 5 HP, 3 Ph, 60 & 50 Hz, 208-230/460 & 190/380 V,
1800 & 1500 RPM, 213T Frame, TEFC



Regal and Leeson are trademarks of Regal Rexnord Corporation or one of its affiliated companies.

©2023 Regal Rexnord Corporation, All Rights Reserved. MC017097E



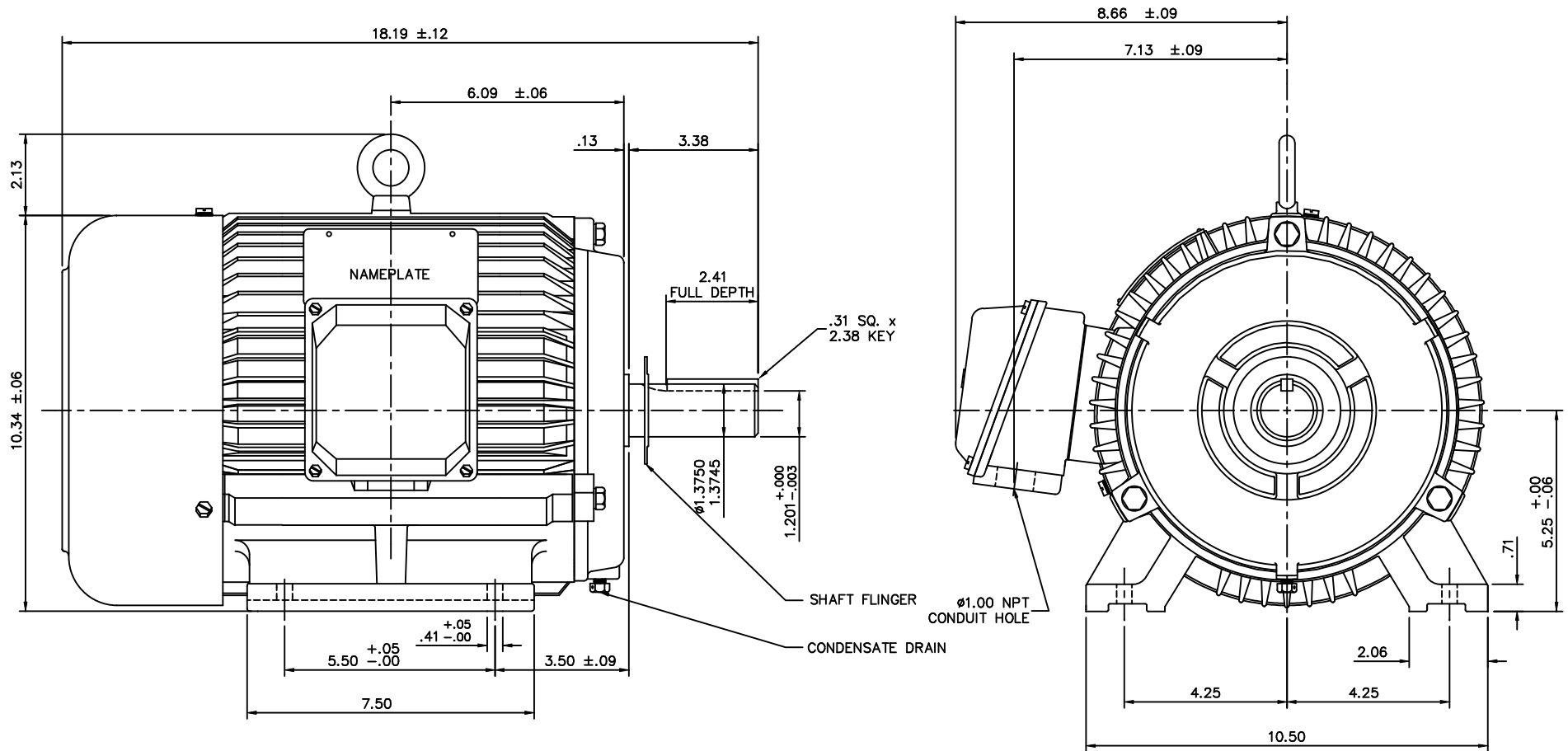


Nameplate Specifications

Phase	3	Output HP	7.50 & 5 Hp
Output KW	5.6 & 3.7 kW	Voltage	208-230/460 & 190/380 V
Speed	1770 & 1475 rpm	Service Factor	1.15 & 1.15
Frame	213T	Enclosure	Totally Enclosed Fan Cooled
Thermal Protection	No Protection	Efficiency	91.7 & 91 %
Ambient Temperature	40 °C	Frequency	60 & 50 Hz
Current	20-18.6/9.3 & 16/8 A	Power Factor	82.3
Duty	Continuous	Insulation Class	F
Design Code	B	KVA Code	J
Drive End Bearing Size	6308	Opp Drive End Bearing Size	6306
UL	Recognized	CSA	Y
CE	N	IP Code	43
Number of Speeds	1		

Technical Specifications

Electrical Type	Squirrel Cage Inverter Rated	Starting Method	Line Or Inverter
Poles	4	Rotation	Reversible
Resistance Main	1.161 Ohms	Mounting	Rigid Base
Motor Orientation	Horizontal	Drive End Bearing	Ball
Opp Drive End Bearing	Ball	Frame Material	Cast Iron
Shaft Type	T	Overall Length	18.19 in
Shaft Diameter	1.375 in	Shaft Extension	3.38 in
Assembly/Box Mounting	F1 ONLY		
Connection Drawing	005010.01	Outline Drawing	16953560



				TOLERANCES UNLESS OTHERWISE SPECIFIED			LEESON ELECTRIC CORPORATION		
				DEC.	INCHES	METRIC			
				.X	$\pm .1$	± 2.5	DRAWN	JJK 03/25/99	TITLE
				.XX	$\pm .03$	$\pm .75$	APPR.	PG 03/31/99	OUTLINE - 213T FRAME
01	REDRAWN TO CURRENT CAD STANDARDS	CJK 9/17/01		.XXX	$\pm .005$	$\pm .127$	R.F.P.		TEFC - RIGID MOUNT, NEW CON-BOX
NO.	REVISION	BY & DATE	CHK'D.	.XXXX	$\pm .0005$	$\pm .0127$	SCALE	3=8	MAT'L. CAST IRON
THIS DRAWING IN DESIGN AND DETAIL IS OUR PROPERTY AND MUST NOT BE USED EXCEPT IN CONNECTION WITH OUR WORK ALL RIGHTS OF DESIGN AND INVENTION ARE RESERVED THIS IS AN ELECTRONICALLY GENERATED DOCUMENT - DO NOT SCALE THIS PRINT				FRACTIONS	$\pm 1/64$	REF.	169501	FINISH	REV.
				ANGLES	$\pm 1/2^\circ$	FMF		HEBEI	01
							DRAWING NO. 169535-60		

005010-01

VIEW FROM OUTSIDE OF MOTOR AT SWITCH END.



				TOLERANCES UNLESS SPECIFIED		 Regal Beloit America, Inc.	DRAWN RDW 04/12/02	
				DEC.	INCHES		CHK	
				.X	±.1		APPD	
				.XX	±.01		SCALE 1=1	
				.XXX	±.005	TITLE EXTERNAL WIRING DIAGRAM 3 PHASE W/O PROTECTOR	REF FIG.2-51	
A	UPDATED TO REGAL LOGO	SAJ 06/26/15	AJY	.XXXX	±.0005		FMF	
NO.	REVISION	BY & DATE	CHK	ANG	±1/2"	FINISH	PREV	
THIS DRAWING IN DESIGN AND DETAIL IS OUR PROPERTY AND MUST NOT BE USED EXCEPT IN CONNECTION WITH OUR WORK ALL RIGHTS OF DESIGN AND INVENTION ARE RESERVED THIS IS AN ELECTRONICALLY GENERATED DOCUMENT - DO NOT SCALE THIS PRINT				RFP	04/12/02	CAD FILE	00501001	SIZE A
				DIST	BRF-NLV	DRAWING NO.		005010-01
						REV.		A



CERTIFICATION DATA SHEET

**1051 CHEYENNE AVE.
GRAFTON, WI 53024
PH. 262-377-8810**

CATALOG #: 170157.60

CONN. DIAGRAM: 005010.01

OUTLINE: 16953560

MOUNTING: F1 ONLY

WINDING #: T10704023 3

TYPICAL MOTOR PERFORMANCE DATA

HP	kW	SYNC. RPM	F.L. RPM	FRAME	ENCLOSURE	KVA CODE	DESIGN
7 1/2&5	5.60&3.70	1800	1770&1475	213T	TEFC	J	B

PH	Hz	VOLTS	AMPS	START TYPE	DUTY	INSL	S.F.	AMB°C
3	60/50	208-230/460&190/380	20-18.6/9.4&16/8	LINE OR INVERTER	CONTINUOUS	F5	1.15/1.15	40

FULL LOAD EFF:	91.7&91	3/4 LOAD EFF:	91.7	1/2 LOAD EFF:	90.2	GTD. EFF		ELEC. TYPE
FULL LOAD PF:	82.3&78.5	3/4 LOAD PF:	76.5	1/2 LOAD PF:	65.2	91		SQ CAGE INV RATED

F.L. TORQUE	LOCKED ROTOR AMPS	L.R. TORQUE	B.D. TORQUE	F.L. RISE°C
22.5 LB-FT	149 / 74.5	49.5 LB-FT 220 %	81 LB-FT 360 %	45

SOUND PRESSURE @ 3 FT.	SOUND POWER	ROTOR WK^2	MAX. WK^2	SAFE STALL TIME	STARTS / HOUR	APPROX. MOTOR WGT
67 dBA	77 dBA	0.89 LB-FT^2	0.9 LB-FT^2	15 SEC.	2	165 LBS.

*** SUPPLEMENTAL INFORMATION ***

DE BRACKET TYPE	ODE BRACKET TYPE	MOUNT TYPE	ORIENTATION	SEVERE DUTY	HAZARDOUS LOCATION	DRIP COVER	SCREENS	PAINT
STANDARD	STANDARD	RIGID	HORIZONTAL	FALSE	NONE	FALSE	NONE	BLUE (ENAMEL)

BEARINGS		GREASE	SHAFT TYPE	SPECIAL DE	SPECIAL ODE	SHAFT MATERIAL	FRAME MATERIAL
DE	ODE						
BALL	BALL	POLYREX EM	T	NONE	NONE	1045 HOT ROLLED (C-204)	CAST IRON
6308	6306						

THERMO-PROTECTORS				THERMISTORS	CONTROL	SPACE HEATERS
THERMOSTATS	PROTECTORS	WDG RTDs	BRG RTDs			
NONE	NOT	NONE	NONE	NONE	FALSE	NONE VOLTS

*

N

O

T

E

S

INVERTER TORQUE: CONSTANT 10:1

INV. HP SPEED RANGE: NONE

ENCODER: NONE

NONE NONE

NONE NONE PPR

BRAKE: NONE NONE

NONE P/N NONE

NONE NONE

NONE FT-LB NONE V NONE Hz

*

PREPARED BY: Radha Saikrishna Tanikella

DATE: 08/06/2018 12:42:25 AM

FORM 3531 REV.3 02/07/99

** Subject to change without notice.

Data Sheet

Date: 1/22/2018

170157.60



Data @ 460 V

Motor Load Data

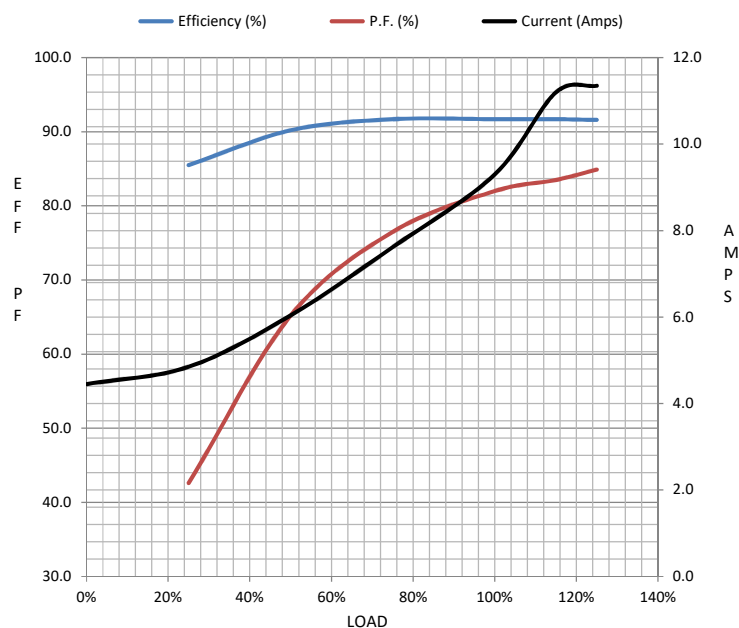
Load	0%	25%	50%	75%	100%	115%	125%	LR	
Current (Amps)	4.5	4.9	6.0	7.6	9.3	11.2	11.4	74.5	
Torque (ft-lb)	0.00	5.5	11.2	16.8	22.5	25.9	28.1	49.5	
RPM	1800	1793	1786	1778	1770	1765	1761	0	
Efficiency (%)		85.5	90.2	91.7	91.7	91.7	91.6		
P.F. (%)	5.8	42.6	65.2	76.5	82.0	83.5	84.9	35.0	

Motor Speed Data

	LR	Pull-Up	BD	Rated	Idle
Speed (RPM)	0	900	1550	1770	1800
Current (Amps)	74.5	71.0	48.5	9.3	4.5
Torque (ft-lb)	49.5	42.0	81.0	22.5	0.00

Information Block

HP	7.5			
Sync. RPM	1800			
Frame	213			
Enclosure	TEFC			
Construction	TFC			
Voltage	208-230/460#190/380	V		
Frequency	60	Hz		
Design	A			
LR Code letter	J			
Service Factor	1.15			
Temp Rise @ FL	35	° C		
Duty	CONT			
Ambient	40	° C		
Elevation	1,000	feet		
Rotor/Shaft wk²	0.89	Lb-Ft²		
Ref Wdg	T10704023 NONE			
Sound Pressure @ 1M	67	dBA		
VFD Rating	CONSTANT 10:1			
Outline Dwg	16953560			
Conn. Diag	005010.01			
Additional Specifications:				
0				
0				
EQUIV CKT (OHMS / PHASE)				
R1	R2	X1	X2	Xm
0.0000	0.0000	0.0000	0.0000	0.0000



Speed - Torque Curve

