

PRODUCT INFORMATION PACKET



Model No: 170155.00

Catalog No: 170155.00

General Purpose Motor, 125 & 100 HP, 3 Ph, 60 & 50 Hz, 208-230/460 & 190/380 V, 1800 & 1500 RPM,
405T Frame, DP



Regal and Leeson are trademarks of Regal Rexnord Corporation or one of its affiliated companies.

©2023 Regal Rexnord Corporation, All Rights Reserved. MC017097E



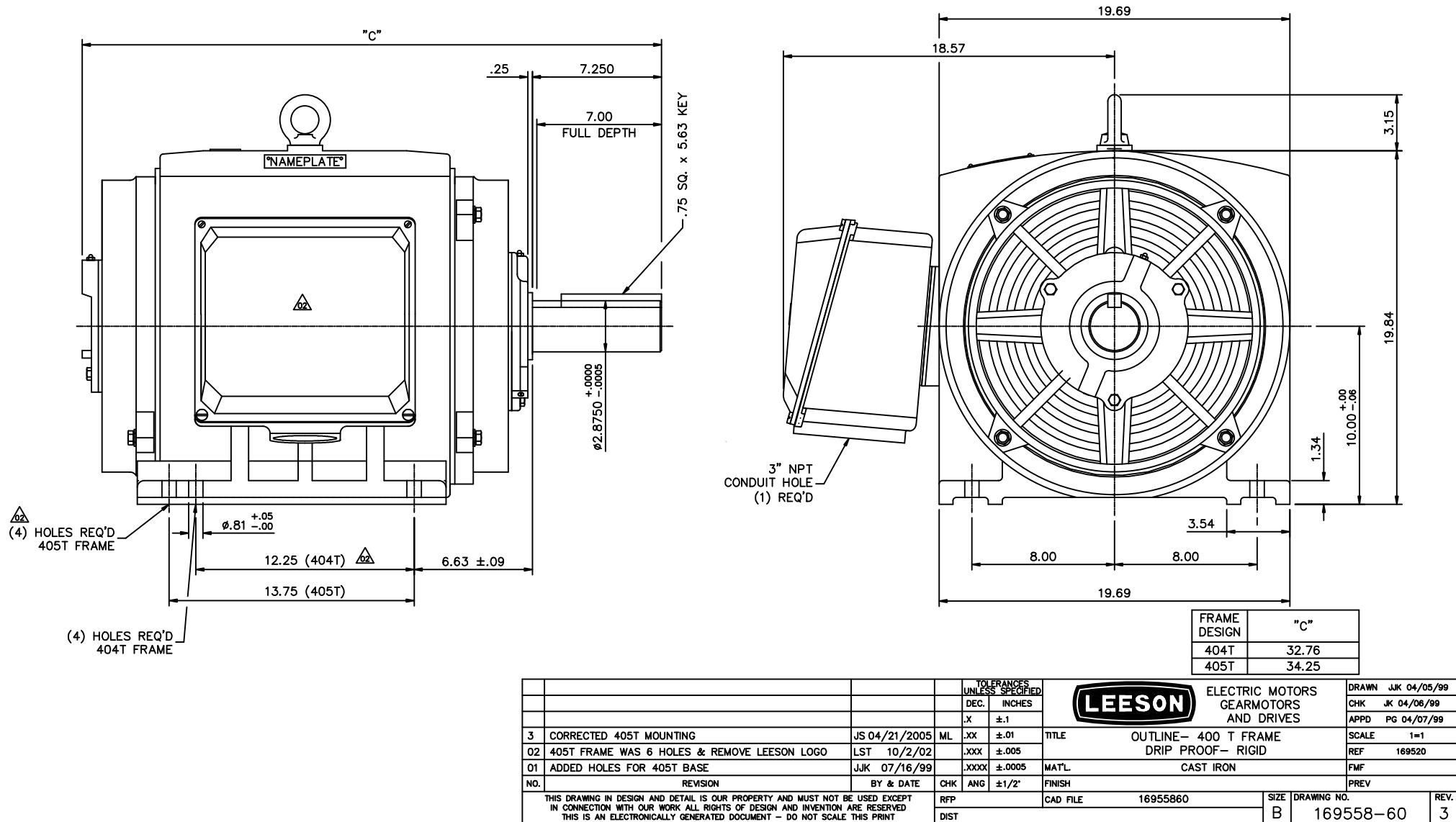


Nameplate Specifications

| | | | |
|------------------------|-------------------------|----------------------------|-------------------------|
| Phase | 3 | Output HP | 125 & 100 Hp |
| Output KW | 93.0 & 75.0 kW | Voltage | 208-230/460 & 190/380 V |
| Speed | 1785 & 1485 rpm | Service Factor | 1.15 & 1.15 |
| Frame | 405T | Enclosure | Drip Proof |
| Thermal Protection | No Protection | Efficiency | 95.4 % |
| Ambient Temperature | 40 °C | Frequency | 60 & 50 Hz |
| Current | 298-280/140 & 258/129 A | Power Factor | 87.7 |
| Duty | Continuous | Insulation Class | F |
| Design Code | A | KVA Code | G |
| Drive End Bearing Size | 6316 | Opp Drive End Bearing Size | 6314 |
| UL | Recognized | CSA | Y |
| CE | Y | IP Code | 22 |
| Number of Speeds | 1 | | |

Technical Specifications

| | | | |
|-----------------------|------------------------------|-------------------|---------------------------------|
| Electrical Type | Squirrel Cage Inverter Rated | Starting Method | Wye Start Delta Run Or Inverter |
| Poles | 4 | Rotation | Reversible |
| Resistance Main | .054 Ohms | Mounting | Rigid Base |
| Motor Orientation | Horizontal | Drive End Bearing | Ball |
| Opp Drive End Bearing | Ball | Frame Material | Cast Iron |
| Shaft Type | T | Overall Length | 34.25 in |
| Shaft Diameter | 2.875 in | Shaft Extension | 7.25 in |
| Assembly/Box Mounting | F1 Only | | |
| Connection Drawing | 004172.01 | Outline Drawing | 16955860 |



WYE - DELTA STARTING USEABLE ON 2,4 AND 6 POLE MOTORS.

LOW VOLTAGE CONNECTION

HIGH VOLTAGE CONNECTION



REFER TO THE WYE-DELTA STARTER CONNECTION INSTRUCTIONS FOR PROPER CONNECTION OF POWER LINES TO STARTER.

PART WINDING START USABLE ON 4 & 6 POLE MOTORS
LOW VOLTAGE CONNECTION ONLY

REFER TO THE PART WINDING STARTER INSTRUCTIONS FOR PROPER CONNECTION OF POWER LINES TO STARTER.

REFER TO THE CUTLER - HAMMER OR EQUIV. FOR PROPER SELECTION OF OVERLOAD HEATER COILS.

LINE LEADS



ROTATION CAN BE REVERSED BY INTERCHANGING ANY TWO LINE LEADS
● RED LEADS OR P1, P2, FOR N/C THERMOSTAT

ACROSS THE LINE START & RUN

| | LINE 1 | LINE 2 | LINE 3 | JOIN & INSULATE SEPARATELY |
|-----------|-----------------|-----------------|-----------------|----------------------------|
| HIGH VOLT | T1,T12 | T2,T10 | T3,T11 | (T4,T7) (T5,T8) (T6,T9) |
| LOW VOLT | T1,T6 T7,T12 | T2,T4 T8,T10 | T3,T5 T9,T11 | |

TOLERANCES
UNLESS SPECIFIED

| DEC. | INCHES |
|------|--------|
| .X | ±.1 |



ELECTRIC MOTORS
GEARMOTORS
AND DRIVES

DRAWN WLW 09/08/77
CHK RPB 09/12/77
APPD JCW 09/12/77

| | | | | |
|-----|---|--------------|-------|-----------|
| 03 | REV'D LOW VOLTAGE CONN. LEADS PER ELEC. | BJB 06/07/00 | .XX | ±.01 |
| 02 | ADDED T-STAT. NOTES PER ELECTRICAL | KMM 06/02/98 | .XXX | ±.005 |
| 01 | REDRAWN TO CAD | DBT 06/02/97 | .XXXX | ±.0005 |
| NO. | REVISION | BY & DATE | CHK | ANG ±1/2" |

TITLE DELTA - WYE CONNECTION DIAGRAM

MAT'L.

FINISH

SCALE 1=1

REF

FMF

PREV

THIS DRAWING IN DESIGN AND DETAIL IS OUR PROPERTY AND MUST NOT BE USED EXCEPT IN CONNECTION WITH OUR WORK ALL RIGHTS OF DESIGN AND INVENTION ARE RESERVED THIS IS AN ELECTRONICALLY GENERATED DOCUMENT - DO NOT SCALE THIS PRINT

RFP

DIST

CAD FILE 00417201

SIZE

A

DRAWING NO.

004172-01

REV.

03