

PRODUCT INFORMATION PACKET



Model No: 170152.60

Catalog No: 170152.60

WATTSaver® General Purpose Motor, 100 & 75 HP, 3 Ph, 60 & 50 Hz, 208-230/460 & 190/380 V,
1800 & 1500 RPM, 404T Frame, DP



Regal and Leeson are trademarks of Regal Rexnord Corporation or one of its affiliated companies.

©2023 Regal Rexnord Corporation, All Rights Reserved. MC017097E



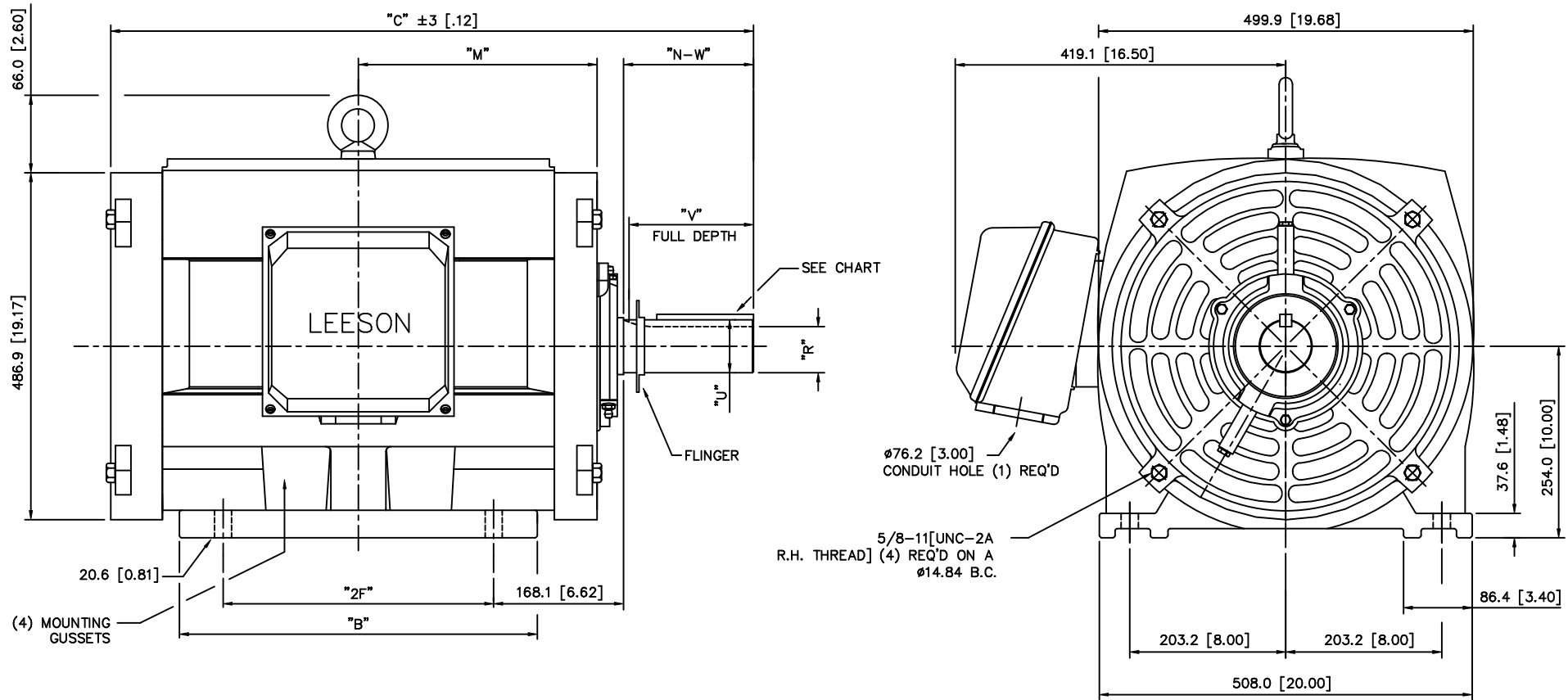


Nameplate Specifications

Phase	3	Output HP	100 & 75 Hp
Output KW	75.0 & 56.0 kW	Voltage	208-230/460 & 190/380 V
Speed	1780 & 1485 rpm	Service Factor	1.15 & 1.15
Frame	404T	Enclosure	Drip Proof
Thermal Protection	Thermostat	Efficiency	95.4 %
Ambient Temperature	40 °C	Frequency	60 & 50 Hz
Current	250-225/112.5 & 205/102.5 A	Power Factor	87.3
Duty	Continuous	Insulation Class	F
Design Code	B	KVA Code	G
Drive End Bearing Size	6316	Opp Drive End Bearing Size	6314
UL	Recognized	CSA	Y
CE	Y	IP Code	22
Number of Speeds	1		

Technical Specifications

Electrical Type	Squirrel Cage Inverter Rated	Starting Method	Wye Start Delta Run Or Inverter
Poles	4	Rotation	Reversible
Resistance Main	.053 Ohms	Mounting	Rigid Base
Motor Orientation	Horizontal	Drive End Bearing	Ball
Opp Drive End Bearing	Ball	Frame Material	Cast Iron
Shaft Type	T	Overall Length	36.42 in
Shaft Diameter	2.875 in	Shaft Extension	7.25 in
Assembly/Box Mounting	F1/F2 CAPABLE		
Connection Drawing	004172.01	Outline Drawing	16952060



FRAME	"2F"	"B"	"C"	"M"	"R"	"N-W"	"U"	"V"	"KEY"		
									WIDTH	THICK	LENGTH
404T	311.2 [12.25]	411.5 [16.20]	925.1 [36.42]	323.9 [12.75]	62.23 [2.450]	184.2 [7.25]	73.03 [2.875]	177.8 [7.00]	19.05 [0.750]	19.05 [0.750]	142.88 [5.625]
405TS	349.3 [13.75]	452.1 [17.80]	887.0 [34.92]	337.8 [13.30]	46.86 [1.845]	108.0 [4.25]	53.98 [2.125]	101.6 [4.00]	12.70 [0.500]	12.70 [0.500]	69.85 [2.750]
405T	349.3 [13.75]	452.1 [17.80]	962.9 [37.91]	337.8 [13.30]	62.23 [2.450]	184.2 [7.25]	73.03 [2.875]	177.8 [7.00]	19.05 [0.750]	19.05 [0.750]	142.88 [5.625]

				TOLERANCES UNLESS OTHERWISE SPECIFIED		LEESON ELECTRIC CORPORATION			
				DECIMALS					
				.00	± .01	DRAWN DBT 11/08/97	TITLE OUTLINE - 400 FRAME OPEN DRIP PROOF - RIGID		
				.000	± .005	CH'K'D.			
				.0000	± .0005	APPR.	MAT'L CAST IRON		
NO.				REVISION	BY	DATE			
THIS DRAWING IN DESIGN AND DETAIL IS OUR PROPERTY AND MUST NOT BE USED EXCEPT IN CONNECTION WITH OUR WORK ALL RIGHTS OF DESIGN AND INVENTION ARE RESERVED				FRACTIONS		SCALE 1=5	FINISH HEBEI		
				ANGLES		REF.			
				INCH/MM		FMF	SIZE B		
							DRAWING NO. 169520		

WYE - DELTA STARTING USEABLE ON 2,4 AND 6 POLE MOTORS.

LOW VOLTAGE CONNECTION

HIGH VOLTAGE CONNECTION



REFER TO THE WYE-DELTA STARTER CONNECTION INSTRUCTIONS FOR PROPER CONNECTION OF POWER LINES TO STARTER.

PART WINDING START USABLE ON 4 & 6 POLE MOTORS
LOW VOLTAGE CONNECTION ONLY

REFER TO THE PART WINDING STARTER INSTRUCTIONS FOR PROPER CONNECTION OF POWER LINES TO STARTER.

REFER TO THE CUTLER - HAMMER OR EQUIV. FOR PROPER SELECTION OF OVERLOAD HEATER COILS.

LINE LEADS



ACROSS THE LINE START & RUN

	LINE 1	LINE 2	LINE 3	JOIN & INSULATE SEPARATELY
HIGH VOLT	T1,T12	T2,T10	T3,T11	(T4,T7) (T5,T8) (T6,T9)
LOW VOLT	T1,T6 T7,T12	T2,T4 T8,T10	T3,T5 T9,T11	

TOLERANCES
UNLESS SPECIFIED

DEC. INCHES

.X ±.1

.XX ±.01

.XXX ±.005

.XXXX ±.0005

ANG ±1/2"



ELECTRIC MOTORS
GEARMOTORS
AND DRIVES

DRAWN WLW 09/08/77

CHK RPB 09/12/77

APPD JCW 09/12/77

SCALE 1=1

REF

FMF

PREV

NO.	REVISION	BY & DATE	CHK	ANG
03	REV'D LOW VOLTAGE CONN. LEADS PER ELEC.	BJB 06/07/00	.XX	±.01
02	ADDED T-STAT. NOTES PER ELECTRICAL	KMM 06/02/98	.XXX	±.005
01	REDRAWN TO CAD	DBT 06/02/97	.XXXX	±.0005

TITLE DELTA - WYE CONNECTION DIAGRAM

MAT'L.

FINISH

THIS DRAWING IN DESIGN AND DETAIL IS OUR PROPERTY AND MUST NOT BE USED EXCEPT IN CONNECTION WITH OUR WORK ALL RIGHTS OF DESIGN AND INVENTION ARE RESERVED THIS IS AN ELECTRONICALLY GENERATED DOCUMENT - DO NOT SCALE THIS PRINT

RFP

DIST

CAD FILE 00417201

SIZE

A

DRAWING NO.

004172-01

REV.

03

Data Sheet

Date: 1/30/2018

170152.60



Data @ 460 V

Motor Load Data

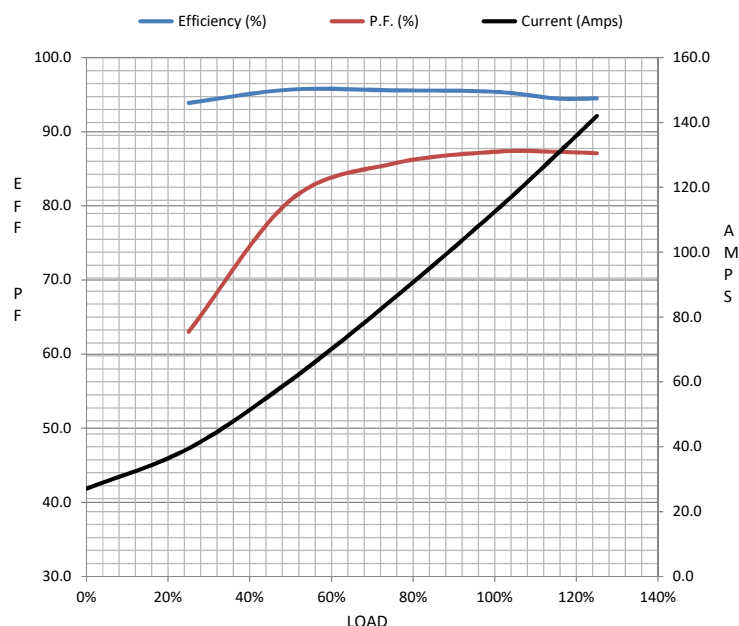
Load	0%	25%	50%	75%	100%	115%	125%	LR	
Current (Amps)	27.1	39.5	60.5	85.5	113	130	142	784	
Torque (ft-lb)	0.00	73.0	147	220	295	339	369	511	
RPM	1800	1795	1790	1787	1783	1780	1775	0	
Efficiency (%)		93.9	95.7	95.6	95.4	94.5	94.5		
P.F. (%)	4.5	63.0	80.8	85.7	87.3	87.3	87.1	0.0	

Motor Speed Data

	LR	Pull-Up	BD	Rated	Idle
Speed (RPM)	0	300	1715	1783	1800
Current (Amps)	784	756	426	113	27.1
Torque (ft-lb)	511	451	749	295	0.00

Information Block

HP	100.0			
Sync. RPM	1800			
Frame	404			
Enclosure	DP			
Construction	TDC			
Voltage	208-230/460#190/380	V		
Frequency	60	Hz		
Design	A			
LR Code letter	G			
Service Factor	1.15			
Temp Rise @ FL	42	° C		
Duty	CONT			
Ambient	40	° C		
Elevation	1,000	feet		
Rotor/Shaft wk²	0.00	Lb-Ft²		
Ref Wdg	T19604014	DR		
Sound Pressure @ 1M	78	dBA		
VFD Rating	CONSTANT 2:1			
Outline Dwg	16952060			
Conn. Diag	004172.01			
Additional Specifications:				
0				
0				
EQUIV CKT (OHMS / PHASE)				
R1	R2	X1	X2	Xm
0.0000	0.0000	0.0000	0.0000	0.0000



Speed - Torque Curve

