

PRODUCT INFORMATION PACKET



Model No: 170151.60

Catalog No: 170151.60

100 HP General Purpose Motor, 3 phase, 3600 RPM, 208-230/460 V, 365TS Frame, ODP
General Purpose Motors



Regal and Leeson are trademarks of Regal Rexnord Corporation or one of its affiliated companies.
©2021 Regal Rexnord Corporation, All Rights Reserved. MC017097E



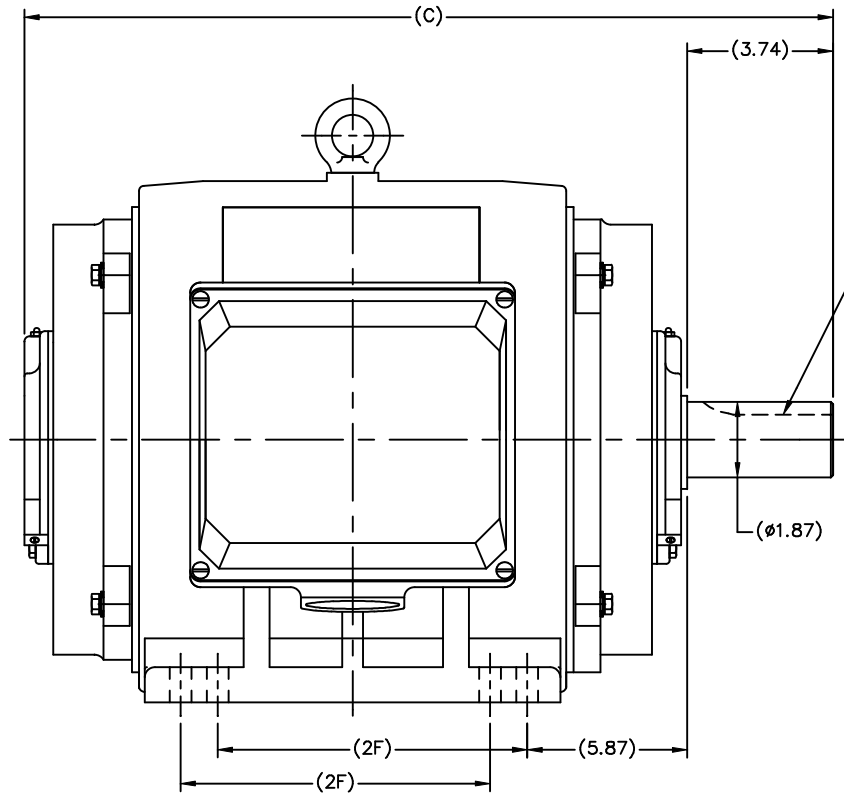


Nameplate Specifications

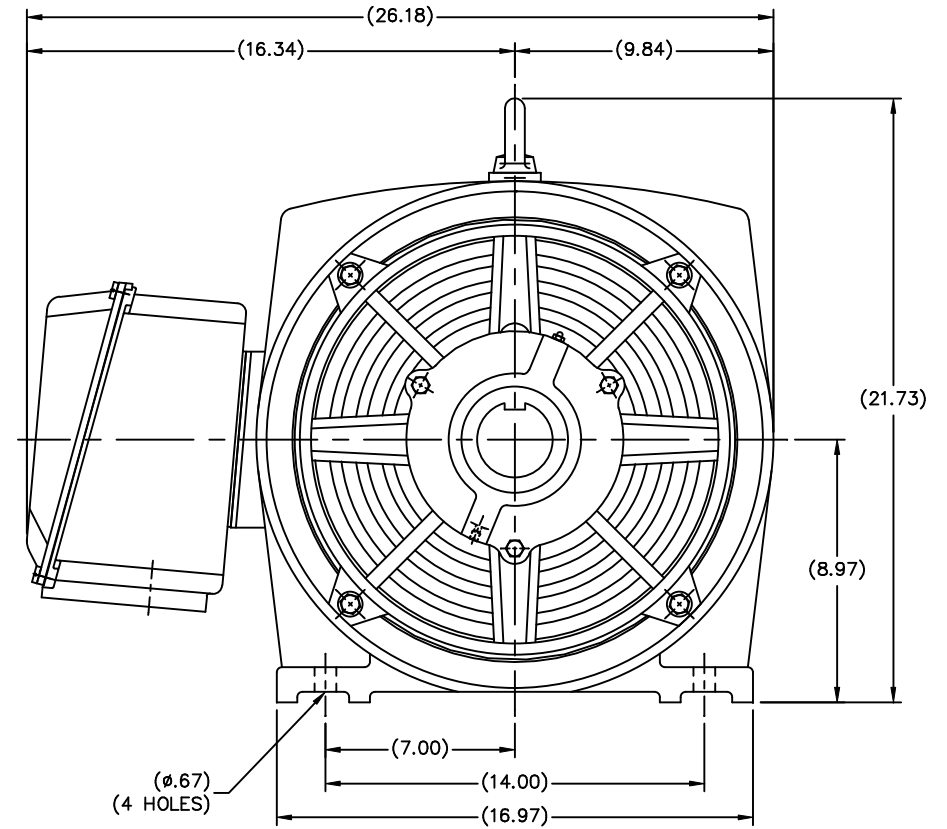
Output HP	100 Hp	Output KW	75.0 kW
Frequency	60 Hz	Voltage	208-230/460 V
Current	258.0-226.0/113.0 A	Speed	3565 rpm
Service Factor	1.15	Phase	3
Efficiency	94.5 %	Power Factor	85
Duty	Continuous	Insulation Class	F
Design Code	A	KVA Code	H
Frame	365TS	Enclosure	Drip Proof
Thermal Protection	No	Ambient Temperature	40 °C
Drive End Bearing Size	6314	Opp Drive End Bearing Size	6314
UL	Recognized	CSA	Y
CE	N	IP Code	22
Number of Speeds	1		

Technical Specifications

Electrical Type	Squirrel Cage Inverter Rated	Starting Method	Wye Start Delta Run Or Inverter
Poles	2	Rotation	Reversible
Resistance Main	0 Ohms	Mounting	Rigid Base
Motor Orientation	Horizontal	Drive End Bearing	Ball
Opp Drive End Bearing	Ball	Frame Material	Cast Iron
Shaft Type	TS	Overall Length	30.59 in
Shaft Diameter	1.875 in	Shaft Extension	3.75 in
Assembly/Box Mounting	F1 ONLY		
Connection Drawing	004172.01	Outline Drawing	SS622171LE

KEYWAY
(.50 WIDE)

(ø1.87)

(ø.67)
(4 HOLES)

DIMENSIONS IN TABLE ARE FOR REFERENCE

N364 ODP	29.41	11.26
N365 ODP	30.59	12.24
FRAME	C	2F

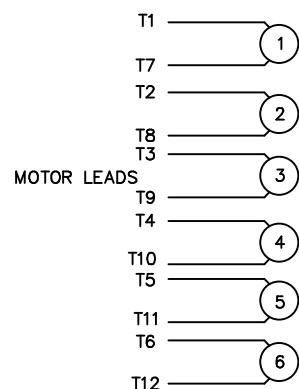
			TOLERANCES UNLESS SPECIFIED		LEESON	ELECTRIC MOTORS GEARMOTORS AND DRIVES	DRAWN MSG 11-21-2006		
			DEC.	INCHES			CHK	ML	11-21-2006
			.X	±.1			APPD	SB	11-22-2006
			.XX	±.03	TITLE OUTLINE 364TS/365TS FR. - ODP - 2 POLE			SCALE	7-32
			.XXX	±.005				REF	
			.XXXX	±.0005	MAT'L			FMF	HEBEI
NO.	REVISION	BY & DATE	CHK	ANG	±7'30"	FINISH	PREV		
THIS DRAWING IN DESIGN AND DETAIL IS OUR PROPERTY AND MUST NOT BE USED EXCEPT IN CONNECTION WITH OUR WORK ALL RIGHTS OF DESIGN AND INVENTION ARE RESERVED THIS IS AN ELECTRONICALLY GENERATED DOCUMENT - DO NOT SCALE THIS PRINT						CAD FILE SS622171LE	SIZE B	DRAWING NO.	PAGE OF
DIST CHA								SS622171LE	REV.

```
ERROR: syntaxerror  
OFFENDING COMMAND: --nostringval--
```

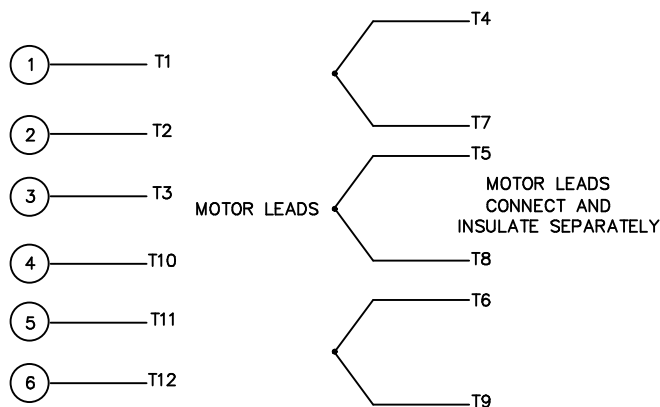
```
STACK:
```

```
/im  
-savelevel-
```

HIGH VOLTAGE CONNECTION



WYE-DELTA
STARTER
TERMINALS

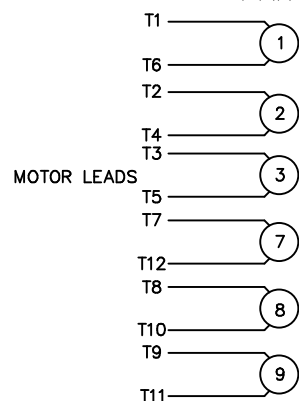
WYE-DELTA
STARTER
TERMINALS

MOTOR LEADS

MOTOR LEADS
CONNECT AND
INSULATE SEPARATELY

REFER TO THE WYE-DELTA STARTER CONNECTION INSTRUCTIONS FOR PROPER CONNECTION OF POWER LINES TO STARTER.

PART WINDING START USABLE ON 4 & 6 POLE MOTORS
LOW VOLTAGE CONNECTION ONLY



PART WINDING STARTER TERMINALS


REFER TO THE PART WINDING
STARTER INSTRUCTIONS FOR PROPER
CONNECTION OF POWER LINES TO STARTER.

REFER TO THE CUTLER - HAMMER OR EQUIV. FOR
PROPER SELECTION OF OVERLOAD HEATER COILS.

ROTATION CAN BE REVERSED BY
INTERCHANGING ANY TWO LINE LEADS
⊙ RED LEADS OR P1, P2, FOR N/C THERMOSTAT

ACROSS THE LINE START & RUN

	LINE 1	LINE 2	LINE 3	JOIN & INSULATE SEPARATELY
HIGH VOLT	T1,T12	T2,T10	T3,T11	(T4,T7) (T5,T8) (T6,T9)
LOW VOLT	T1,T6 T7,T12	T2,T4 T8,T10	T3,T5 T9,T11	

				TOLERANCES UNLESS SPECIFIED		 ELECTRIC MOTORS GEARMOTORS AND DRIVES		DRAWN WLW 09/08/77	
				DEC.	INCHES			CHK RPB 09/12/77	
				.X	±.1			APPD JCW 09/12/77	
03	REV'D LOW VOLTAGE CONN. LEADS PER ELEC.	BJB 06/07/00		.XX	±.01	TITLE DELTA – WYE CONNECTION DIAGRAM		SCALE 1=1	
02	ADDED T–STAT. NOTES PER ELECTRICAL	KMM 06/02/98		.XXX	±.005			REF	
01	REDRAWN TO CAD	DBT 06/02/97		.XXXX	±.0005	MAT'L.		FMF	
NO.	REVISION	BY & DATE	CHK	ANG	±1/2"	FINISH		PREV	
THIS DRAWING IN DESIGN AND DETAIL IS OUR PROPERTY AND MUST NOT BE USED EXCEPT IN CONNECTION WITH OUR WORK ALL RIGHTS OF DESIGN AND INVENTION ARE RESERVED THIS IS AN ELECTRONICALLY GENERATED DOCUMENT – DO NOT SCALE THIS PRINT			RFP		CAD FILE 00417201		SIZE	DRAWING NO.	REV.
			DIST				A	004172–01	03