

PRODUCT INFORMATION PACKET



Model No: 170119.00

Catalog No: 170119.00

SOLETE, REPLACED BY 286TTFC6030** 30 1800 575 TEFC 286T WATTSAVE/30 1800 575 TEFC 286T WATTSA'

General Purpose Motors



Regal and Leeson are trademarks of Regal Rexnord Corporation or one of its affiliated companies.

©2021 Regal Rexnord Corporation, All Rights Reserved. MC017097E





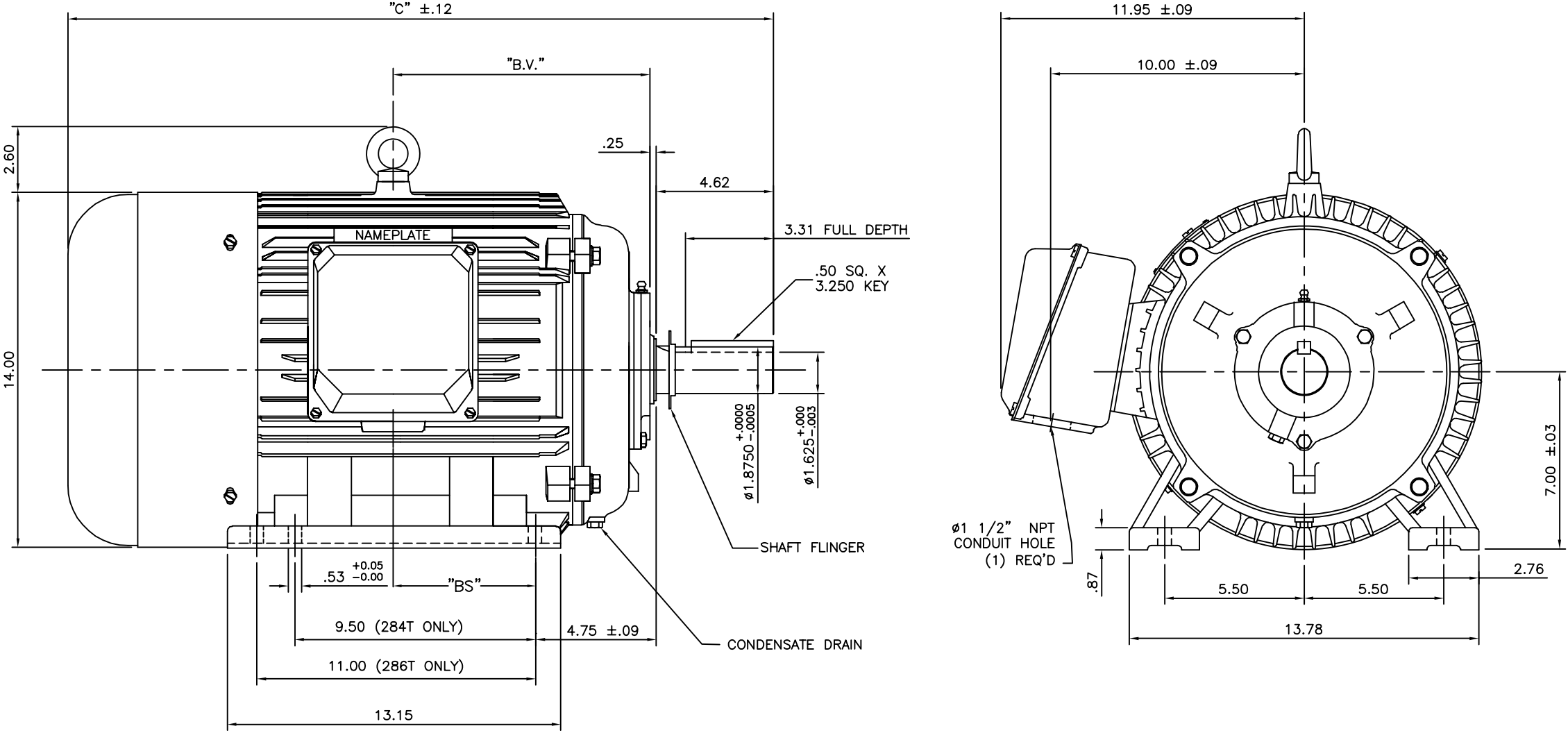
Nameplate Specifications

Output HP	30 Hp	Output KW	22.4 kW
Frequency	60 Hz	Voltage	575 V
Current	28.0 A	Speed	1780 rpm
Service Factor	1.15	Phase	3
Efficiency	94.1 %	Power Factor	85
Duty	Continuous	Insulation Class	F
Design Code	B	KVA Code	H
Frame	286T	Enclosure	Totally Enclosed Fan Cooled
Thermal Protection	No	Ambient Temperature	40 °C
Drive End Bearing Size	6311	Opp Drive End Bearing Size	6309
UL	Recognized	CSA	Y
CE	Y	IP Code	43
Number of Speeds	1		

Technical Specifications

Electrical Type	Squirrel Cage Induction Run	Starting Method	Wye Start Delta Run
Poles	4	Rotation	Reversible
Resistance Main	.052 Ohms	Mounting	Rigid Base
Motor Orientation	Horizontal	Drive End Bearing	Ball
Opp Drive End Bearing	Ball	Frame Material	Cast Iron
Shaft Type	T	Overall Length	27.83 in
Shaft Diameter	1.875 in	Shaft Extension	4.62 in
Assembly/Box Mounting	F1/F2 CAPABLE		
Connection Drawing	005190.01	Outline Drawing	16953960-286T

169539-60



NOTE: 286T HAS 6 MTG. HOLES, USING 284T AND 286T LOCATIONS

FRAME DESIGN	"C"	"BV"	"BS"
284T	26.26	9.65	
286T	27.83	10.43	5.51

		TOLERANCES UNLESS SPECIFIED		REGAL - BELOIT CORPORATION		DRAWN CJK 07/16/01	
		DEC.	INCHES			CHK	
		.X	±.1			APPD	
03	ECO-0048910, REVISED 'BA' DIM.	RFH 04/04/14	EH .XX	±.03	TITLE OUTLINE-280T FRAME, TEFC-RIGID NEW CONDUIT BOX	SCALE	N/A
02	REDRAWN TO CURRENT CAD STANDARDS	CJK 07/13/99	.XXX	±.005		REF	
01	ADDED HOLE FOR 286T BASE	JJK 11/01/01	.XXX	±.0005		FMF	
NO.	REVISION	BY & DATE	CHK	ANG	±1/2'	FINISH	PREV
THIS DRAWING IN DESIGN AND DETAIL IS OUR PROPERTY AND MUST NOT BE USED EXCEPT IN CONNECTION WITH OUR WORK ALL RIGHTS OF DESIGN AND INVENTION ARE RESERVED THIS IS AN ELECTRONICALLY GENERATED DOCUMENT - DO NOT SCALE THIS PRINT			RFP	CAD FILE		SIZE A	DRAWING NO. 169539-60
			DIST				PAGE 03



A diagram of a multi-ported device. On the left, there are six ports labeled 'C'. On the right, there are six pairs of ports labeled 'T1 U1', 'T2 V1', 'T3 W1', 'T4 U2', 'T5 V2', and 'T6 W2'. A curved line separates the 'C' ports from the 'T' and 'U/V/W' ports.



	L1	L2	L3	JOIN
START (WYE)	T1 U1	T2 V1	T3 U2	(T4,T5,T6) (U2,V2,W2)
RUN (DELTA)	(T1,T6) (U1,W2)	(T2,T4) (V1,U2)	(T3,T5) (W1,V2)	

				TOLERANCES UNLESS OTHERWISE SPECIFIED		LEESON ELECTRIC CORPORATION						
04	ADDED MAT'L (CWLE) PER ECO-0168542	DS	6/10/2019	DECIMALS		EXT. WIRING DIAGRAM STAR START – DELTA RUN Y-CONNECTED START (CWLE) DELTA CONNECTED RUN – SINGLE VOLTAGE						
03	ADDED IEC DESIGNATIONS	MOL	4/27/2012	.00	± .01					DRAWN PG 05/07/82	TITLE	
02	REMOVED OBSOLETE STATUS	KJH	6/28/99	.000	± .005					CH'K'D.	TEM	
01	REDRAWN ON CAD	DBT	05/30/97	.0000	± .0005					APPR.	05/07/82	
NO.	REVISION	BY	DATE	FRACTIONS	± 1/64					SCALE	1=1	
THIS DRAWING IN DESIGN AND DETAIL IS OUR PROPERTY AND MUST NOT BE USED EXCEPT IN CONNECTION WITH OUR WORK ALL RIGHTS OF DESIGN AND INVENTION ARE RESERVED				ANGLES	± 1/2°	REF.	T2E	FINISH	SIZE	DRAWING NO.		
				INCH/MM		FMF	ELECTRO POWER			A	005190-01	