

PRODUCT INFORMATION PACKET



Model No: 170098.00

Catalog No: 170098.00

General Purpose Motor, 60 & 50 HP, 3 Ph, 60 & 50 Hz, 208-230/460 & 190/380 V, 1200 & 1000 RPM,
404T Frame, TEFC



Regal and Leeson are trademarks of Regal Rexnord Corporation or one of its affiliated companies.

©2023 Regal Rexnord Corporation, All Rights Reserved. MC017097E





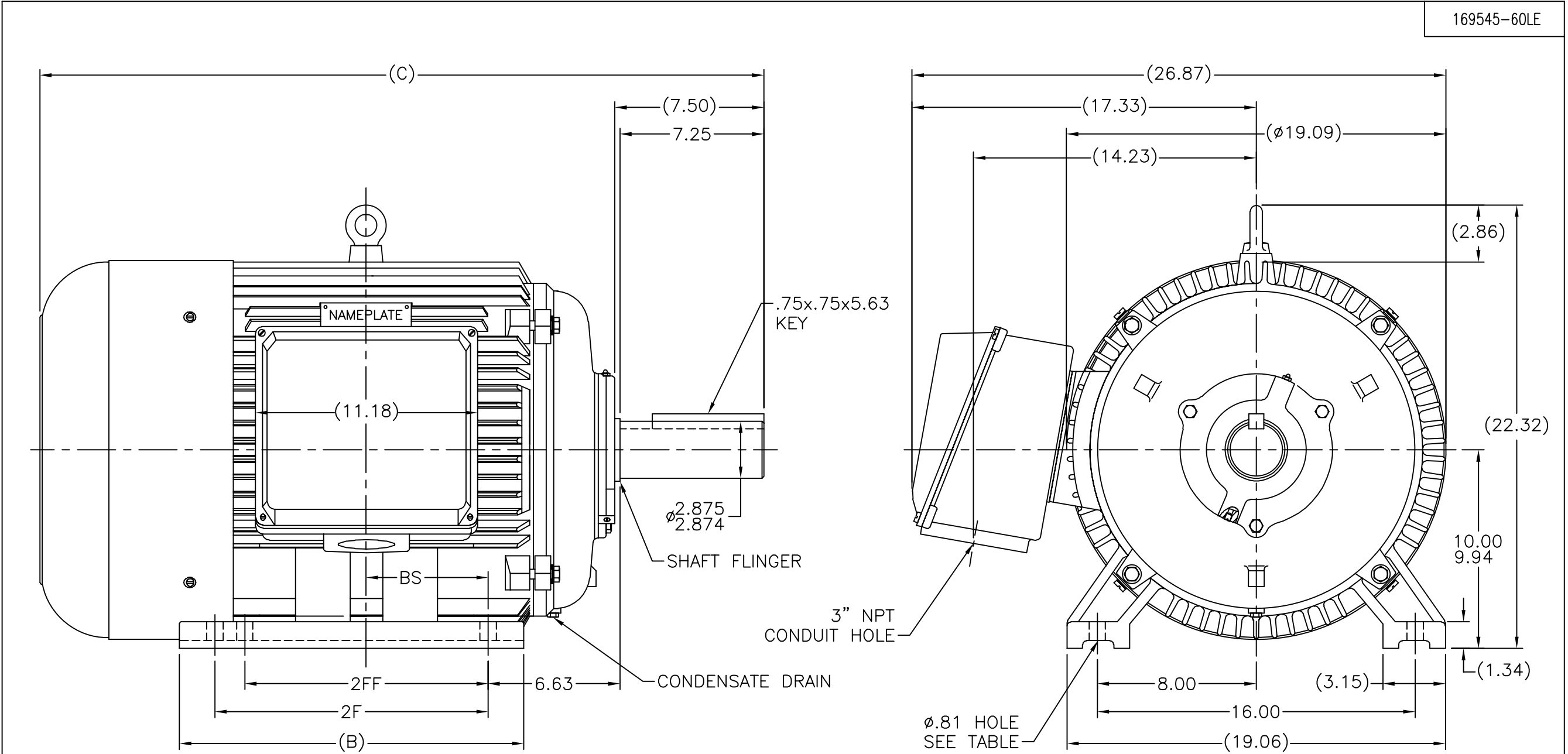
Nameplate Specifications

Phase	3	Output HP	60 & 50 Hp
Output KW	45.0 & 37.0 kW	Voltage	208-230/460 & 190/380 V
Speed	1190 & 990 rpm	Service Factor	1.15 & 1.15
Frame	404T	Enclosure	Totally Enclosed Fan Cooled
Thermal Protection	No Protection	Efficiency	94.5 & 94.1 %
Ambient Temperature	40 °C	Frequency	60 & 50 Hz
Current	154-142/71 & 140/70 A	Power Factor	83.4
Duty	Continuous	Insulation Class	F
Design Code	B	KVA Code	G
Drive End Bearing Size	6316	Opp Drive End Bearing Size	6314
UL	Recognized	CSA	Y
CE	Y	IP Code	43
Number of Speeds	1		


Technical Specifications

Electrical Type	Squirrel Cage Induction Run	Starting Method	Wye Start Delta Run
Poles	6	Rotation	Reversible
Mounting	Rigid Base	Motor Orientation	Horizontal
Drive End Bearing	Ball	Opp Drive End Bearing	Ball
Frame Material	Cast Iron	Shaft Type	T
Overall Length	36.42 in	Shaft Diameter	2.875 in
Shaft Extension	7.25 in	Assembly/Box Mounting	F1/F2 CAPABLE
Connection Drawing	004172.03	Outline Drawing	16954560le

This is an uncontrolled document once printed or downloaded and is subject to change without notice. Date Created:06/22/2023



169545-60LE

											TOLERANCES UNLESS SPECIFIED		 REGAL - BELOIT CORPORATION				DRAWN CTO 08/21/2002					
											DEC.	INCHES					CHK ML 08/29/2002					
											.X	±.1					APPD SB 08/30/2002					
								3	REVISED BS DIM. UPDATED TITLE BLOCK ECO--0048910							RFH 04/07/2014	EH	.XX	±.03	TITLE OUTLINE -- RIGID		
2	CORRECTED FOOT MOUNTING HOLES DISCRPTION							MOL 10/21/2011		.XXX	±.005	400T RF. -- TEFC				REF						
1	NEW DRAWING							CTO 06/30/2002	SB	.XXXX	±.0005	MAT'L.				FMF						
1681		404T	36.42	15.83	12.25	—	5.39	4	NO.	REVISION			BY & DATE	CHK	ANG	±7°30"	FINISH		PREV			
1831		405T	37.91	17.32	13.75	12.25	6.90	6	THIS DRAWING IN DESIGN AND DETAIL IS OUR PROPERTY AND MUST NOT BE USED EXCEPT IN CONNECTION WITH OUR WORK ALL RIGHTS OF DESIGN AND INVENTION ARE RESERVED THIS IS AN ELECTRONICALLY GENERATED DOCUMENT -- DO NOT SCALE THIS PRINT							RFP		CAD FILE 16954560le		SIZE	DRAWING NO. PAGE 1 OF 1	REV.
DASH		FRAME	C	B	2F	2FF	BS	HOLE QTY								DIST		A	169545--60LE		3	

WYE - DELTA STARTING USEABLE ON 2,4 AND 6 POLE MOTORS.

LOW VOLTAGE CONNECTION



HIGH VOLTAGE CONNECTION



REFER TO THE WYE-DELTA STARTER CONNECTION INSTRUCTIONS FOR PROPER CONNECTION OF POWER LINES TO STARTER.

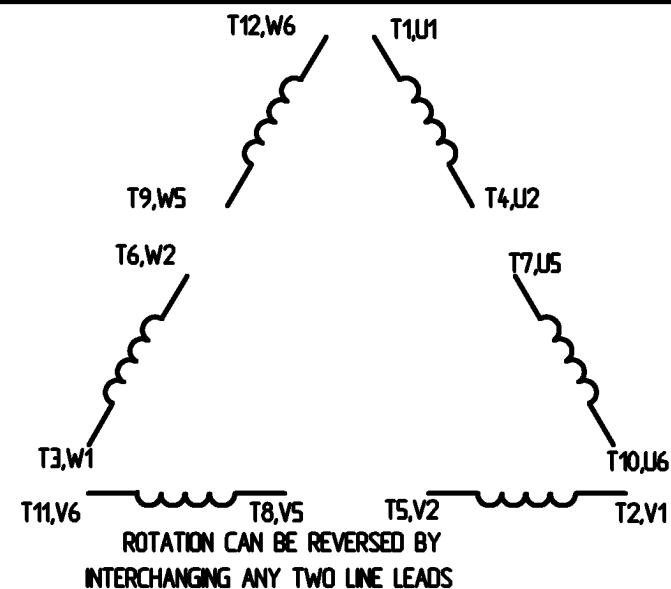
PART WINDING START USABLE ON 4 & 6 POLE MOTORS LOW VOLTAGE CONNECTION ONLY



REFER TO THE PART WINDING STARTER INSTRUCTIONS FOR PROPER CONNECTION OF POWER LINES TO STARTER.

REFER TO THE CUTLER - HAMMER OR EQUIV. FOR PROPER SELECTION OF OVERLOAD HEATER COILS.

LINE LEADS



12 LEAD DELTA CONNECTION ACROSS THE LINE START (FOR Y START DELTA RUN, REMOVE THE JUMPERS)

LOW VOLTAGE
(MUST BE REWIRED
AS SHOWN)

HIGH VOLTAGE
(FACTORY WIRED FOR HIGH
VOLTAGE AS SHOWN)



				TOLERANCES UNLESS SPECIFIED		<div>LEESON</div> <div>ELECTRIC MOTORS GEARMOTORS AND DRIVES</div>	DRAWN C/W 08/28/02	
				DEC.	INCHES		CHK	
				X	± .1		APPO	
				XX	± .01		SCALE	1:1
				XXX	± .005		REF	
				XXXX	± .0005		FMF	
NO.	REVISION	BY & DATE	CHK	ANG	± 1/2°	FINISH	PREV	
THIS DRAWING IN DESIGN AND DETAIL IS OUR PROPERTY AND MUST NOT BE USED EXCEPT IN CONNECTION WITH OUR WORK. ALL RIGHTS OF DESIGN AND INVENTION ARE RESERVED. THIS IS AN ELECTRONICALLY GENERATED DOCUMENT - DO NOT SCALE THIS PRINT.				REP		CAD FILE	00417203	SIZE A
				DST				DRAWING NO. 004172-03
								REV.

ERROR: syntaxerror
OFFENDING COMMAND: --nostringval--

STACK:

/CB
-dictionary-
/Pscript_WinNT_Compat
-dictionary-