

# PRODUCT INFORMATION PACKET



Model No: 170044.60

Catalog No: 170044.60

WATTSaver® General Purpose Motor, 75 & 60 HP, 3 Ph, 60 & 50 Hz, 208-230/460 & 190/380 V,  
3600 & 3000 RPM, 364TS Frame, DP



Regal and Leeson are trademarks of Regal Rexnord Corporation or one of its affiliated companies.

©2023 Regal Rexnord Corporation, All Rights Reserved. MC017097E





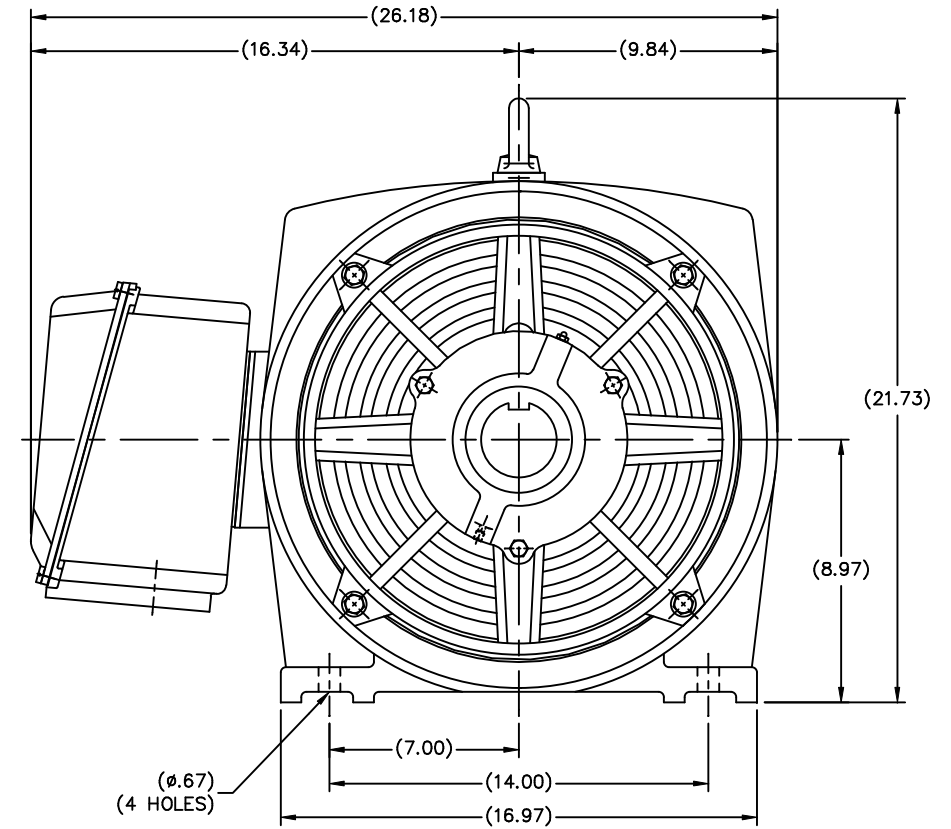
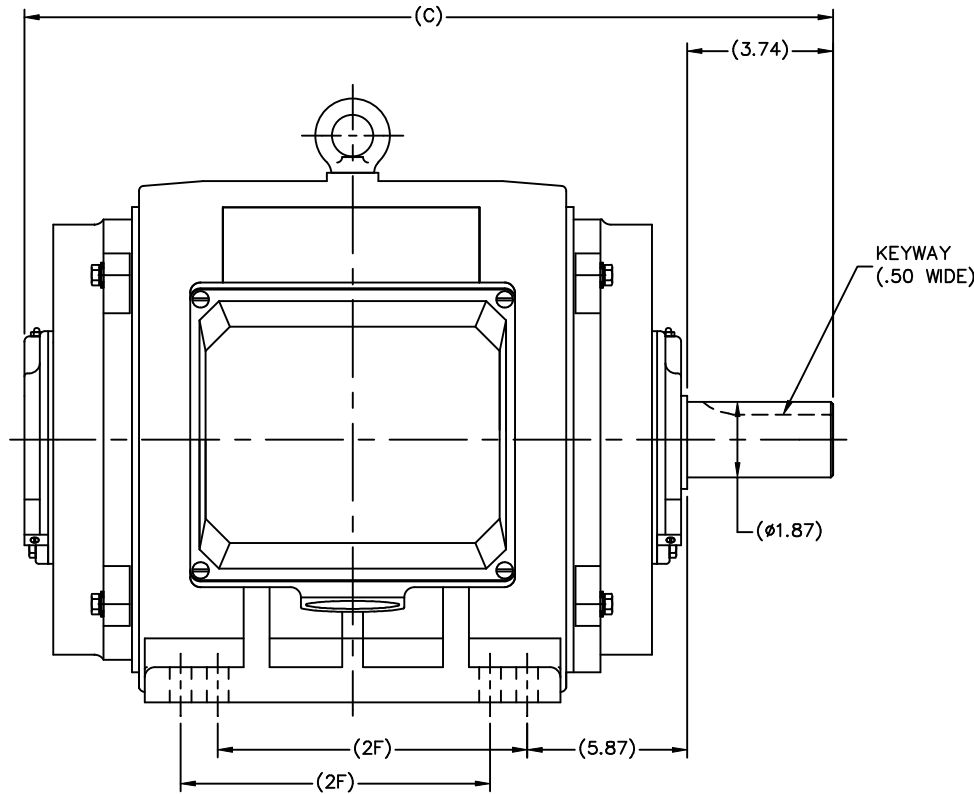
## Nameplate Specifications

Phase	3	Output HP	75 & 60 Hp
Output KW	56.0 & 45.0 kW	Voltage	208-230/460 & 190/380 V
Speed	3575 & 2965 rpm	Service Factor	1.15 & 1.15
Frame	364TS	Enclosure	Drip Proof
Thermal Protection	No Protection	Efficiency	93.6 & 93.6 %
Ambient Temperature	40 °C	Frequency	60 & 50 Hz
Current	190-170/85 & 163/81.5 A	Power Factor	88.5
Duty	Continuous	Insulation Class	F
Design Code	B	KVA Code	F
Drive End Bearing Size	6312	Opp Drive End Bearing Size	6312
UL	Recognized	CSA	Y
CE	N	IP Code	12
Number of Speeds	1		

## Technical Specifications

Electrical Type	Squirrel Cage Inverter Rated	Starting Method	Wye Start Delta Run Or Inverter
Poles	2	Rotation	Reversible
Mounting	Rigid Base	Motor Orientation	Horizontal
Drive End Bearing	Ball	Opp Drive End Bearing	Ball
Frame Material	Cast Iron	Shaft Type	TS
Overall Length	29.41 in	Shaft Diameter	1.875 in
Shaft Extension	3.75 in	Assembly/Box Mounting	F1/F2 CAPABLE
Connection Drawing	004172.01	Outline Drawing	SS622171LE

This is an uncontrolled document once printed or downloaded and is subject to change without notice. Date Created:06/21/2023



DIMENSIONS IN TABLE ARE FOR REFERENCE

N364 ODP	29.41	11.26
N365 ODP	30.59	12.24
FRAME	C	2F

			TOLERANCES UNLESS SPECIFIED		LEESON	ELECTRIC MOTORS GEARMOTORS AND DRIVES	DRAWN MSG 11-21-2006		
			DEC.	INCHES			CHK	ML	11-21-2006
			.X	$\pm .1$			APPD	SB	11-22-2006
			.XX	$\pm .03$	TITLE OUTLINE			SCALE	7-32
			.XXX	$\pm .005$	364TS/365TS FR. - ODP - 2 POLE			REF	
			.XXXX	$\pm .0005$	MAT'L			FMF	HEBEI
NO.	REVISION	BY & DATE	CHK	ANG	$\pm 7'30"$	FINISH	PREV		
THIS DRAWING IN DESIGN AND DETAIL IS OUR PROPERTY AND MUST NOT BE USED EXCEPT IN CONNECTION WITH OUR WORK ALL RIGHTS OF DESIGN AND INVENTION ARE RESERVED THIS IS AN ELECTRONICALLY GENERATED DOCUMENT - DO NOT SCALE THIS PRINT						CAD FILE SS622171LE	SIZE B	DRAWING NO.	PAGE OF
DIST CHA								SS622171LE	REV.

ERROR: syntaxerror  
OFFENDING COMMAND: --nostringval--

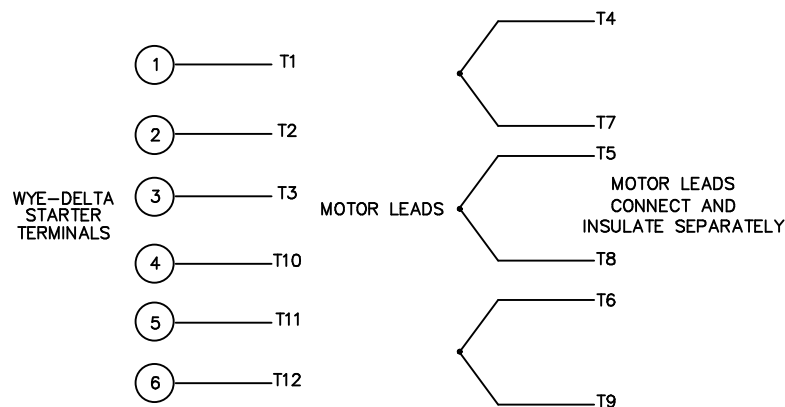
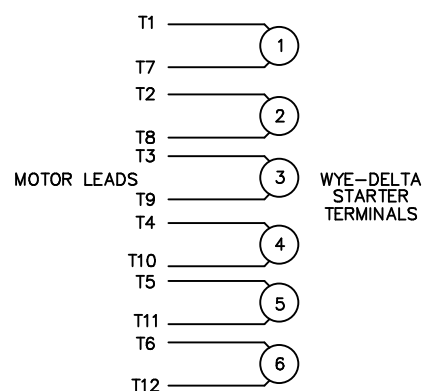
STACK:

/im  
-savelevel-

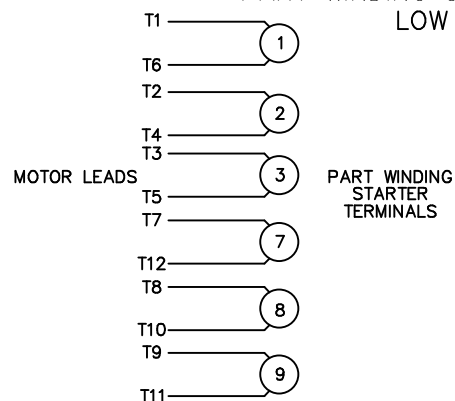
## WYE - DELTA STARTING USEABLE ON 2,4 AND 6 POLE MOTORS.

## LOW VOLTAGE CONNECTION

## HIGH VOLTAGE CONNECTION



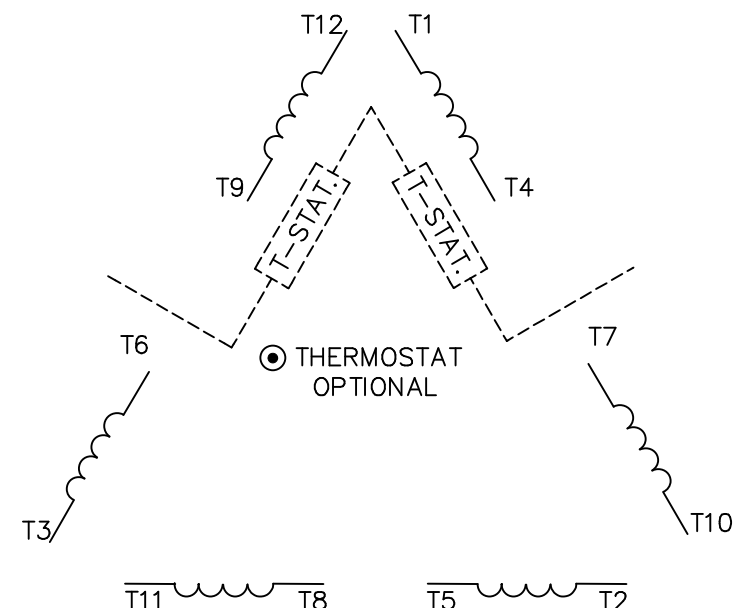
REFER TO THE WYE-DELTA STARTER CONNECTION INSTRUCTIONS FOR PROPER CONNECTION OF POWER LINES TO STARTER.

PART WINDING START USABLE ON 4 & 6 POLE MOTORS  
LOW VOLTAGE CONNECTION ONLY

REFER TO THE PART WINDING STARTER INSTRUCTIONS FOR PROPER CONNECTION OF POWER LINES TO STARTER.

REFER TO THE CUTLER - HAMMER OR EQUIV. FOR PROPER SELECTION OF OVERLOAD HEATER COILS.

## LINE LEADS



## ACROSS THE LINE START &amp; RUN

	LINE 1	LINE 2	LINE 3	JOIN & INSULATE SEPARATELY
HIGH VOLT	T1,T12	T2,T10	T3,T11	(T4,T7) (T5,T8) (T6,T9)
LOW VOLT	T1,T6 T7,T12	T2,T4 T8,T10	T3,T5 T9,T11	

TOLERANCES  
UNLESS SPECIFIED

DEC. INCHES

.X ±.1

.XX ±.01

.XXX ±.005

.XXXX ±.0005

ANG ±1/2"



ELECTRIC MOTORS  
GEARMOTORS  
AND DRIVES

DRAWN WLW 09/08/77

CHK RPB 09/12/77

APPD JCW 09/12/77

SCALE 1=1

REF

FMF

PREV

NO.	REVISION	BY & DATE	CHK	ANG
03	REV'D LOW VOLTAGE CONN. LEADS PER ELEC.	BJB 06/07/00	.XX	±.01
02	ADDED T-STAT. NOTES PER ELECTRICAL	KMM 06/02/98	.XXX	±.005
01	REDRAWN TO CAD	DBT 06/02/97	.XXXX	±.0005

TITLE DELTA - WYE CONNECTION DIAGRAM

MAT'L.

FINISH

THIS DRAWING IN DESIGN AND DETAIL IS OUR PROPERTY AND MUST NOT BE USED EXCEPT IN CONNECTION WITH OUR WORK ALL RIGHTS OF DESIGN AND INVENTION ARE RESERVED THIS IS AN ELECTRONICALLY GENERATED DOCUMENT - DO NOT SCALE THIS PRINT

RFP

DIST

CAD FILE 00417201

SIZE

A

DRAWING NO.

004172-01

REV.

03



**1051 CHEYENNE AVE.  
GRAFTON, WI 53024  
PH. 262-377-8810**

**CATALOG #:** 170044.60

**CONN. DIAGRAM:** 004172.01

**OUTLINE:** SS622171LE

**MOUNTING:** F1/F2 CAPABLE

**WINDING #:** T18302022 DR 1

**TYPICAL MOTOR PERFORMANCE DATA**

HP	kW	SYNC. RPM	F.L. RPM	FRAME	ENCLOSURE	KVA CODE	DESIGN
75&60	56.0&45.0	3600	3575&2965	364TS	DP	F	B

PH	Hz	VOLTS	AMPS	START TYPE	DUTY	INSL	S.F.	AMB°C
3	60/50	208-230/460&190/380	190-170/85&163/81.5	Y START D RUN OR INV	CONTINUOUS	F5	1.15/1.15	40

<b>FULL LOAD EFF:</b>	93.6&93.6	<b>3/4 LOAD EFF:</b>	93	<b>1/2 LOAD EFF:</b>	91.7	<b>GTD. EFF</b>		<b>ELEC. TYPE</b>
<b>FULL LOAD PF:</b>	88.5&88.5	<b>3/4 LOAD PF:</b>	87.5	<b>1/2 LOAD PF:</b>	83.5	92.3		SQ CAGE INV RATED

F.L. TORQUE	LOCKED ROTOR AMPS	L.R. TORQUE	B.D. TORQUE	F.L. RISE°C
110.2 LB-FT	1040 / 520	179.5 LB-FT 163 %	258 LB-FT 234 %	22

SOUND PRESSURE @ 3 FT.	SOUND POWER	ROTOR WK^2	MAX. WK^2	SAFE STALL TIME	STARTS / HOUR	APPROX. MOTOR WGT
75 dBA	85 dBA	- LB-FT^2	- LB-FT^2	15 SEC.	2	937 LBS.

**\*\*\* SUPPLEMENTAL INFORMATION \*\*\***

DE BRACKET TYPE	ODE BRACKET TYPE	MOUNT TYPE	ORIENTATION	SEVERE DUTY	HAZARDOUS LOCATION	DRIP COVER	SCREENS	PAINT
STANDARD	STANDARD	RIGID	HORIZONTAL	FALSE	NONE	FALSE	NONE	BLUE (ENAMEL)

BEARINGS		GREASE	SHAFT TYPE	SPECIAL DE	SPECIAL ODE	SHAFT MATERIAL	FRAME MATERIAL
DE	ODE						
BALL	BALL	POLYREX EM	TS	NONE	NONE	AISI 1045 (C-240)	CAST IRON
6312	6312						

THERMO-PROTECTORS				THERMISTORS	CONTROL	SPACE HEATERS
THERMOSTATS	PROTECTORS	WDG RTDs	BRG RTDs			
TSTATS (N/C)	NOT	NONE	NONE	NONE	FALSE	NONE VOLTS

\*

N

O

T

E

S

<b>INVERTER TORQUE:</b> VARIABLE 10:1			
<b>INV. HP SPEED RANGE:</b> NONE			
<b>ENCODER:</b> NONE			
NONE	NONE		
NONE	NONE	PPR	
<b>BRAKE:</b> NONE NONE			
NONE	P/N	NONE	
NONE	NONE		
NONE	FT-LB	NONE	V NO BRAKE Hz

## Data Sheet

Date: 1/17/2018

170044.60



Data @ 460 V

## Motor Load Data

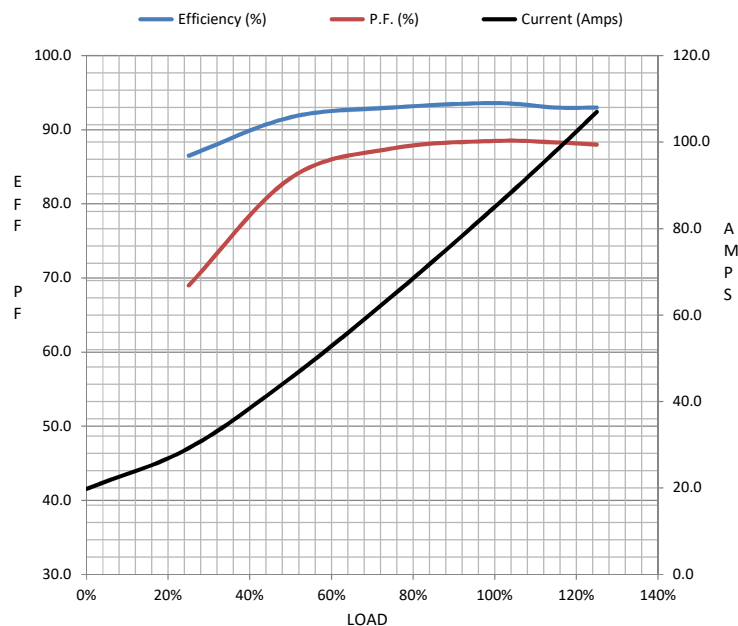
Load	0%	25%	50%	75%	100%	115%	125%	LR	
Current (Amps)	19.8	29.2	45.5	64.5	85.0	98.0	107	520	
Torque (ft-lb)	0.00	27.4	54.8	82.5	110	127	138	180	
RPM	3600	3595	3590	3580	3575	3,570	3565	0	
Efficiency (%)		86.5	91.7	93.0	93.6	93.0	93.0		
P.F. (%)	12.5	69.0	83.5	87.5	88.5	88.3	88.0	30.4	

## Motor Speed Data

	LR	Pull-Up	BD	Rated	Idle
Speed (RPM)	0	2170	3445	3575	3600
Current (Amps)	520	458	285	85.0	19.8
Torque (ft-lb)	180	133	258	110	0.00

## Information Block

HP	75.0			
Sync. RPM	3600			
Frame	364			
Enclosure	DP			
Construction	TDC			
Voltage	208-230/460#190/380 V			
Frequency	60 Hz			
Design	B			
LR Code letter	F			
Service Factor	1.15			
Temp Rise @ FL	22 ° C			
Duty	CONT			
Ambient	40 ° C			
Elevation	1,000 feet			
Rotor/Shaft wk²	0.00 Lb-Ft²			
Ref Wdg	T18302022 DR			
Sound Pressure @ 1M	75 dBA			
VFD Rating	VARIABLE 10:1			
Outline Dwg	SS622171LE			
Conn. Diag	004172.01			
Additional Specifications:				
0				
0				
EQUIV CKT (OHMS / PHASE)				
R1	R2	X1	X2	Xm
0.0000	0.0000	0.0000	0.0000	0.0000



## Speed - Torque Curve

