

PRODUCT INFORMATION PACKET



Model No: 170037.60

Catalog No: 170037.60

WATTSaver® General Purpose Motor, 30 & 25 HP, 3 Ph, 60 & 50 Hz, 208-230/460 & 190/380 V,
3600 & 3000 RPM, 286TS Frame, TEFC



Regal and Leeson are trademarks of Regal Rexnord Corporation or one of its affiliated companies.

©2023 Regal Rexnord Corporation, All Rights Reserved. MC017097E





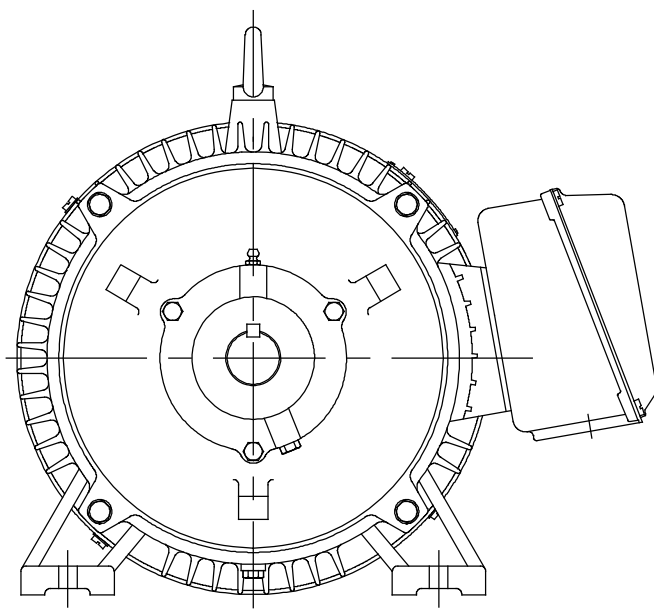
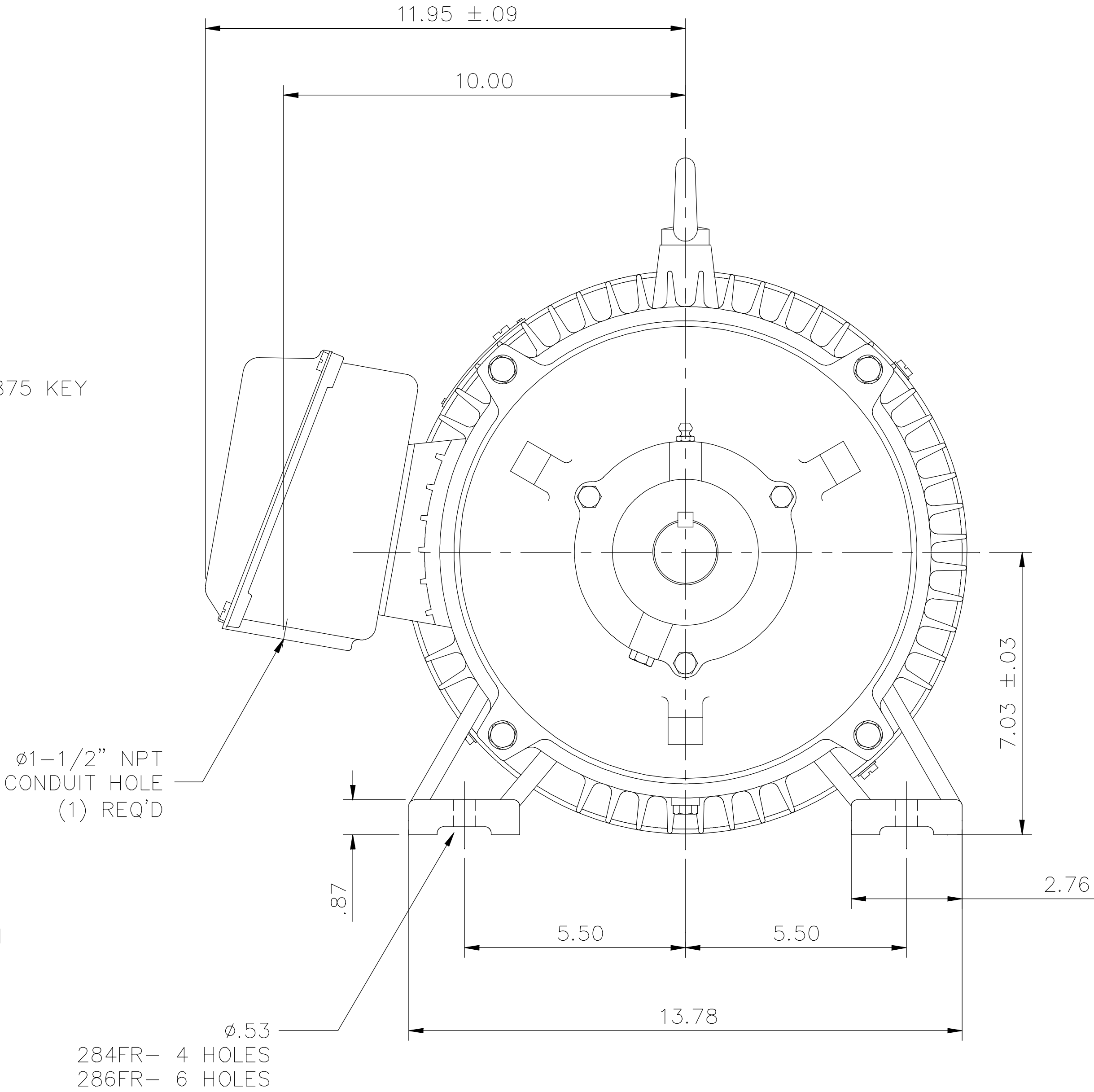
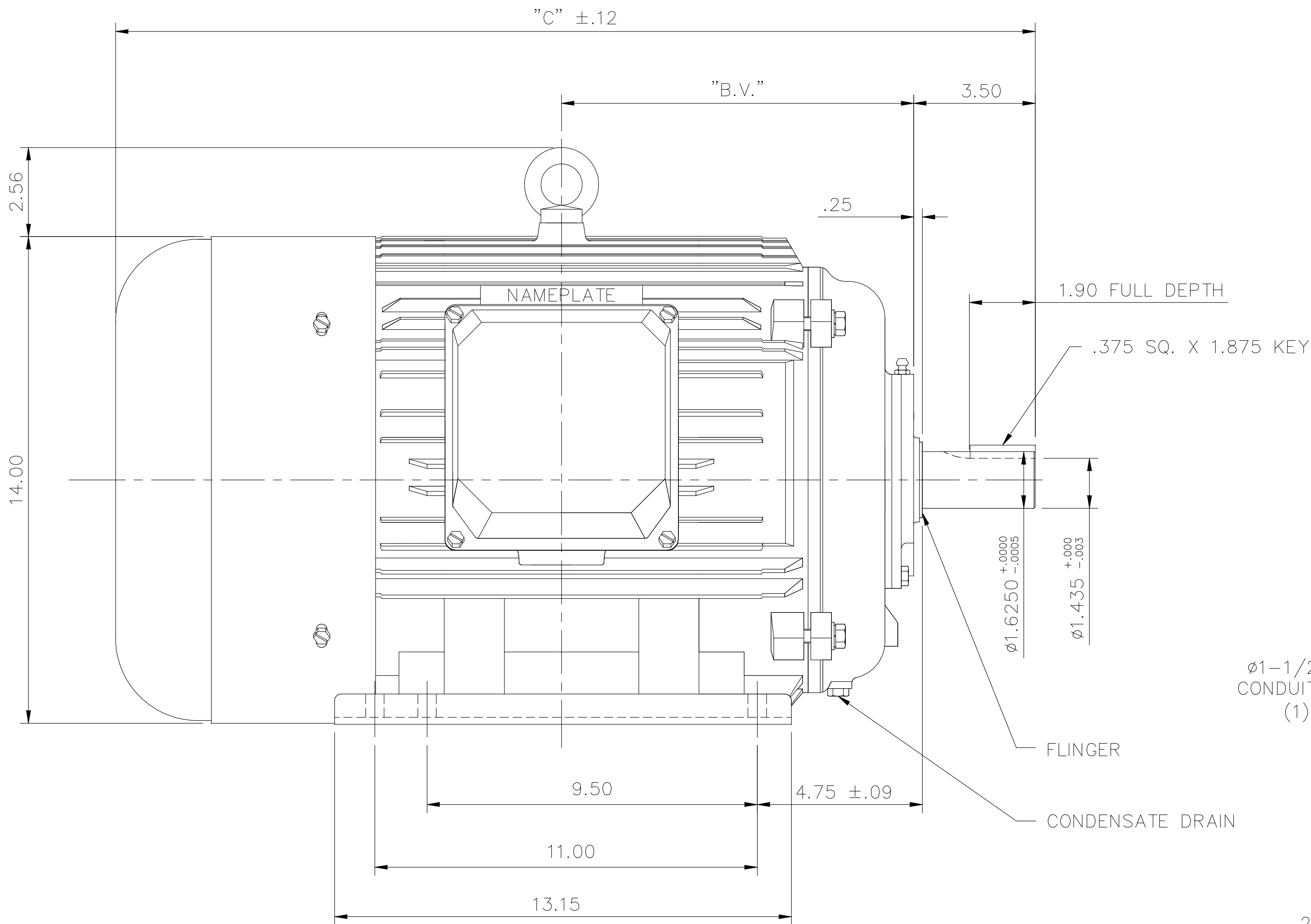
Nameplate Specifications

Phase	3	Output HP	30 & 25 Hp
Output KW	22.4 & 18.7 kW	Voltage	208-230/460 & 190/380 V
Speed	3550 & 2950 rpm	Service Factor	1.15 & 1.15
Frame	286TS	Enclosure	Totally Enclosed Fan Cooled
Thermal Protection	No Protection	Efficiency	93 %
Ambient Temperature	40 °C	Frequency	60 & 50 Hz
Current	74-67.6/33..8 & 66.4/33.2 A	Power Factor	89.3
Duty	Continuous	Insulation Class	F
Design Code	B	KVA Code	G
Drive End Bearing Size	6311	Opp Drive End Bearing Size	6309
UL	Recognized	CSA	Y
CE	Y	IP Code	43
Number of Speeds	1		

Technical Specifications


Electrical Type	Squirrel Cage Inverter Rated	Starting Method	Wye Start Delta Run Or Inverter
Poles	2	Rotation	Reversible
Resistance Main	.256 Ohms	Mounting	Rigid Base
Motor Orientation	Horizontal	Drive End Bearing	Ball
Opp Drive End Bearing	Ball	Frame Material	Cast Iron
Shaft Type	TS	Overall Length	24.88 in
Shaft Diameter	1.625 in	Shaft Extension	3.25 in
Assembly/Box Mounting	F1/F2 CAPABLE		
Connection Drawing	004172.01	Outline Drawing	16954060-286TS

169540-60



F2 VIEW

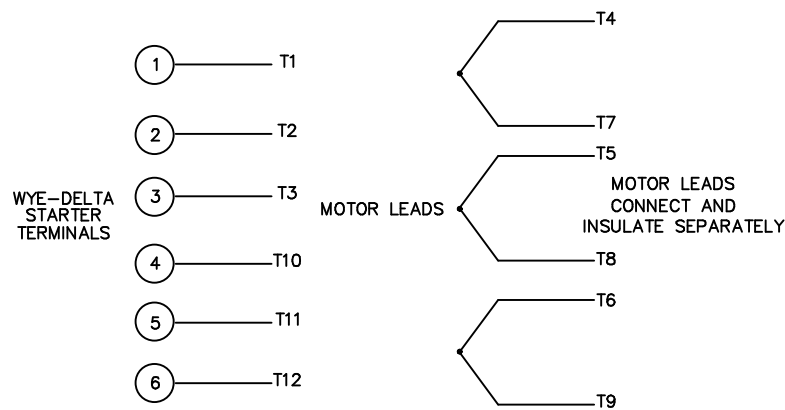
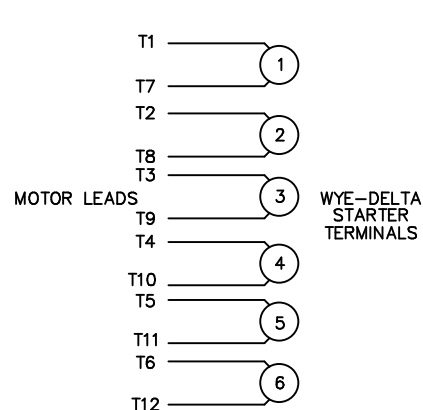
FRAME DESIGN	"C"	"BV"
284TS	24.88	4.72
286TS	26.46	3.97

				TOLERANCES UNLESS SPECIFIED		 REGAL-BELOIT CORPORATION	DRAWN JJK 03/29/99			
				DEC.	INCHES		CHK			
H	ADDED F2 VIEW ECO-0134445	WGJ 11/10/2017	EMH	.X	±.1	TITLE OUTLINE-280TS FRAME, TEFC-RIGID NEW CONDUIT BOX	APPD	PG	03/31/99	
03	REMOVED REFERENCE TO 250 FRAME	MOL 08/15/2012		.XX	±.03		SCALE 1=4			
02	REDRAWN TO CURRENT CAD STANDARDS	CJK 11/1/01		.XXX	±.005		REF			
01	ADDED HOLES 286TS BASE	JJK 07/13/99		.XXXX	±.0005	MAT'L. CAST IRON	FMF			
NO.	REVISION	BY & DATE	CHK	ANG	±7'30"	FINISH	PREV			
THIS DRAWING IN DESIGN AND DETAIL IS OUR PROPERTY AND MUST NOT BE USED EXCEPT IN CONNECTION WITH OUR WORK ALL RIGHTS OF DESIGN AND INVENTION ARE RESERVED THIS IS AN ELECTRONICALLY GENERATED DOCUMENT - DO NOT SCALE THIS PRINT			RFP		CAD FILE 16954060		SIZE	DRAWING NO.	PAGE OF	REV.
			DIST				B	169540-60		H

WYE - DELTA STARTING USEABLE ON 2,4 AND 6 POLE MOTORS.

LOW VOLTAGE CONNECTION

HIGH VOLTAGE CONNECTION



REFER TO THE WYE-DELTA STARTER CONNECTION INSTRUCTIONS FOR PROPER CONNECTION OF POWER LINES TO STARTER.

PART WINDING START USABLE ON 4 & 6 POLE MOTORS
LOW VOLTAGE CONNECTION ONLY

REFER TO THE PART WINDING STARTER INSTRUCTIONS FOR PROPER CONNECTION OF POWER LINES TO STARTER.

REFER TO THE CUTLER - HAMMER OR EQUIV. FOR PROPER SELECTION OF OVERLOAD HEATER COILS.

LINE LEADS



ACROSS THE LINE START & RUN

	LINE 1	LINE 2	LINE 3	JOIN & INSULATE SEPARATELY
HIGH VOLT	T1,T12	T2,T10	T3,T11	(T4,T7) (T5,T8) (T6,T9)
LOW VOLT	T1,T6 T7,T12	T2,T4 T8,T10	T3,T5 T9,T11	

TOLERANCES
UNLESS SPECIFIED

DEC. INCHES

.X ±.1

.XX ±.01

.XXX ±.005

.XXXX ±.0005

ANG ±1/2"



ELECTRIC MOTORS
GEARMOTORS
AND DRIVES

DRAWN WLW 09/08/77

CHK RPB 09/12/77

APPD JCW 09/12/77

SCALE 1=1

REF

FMF

PREV

NO.	REVISION	BY & DATE	CHK	ANG
03	REV'D LOW VOLTAGE CONN. LEADS PER ELEC.	BJB 06/07/00	.XX	±.01
02	ADDED T-STAT. NOTES PER ELECTRICAL	KMM 06/02/98	.XXX	±.005
01	REDRAWN TO CAD	DBT 06/02/97	.XXXX	±.0005

TITLE DELTA - WYE CONNECTION DIAGRAM

MAT'L.

FINISH

THIS DRAWING IN DESIGN AND DETAIL IS OUR PROPERTY AND MUST NOT BE USED EXCEPT IN CONNECTION WITH OUR WORK ALL RIGHTS OF DESIGN AND INVENTION ARE RESERVED THIS IS AN ELECTRONICALLY GENERATED DOCUMENT - DO NOT SCALE THIS PRINT

RFP

DIST

CAD FILE 00417201

SIZE

A

DRAWING NO.

004172-01

REV.

03

Data Sheet

Date: 1/31/2018

170037.60



Data @ 460 V

Motor Load Data

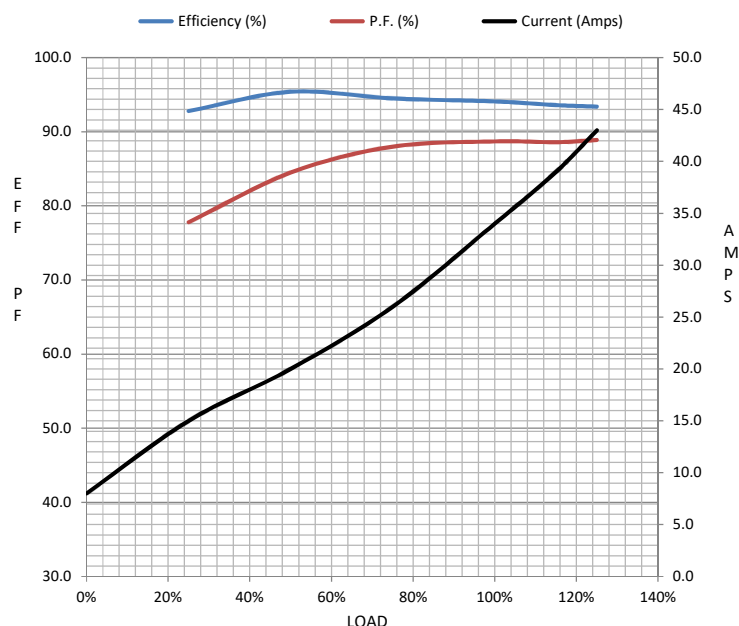
Load	0%	25%	50%	75%	100%	115%	125%	LR	
Current (Amps)	8.0	15.0	20.0	26.0	34.0	39.0	43.0	217	
Torque (ft-lb)	0.00	17.0	25.5	34.0	44.5	54.0	56.5	90.6	
RPM	3600	3588	3577	3565	3555	3,545	3535	0	
Efficiency (%)		92.8	95.4	94.5	94.1	93.6	93.4		
P.F. (%)	8.2	77.8	84.5	88.0	88.7	88.6	88.9	0.0	

Motor Speed Data

	LR	Pull-Up	BD	Rated	Idle
Speed (RPM)	0	1200	3350	3555	3600
Current (Amps)	217	215	145	34.0	8.0
Torque (ft-lb)	90.6	68.0	118	44.5	0.00

Information Block

HP	30.0			
Sync. RPM	3600			
Frame	286			
Enclosure	TEFC			
Construction	TFC			
Voltage	208-230/460#190/380	V		
Frequency	60	Hz		
Design	A			
LR Code letter	G			
Service Factor	1.15			
Temp Rise @ FL	70	° C		
Duty	CONT			
Ambient	40	° C		
Elevation	1,000	feet		
Rotor/Shaft wk²	2.05	Lb-Ft²		
Ref Wdg	T14502017 NONE			
Sound Pressure @ 1M	80	dBA		
VFD Rating	CONSTANT 2:1			
Outline Dwg	16954060			
Conn. Diag	004172.01			
Additional Specifications:				
0				
0				
EQUIV CKT (OHMS / PHASE)				
R1	R2	X1	X2	Xm
0.0000	0.0000	0.0000	0.0000	0.0000



Speed - Torque Curve

