

PRODUCT INFORMATION PACKET



Model No: 170037.00

Catalog No: 170037.00

General Purpose Motor, 30 & 25 HP, 3 Ph, 60 & 50 Hz, 208-230/460 & 190/380 V, 3600 & 3000 RPM,
286TS Frame, TEFC



Regal and Leeson are trademarks of Regal Rexnord Corporation or one of its affiliated companies.

©2023 Regal Rexnord Corporation, All Rights Reserved. MC017097E





Nameplate Specifications

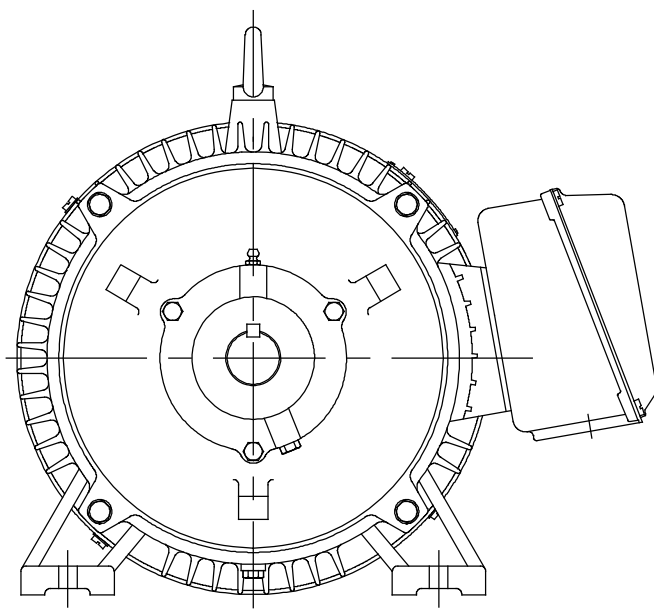
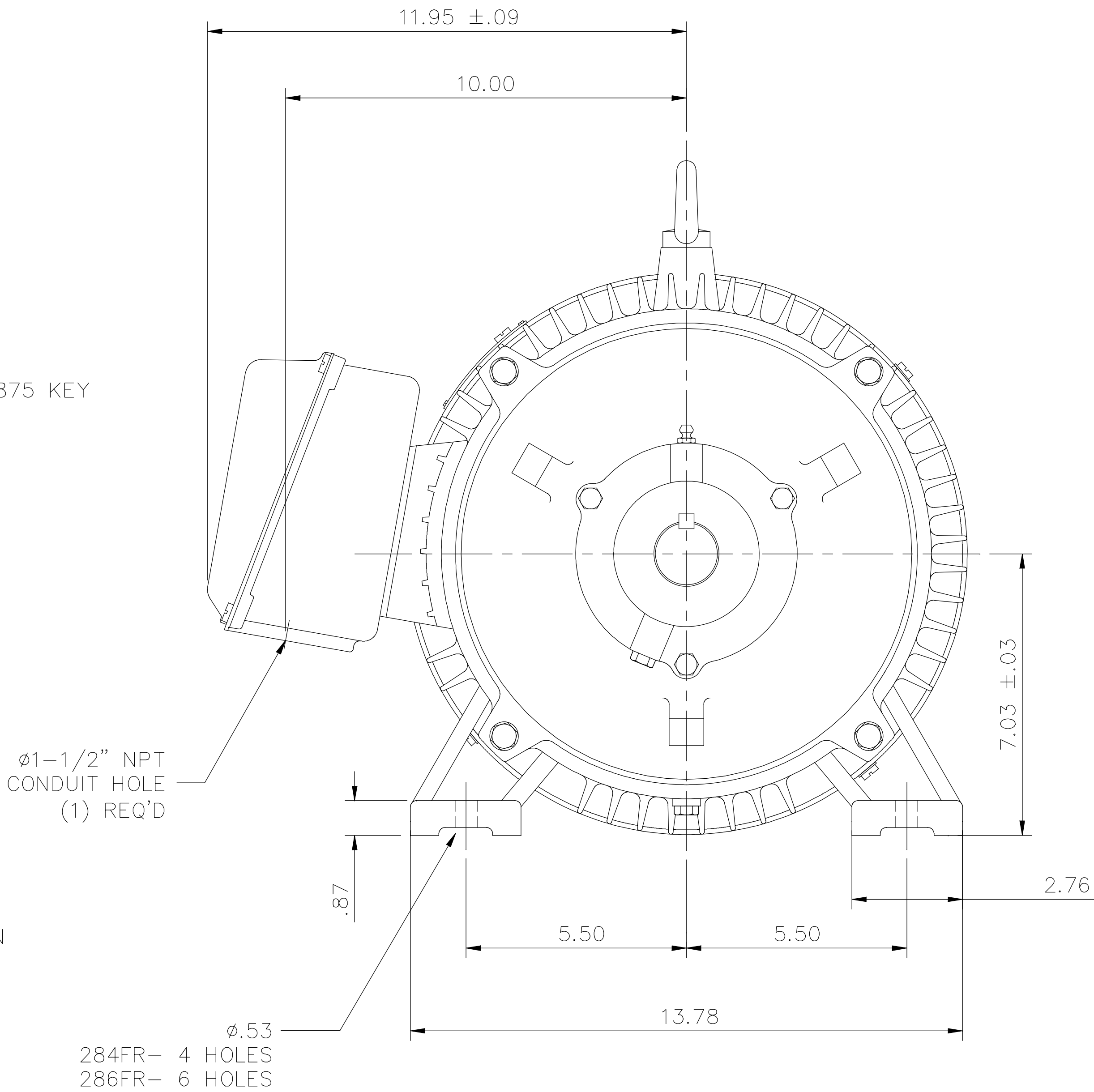
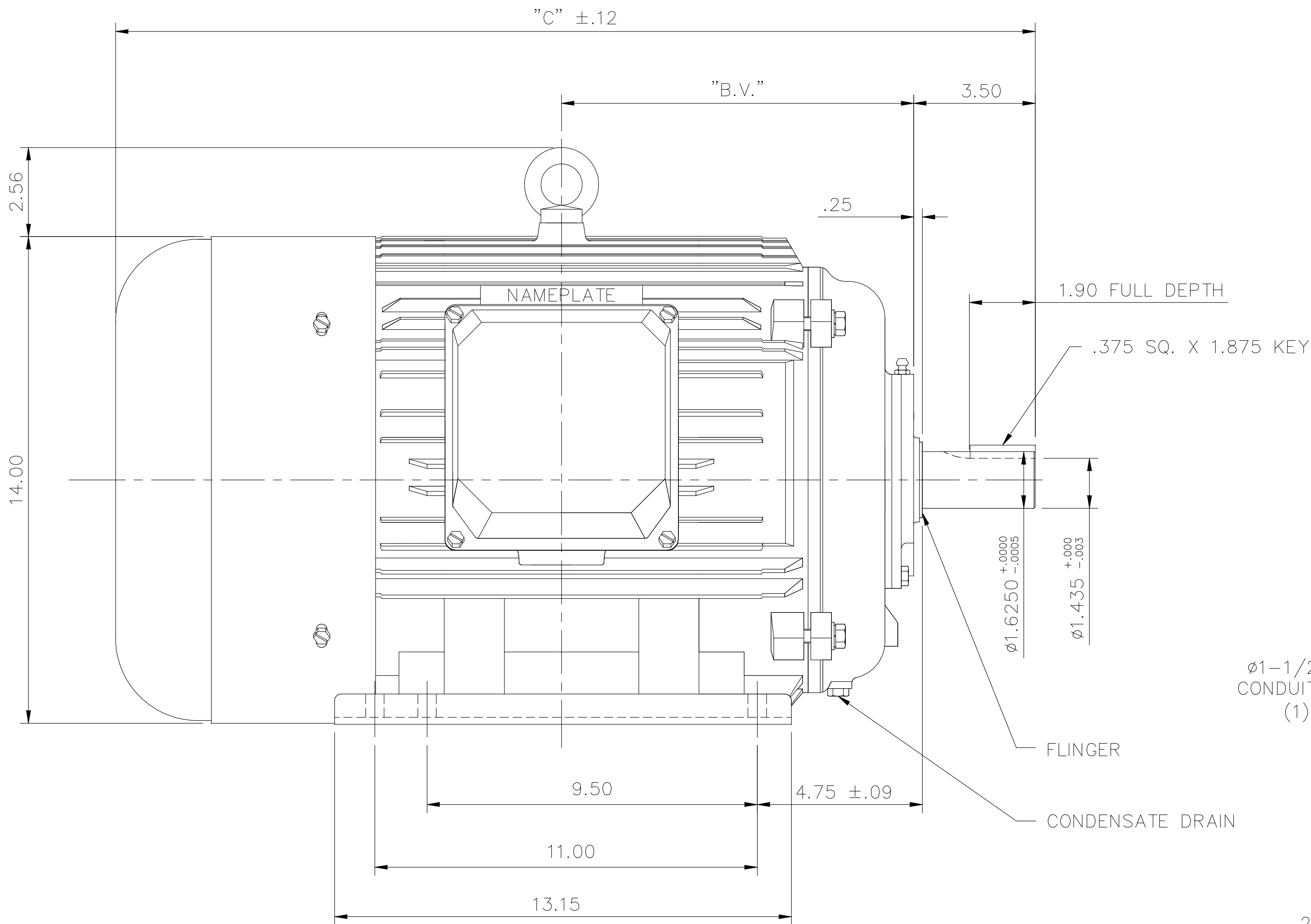
| | | | |
|------------------------|----------------------|----------------------------|-----------------------------|
| Phase | 3 | Output HP | 30 & 25 Hp |
| Output KW | 22.4 & 18.7 kW | Voltage | 208-230/460 & 190/380 V |
| Speed | 3555 & 2950 rpm | Service Factor | 1.15 & 1.15 |
| Frame | 286TS | Enclosure | Totally Enclosed Fan Cooled |
| Thermal Protection | No Protection | Efficiency | 94.1 & 93 % |
| Ambient Temperature | 40 °C | Frequency | 60 & 50 Hz |
| Current | 74-68/34 & 66.5/33 A | Power Factor | 88.7 |
| Duty | Continuous | Insulation Class | F |
| Design Code | B | KVA Code | G |
| Drive End Bearing Size | 6311 | Opp Drive End Bearing Size | 6309 |
| UL | Recognized | CSA | Y |
| CE | Y | IP Code | 43 |
| Number of Speeds | 1 | | |

Technical Specifications

| | | | |
|-------------------|-----------------------------|-----------------------|---------------------|
| Electrical Type | Squirrel Cage Induction Run | Starting Method | Wye Start Delta Run |
| Poles | 2 | Rotation | Reversible |
| Mounting | Rigid Base | Motor Orientation | Horizontal |
| Drive End Bearing | Ball | Opp Drive End Bearing | Ball |
| Frame Material | Cast Iron | Shaft Type | TS |
| Overall Length | 26.46 in | Shaft Diameter | 1.625 in |
| Shaft Extension | 3.25 in | Assembly/Box Mounting | F1/F2 CAPABLE |
| Outline Drawing | 16954060 | Connection Drawing | 004172.03 |

This is an uncontrolled document once printed or downloaded and is subject to change without notice. Date Created:06/22/2023

169540-60



F2 VIEW

| FRAME DESIGN | "C" | "BV" |
|--------------|-------|------|
| 284TS | 24.88 | 4.72 |
| 286TS | 26.46 | 3.97 |

| NO. | REVISION | BY & DATE | CHK | ANG | TOLERANCES UNLESS SPECIFIED | | FINISH | CAD FILE 16954060 | SIZE B | DRAWING NO. 169540-60 | PAGE OF | REV. H |
|--|----------------------------------|----------------|-----|-------|-----------------------------|--------|--------|-------------------|--------|-----------------------|---------|--------|
| | | | | | DEC. | INCHES | | | | | | |
| H | ADDED F2 VIEW ECO-0134445 | WGJ 11/10/2017 | EMH | .X | ±.1 | | | | | | | |
| 03 | REMOVED REFERENCE TO 250 FRAME | MOL 08/15/2012 | | .XX | ±.03 | | | | | | | |
| 02 | REDRAWN TO CURRENT CAD STANDARDS | CJK 11/1/01 | | .XXX | ±.005 | | | | | | | |
| 01 | ADDED HOLES 286TS BASE | JKK 07/13/99 | | .XXXX | ±.0005 | | | | | | | |
| THIS DRAWING IN DESIGN AND DETAIL IS OUR PROPERTY AND MUST NOT BE USED EXCEPT IN CONNECTION WITH OUR WORK ALL RIGHTS OF DESIGN AND INVENTION ARE RESERVED THIS IS AN ELECTRONICALLY GENERATED DOCUMENT - DO NOT SCALE THIS PRINT | | | | | | | | | | | | |



REGAL-BELOIT CORPORATION

DRAWN JJK 03/29/99

CHK

APPD PG 03/31/99

SCALE 1=4

REF

FMF

PREV

WYE - DELTA STARTING USEABLE ON 2,4 AND 6 POLE MOTORS.

LOW VOLTAGE CONNECTION



HIGH VOLTAGE CONNECTION



REFER TO THE WYE-DELTA STARTER CONNECTION INSTRUCTIONS FOR PROPER CONNECTION OF POWER LINES TO STARTER.

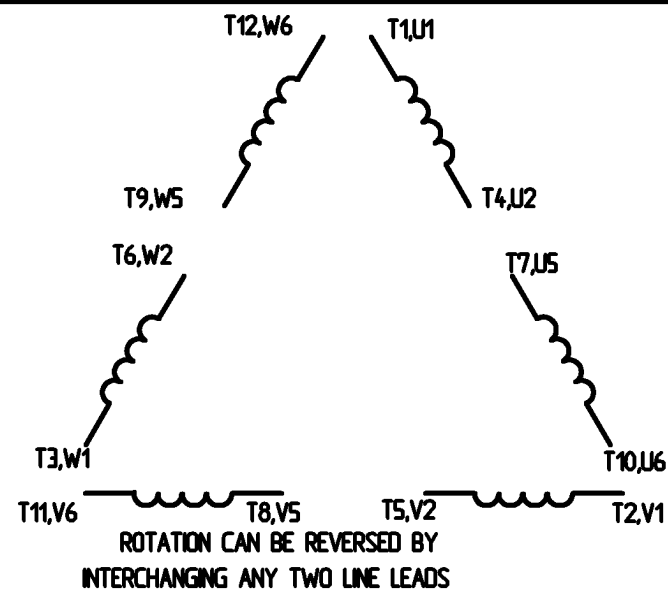
PART WINDING START USABLE ON 4 & 6 POLE MOTORS LOW VOLTAGE CONNECTION ONLY



REFER TO THE PART WINDING STARTER INSTRUCTIONS FOR PROPER CONNECTION OF POWER LINES TO STARTER.

REFER TO THE CUTLER - HAMMER OR EQUIV. FOR PROPER SELECTION OF OVERLOAD HEATER COILS.

LINE LEADS



12 LEAD DELTA CONNECTION ACROSS THE LINE START (FOR Y START DELTA RUN, REMOVE THE JUMPERS)

LOW VOLTAGE
(MUST BE REWIRED AS SHOWN)

HIGH VOLTAGE
(FACTORY WIRED FOR HIGH VOLTAGE AS SHOWN)



| | | | | TOLERANCES UNLESS SPECIFIED | | <div>LEESON</div> <div>ELECTRIC MOTORS GEARMOTORS AND DRIVES</div> | DRAWN C/W 08/28/02 | |
|---|----------|-----------|-----|-----------------------------|---------|--|--------------------|-------------|
| | | | | DEC. | INCHES | | CHK | |
| | | | | X | ± .1 | | APPO | |
| | | | | XX | ± .01 | | SCALE | 1:1 |
| | | | | XXX | ± .005 | | REF | |
| | | | | XXXX | ± .0005 | MAT'L | FMF | |
| NO. | REVISION | BY & DATE | CHK | ANG | ± 1/2° | FINISH | PREV | |
| THIS DRAWING IN DESIGN AND DETAIL IS OUR PROPERTY AND MUST NOT BE USED EXCEPT IN CONNECTION WITH OUR WORK. ALL RIGHTS OF DESIGN AND INVENTION ARE RESERVED. THIS IS AN ELECTRONICALLY GENERATED DOCUMENT - DO NOT SCALE THIS PRINT. | | | | REP | | CAD FILE | 00417203 | SIZE |
| | | | | DST | | | | A |
| | | | | | | | | DRAWING NO. |
| | | | | | | | | 004172-03 |
| | | | | | | | | REV. |

ERROR: syntaxerror
OFFENDING COMMAND: --nostringval--

STACK:

/CB
-dictionary-
/Pscript_WinNT_Compat
-dictionary-