

# PRODUCT INFORMATION PACKET



Model No: 170029.60

Catalog No: 170029.60

WATTSaver® General Purpose Motor, 75 & 60 HP, 3 Ph, 60 & 50 Hz, 208-230/460 & 190/380 V,  
1800 & 1500 RPM, 365T Frame, DP



Regal and Leeson are trademarks of Regal Rexnord Corporation or one of its affiliated companies.

©2023 Regal Rexnord Corporation, All Rights Reserved. MC017097E



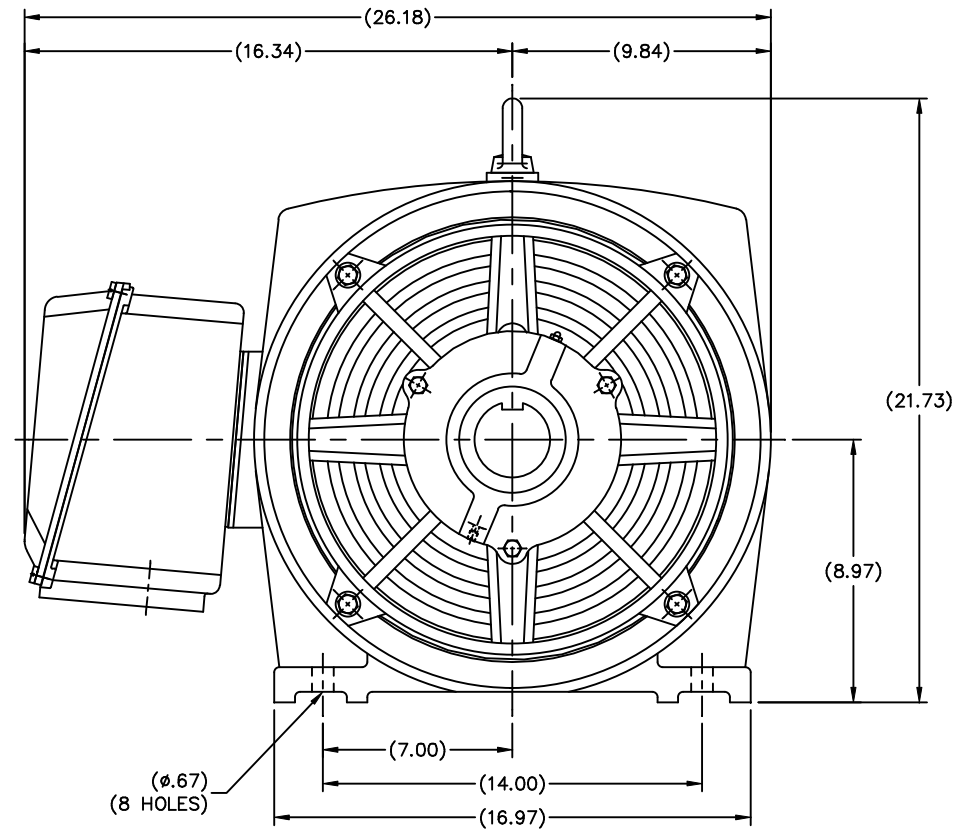
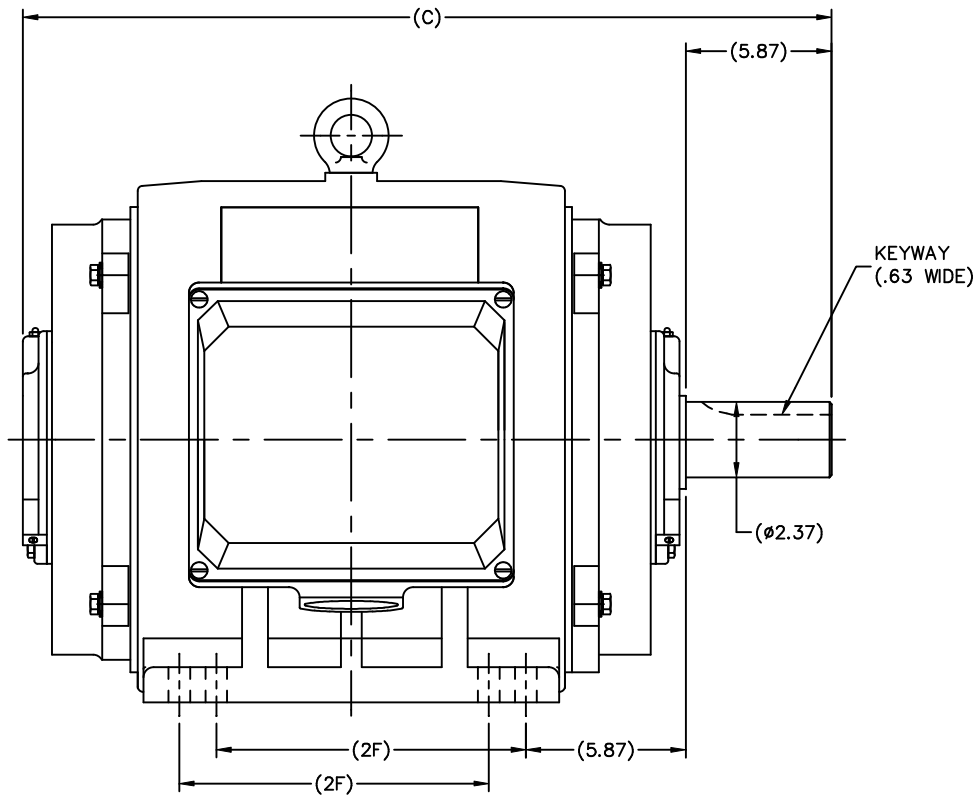


## Nameplate Specifications

Phase	3	Output HP	75 & 60 Hp
Output KW	56.0 & 45.0 kW	Voltage	208-230/460 & 190/380 V
Speed	1788 & 1490 rpm	Service Factor	1.15 & 1.15
Frame	365T	Enclosure	Drip Proof
Thermal Protection	Thermostat	Efficiency	95.4 %
Ambient Temperature	40 °C	Frequency	60 & 50 Hz
Current	189-174/87.0 & 141/70.5 A	Power Factor	84.5
Duty	Continuous	Insulation Class	F
Design Code	B	KVA Code	G
Drive End Bearing Size	6314	Opp Drive End Bearing Size	6314
UL	Recognized	CSA	Y
CE	Y	IP Code	12
Number of Speeds	1		

## Technical Specifications

Electrical Type	Squirrel Cage Inverter Rated	Starting Method	Wye Start Delta Run Or Inverter
Poles	4	Rotation	Reversible
Resistance Main	.0512 Ohms	Mounting	Rigid Base
Motor Orientation	Horizontal	Drive End Bearing	Ball
Opp Drive End Bearing	Ball	Frame Material	Cast Iron
Shaft Type	T	Overall Length	32.72 in
Shaft Diameter	2.375 in	Shaft Extension	5.88 in
Assembly/Box Mounting	F1/F2 CAPABLE		
Connection Drawing	004172.01	Outline Drawing	SS622157LE



DIMENSIONS IN TABLE ARE FOR REFERENCE

N364 ODP	31.54	11.26
N365 ODP	32.72	12.24
FRAME	C	2F

			TOLERANCES UNLESS SPECIFIED		LEESON	ELECTRIC MOTORS GEARMOTORS AND DRIVES	DRAWN MSG 08-25-2006		
			DEC.	INCHES			CHK	ML	08-25-2006
			.X	±.1			APPD	SB	08-28-2006
			.XX	±.03	TITLE OUTLINE			SCALE 7-32	
			.XXX	±.005	364T/365T FR. - ODP			REF	
			.XXXX	±.0005	MAT'L			FMF HEBEI	
NO.	REVISION	BY & DATE	CHK	ANG	±7'30"	FINISH	PREV		
THIS DRAWING IN DESIGN AND DETAIL IS OUR PROPERTY AND MUST NOT BE USED EXCEPT IN CONNECTION WITH OUR WORK ALL RIGHTS OF DESIGN AND INVENTION ARE RESERVED THIS IS AN ELECTRONICALLY GENERATED DOCUMENT - DO NOT SCALE THIS PRINT						CAD FILE SS622157LE		SIZE B	DRAWING NO. SS622157LE
DIST CHINA								PAGE OF	REV.

```
ERROR: syntaxerror
OFFENDING COMMAND: --nostringval--

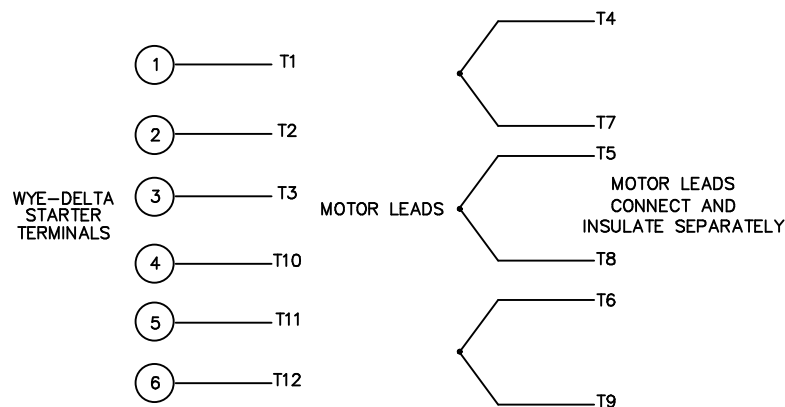
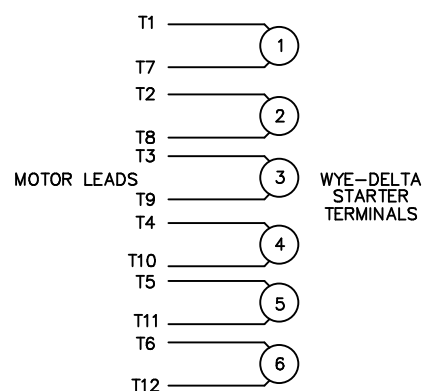
STACK:

-savelevel-
```

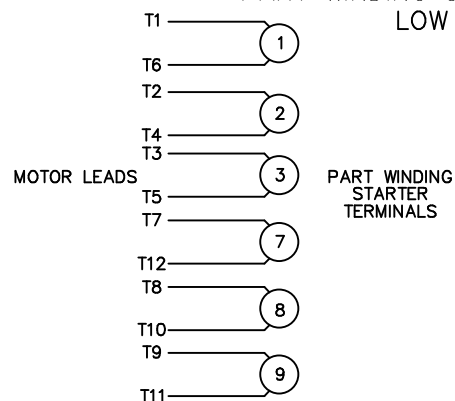
## WYE - DELTA STARTING USEABLE ON 2,4 AND 6 POLE MOTORS.

## LOW VOLTAGE CONNECTION

## HIGH VOLTAGE CONNECTION



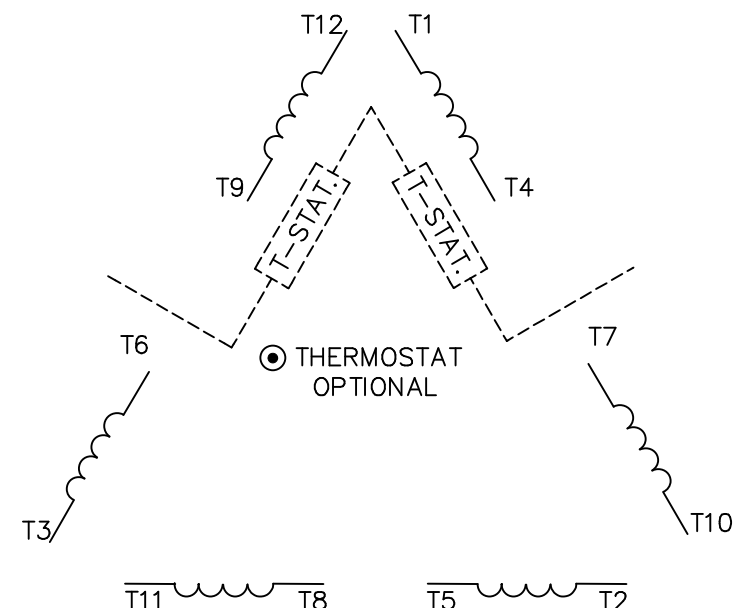
REFER TO THE WYE-DELTA STARTER CONNECTION INSTRUCTIONS FOR PROPER CONNECTION OF POWER LINES TO STARTER.

PART WINDING START USABLE ON 4 & 6 POLE MOTORS  
LOW VOLTAGE CONNECTION ONLY

REFER TO THE PART WINDING STARTER INSTRUCTIONS FOR PROPER CONNECTION OF POWER LINES TO STARTER.

REFER TO THE CUTLER - HAMMER OR EQUIV. FOR PROPER SELECTION OF OVERLOAD HEATER COILS.

## LINE LEADS



ROTATION CAN BE REVERSED BY INTERCHANGING ANY TWO LINE LEADS  
 ● RED LEADS OR P1, P2, FOR N/C THERMOSTAT

## ACROSS THE LINE START &amp; RUN

	LINE 1	LINE 2	LINE 3	JOIN & INSULATE SEPARATELY
HIGH VOLT	T1,T12	T2,T10	T3,T11	(T4,T7) (T5,T8) (T6,T9)
LOW VOLT	T1,T6 T7,T12	T2,T4 T8,T10	T3,T5 T9,T11	

TOLERANCES  
UNLESS SPECIFIED

DEC. INCHES

.X ±.1

.XX ±.01

.XXX ±.005

.XXXX ±.0005

ANG ±1/2"



ELECTRIC MOTORS  
GEARMOTORS  
AND DRIVES

DRAWN WLW 09/08/77

CHK RPB 09/12/77

APPD JCW 09/12/77

SCALE 1=1

REF

FMF

PREV

03 REV'D LOW VOLTAGE CONN. LEADS PER ELEC.

BJB 06/07/00

02 ADDED T-STAT. NOTES PER ELECTRICAL

KMM 06/02/98

01 REDRAWN TO CAD

DBT 06/02/97

NO. REVISION

BY &amp; DATE

CHK

ANG

TITLE DELTA - WYE CONNECTION DIAGRAM

MAT'L.

FINISH

RFP

CAD FILE 00417201

SIZE

A

DRAWING NO.

004172-01

REV.

03

THIS DRAWING IN DESIGN AND DETAIL IS OUR PROPERTY AND MUST NOT BE USED EXCEPT IN CONNECTION WITH OUR WORK ALL RIGHTS OF DESIGN AND INVENTION ARE RESERVED THIS IS AN ELECTRONICALLY GENERATED DOCUMENT - DO NOT SCALE THIS PRINT

## Data Sheet

Date: 1/29/2018

170029.60



Data @ 460 V

## Motor Load Data

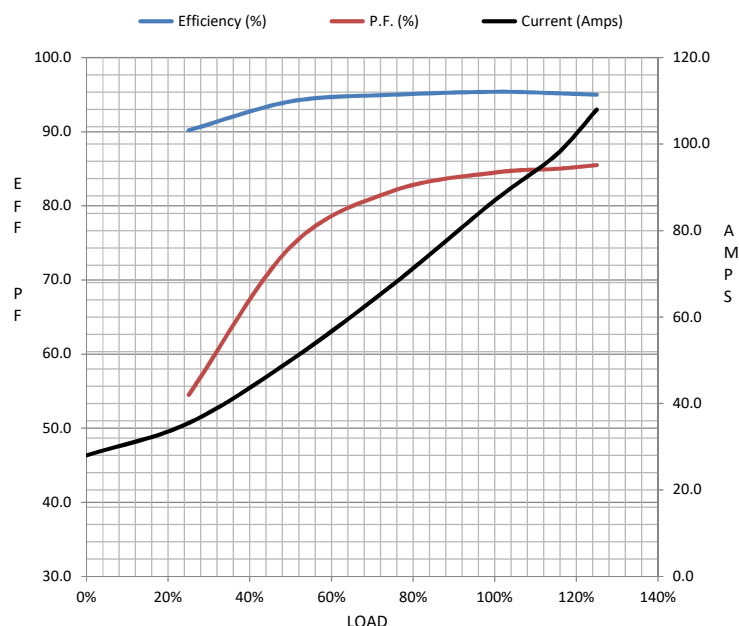
Load	0%	25%	50%	75%	100%	115%	125%	LR	
Current (Amps)	28.0	35.5	50.0	67.5	87.0	97.5	108	556	
Torque (ft-lb)	0.00	55.0	110	165	220	248	276	390	
RPM	1800	1798	1795	1792	1788	1787	1785	0	
Efficiency (%)		90.2	94.1	95.0	95.4	95.2	95.0		
P.F. (%)	6.5	54.5	74.5	82.0	84.5	85.0	85.5	0.0	

## Motor Speed Data

	LR	Pull-Up	BD	Rated	Idle
Speed (RPM)	0	1200	1735	1788	1800
Current (Amps)	556	467	300	87.0	28.0
Torque (ft-lb)	390	311	604	220	0.00

## Information Block

HP	75.0			
Sync. RPM	1800			
Frame	365			
Enclosure	DP			
Construction	TDC			
Voltage	208-230/460#190/380	V		
Frequency	60	Hz		
Design	A			
LR Code letter	G			
Service Factor	1.15			
Temp Rise @ FL	26	° C		
Duty	CONT			
Ambient	40	° C		
Elevation	1,000	feet		
Rotor/Shaft wk²	0.00	Lb-Ft²		
Ref Wdg	T18304021	DR		
Sound Pressure @ 1M	999	dBA		
VFD Rating	CONSTANT 10:1			
Outline Dwg	SS622157LE			
Conn. Diag	004172.01			
Additional Specifications:				
0				
0				
EQUIV CKT (OHMS / PHASE)				
R1	R2	X1	X2	Xm
0.0000	0.0000	0.0000	0.0000	0.0000



## Speed - Torque Curve

