

PRODUCT INFORMATION PACKET



Model No: 170029.00

Catalog No: 170029.00

General Purpose Motor, 75 & 60 HP, 3 Ph, 60 & 50 Hz, 208-230/460 & 190/380 V, 1800 & 1500 RPM,
365T Frame, DP



Regal and Leeson are trademarks of Regal Rexnord Corporation or one of its affiliated companies.

©2023 Regal Rexnord Corporation, All Rights Reserved. MC017097E



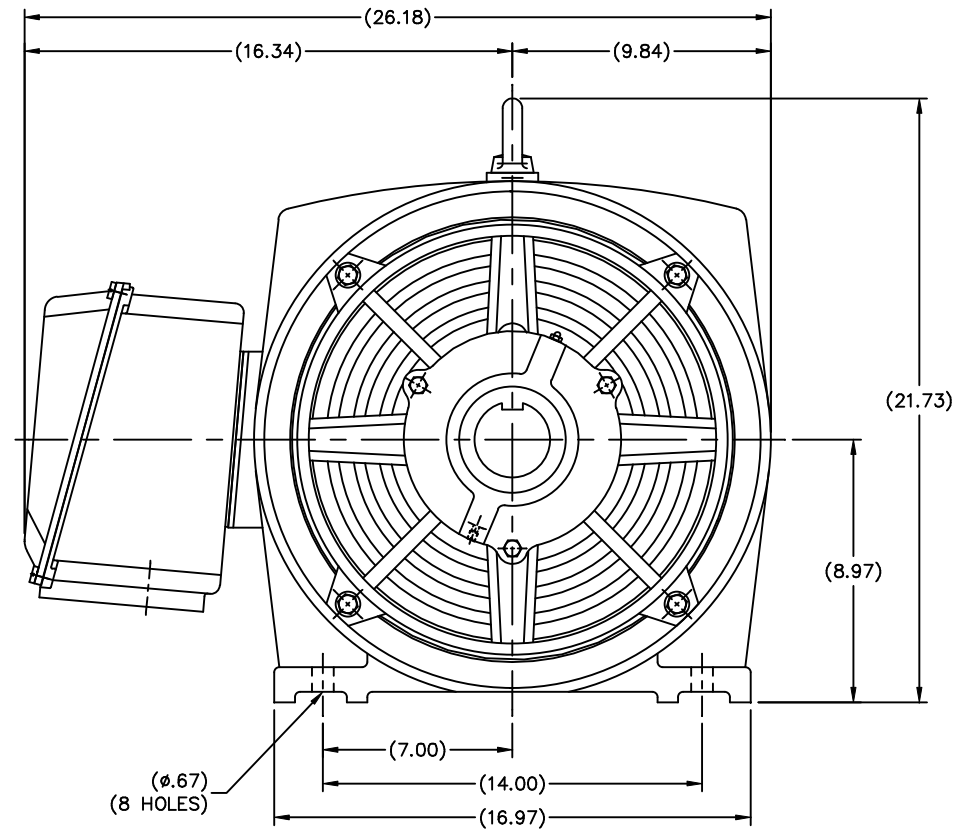
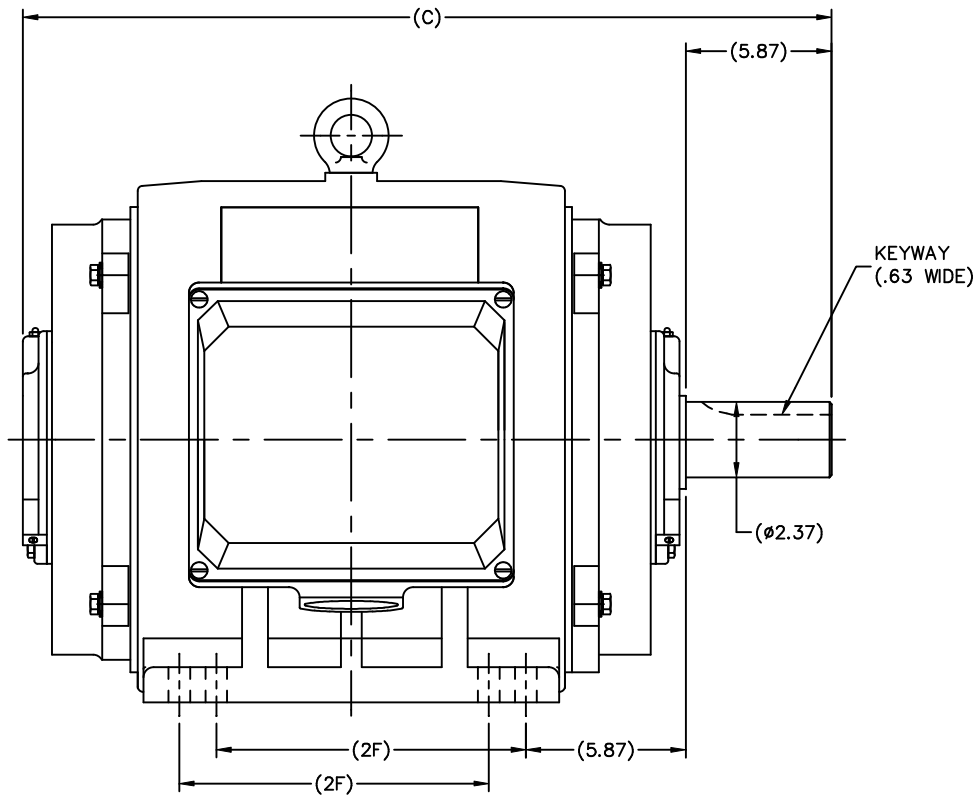


Nameplate Specifications

Phase	3	Output HP	75 & 60 Hp
Output KW	56.0 & 45.0 kW	Voltage	208-230/460 & 190/380 V
Speed	1788 & 1490 rpm	Service Factor	1.15 & 1.15
Frame	365T	Enclosure	Drip Proof
Thermal Protection	No Protection	Efficiency	95.4 %
Ambient Temperature	40 °C	Frequency	60 & 50 Hz
Current	189-174/87.0 & 141/70.5 A	Power Factor	84.5
Duty	Continuous	Insulation Class	F
Design Code	B	KVA Code	G
Drive End Bearing Size	6314	Opp Drive End Bearing Size	6314
UL	Recognized	CSA	Y
CE	Y	IP Code	12
Number of Speeds	1		

Technical Specifications

Electrical Type	Squirrel Cage Inverter Rated	Starting Method	Wye Start Delta Run Or Inverter
Poles	4	Rotation	Reversible
Resistance Main	.0512 Ohms	Mounting	Rigid Base
Motor Orientation	Horizontal	Drive End Bearing	Ball
Opp Drive End Bearing	Ball	Frame Material	Cast Iron
Shaft Type	T	Overall Length	32.72 in
Shaft Diameter	2.375 in	Shaft Extension	5.88 in
Assembly/Box Mounting	F1/F2 CAPABLE		
Outline Drawing	SS622157LE	Connection Drawing	004172.01



DIMENSIONS IN TABLE ARE FOR REFERENCE

N364 ODP	31.54	11.26
N365 ODP	32.72	12.24
FRAME	C	2F

			TOLERANCES UNLESS SPECIFIED		LEESON	ELECTRIC MOTORS GEARMOTORS AND DRIVES	DRAWN MSG 08-25-2006		
			DEC.	INCHES			CHK	ML	08-25-2006
			.X	±.1			APPD	SB	08-28-2006
			.XX	±.03	TITLE OUTLINE			SCALE	7-32
			.XXX	±.005	364T/365T FR. - ODP			REF	
			.XXXX	±.0005	MAT'L			FMF	HEBEI
NO.	REVISION	BY & DATE	CHK	ANG	±7'30"	FINISH	PREV		
THIS DRAWING IN DESIGN AND DETAIL IS OUR PROPERTY AND MUST NOT BE USED EXCEPT IN CONNECTION WITH OUR WORK ALL RIGHTS OF DESIGN AND INVENTION ARE RESERVED THIS IS AN ELECTRONICALLY GENERATED DOCUMENT - DO NOT SCALE THIS PRINT			RFP	CAD FILE SS622157LE			SIZE	DRAWING NO.	PAGE OF
			DIST	CHINA			B	SS622157LE	REV.

```
ERROR: syntaxerror
OFFENDING COMMAND: --nostringval--

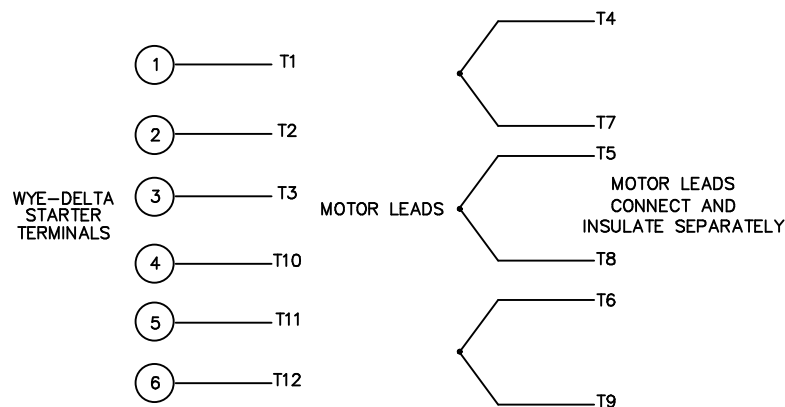
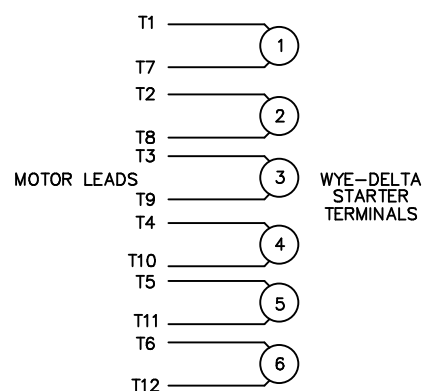
STACK:

-savelevel-
```

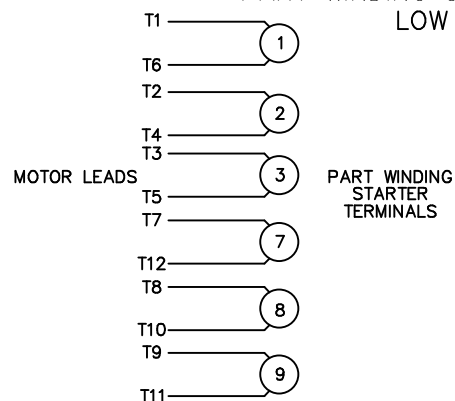
WYE - DELTA STARTING USEABLE ON 2,4 AND 6 POLE MOTORS.

LOW VOLTAGE CONNECTION

HIGH VOLTAGE CONNECTION



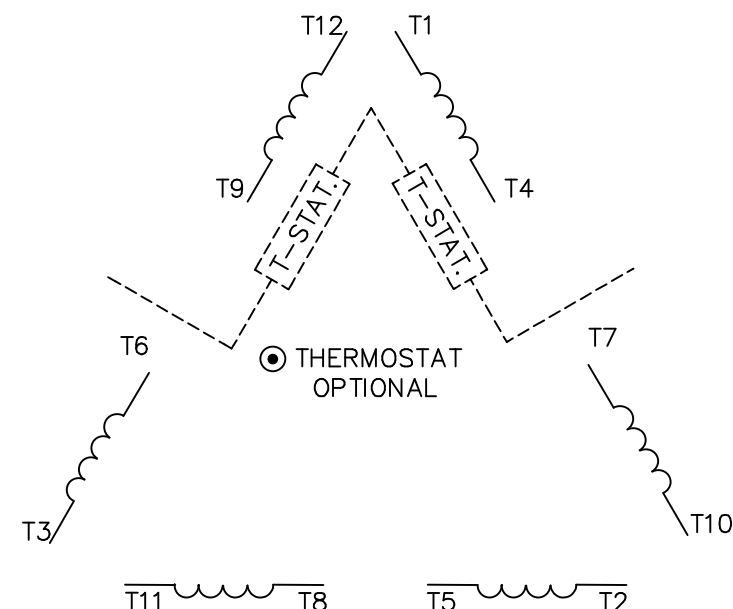
REFER TO THE WYE-DELTA STARTER CONNECTION INSTRUCTIONS FOR PROPER CONNECTION OF POWER LINES TO STARTER.

PART WINDING START USABLE ON 4 & 6 POLE MOTORS
LOW VOLTAGE CONNECTION ONLY

REFER TO THE PART WINDING STARTER INSTRUCTIONS FOR PROPER CONNECTION OF POWER LINES TO STARTER.

REFER TO THE CUTLER - HAMMER OR EQUIV. FOR PROPER SELECTION OF OVERLOAD HEATER COILS.

LINE LEADS



ROTATION CAN BE REVERSED BY INTERCHANGING ANY TWO LINE LEADS
 ● RED LEADS OR P1, P2, FOR N/C THERMOSTAT

ACROSS THE LINE START & RUN

	LINE 1	LINE 2	LINE 3	JOIN & INSULATE SEPARATELY
HIGH VOLT	T1,T12	T2,T10	T3,T11	(T4,T7) (T5,T8) (T6,T9)
LOW VOLT	T1,T6 T7,T12	T2,T4 T8,T10	T3,T5 T9,T11	

TOLERANCES
UNLESS SPECIFIED

DEC. INCHES

.X ±.1

.XX ±.01

.XXX ±.005

.XXXX ±.0005

ANG ±1/2"



ELECTRIC MOTORS
GEARMOTORS
AND DRIVES

DRAWN WLW 09/08/77

CHK RPB 09/12/77

APPD JCW 09/12/77

SCALE 1=1

REF

FMF

PREV

03 REV'D LOW VOLTAGE CONN. LEADS PER ELEC.

BJB 06/07/00

.XX ±.01

02 ADDED T-STAT. NOTES PER ELECTRICAL

KMM 06/02/98

.XXX ±.005

01 REDRAWN TO CAD

DBT 06/02/97

.XXXX ±.0005

NO. REVISION

BY & DATE

CHK

ANG

±1/2"

MAT'L.

FINISH

THIS DRAWING IN DESIGN AND DETAIL IS OUR PROPERTY AND MUST NOT BE USED EXCEPT IN CONNECTION WITH OUR WORK ALL RIGHTS OF DESIGN AND INVENTION ARE RESERVED THIS IS AN ELECTRONICALLY GENERATED DOCUMENT - DO NOT SCALE THIS PRINT

RFP

DIST

CAD FILE 00417201

SIZE

A

DRAWING NO.

004172-01

REV.

03