

PRODUCT INFORMATION PACKET



Model No: 160MTFC4543
Catalog No: 160MTFC4543
15,1800,TEFC,160M,3/60/230/460 PWS/YD

Regal and Marathon are trademarks of Regal Rexnord Corporation or one of its affiliated companies.
©2024 Regal Rexnord Corporation, All Rights Reserved. MC017097E



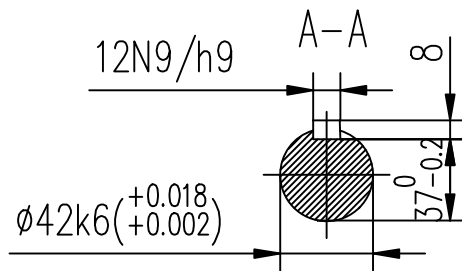
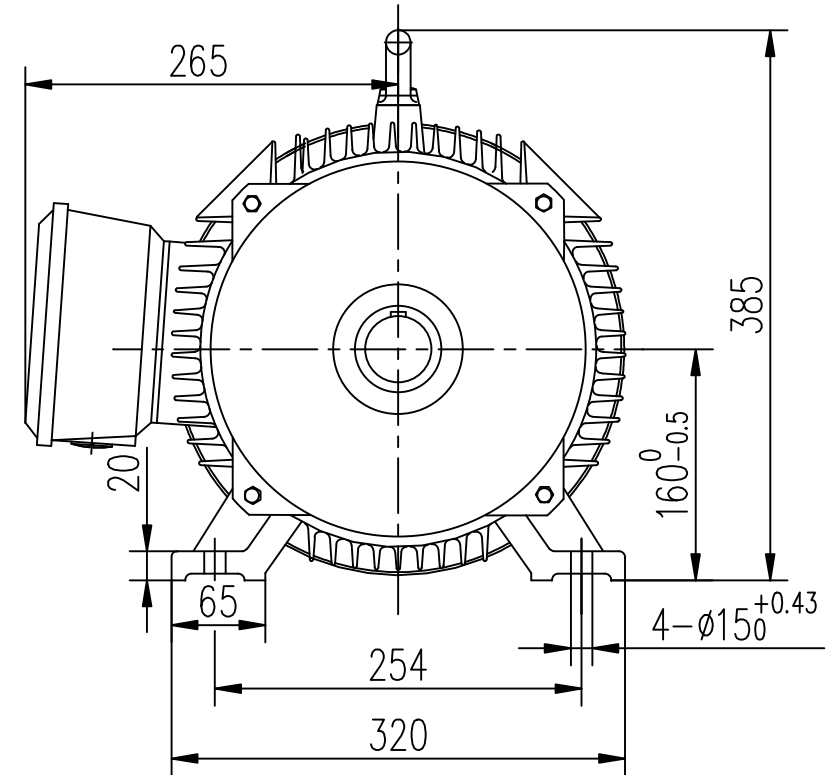
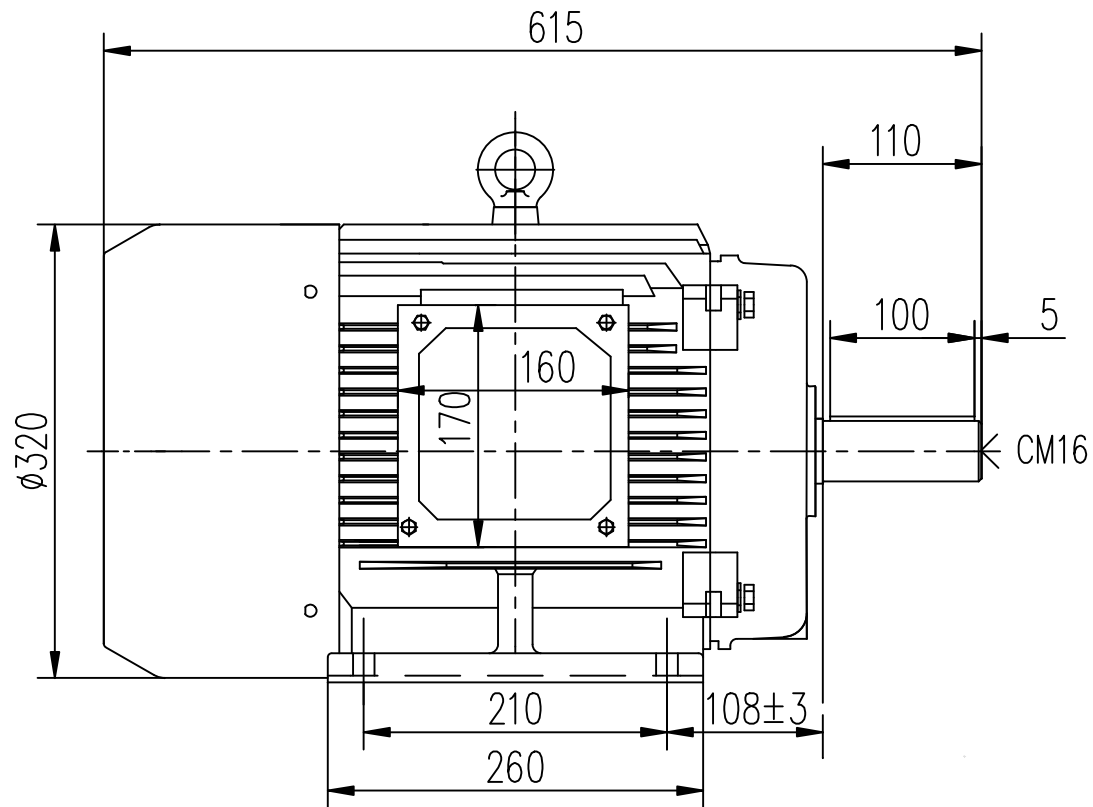
Nameplate Specifications


| | | | |
|------------------------|---------------|----------------------------|-----------------------------|
| Phase | 3 | Output HP | 15 Hp |
| Output KW | 11.2 kW | Voltage | 230/460 V |
| Speed | 1770 rpm | Service Factor | 1.15 |
| Frame | 160M | Enclosure | Totally Enclosed Fan Cooled |
| Thermal Protection | No Protection | Efficiency | 91 % |
| Ambient Temperature | 40 °C | Frequency | 60 Hz |
| Current | 36.5/18.3 A | Power Factor | 83 |
| Duty | Continuous | Insulation Class | F |
| Design Code | B | KVA Code | K |
| Drive End Bearing Size | 6309 | Opp Drive End Bearing Size | 6309 |
| UL | No | CSA | N |
| CE | Y | IP Code | 55 |
| Number of Speeds | 1 | | |

Technical Specifications

| | | | |
|-----------------------|------------------------------|-----------------------|--|
| Electrical Type | Squirrel Cage Inverter Rated | Starting Method | Part Wdg Start & Wye Start Delta Run Or Inverter |
| Poles | 4 | Rotation | Reversible |
| Resistance Main | .555 Ohms | Mounting | Rigid Base |
| Motor Orientation | Horizontal | Drive End Bearing | Ball |
| Opp Drive End Bearing | Ball | Frame Material | Cast Iron |
| Shaft Type | IEC | Assembly/Box Mounting | F1/F2 CAPABLE |
| Outline Drawing | B-SS620364 | Connection Drawing | A-EE7308AA |

This is an uncontrolled document once printed or downloaded and is subject to change without notice. Date Created:09/07/2024



| | | TOLERANCES UNLESS SPECIFIED | |  REGAL-BELOIT CORPORATION | DRAWN ZYH 04-01-2011 |
|---|----------|--------------------------------|--------------|---|----------------------|
| | | DEC. | METRIC | | CHK HZJ 04-01-2011 |
| | | .X | ±2.5 | | APPD CL 04-01-2011 |
| | | .XX | ±.76 | | SCALE |
| | | .XXX | ±.127 | | REF |
| | | .XXX | ±.0127 | MAT'L | FMF HWADA |
| NO. | REVISION | BY & DATE | CHK ANG ±1/2 | FINISH | PREV |
| THIS DRAWING IN DESIGN AND DETAIL IS OUR PROPERTY AND MUST NOT BE USED EXCEPT IN CONNECTION WITH OUR WORK ALL RIGHTS OF DESIGN AND INVENTION ARE RESERVED THIS IS AN ELECTRONICALLY GENERATED DOCUMENT - DO NOT SCALE THIS PRINT | | | RFP | CAD FILE SS620364 | SIZE B |
| | | | DIST | | DRAWING NO. SS620364 |
| | | | | | REV. |



LOW VOLTAGE




HIGH VOLTAGE



VIEW OF TERMINAL END

| | | |
|--|-----------------------|--------------------|
| DRAWING REVISION K | REVISION BY AJW | DATE 07-17-2015 |
| ECO ECO-0081632 | APPROVED BY T. VUE | DATE 07-17-2015 |
| ECO DESCRIPTION REV'D IEC MARKINGS PER IEC 60034-8 | | |
| COPYRIGHT REGAL BELOIT AMERICA, INC. ALL RIGHTS RESERVED. PROPRIETARY AND CONFIDENTIAL INFORMATION - THIS DOCUMENT IS THE PROPERTY OF REGAL BELOIT AMERICA, INC. ("OWNER") AND CONTAINS OWNER'S PROPRIETARY INFORMATION. ANY PERSON, CORPORATION OR OTHER FIRM RECEIVING IT IS DEEMED, BY RECEIVING IT, TO AGREE THAT IT, AND/OR ANY PART OF IT, SHALL NOT BE DISCLOSED TO ANY PERSON, CORPORATION OR OTHER ENTITY, DUPLICATED, AND/OR USED, EXCEPT AS EXPRESSLY APPROVED IN WRITING IN ADVANCE BY OWNER. THIS DOCUMENT SHALL BE RETURNED TO OWNER UPON REQUEST. IT MAY BE SUBJECT TO CERTAIN RESTRICTIONS UNDER APPLICABLE EXPORT CONTROL LAWS AND REGULATIONS. | | |

| | |
|--------------------|---------------------------|
| DRAWN BY LZ | THIRD ANGLE PROJECTION |
| DATE 01-12-1994 | |
| APPROVED BY GK | |
| DATE 01-14-1994 | |
| REFERENCE | |

| | | |
|--|----------------------------|-----------------|
|  Regal Beloit America, Inc. | | |
| DESCRIPTION CONN DIAGRAM-EXTERNAL 3Ø-2/1 DELTA-12 LEADS | | |
| MATERIAL | PROCESS/FINISH | |
| SIZE A | DRAWING NUMBER EE7308AA | SHEET 1 OF 1 |