

PRODUCT INFORMATION PACKET

Model No: 160LTFC4588

Catalog No: R335

Cast Iron Motor, 15 & 15 HP, 3 Ph, 60 & 50 Hz, 230/460 & 200/400 V, 1200 & 1000 RPM, 160L Frame, TEFC



Regal and Marathon are trademarks of Regal Rexnord Corporation or one of its affiliated companies.

©2023 Regal Rexnord Corporation, All Rights Reserved. MC017097E

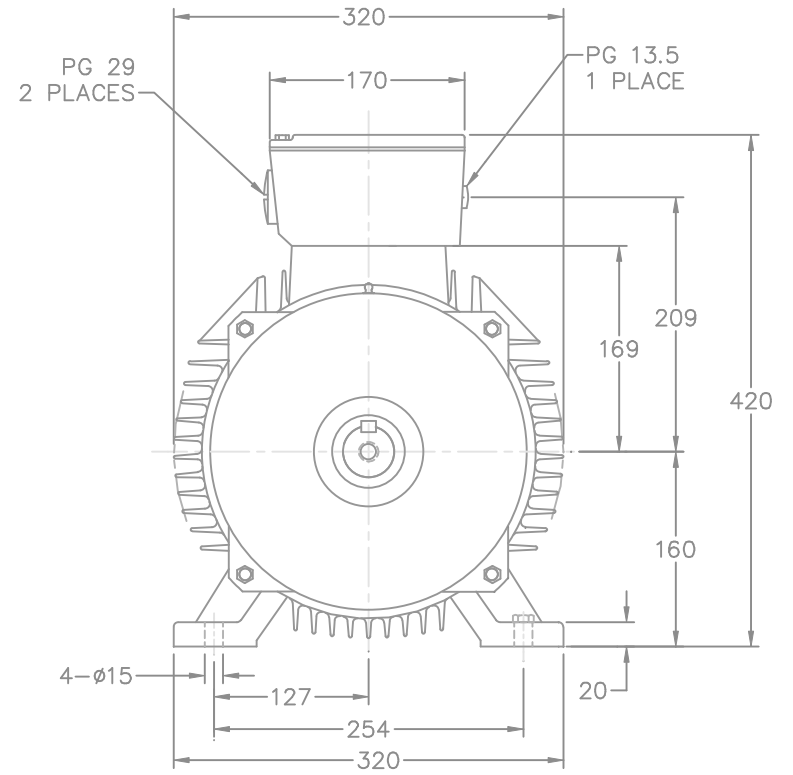
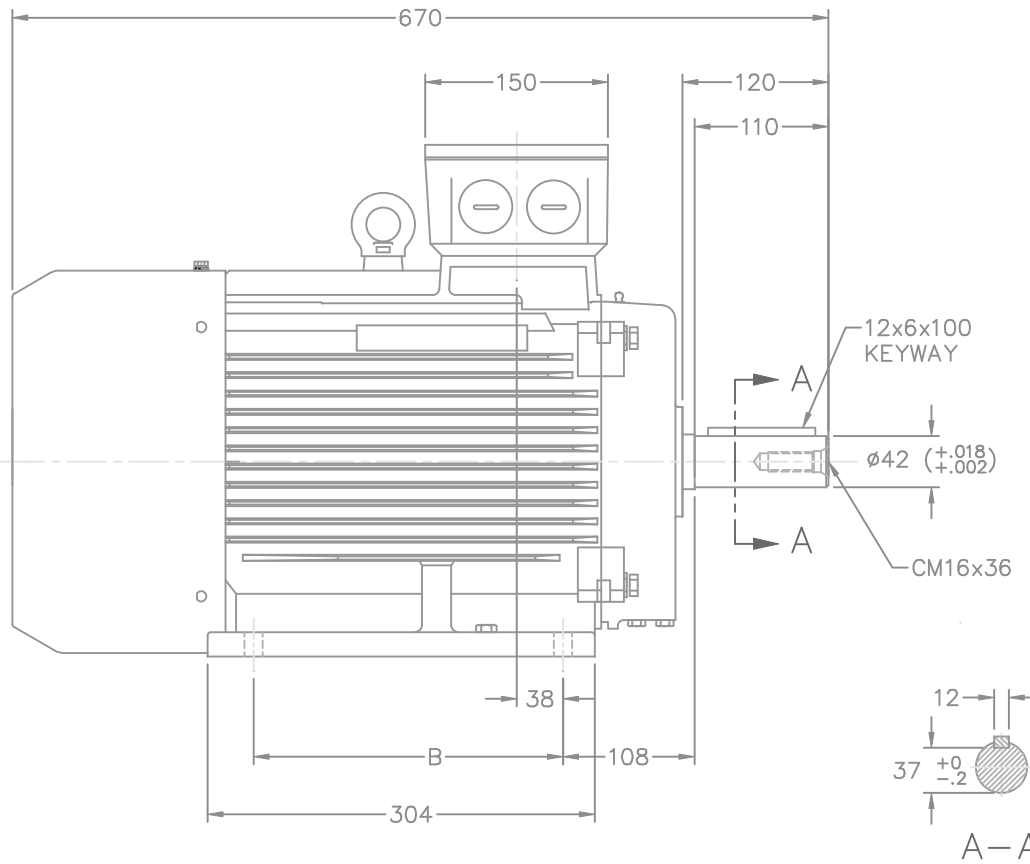


Nameplate Specifications

Phase	3	Output HP	15 & 15 Hp
Output KW	11.2 & 11.2 kW	Voltage	230/460 & 200/400 V
Speed	1180 & 975 rpm	Service Factor	1.15 & 1.15
Frame	160L	Enclosure	Totally Enclosed Fan Cooled
Thermal Protection	No Protection	Efficiency	90.2 & 88.5 %
Ambient Temperature	40 °C	Frequency	60 & 50 Hz
Current	43/21.5 & 49.5/24.7 A	Power Factor	72
Duty	Continuous	Insulation Class	F
Design Code	B	KVA Code	J
Drive End Bearing Size	6309	Opp Drive End Bearing Size	6309
UL	No	CSA	Y
CE	Y	IP Code	55
Number of Speeds	1		

Technical Specifications

Electrical Type	Squirrel Cage Inverter Rated	Starting Method	Part Wdg Start & Wye Start Delta Run Or Inverter
Poles	6	Rotation	Reversible
Resistance Main	.44 Ohms	Mounting	Rigid Base
Motor Orientation	Horizontal Or Shaft Down	Drive End Bearing	Ball
Opp Drive End Bearing	Ball	Frame Material	Cast Iron
Shaft Type	IEC	Overall Length	26.37 in
Shaft Diameter	1.666 in	Shaft Extension	4.72 in
Assembly/Box Mounting	F3		
Connection Drawing	00417203ME	Outline Drawing	B-SS620001-160L



ALL DIMENSIONS TO BE REF. DIMENSION.

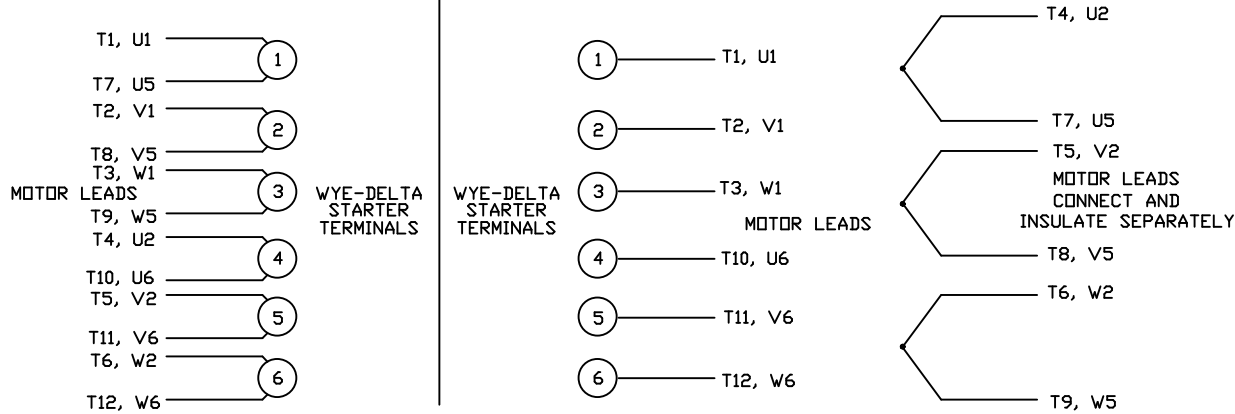
FRAME	B	
160M	210	
160L	254	

		TOLERANCES UNLESS SPECIFIED				DRAWN CTO 10-01-2004	
		DEC.	METRIC			CHK ML 10-04-2004	
		.X	±2.5	TITLE OUTLINE - IEC		APPD SB 10-04-2004	
		.XX	±.76	160 FR.		SCALE 1=4	
		.XXX	±.127	MAT'L		REF	
		.XXXX	±.0127	FINISH		FMF	
NO.	REVISION	BY & DATE	CHK	ANG ±7'30"	PREV		
THIS DRAWING IN DESIGN AND DETAIL IS OUR PROPERTY AND MUST NOT BE USED EXCEPT IN CONNECTION WITH OUR WORK ALL RIGHTS OF DESIGN AND INVENTION ARE RESERVED THIS IS AN ELECTRONICALLY GENERATED DOCUMENT - DO NOT SCALE THIS PRINT				RFP 10-05-2004	CAD FILE ss620001	SIZE B	DRAWING NO. SS620001
				DIST WA		PAGE OF	REV.

WYE - DELTA STARTING USEABLE ON 2,4 AND 6 POLE MOTORS.

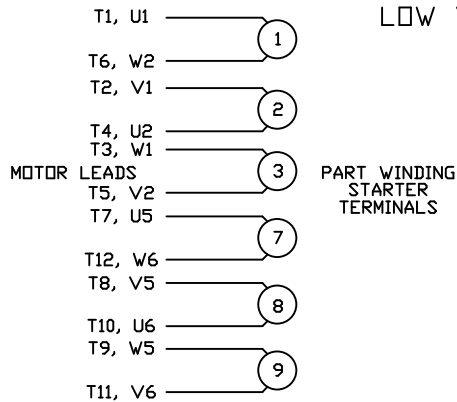
LOW VOLTAGE CONNECTION

HIGH VOLTAGE CONNECTION



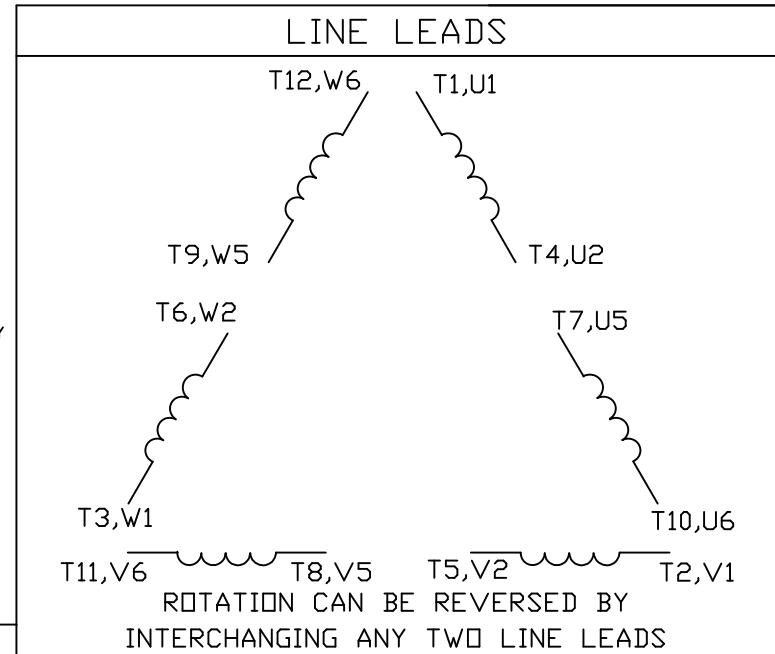
REFER TO THE WYE-DELTA STARTER CONNECTION INSTRUCTIONS FOR PROPER CONNECTION OF POWER LINES TO STARTER.

PART WINDING START USABLE ON 4 & 6 POLE MOTORS
LOW VOLTAGE CONNECTION ONLY



REFER TO THE PART WINDING STARTER INSTRUCTIONS FOR PROPER CONNECTION OF POWER LINES TO STARTER.

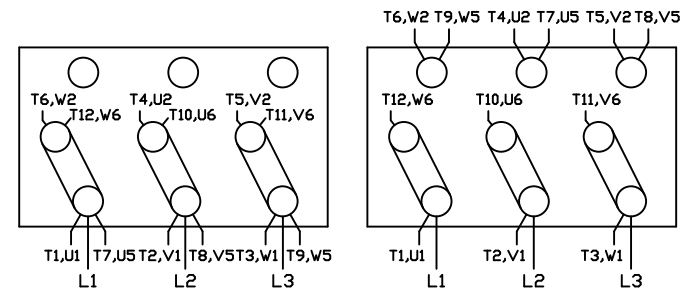
REFER TO THE CUTLER - HAMMER OR EQUIV. FOR PROPER SELECTION OF OVERLOAD HEATER COILS.



12 LEAD DELTA CONNECTION ACROSS THE LINE START
(FOR Y START DELTA RUN, REMOVE THE JUMPERS)

LOW VOLTAGE
(MUST BE REWIRED AS SHOWN)

HIGH VOLTAGE
(FACTORY WIRED FOR HIGH VOLTAGE AS SHOWN)



TOLERANCES UNLESS SPECIFIED

DEC. INCHES

.X ±.1

.XX ±.01

.XXX ±.005

.XXXX ±.0005

ANG ±1/2*



TITLE DELTA - WYE CONNECTION DIAGRAM
IEC CAST IRON MOTORS

MAT'L.

FINISH

DRAWN CJW 08/28/02

CHK

APPD

SCALE 1=1

REF

FMF

PREV

NO. REVISION BY & DATE

THIS DRAWING IN DESIGN AND DETAIL IS OUR PROPERTY AND MUST NOT BE USED EXCEPT IN CONNECTION WITH OUR WORK ALL RIGHTS OF DESIGN AND INVENTION ARE RESERVED THIS IS AN ELECTRONICALLY GENERATED DOCUMENT - DO NOT SCALE THIS PRINT

RFP

DIST

CAD FILE 00417203ME

SIZE DRAWING NO.

A 004172-03ME

REV.



P.O. BOX 8003
WAUSAU, WI 54401-8003
PH. 715-675-3311

DATA VOLTS: 460

CERTIFICATION DATA SHEET

CUSTOMER: _____ **CUSTOMER P.O. #:** _____
ORDER #: _____ **REFERENCE MODEL #:** 160LTFC4588
CONN. DIAGRAM: 00417203ME **CAT #:** R335
OUTLINE: B-SS620001-160L **CUSTOMER PART #:** _____
WINDING: 160LTFC4588 NONE 1 **MOUNTING:** F3
SPEED: _____

TYPICAL MOTOR PERFORMANCE DATA

HP	KW	SYNC RPM	FL RPM	FRAME	ENCLOSURE	TYPE	KVA CODE	DESIGN
15	11.2	1200	1180	160L	TEFC	TFC	J	N

PH	HZ	VOLTS	AMPS	START TYPE	DUTY	INSL	S.F.	AMB	ELEV.
3	60/50	230/460#200/400	43/21.5&49.5/24.7	PWS & YDRUN OR INV	CONT	F	1.15	40	3300

F.L. EFF	90.2	3/4 LD EFF	90.2	1/2 LD EFF	89.5	GTD EFF	89.5	ELECT. TYPE	SQ CAGE INV RATED
F.L. PF	72.0	3/4 LD PF	65.5	1/2 LD PF	55.5				

F.L. TORQUE	LR AMPS @ 460 V	L.R. TORQUE	B.D. TORQUE	F.L. RISE (°C)
67.0 LB-FT	145	170 LB-FT 254%	210 LB-FT 313%	70

@ 3 FT.	POWER	ROTOR WK ²	MAX. LOAD WK ²	SAFE STALL TIME	STARTS/HOUR	MOTOR WGT
50 dBA	59 dBA	0.00 LB-FT ²	0 LB-FT ²	0 SEC.	0	330 LB.

***** SUPPLEMENTAL INFORMATION *****

DE BRACKET TYPE	ODE BRACKET TYPE	MOUNT TYPE	MOTOR ORIENTATION	SEVERE DUTY	HAZARDOUS LOCATION	DRIP COVER	SCREENS	PAINT
STANDARD	STANDARD	RIGID	ZONTAL OR SHAFT D	TRUE	NONE	NO	NONE	VERIFY

BEARINGS		GREASE	SHAFT TYPE	SPECIAL DE	SPECIAL ODE	SHAFT MATERIAL	FRAME MATERIAL
DE	ODE						
BALL	BALL	VERIFY	STANDARD IEC	NONE	NONE	VERIFY	CAST IRON
6309	6309						

THERMOSTATS	PROTECTORS	WDG RTD's	BRG RTD's	THERMISTORS	CONTROL	SPACE HEATERS
NONE	NOT	NONE	NONE	NONE	FALSE	NA

R1 (ohms/ph)	R2 (ohms/ph)	X1 (ohms/ph)	X2 (ohms/ph)	Xm (ohms/ph)	VIBRATION (in/sec)	FLOAT
0	0	0	0	0	0.150	ODE

* N O T E S *	INVERTER TORQUE: CONSTANT 2:1 INV. HP SPEED RANGE: 1.5 X BASE SPEED					
	ENCODER: NONE NONE NONE NONE PPR					

PREPARED BY: EARL BABBITTS DATE: 5/5/2017	BRAKE: NONE NONE NONE FT-LB: NA VOLTAGE: NONE HZ: UL: NONE
--	---

FORM: 3531 REV_4 2/27/06

Data Sheet

Date: 5/5/2017
 Customer: _____
 Attention: _____
 Submitted by: EARL BABBITTS



160LTC4588

Submittal

Data @ 460 V

Motor Load Data

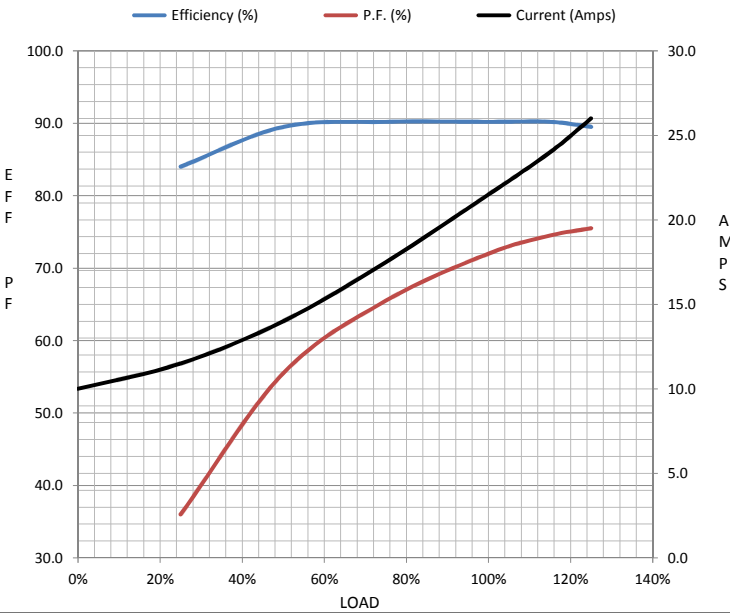
Load	0%	25%	50%	75%	100%	115%	125%	LR
Current (Amps)	10.0	11.5	14.0	17.5	21.5	24.0	26.0	145
Torque (ft-lb)	0.00	16.5	33.0	50.0	67.0	77.5	84.3	170
RPM	1200	1195	1190	1185	1180	1,175	1170	0
Efficiency (%)		84.0	89.5	90.2	90.2	90.2	89.5	
P.F. (%)	5.5	36.0	55.5	65.5	72.0	74.5	75.5	40.0

Motor Speed Data

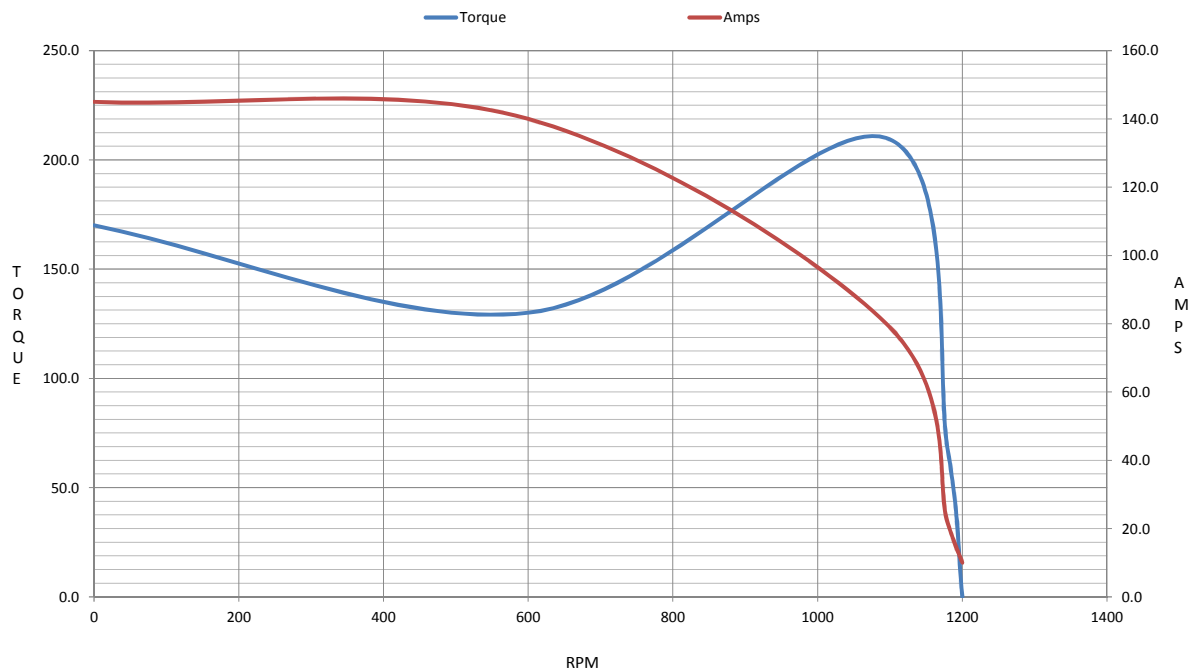
	LR	Pull-Up	BD	Rated	Idle
Speed (RPM)	0	600	1095	1180	1200
Current (Amps)	145	140	80.0	21.5	10.0
Torque (ft-lb)	170	130	210	67.0	0.00


Information Block

HP	15.0			
Sync. RPM	1200			
Frame	160			
Enclosure	TEFC			
Construction	TFC			
Voltage	30/460#200/40V			
Frequency	60 Hz			
Design	A			
LR Code letter	J			
Service Factor	1.15			
Temp Rise @ FL	70 °C			
Duty	CONT			
Ambient	40 °C			
Elevation	1,000 feet			
Rotor/Shaft wk ²	0.00 Lb-Ft ²			
Ref Wdg	160LTC4588 NONE			
Sound Pressure @ 1M	50 dBA			
VFD Rating	CONSTANT 2:1			
Outline Dwg	B-SS620001-160L			
Conn. Diag	00417203ME			
Additional Specifications:				
0				
0				
EQUIV CKT (OHMS / PHASE)				
R1	R2	X1	X2	Xm
0.0000	0.0000	0.0000	0.0000	0.0000

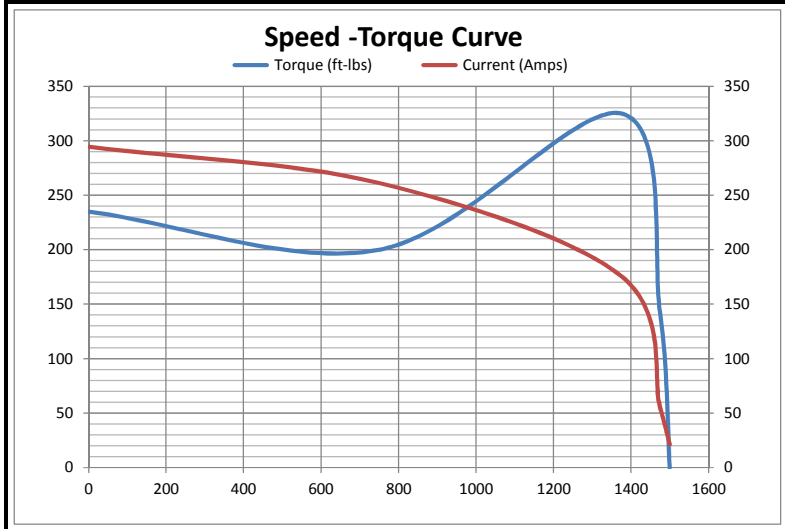


Speed - Torque Curve



Date:	5/5/2017		REF:	160LTFC4588		
Customer:				Torque Capability Curve		
Attention:				Data @	460	Volts
Submitted by:	EARL BABBITTS					
	Min CT	RPM	Base RPM	CHP	RPM	Max CHP RPM
HP	0.00	0.0	15	15	15	125
Voltage (volts)	-	222	460	460	460	460
Frequency (HZ)	0	29	60	90	91	134
RPM	0	580	1,180	1,800	1,800	2,682
Current (Amps)	15.8	21.5	21.5	21.5	21.5	179
Rated Tq (ft-lb)	33.5	67.0	67.0	43.9	43.9	245
Peak Tq (ft-lb)	193	193	193	79.6	79.6	34.5

Motor Speed Data						Information Block	
	Locked Rotor	Pull-Up	Breakdown	Rated Load	Idle		
Speed (RPM)	0	750	1375	1475	1500	HP	15.0
Current (Amps)	295	261	176	55.1	21.4	Sync. RPM	1,200
Torque (ft-lbs)	235	200	325	142	0.00	Frame	160
						Enclosure	TEFC
						Construction	TFC
						Voltage	230/460#200/400
						Frequency	60 Hz
						Duty	CONT
						Design	A
						LR Code letter	J
						Poles	6
						Temp Rise @ FL	70 °C
						Ambient	40 °C
						Elevation	1,000 feet
						Ref Wdg	160LTFC4588
						R #	NONE
						dBA @ 1M	50
						VFD rating	CONSTANT 2:1
						OUTLINE:	B-SS620001-160L
						CONN DIAG:	00417203ME
							0
							0



HP	15.0
Sync. RPM	1,200
Frame	160
Enclosure	TEFC
Construction	TFC
Voltage	230/460#200/400
Frequency	60 Hz
Duty	CONT
Design	A
LR Code letter	J
Poles	6
Temp Rise @ FL	70 °C
Ambient	40 °C
Elevation	1,000 feet
Ref Wdg	160LTFC4588
R #	NONE
dBA @ 1M	50
VFD rating	CONSTANT 2:1
OUTLINE:	B-SS620001-160L
CONN DIAG:	00417203ME
	0
	0

