

PRODUCT INFORMATION PACKET



Model No: 145TTFBD6095
Catalog No: GT3502A
Globetrotter® Close-Coupled Pump Motor

Regal and Marathon are trademarks of Regal Rexnord Corporation or one of its affiliated companies.
©2022 Regal Rexnord Corporation, All Rights Reserved. MC017097E



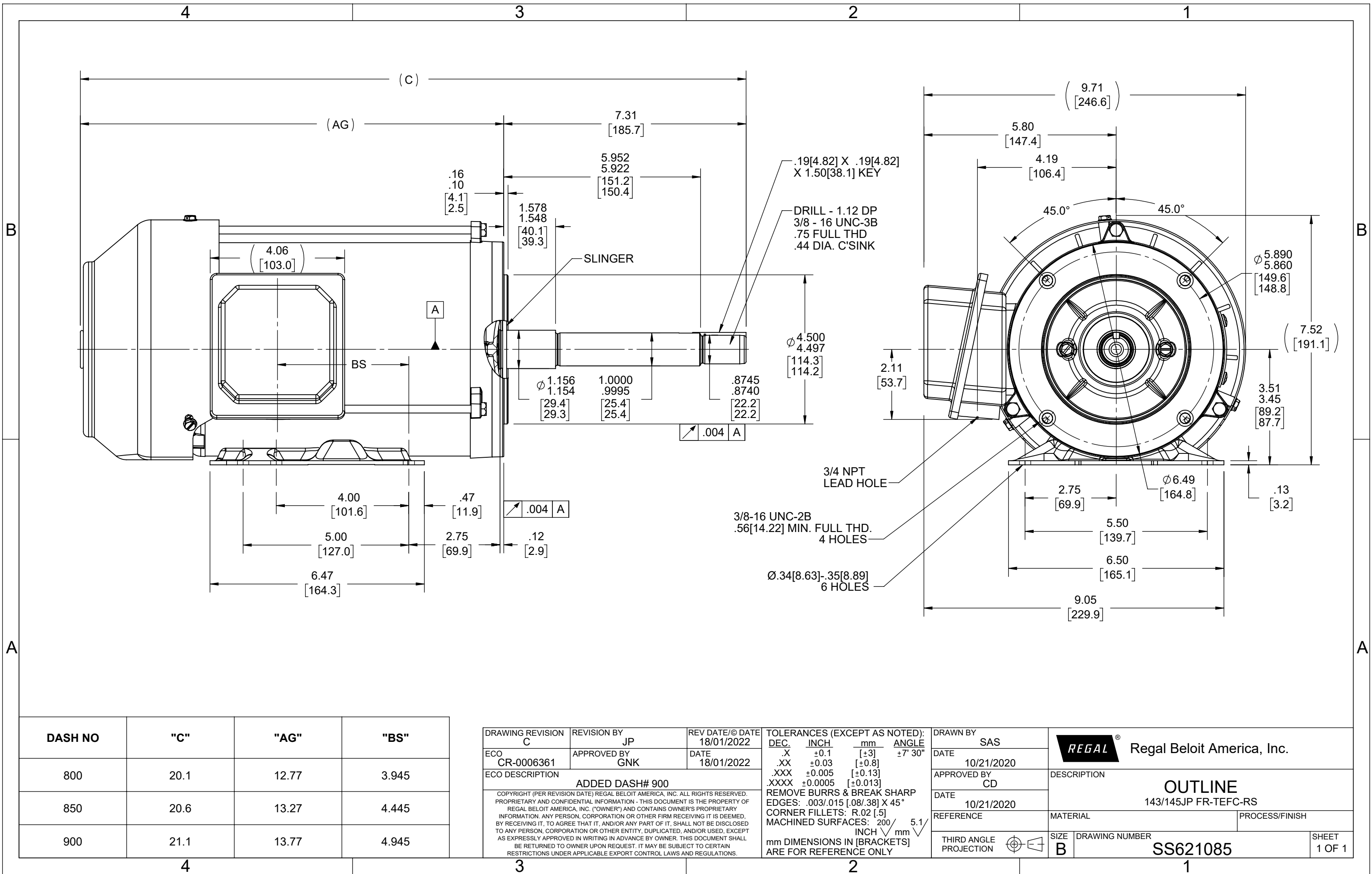


Nameplate Specifications

Technical Specifications

| | | | |
|--------------------|--------|-----------------|--------------|
| Connection Drawing | EE7300 | Outline Drawing | SS621085-850 |
|--------------------|--------|-----------------|--------------|

This is an uncontrolled document once printed or downloaded and is subject to change without notice. Date Created:11/30/2022



| DASH NO | "C" | "AG" | "BS" |
|---------|------|-------|-------|
| 800 | 20.1 | 12.77 | 3.945 |
| 850 | 20.6 | 13.27 | 4.445 |
| 900 | 21.1 | 13.77 | 4.945 |

| | | |
|--|--------------------|-------------------------------|
| DRAWING REVISION C | REVISION BY JP | REV DATE/© DATE 18/01/2022 |
| ECO CR-0006361 | APPROVED BY GNK | DATE 18/01/2022 |
| ECO DESCRIPTION ADDED DASH# 900 | | |
| COPYRIGHT (PER REVISION DATE) REGAL BELOIT AMERICA, INC. ALL RIGHTS RESERVED. PROPRIETARY AND CONFIDENTIAL INFORMATION - THIS DOCUMENT IS THE PROPERTY OF REGAL BELOIT AMERICA, INC. ("OWNER") AND CONTAINS OWNER'S PROPRIETARY INFORMATION. ANY PERSON, CORPORATION OR OTHER FIRM RECEIVING IT IS DEEMED, BY RECEIVING IT, TO AGREE THAT IT, AND/OR ANY PART OF IT, SHALL NOT BE DISCLOSED TO ANY PERSON, CORPORATION OR OTHER ENTITY, DUPLICATED, AND/OR USED, EXCEPT AS EXPRESSLY APPROVED IN WRITING IN ADVANCE BY OWNER. THIS DOCUMENT SHALL BE RETURNED TO OWNER UPON REQUEST. IT MAY BE SUBJECT TO CERTAIN RESTRICTIONS UNDER APPLICABLE EXPORT CONTROL LAWS AND REGULATIONS. | | |

| | | | |
|--|---------|----------|---------|
| TOLERANCES (EXCEPT AS NOTED): | | | |
| DEC. | INCH | mm | ANGLE |
| .X | ±0.1 | [±3] | ±7° 30" |
| .XX | ±0.03 | [±0.8] | |
| .XXX | ±0.005 | [±0.13] | |
| .XXXX | ±0.0005 | [±0.013] | |
| REMOVE BURRS & BREAK SHARP EDGES: .003/.015 [0.08/.38] X 45° | | | |
| CORNER FILLETS: R.02 [.5] | | | |
| MACHINED SURFACES: 200 INCH/mm 5.1 | | | |
| mm DIMENSIONS IN [BRACKETS] ARE FOR REFERENCE ONLY | | | |

| | |
|------------------------|--------------------|
| DRAWN BY SAS | DATE 10/21/2020 |
| APPROVED BY CD | DATE 10/21/2020 |
| REFERENCE | |
| THIRD ANGLE PROJECTION | |

| | |
|--|----------------------------|
| REGAL® Regal Beloit America, Inc. | |
| DESCRIPTION OUTLINE 143/145JP FR-TEFC-RS | |
| MATERIAL | PROCESS/FINISH |
| SIZE B | DRAWING NUMBER SS621085 |
| SHEET 1 OF 1 | |

THREE PHASE - SINGLE VOLTAGE
MOTOR - CONDUIT BOX @ 'A'

TO REVERSE ROTATION:
INTERCHANGE ANY TWO LINE
LEAD CONNECTIONS

TERMINAL BLOCK WHEN SPECIFIED

IF MOTOR HAS 9 LEADS

T1(U1) T1(U1) T1(U1) → L1

T2(V1) T2(V1) T2(V1) → L2

T3(W1) T3(W1) T3(W1) → L3

IF MOTOR HAS 6 LEADS

T1(U1) T1(U1) → L1

T2(V1) T2(V1) → L2

T3(W1) T3(W1) → L3

A-9806 DECAL




| OPTIONAL CORD CONNECTION | |
|--------------------------|-------|
| L1 | WHITE |
| L2 | RED |
| L3 | BLACK |

| | | |
|--|-------------------|-------------------------------|
| DRAWING REVISION AC | REVISION BY BS | REV DATE/© DATE 26/07/2022 |
| REQUEST NUMBER CR-0010402 | APPROVED BY SN | DATE 26/07/2022 |
| REQUEST NUMBER DESCRIPTION DRAWING UPDATED | | |
| COPYRIGHT (PER REVISION DATE) REGAL BELOIT AMERICA, INC. ALL RIGHTS RESERVED. PROPRIETARY AND CONFIDENTIAL INFORMATION - THIS DOCUMENT IS THE PROPERTY OF REGAL BELOIT AMERICA, INC. ("OWNER") AND CONTAINS OWNER'S PROPRIETARY INFORMATION. ANY PERSON, CORPORATION OR OTHER FIRM RECEIVING IT IS DEEMED, BY RECEIVING IT, TO AGREE THAT IT, AND/OR ANY PART OF IT, SHALL NOT BE DISCLOSED TO ANY PERSON, CORPORATION OR OTHER ENTITY, DUPLICATED, AND/OR USED, EXCEPT AS EXPRESSLY APPROVED IN WRITING IN ADVANCE BY OWNER. THIS DOCUMENT SHALL BE RETURNED TO OWNER UPON REQUEST. IT MAY BE SUBJECT TO CERTAIN RESTRICTIONS UNDER APPLICABLE EXPORT CONTROL LAWS AND REGULATIONS. | | |

PRIMARY DIMENSIONS ARE INCH
mm DIMENSIONS IN [BRACKETS]
ARE FOR REFERENCE ONLY

| |
|---------------------------|
| DRAWN BY DA |
| DATE 03-26-1993 |
| APPROVED BY TB |
| DATE 03-26-1993 |
| REFERENCE |
| THIRD ANGLE PROJECTION |

| | |
|--|--------------------------|
|  Regal Beloit America, Inc. | |
| DESCRIPTION CONNECTION DIAGRAM EXTERNAL - SINGLE VOLTAGE - 3Ø MOTOR | |
| MATERIAL | PROCESS/FINISH |
| SIZE A | DRAWING NUMBER EE7300 |
| SHEET 1 OF 1 | |