

# PRODUCT INFORMATION PACKET

marathon®  
Motors

Model No: 100LTFC6536

Catalog No: R352A

Globetrotter® IEC Cast Iron Motor, 4 & 3 HP, 3 Ph, 60 & 50 Hz, 230/460 & 200/400 V, 1800 & 1500 RPM,  
100L Frame, TEFC



Regal and Marathon are trademarks of Regal Rexnord Corporation or one of its affiliated companies.

©2023 Regal Rexnord Corporation, All Rights Reserved. MC017097E

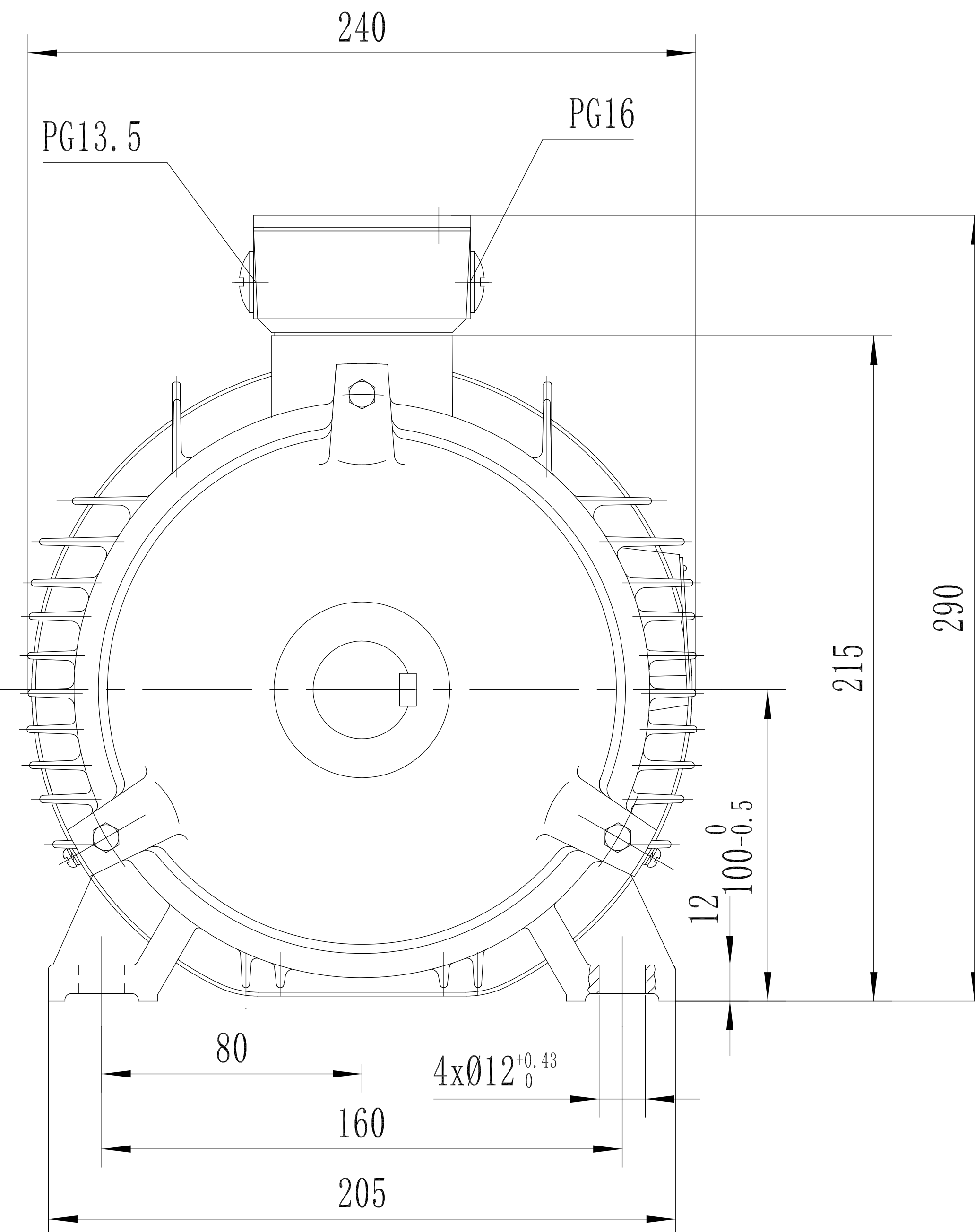
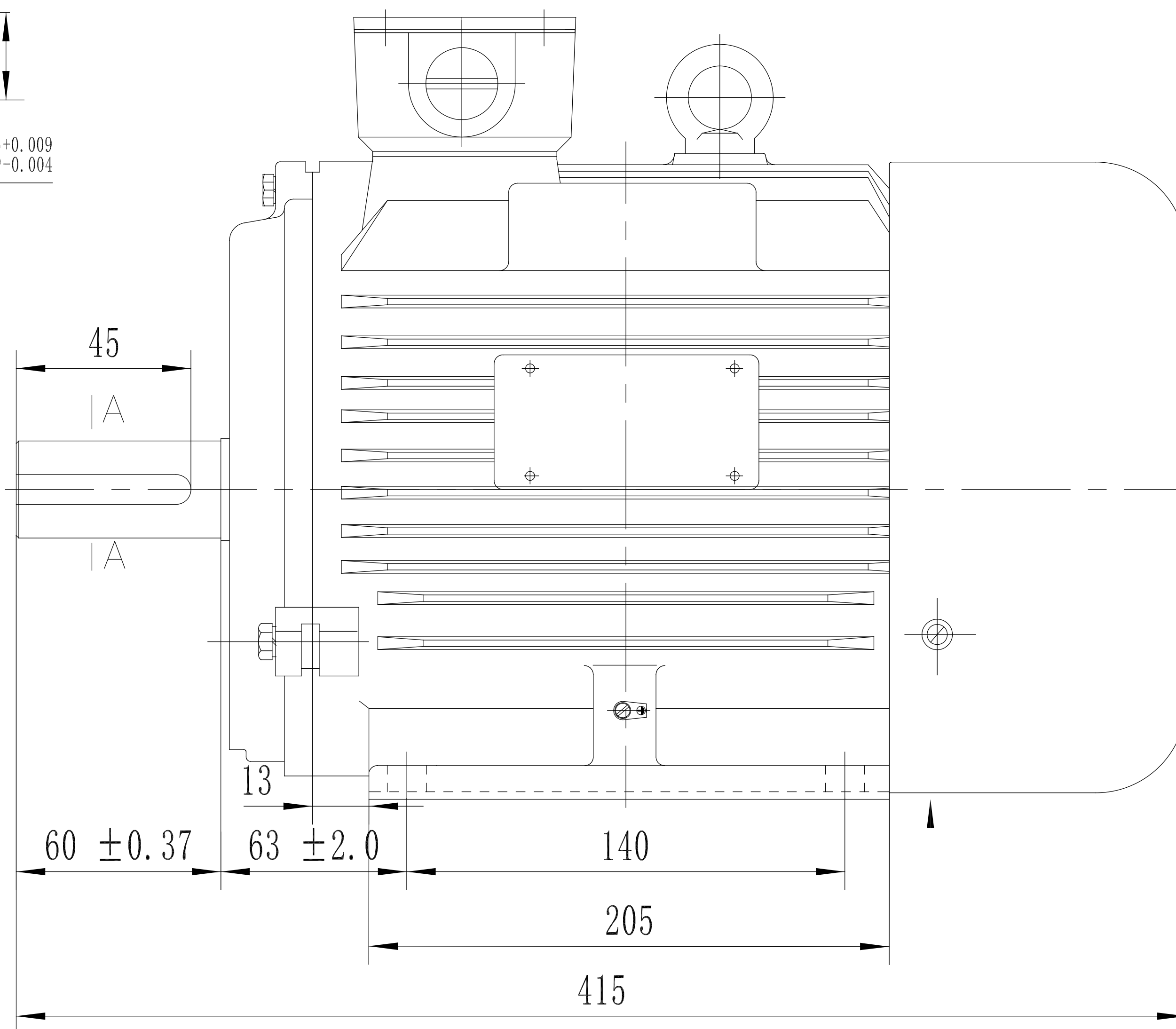
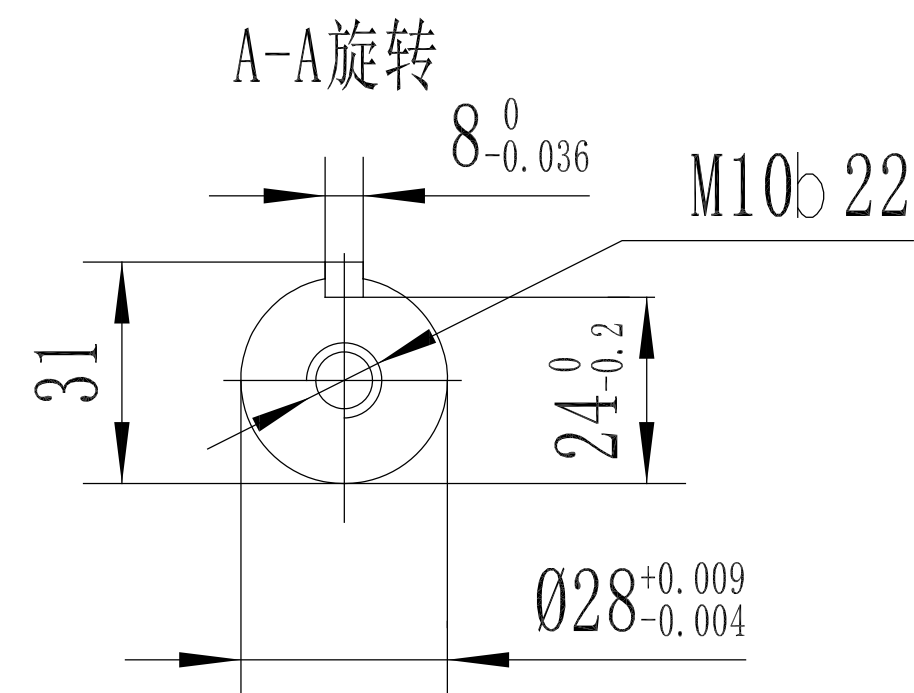
RegalRexnord

### Nameplate Specifications

Phase	<b>3</b>	Output HP	<b>4 &amp; 3 Hp</b>
Output KW	<b>3.0 &amp; 2.2 kW</b>	Voltage	<b>230/460 &amp; 200/400 V</b>
Speed	<b>1760 &amp; 1465 rpm</b>	Service Factor	<b>1.15 &amp; 1.15</b>
Frame	<b>100L</b>	Enclosure	<b>Totally Enclosed Fan Cooled</b>
Thermal Protection	<b>No Protection</b>	Efficiency	<b>89.5 &amp; 88.5 %</b>
Ambient Temperature	<b>40 °C</b>	Frequency	<b>60 &amp; 50 Hz</b>
Current	<b>10/5 &amp; 9.2/4.6 A</b>	Power Factor	<b>81.5</b>
Duty	<b>Continuous</b>	Insulation Class	<b>F</b>
Design Code	<b>B</b>	KVA Code	<b>J</b>
Drive End Bearing Size	<b>6206</b>	Opp Drive End Bearing Size	<b>6205</b>
UL	<b>No</b>	CSA	<b>Y</b>
CE	<b>Y</b>	IP Code	<b>54</b>
Number of Speeds	<b>1</b>		

### Technical Specifications

Electrical Type	<b>Squirrel Cage Inverter Rated</b>	Starting Method	<b>Line Or Inverter</b>
Poles	<b>4</b>	Rotation	<b>Reversible</b>
Resistance Main	<b>2.42 Ohms</b>	Mounting	<b>Rigid Base</b>
Motor Orientation	<b>Horizontal</b>	Drive End Bearing	<b>Ball</b>
Opp Drive End Bearing	<b>Ball</b>	Frame Material	<b>Cast Iron</b>
Shaft Type	<b>IEC</b>	Overall Length	<b>16.33 in</b>
Shaft Diameter	<b>1.111 in</b>	Shaft Extension	<b>2.36 in</b>
Assembly/Box Mounting	<b>F3</b>		
Outline Drawing	<b>B-SS622236-DF100L1-4R</b>	Connection Drawing	<b>005010.01</b>



DF100L-2R	193303.60
DF100L1-4R	193301.60
DF100L2-4R	193304.60
DF100L-6R	193300.60
FRAME	PART #

NO.	REVISION	BY & DATE	CHK	ANG	TOLERANCES UNLESS SPECIFIED		TITLE	DRAWN	
					DEC.	INCHES			
					.X	±.1	Regal-Beloit Corporation OUTLINE	CHK	
					.XX	±.03		APPD	
					.XXX	±.005		SCALE	
					.XXXX	±.0005		REF	
								FMF	
							FINISH	PREV	
THIS DRAWING IN DESIGN AND DETAIL IS OUR PROPERTY AND MUST NOT BE USED EXCEPT IN CONNECTION WITH OUR WORK ALL RIGHTS OF DESIGN AND INVENTION ARE RESERVED THIS IS AN ELECTRONICALLY GENERATED DOCUMENT - DO NOT SCALE THIS PRINT					RFP	CAD FILE	SIZE	DRAWING NO.	REV.
					DIST		B	SS622236	

005010-01

VIEW FROM OUTSIDE OF MOTOR AT SWITCH END.



VOLTAGE	L1	L2	L3	JOIN & INSULATE
HIGH	T1	T2	T3	(T4,T7) (T5,T8) (T6,T9)
LOW	T1,T7	T2,T8	T3,T9	T4,T5,T6

		TOLERANCES UNLESS SPECIFIED		TITLE	DRAWN RDW 04/12/02			
		DEC.	INCHES					
		.X	±.1	<b>Regal Beloit America, Inc.</b>	CHK			
		.XX	±.01		APPD			
		.XXX	±.005		SCALE 1=1			
		.XXXX	±.0005		REF FIG.2-51			
A	UPDATED TO REGAL LOGO	SAJ 06/26/15	AJY .XXXX ±.0005	MAT'L. DECAL - 004014	FMF			
NO.	REVISION	BY & DATE	CHK ANG ±1/2"	FINISH	PREV			
THIS DRAWING IN DESIGN AND DETAIL IS OUR PROPERTY AND MUST NOT BE USED EXCEPT IN CONNECTION WITH OUR WORK ALL RIGHTS OF DESIGN AND INVENTION ARE RESERVED THIS IS AN ELECTRONICALLY GENERATED DOCUMENT - DO NOT SCALE THIS PRINT				RFP 04/12/02	CAD FILE 00501001	SIZE A	DRAWING NO. 005010-01	REV. A
				DIST BRF-NLV				



Data Sheet

Date: 6/29/2017

Customer: \_\_\_\_\_

Attention: \_\_\_\_\_

Submitted by: FAREEDA DUDEKULA



100LTC6536

Submittal

Data @ 460 V

Motor Load Data

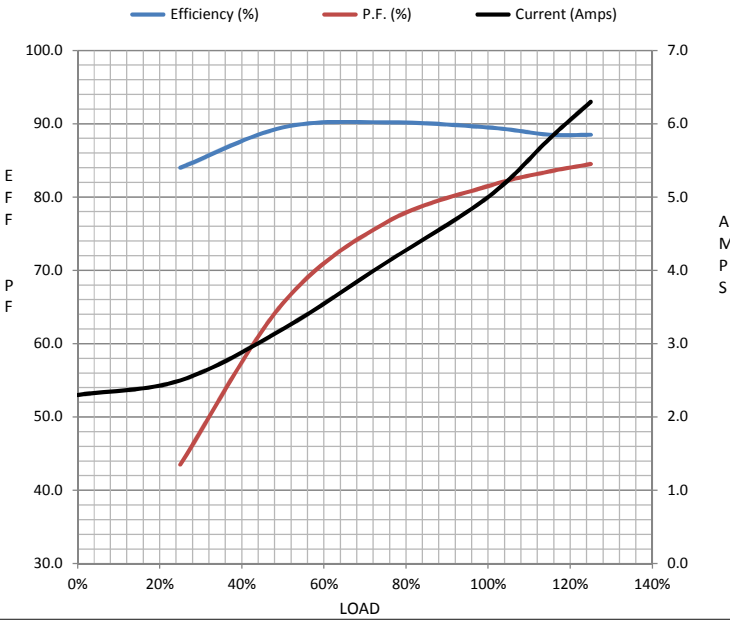
Load	0%	25%	50%	75%	100%	115%	125%	LR
Current (Amps)	2.30	2.50	3.2	4.1	5.0	5.8	6.3	40.0
Torque (ft-lb)	0.00	2.90	5.9	8.9	11.9	13.8	15.0	26.2
RPM	1800	1790	1780	1770	1760	1,750	1750	0
Efficiency (%)		84.0	89.5	90.2	89.5	88.5	88.5	
P.F. (%)	6.0	43.5	65.5	76.5	81.5	83.5	84.5	41.5

Motor Speed Data

	LR	Pull-Up	BD	Rated	Idle
Speed (RPM)	0	750	1650	1760	1800
Current (Amps)	40.0	38.0	24.0	5.0	2.30
Torque (ft-lb)	26.2	25.0	40.5	11.9	0.00

Information Block

HP	4.0			
Sync. RPM	1800			
Frame	100			
Enclosure	TEFC			
Construction	TFC			
Voltage	30/460#200/401V			
Frequency	60 Hz			
Design	B			
LR Code letter	J			
Service Factor	1.15			
Temp Rise @ FL	57 °C			
Duty	CONT			
Ambient	40 °C			
Elevation	1,000 feet			
Rotor/Shaft wk <sup>2</sup>	0.00 Lb-Ft <sup>2</sup>			
Ref Wdg	T06804015 NONE			
Sound Pressure @ 1M	55 dBA			
VFD Rating	CONSTANT 20:1			
Outline Dwg	B-SS62236			
Conn. Diag	005010.01			
Additional Specifications:				
0				
0				
EQUIV CKT (OHMS / PHASE)				
R1	R2	X1	X2	Xm
0.0000	0.0000	0.0000	0.0000	0.0000



Speed -Torque Curve

