

PRODUCT INFORMATION PACKET



Model No: 508782AC-Y
Catalog No: 508782AC-Y
B-508782AC-Y C BOX BASE/3" NPT/3/4" NPT

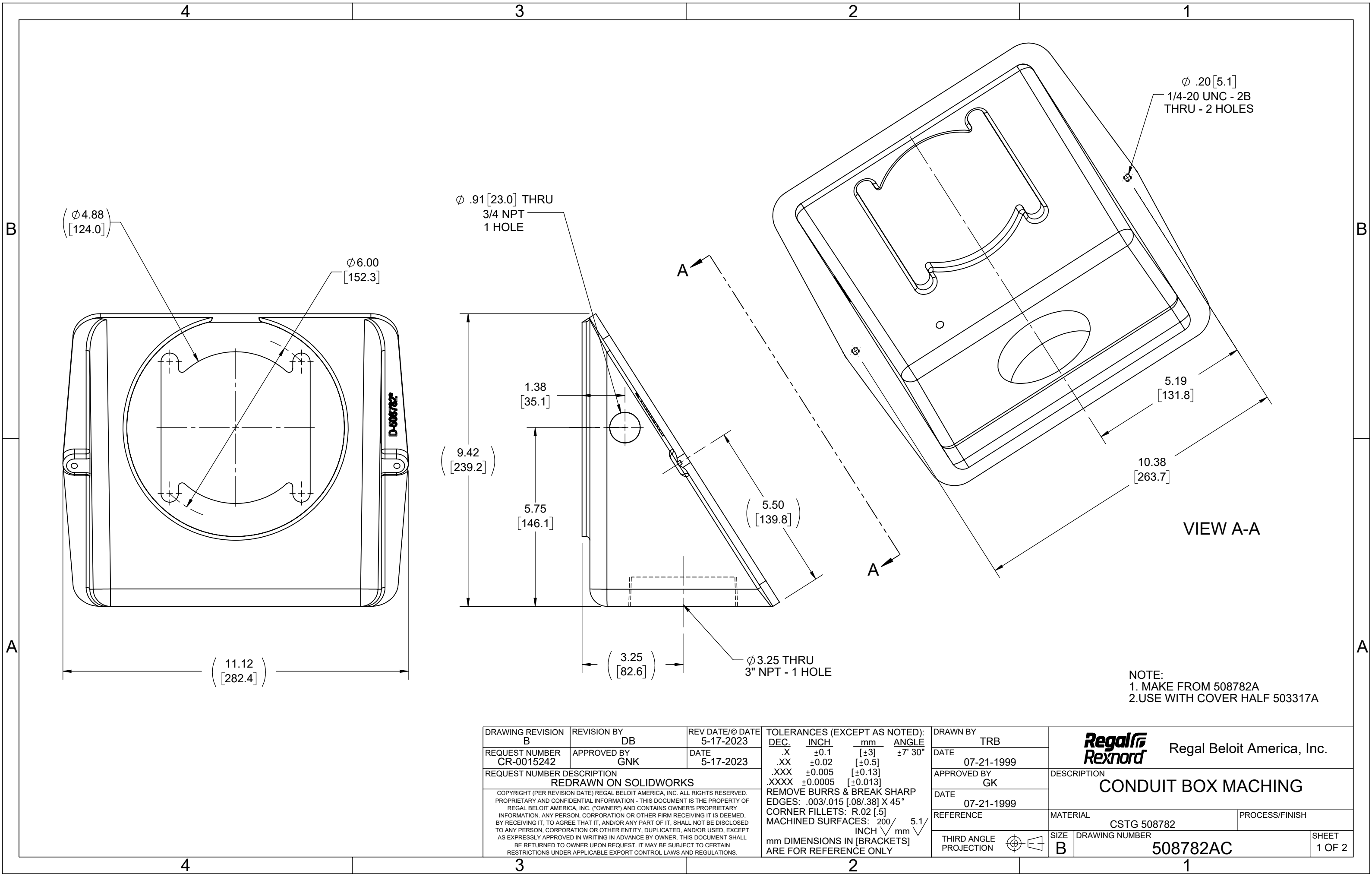
Regal and Marathon are trademarks of Regal Rexnord Corporation or one of its affiliated companies.
©2025 Regal Rexnord Corporation, All Rights Reserved. MC017097E



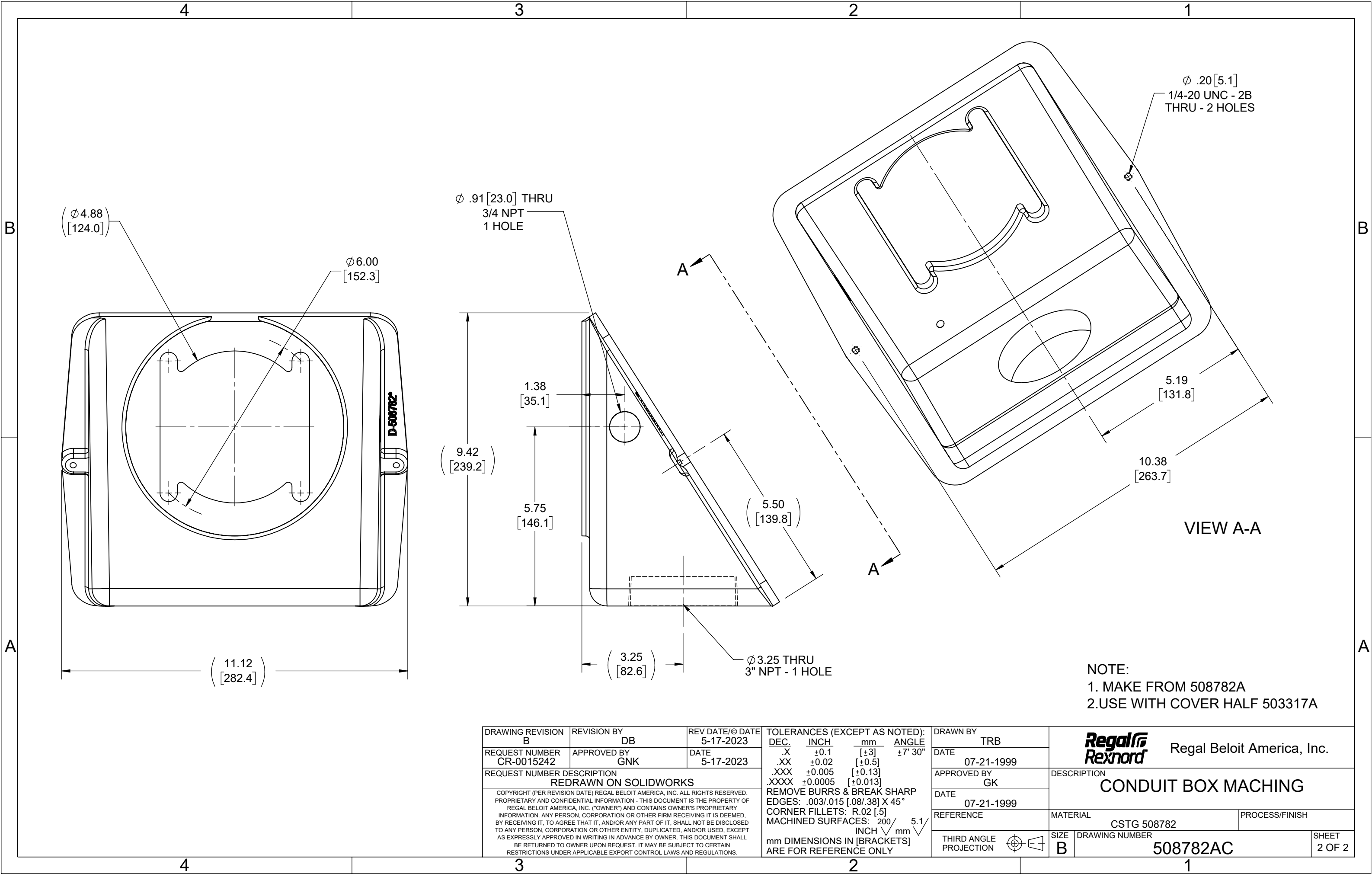
Nameplate Specifications

Technical Specifications

This is an uncontrolled document once printed or downloaded and is subject to change without notice. Date Created:04/04/2025



DRAWING REVISION B	REVISION BY DB	REV DATE/© DATE 5-17-2023	TOLERANCES (EXCEPT AS NOTED): DEC. INCH mm ANGLE .X ±0.1 [±3] ±7° 30" .XX ±0.02 [±0.5] .XXX ±0.005 [±0.13] .XXXX ±0.0005 [±0.013] REMOVE BURRS & BREAK SHARP EDGES: .003/.015 [.08/.38] X 45° CORNER FILLETS: R.02 [.5] MACHINED SURFACES: 200 INCH mm 5.1 mm DIMENSIONS IN [BRACKETS] ARE FOR REFERENCE ONLY		DRAWN BY TRB	<div>Regal Rexnord</div> Regal Beloit America, Inc.				
REQUEST NUMBER CR-0015242	APPROVED BY GNK	DATE 5-17-2023			DATE 07-21-1999					
REQUEST NUMBER DESCRIPTION REDRAWN ON SOLIDWORKS					APPROVED BY GK					
COPYRIGHT (PER REVISION DATE) REGAL BELOIT AMERICA, INC. ALL RIGHTS RESERVED. PROPRIETARY AND CONFIDENTIAL INFORMATION - THIS DOCUMENT IS THE PROPERTY OF REGAL BELOIT AMERICA, INC. ("OWNER") AND CONTAINS OWNER'S PROPRIETARY INFORMATION. ANY PERSON, CORPORATION OR OTHER FIRM RECEIVING IT IS DEEMED, BY RECEIVING IT, TO AGREE THAT IT, AND/OR ANY PART OF IT, SHALL NOT BE DISCLOSED TO ANY PERSON, CORPORATION OR OTHER ENTITY, DUPLICATED, AND/OR USED, EXCEPT AS EXPRESSLY APPROVED IN WRITING IN ADVANCE BY OWNER. THIS DOCUMENT SHALL BE RETURNED TO OWNER UPON REQUEST. IT MAY BE SUBJECT TO CERTAIN RESTRICTIONS UNDER APPLICABLE EXPORT CONTROL LAWS AND REGULATIONS.					DATE 07-21-1999					
					REFERENCE	MATERIAL CSTG 508782	PROCESS/FINISH			
					THIRD ANGLE PROJECTION	SIZE B	DRAWING NUMBER 508782AC	SHEET 1 OF 2		



DRAWING REVISION B	REVISION BY DB	REV DATE/© DATE 5-17-2023	TOLERANCES (EXCEPT AS NOTED): DEC. INCH mm ANGLE .X ±0.1 [±3] ±7° 30" .XX ±0.02 [±0.5] .XXX ±0.005 [±0.13] .XXXX ±0.0005 [±0.013] REMOVE BURRS & BREAK SHARP EDGES: .003/.015 [.08/.38] X 45° CORNER FILLETS: R.02 [.5] MACHINED SURFACES: 200 INCH mm 5.1 mm DIMENSIONS IN [BRACKETS] ARE FOR REFERENCE ONLY				DRAWN BY TRB	Regal Rexnord Regal Beloit America, Inc.		
REQUEST NUMBER CR-0015242	APPROVED BY GNK	DATE 5-17-2023					DATE 07-21-1999			
REQUEST NUMBER DESCRIPTION REDRAWN ON SOLIDWORKS			COPYRIGHT (PER REVISION DATE) REGAL BELOIT AMERICA, INC. ALL RIGHTS RESERVED. PROPRIETARY AND CONFIDENTIAL INFORMATION - THIS DOCUMENT IS THE PROPERTY OF REGAL BELOIT AMERICA, INC. ("OWNER") AND CONTAINS OWNER'S PROPRIETARY INFORMATION. ANY PERSON, CORPORATION OR OTHER FIRM RECEIVING IT IS DEEMED, BY RECEIVING IT, TO AGREE THAT IT, AND/OR ANY PART OF IT, SHALL NOT BE DISCLOSED TO ANY PERSON, CORPORATION OR OTHER ENTITY, DUPLICATED, AND/OR USED, EXCEPT AS EXPRESSLY APPROVED IN WRITING IN ADVANCE BY OWNER. THIS DOCUMENT SHALL BE RETURNED TO OWNER UPON REQUEST. IT MAY BE SUBJECT TO CERTAIN RESTRICTIONS UNDER APPLICABLE EXPORT CONTROL LAWS AND REGULATIONS.				APPROVED BY GK	DESCRIPTION CONDUIT BOX MACHING		
							DATE 07-21-1999			
							REFERENCE	MATERIAL CSTG 508782	PROCESS/FINISH	
							THIRD ANGLE PROJECTION	SIZE B	DRAWING NUMBER 508782AC	SHEET 2 OF 2