

PRODUCT INFORMATION PACKET



Model No: 141429.00

Catalog No: 141429.00

General Purpose Motor, 7.50 HP, 1 Ph, 60 Hz, 230 V, 1800 RPM, 215TC Frame, TEFC

Regal and Leeson are trademarks of Regal Rexnord Corporation or one of its affiliated companies.
©2022 Regal Rexnord Corporation, All Rights Reserved. MC017097E





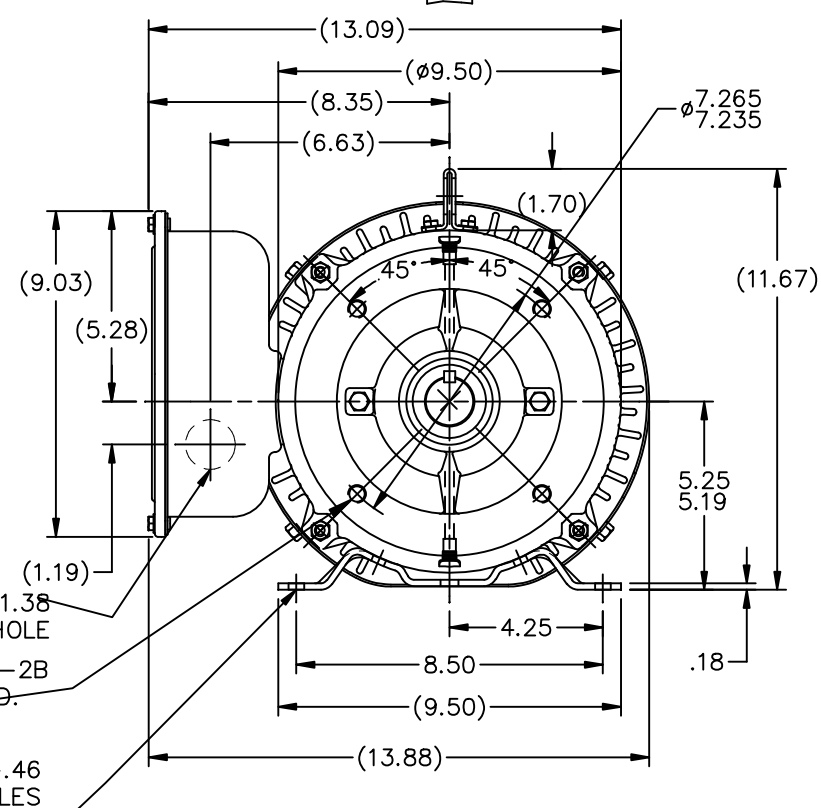
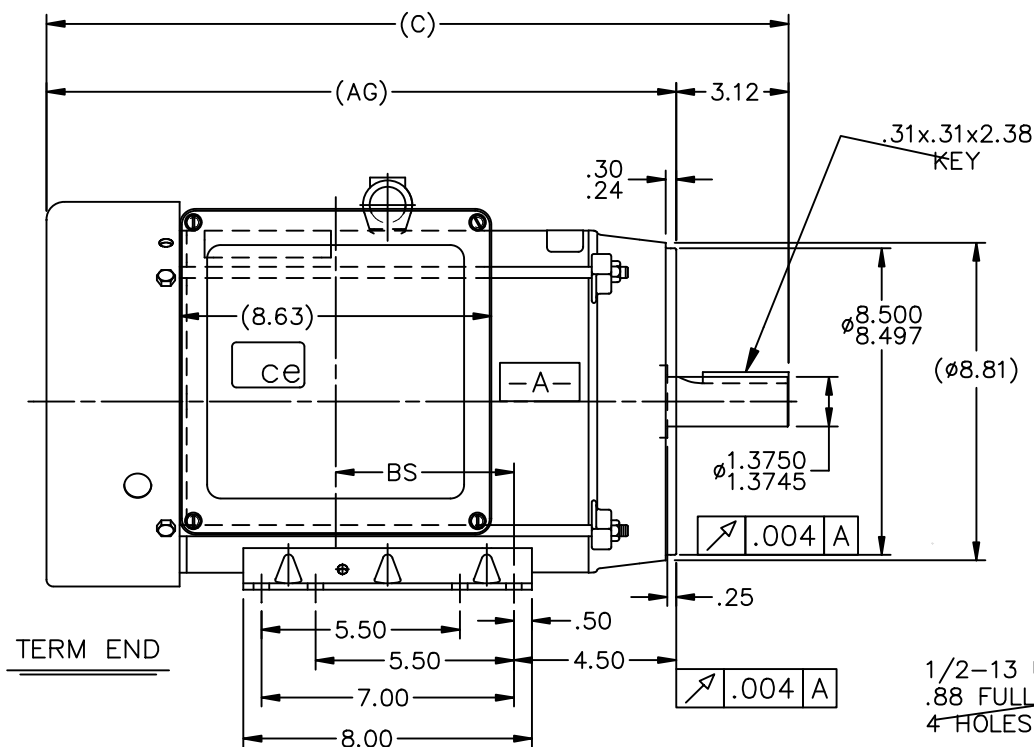
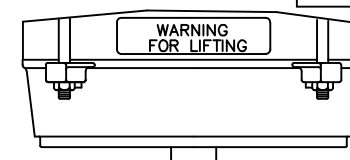
Nameplate Specifications

Output HP	7.50 Hp	Output KW	5.6 kW
Frequency	60 Hz	Voltage	230 V
Current	30.5 A	Speed	1750 rpm
Service Factor	1.15	Phase	1
Efficiency	85.5 %	Power Factor	95
Duty	Continuous	Insulation Class	F
Design Code	NO DESIGN CODE	KVA Code	K
Frame	215TC	Enclosure	Totally Enclosed Fan Cooled
Thermal Protection	No Protection	Ambient Temperature	40 °C
Drive End Bearing Size	6309	Opp Drive End Bearing Size	6206
UL	Recognized	CSA	Y
CE	N	IP Code	43
Number of Speeds	1		

Technical Specifications

Electrical Type	Capacitor Start Capacitor Run	Starting Method	Across The Line
Poles	4	Rotation	Selective Counterclockwise
Resistance Main	.215 Ohms	Mounting	Rigid Base
Motor Orientation	Horizontal	Drive End Bearing	Ball
Opp Drive End Bearing	Ball	Frame Material	Rolled Steel
Shaft Type	T	Shaft Diameter	1.375 in
Assembly/Box Mounting	F1 ONLY		
Connection Drawing	A-EE9048LX-LE	Outline Drawing	SS88690LE-1240

This is an uncontrolled document once printed or downloaded and is subject to change without notice. Date Created:11/29/2022



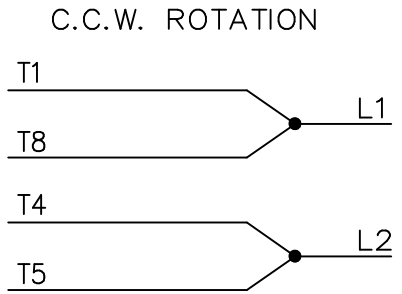
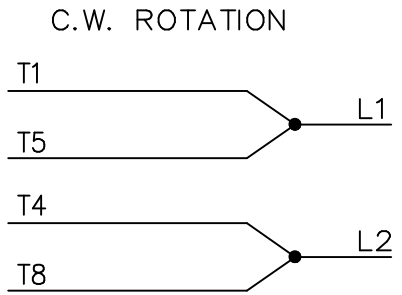
TERM END

- NOTES:
 1. NAMEPLATE TO BE READ FROM C'BOX SIDE OF MOTOR.
 2. DASH 965 TO BE READ FROM OPPOSITE SHAFT END

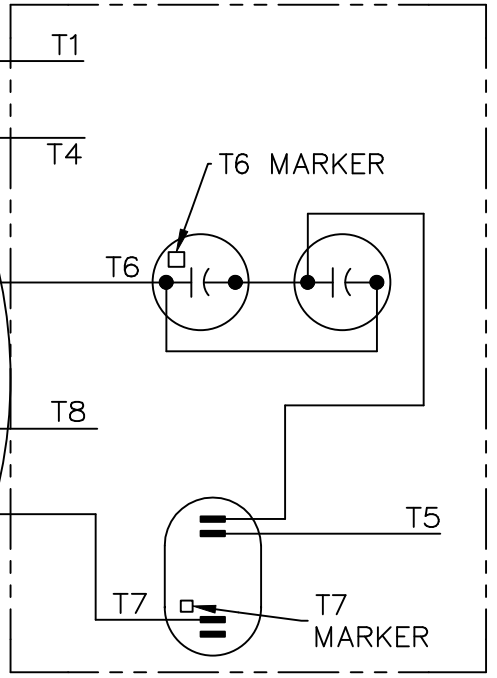
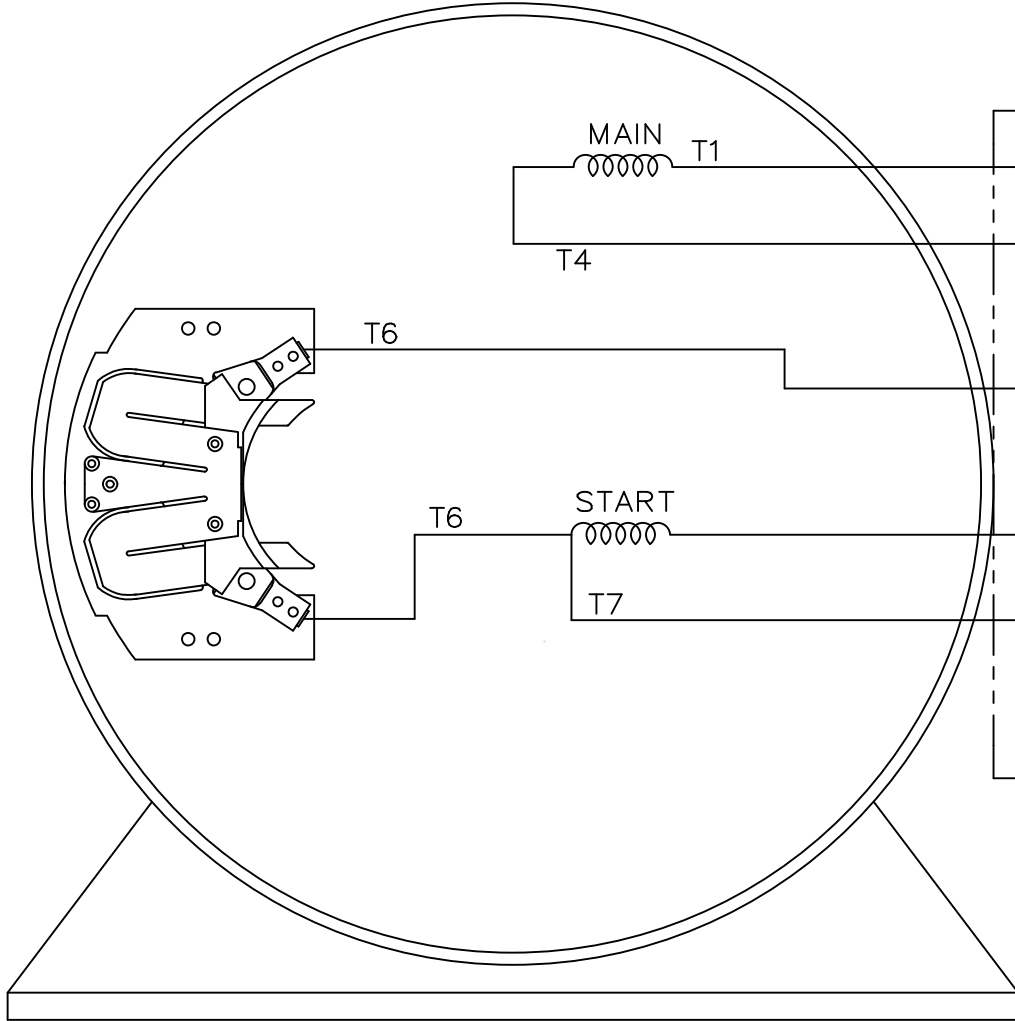
DASH	FR.	C	BS	AG
965	213T	19.07	3.44	15.95
1115	213/15T	20.57	4.94	17.45
1240	215T	21.82	6.19	18.70

				TOLERANCES UNLESS SPECIFIED		LEESON	ELECTRIC MOTORS GEARMOTORS AND DRIVES	DRAWN RJM 07-26-2002			
				DEC.	INCHES			CHK	ML	08-05-2002	
				.X	±.1			APPD	JPL	08-02-2002	
				.XX	±.03	TITLE OUTLINE		SCALE	3=16		
2	ADDED NOTE 2	CN 31881	DRS 10-21-2002	ML	.XXX	±.005	210 FR. - TEFC - C'FACE - 1 PHASE		REF		
1	NEW DRAWING -	DES/DEV	RJM 08-02-2002		.XXXX	±.0005	MAT'L.		FMF		
NO.	REVISION		BY & DATE	CHK	ANG	±7'30"	FINISH		PREV		
THIS DRAWING IN DESIGN AND DETAIL IS OUR PROPERTY AND MUST NOT BE USED EXCEPT IN CONNECTION WITH OUR WORK ALL RIGHTS OF DESIGN AND INVENTION ARE RESERVED THIS IS AN ELECTRONICALLY GENERATED DOCUMENT - DO NOT SCALE THIS PRINT				RFP	CAD FILE ss88690le			SIZE	DRAWING NO.	PAGE OF	REV.
				DIST	LB			A	SS88690LE		2


SINGLE VOLTAGE – CAPACITOR START – CAPACITOR RUN
REVERSIBLE



CONNECT:
START CAPACITORS
IN PARALLEL.



VIEW OF TERMINAL END

			TOLERANCES UNLESS SPECIFIED		 ELECTRIC MOTORS GEARMOTORS AND DRIVES	DRAWN KVN 10/23/2009
			DEC.	INCHES		CHK
			.X	± -		APPD
			.XX	± -		SCALE
			.XXX	± -		REF EE9048LX
			.XXXX	± -	MAT'L.	FMF
NO.	REVISION	BY & DATE	CHK	ANG	FINISH	PREV
THIS DRAWING IN DESIGN AND DETAIL IS OUR PROPERTY AND MUST NOT BE USED EXCEPT IN CONNECTION WITH OUR WORK ALL RIGHTS OF DESIGN AND INVENTION ARE RESERVED THIS IS AN ELECTRONICALLY GENERATED DOCUMENT – DO NOT SCALE THIS PRINT			RFP	CAD FILE EE9048LX-LE		SIZE A
			DIST			DRAWING NO. EE9048LX-LE
						REV.