

PRODUCT INFORMATION PACKET



Model No: 141427.00

Catalog No: 141427.00

Crop Dryer Motor, 7.50 HP, 1 Ph, 60 Hz, 230 V, 1800 & 1800 RPM, 215TZ Frame, TEFC



Regal and Leeson are trademarks of Regal Rexnord Corporation or one of its affiliated companies.
©2025 Regal Rexnord Corporation, All Rights Reserved. MC017097E





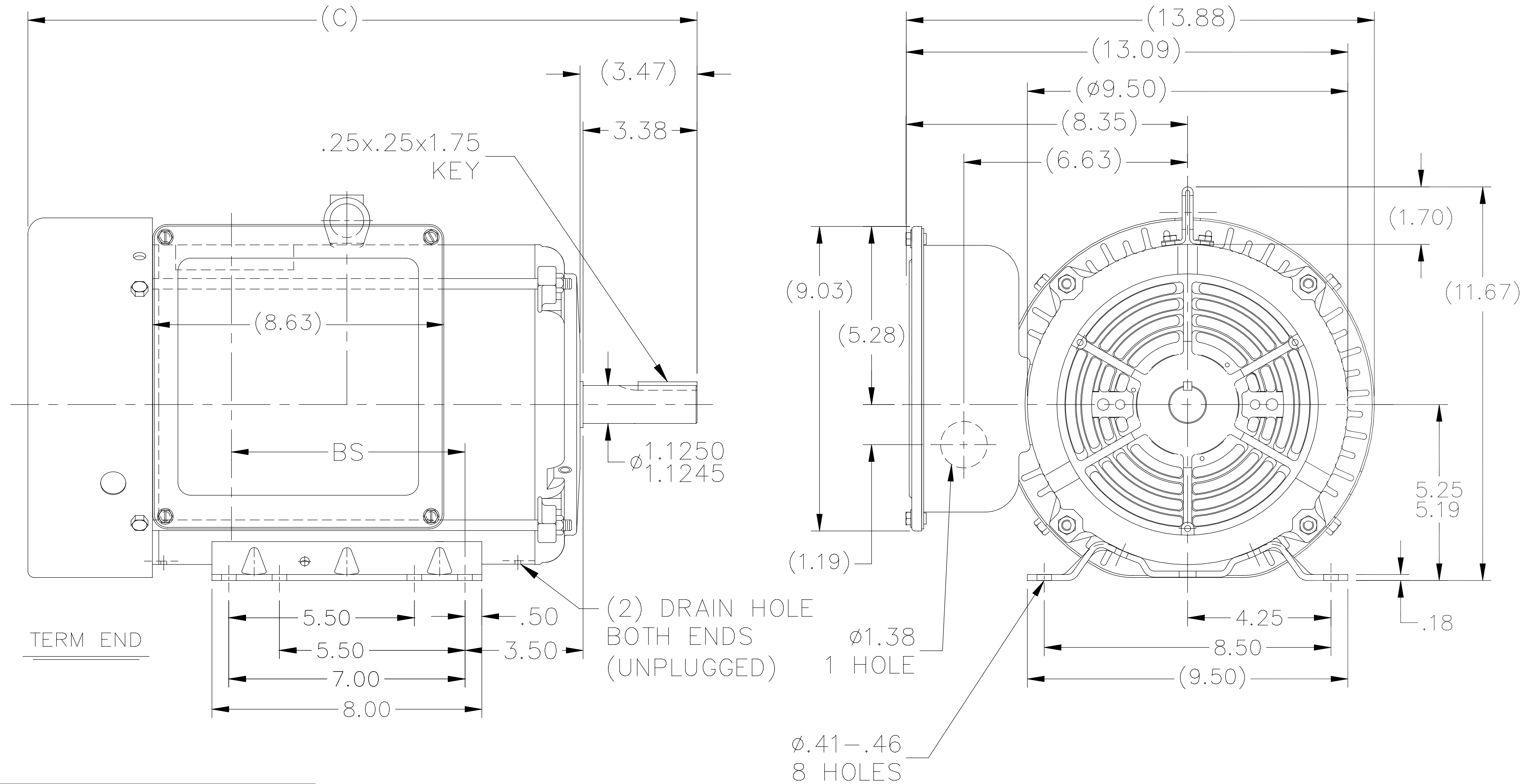
Nameplate Specifications

Phase	1	Output HP	7.50 Hp
Output KW	5.6 kW	Voltage	230 V
Speed	1750 r/min	Service Factor	1.15
Frame	215TZ	Enclosure	Totally Enclosed Fan Cooled
Thermal Protection	Manual	Efficiency	85.5 %
Ambient Temperature	40 °C	Frequency	60 Hz
Current	30.5 A	Power Factor	95
Duty	Continuous	Insulation Class	F
Design Code	NO DESIGN CODE	KVA Code	K
Drive End Bearing Size	6307	Opp Drive End Bearing Size	6206
UL	Recognized (Not Protector)	CSA	Y
CE	N	IP Code	43
Number of Speeds	1		

Technical Specifications

Electrical Type	Capacitor Start Capacitor Run	Starting Method	Across The Line
Poles	4	Rotation	Selective Counterclockwise
Resistance Main	.215 O	Mounting	Rigid Base
Motor Orientation	Horizontal	Drive End Bearing	Ball
Opp Drive End Bearing	Ball	Frame Material	Rolled Steel
Shaft Type	Single Special Extension	Overall Length	21.09 in
Frame Length	12.40 in	Shaft Diameter	1.125 in
Shaft Extension	3.47 in	Assembly/Box Mounting	F1 ONLY
Connection Drawing	EE9048RC-LE	Outline Drawing	SS86671-1240


SS86671



DASH	FRAME	C	BS
965	213T	18.34	5.42
1115	213/15T	19.84	6.92
1240	215T	21.09	8.17

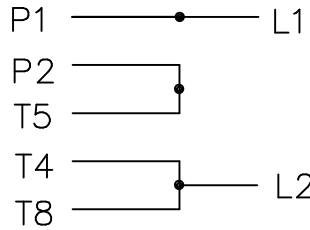
NOTES:

1. NAMEPLATE TO BE READ FROM C'BOX SIDE OF MOTOR.
2. DASH 965 TO BE READ FROM OPPOSITE SHAFT END.

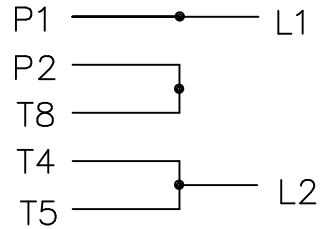
				TOLERANCES UNLESS SPECIFIED		 Regal Beloit America, Inc.	DRAWN MH 04-17-1997		
				DEC.	INCHES		CHK ML 04-18-1997	APPD DN 04-18-1997	SCALE 7=32
				.X	±.1	TITLE OUTLINE - STEEL C' BOX 210 FR. - BB - TS - TEFC 1φ	REF		
8	DRAIN HOLES ADDED	KIR 02/08/16	SS	.XXX	±.005		MAT'L.	FMF	
7	REVISED 'B' DIMENSION 08-0118	RJW 01-22-2008	ML	.XXXX	±.0005		FINISH	PREV	
NO.	REVISION	BY & DATE	CHK	ANG	±7'30"				
THIS DRAWING IN DESIGN AND DETAIL IS OUR PROPERTY AND MUST NOT BE USED EXCEPT IN CONNECTION WITH OUR WORK ALL RIGHTS OF DESIGN AND INVENTION ARE RESERVED THIS IS AN ELECTRONICALLY GENERATED DOCUMENT - DO NOT SCALE THIS PRINT				RFP	CAD FILE ss86671	SIZE A	DRAWING NO. SS86671	PAGE OF 8	REV. 8
				DIST LB					

CONNECT:
START CAPACITORS IN PARALLEL

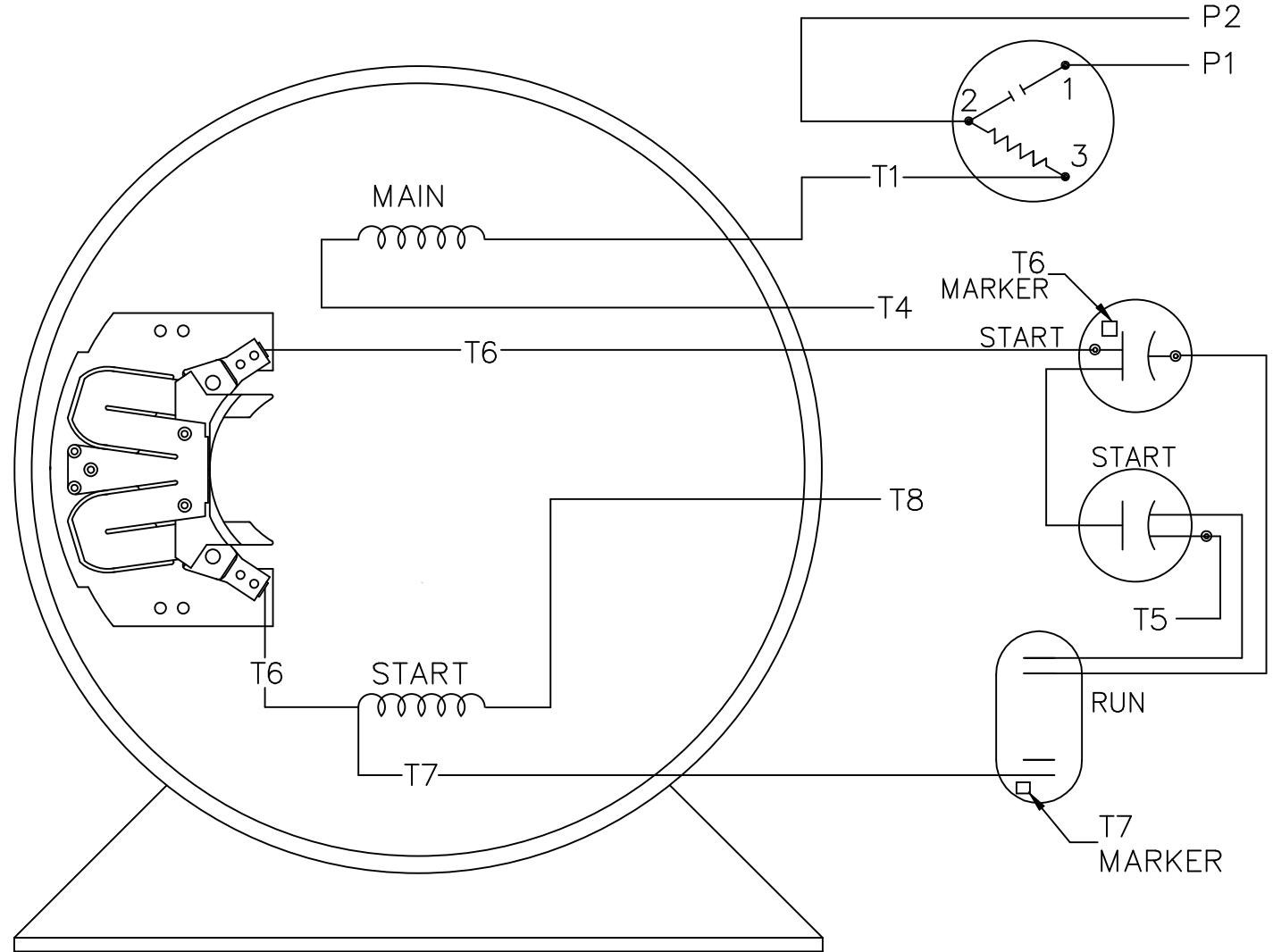
C.W. ROTATION



C.C.W. ROTATION



SINGLE VOLTAGE
CAPACITOR START
CAPACITOR RUN
REVERSIBLE



VIEW OF TERMINAL END

		TOLERANCES UNLESS SPECIFIED		LEESON	ELECTRIC MOTORS GEARMOTORS AND DRIVES	DRAWN KVN 11/04/2009
		DEC.	INCHES			CHK
		.X	±.1			APPD
		.XX	±.02			SCALE 1=1
		.XXX	±.005			REF EE9048RC
		.XXXX	±.0005	MAT'L. 180-210 SWITCH	FMF 140414.10	
NO.	REVISION	BY & DATE	CHK	ANG ±7'30"	FINISH	PREV
THIS DRAWING IN DESIGN AND DETAIL IS OUR PROPERTY AND MUST NOT BE USED EXCEPT IN CONNECTION WITH OUR WORK ALL RIGHTS OF DESIGN AND INVENTION ARE RESERVED THIS IS AN ELECTRONICALLY GENERATED DOCUMENT - DO NOT SCALE THIS PRINT			RFP	CAD FILE EE9048RC-LE		SIZE A
			DIST			DRAWING NO. EE9048RC-LE
						PAGE OF
						REV.