

PRODUCT INFORMATION PACKET

Model No: 141424.00

Catalog No: 141424.00

141424.00..7.5HP..1765RPM.215TCZ.TEFC.230/460V.3PH.60HZ.CONT.40C.1.15SF.RIGID.....

Regal and are trademarks of Regal Rexnord Corporation or one of its affiliated companies.
©2022 Regal Rexnord Corporation, All Rights Reserved. MC017097E



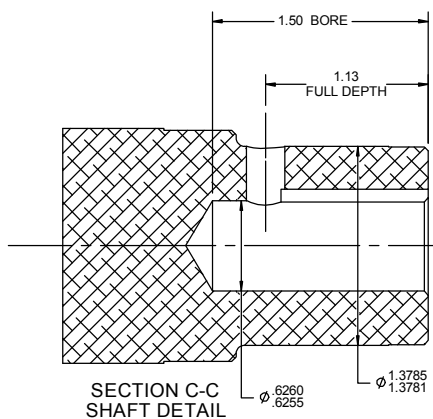
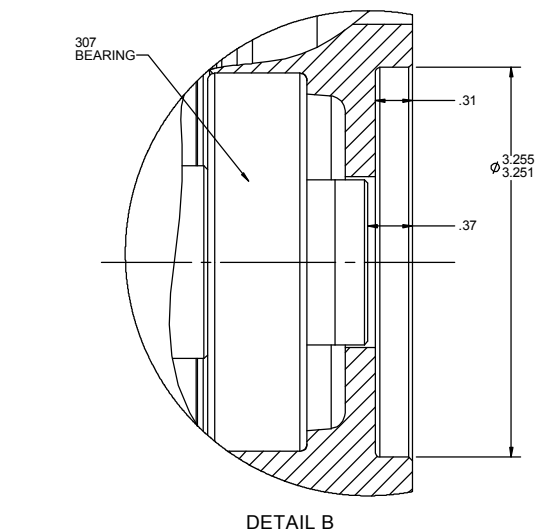
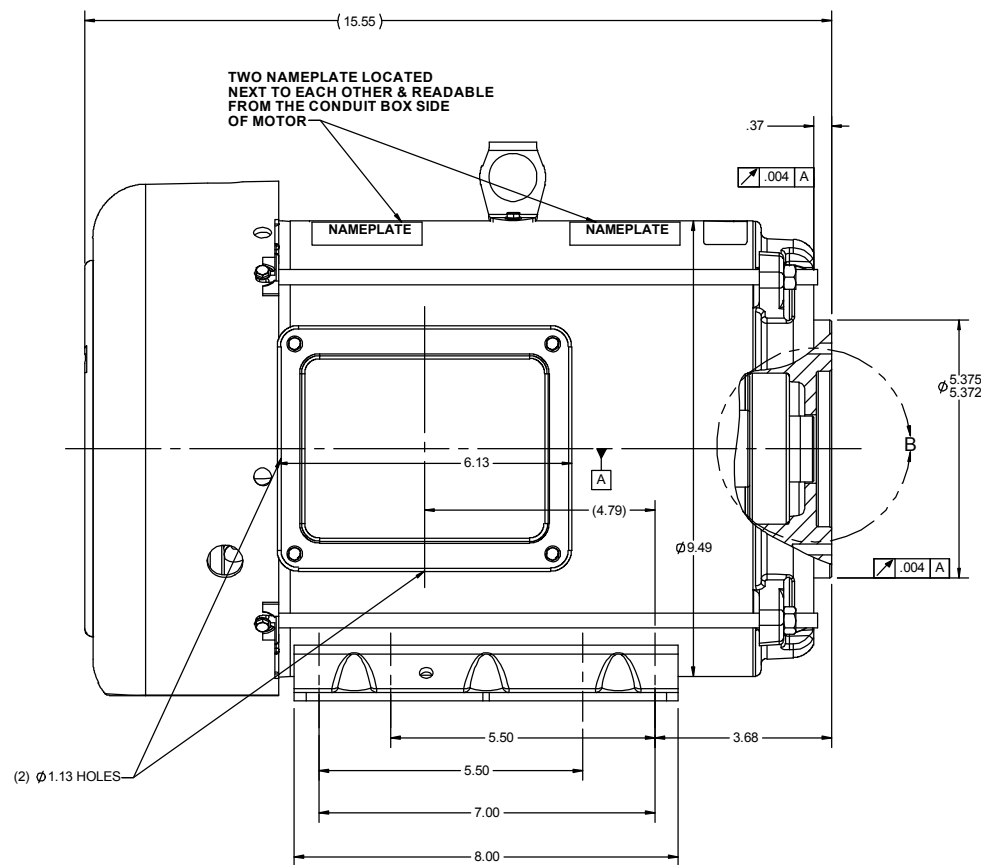
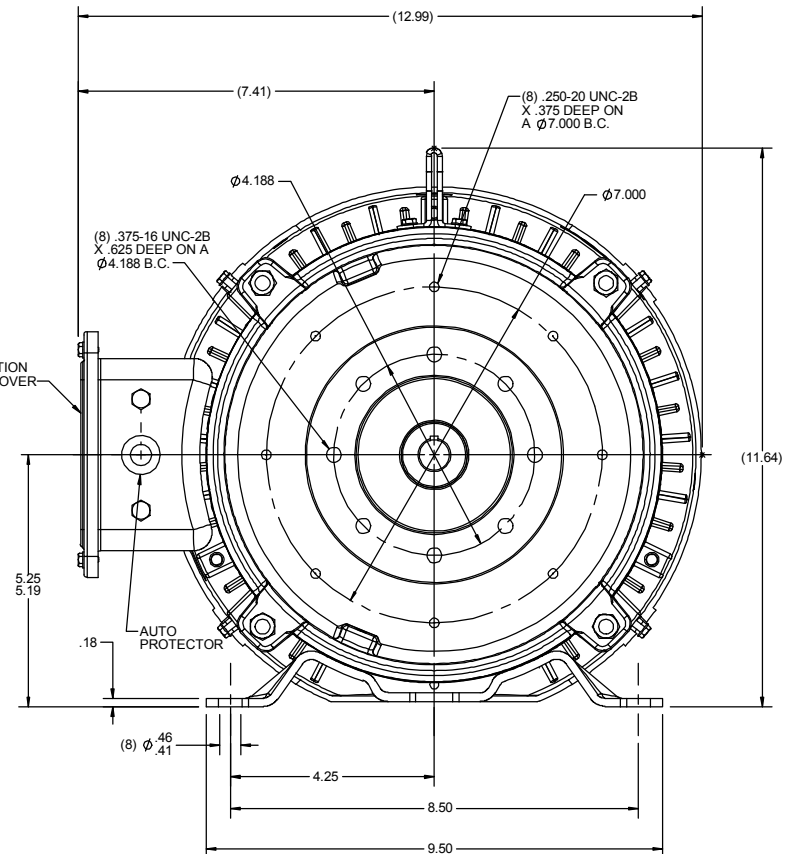
Nameplate Specifications

Output HP	7.50 Hp	Output KW	5.6 kW
Frequency	60 Hz	Voltage	230/460 V
Current	19.6/9.8 A	Speed	1765 rpm
Service Factor	1.15	Phase	3
Efficiency	91.7 %	Power Factor	78.3
Duty	Continuous	Insulation Class	F
Design Code	B	KVA Code	H
Frame	215TVZ	Enclosure	Totally Enclosed Fan Cooled
Thermal Protection	Automatic	Ambient Temperature	40 °C
Drive End Bearing Size	6307	Opp Drive End Bearing Size	6206
UL	Recognized (Not Protector)	CSA	Y
CE	Y	IP Code	43
Number of Speeds	1		

Technical Specifications

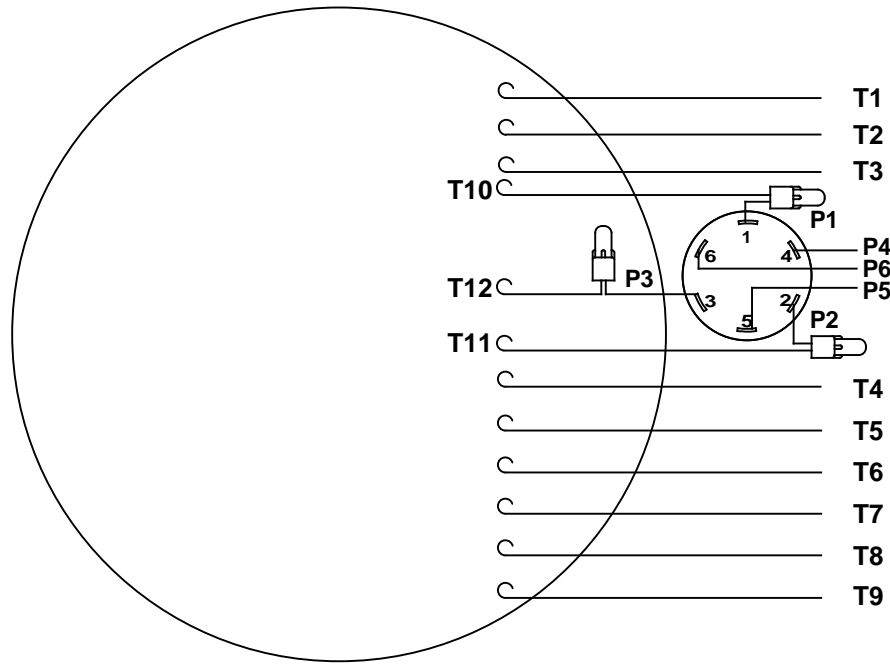
Electrical Type	Squirrel Cage Induction Run	Starting Method	Across The Line
Poles	4	Rotation	Reversible
Resistance Main	1.18 Ohms	Mounting	Rigid Base
Motor Orientation	Shaft Down	Drive End Bearing	Ball
Opp Drive End Bearing	Ball	Frame Material	Rolled Steel
Shaft Type	Single Special Extension	Shaft Diameter	3.255 in
Assembly/Box Mounting	W6		
Connection Drawing	005020.02	Outline Drawing	OL141424

This is an uncontrolled document once printed or downloaded and is subject to change without notice. Date Created:11/01/2022

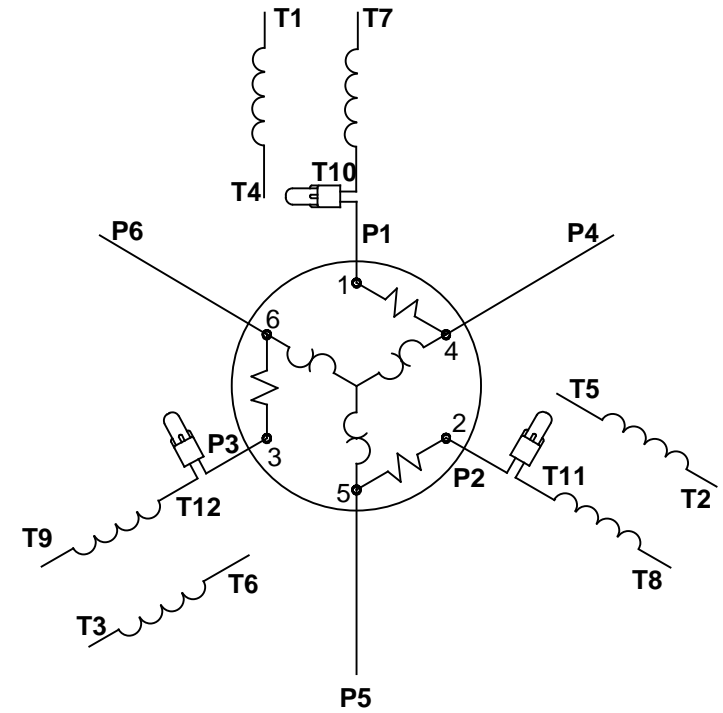
SECTION C-C
SHAFT DETAIL

DRAWING REVISION B		REVISION BY NK	DATE 05-17-2019	TOLERANCES UNLESS OTHERWISE SPECIFIED:		DRAWN BY MVG	REGAL™ Regal Beloit America, Inc.	
ECO-0167314		APPROVED BY RG	DATE 05-17-2019	DEC.	INCH	mm	DATE 02/08/2018	DESCRIPTION
ECO DESCRIPTION				.X	±0.1	[±2.5]	APPROVED BY MSD	TEFC - 210 FRAME - SAE FLANGE PUMP MOUNT
NAME PLATE LOCATION UPDATED PER ECR-0176844				.XX	±0.03	[±0.76]	DATE 02/08/2018	MATERIAL
COPYRIGHT REGAL BELOIT AMERICA, INC. ALL RIGHTS RESERVED.				.XXX	±0.005	[±0.127]	REFERENCE OLPRT173056	PROCESS/FINISH
PROPRIETARY AND CONFIDENTIAL INFORMATION. THIS DOCUMENT IS THE PROPERTY OF REGAL BELOIT AMERICA, INC. FORMERLY AND CONTAINS OWNERS PROPRIETARY INFORMATION. ANY PERSON, CORPORATION OR OTHER FIRM RECEIVING IT IS DEMAND, BY RECEIVING IT, TO AGREE THAT IT, AND/OR ANY PART OF IT, SHALL NOT BE DISCLOSED TO ANY PERSON, CORPORATION OR OTHER ENTITY, DUPLICATED, AND/OR USED, EXCEPT AS EXPRESSLY APPROVED IN WRITING IN ADVANCE BY OWNER. THIS DOCUMENT SHALL BE RETURNED TO OWNER UPON REQUEST. IT MAY BE SUBJECT TO CERTAIN RESTRICTIONS UNDER APPLICABLE EXPORT CONTROL LAWS AND REGULATIONS.				.XXXX	±0.0005	[±0.0127]	THIRD ANGLE PROJECTION	DRAWING NUMBER
				REMOVE BURRS & BREAK SHARP EDGES: .0031 [0.076] X 45° CORNER FILLETS: R.02 [51]				SIZE
				MACHINED SURFACES: .125/32 INCH/ mm SHOWN IN [BRACKETS]				C
								OL141424
								1 OF 1

VIEW FROM OUTSIDE OF MOTOR AT SWITCH END.


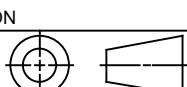


LINE LEADS



RBC PROPRIETARY AND CONFIDENTIAL INFORMATION
This document is the property of REGAL BELOIT CORPORATION ("RBC") including its subsidiaries and divisions and contains proprietary information of RBC. This document is loaned on the express condition that neither it nor the information contained therein shall be disclosed to others without the express written consent of RBC, and that the information shall be used by the recipient only as approved expressly by RBC. This document shall be returned to RBC upon its request. This document may be subject to certain restrictions under U.S. export control laws and regulations.

VOLTAGE	L1	L2	L3	JOIN	SEPARATE
HIGH	T1	T2	T3	(T4,T7) (T5,T8) (T6,T9)	(P4) (P5) (P6)
LOW	T1,T7	T2,T8	T3,T9	(T4,P4) (T5,P5) (T6,P6)	

				TOLERANCES UNLESS SPECIFIED			ELECTRIC MOTORS GEARMOTORS AND DRIVES		DRAWN VJB 02/18/11		
				DEC	INCHES				CHK		
				.X	±.1				APPR		
				.XX	±.01		TITLE EXTERNAL WIRING DIAGRAM		SCALE 1:1		
				.XXX	±.005		TYPE "T" W/PROTECTOR		REF		
02	ADDED REV TO AGREE WITH ORACLE		ARV 4/26/2011	KH	.XXXX	±.0005	MAT'L DECAL - 004023-01		FMF		
NO	REVISION		BY & DATE	CHK	ANG	±1/2°	FINISH		PAGE OF		
<div>THIRD ANGLE PROJECTION</div> 				RFP		PREV		SIZE A	DRAWING NO 005020-02		REV 02
				NETWORK FILE NAME 00502002							

EC Declaration of Conformity

The undersigned representing
the manufacturer:

Regal Beloit America
100 East Randolph St.
Wausau, WI 54401

and the authorized representative
established within the Community:

Marathon Electric UK
6F Thistleton Road Ind. Estate
Market Overton
Oakham, Rutland LE15 7PP UK

are committed to providing customers with products that comply with applicable regulations and international protocols to which they are subject, including the requirements of the European Parliament Directive on the Harmonization of the laws relating to electrical equipment designed for use within certain voltage limits (2014/35/EU).

Regal Beloit America declares that the following product(s), to which this declaration relates, are in conformity with the relevant sections of the EC standards listed below.

This statement supersedes any statements previously issued pertaining to the product(s) listed below and is subject to change without notice.

Model No : 141424.00

(Model No. may contain prefix and/or suffix characters)

Catalog No : 141424.00

Rework No : N/A

Directives :

Low Voltage Directive 2014/35/EU

Harmonized Standards Used :

EN 60034-1: 2010 (IEC 60034-1: 2010)

EN 60034-5: 2001/A1:2007 (IEC 60034-5: 2000/A1:2006)

Authorized Representative:



Michael A. Logsdon
Vice President, Technology

Authorized Representative in the Community:



Julian Clark
Marketing Engineer

Created on 09/01/2022

CE 22