

PRODUCT INFORMATION PACKET

Model No: 141418.00

Catalog No: 141418.00

141418.00..20HP..3520RPM.215TZ.DPAO.230/460VAC.3PH.60HZ.CONT.40C.1.25SF.RIGID.....

Regal and are trademarks of Regal Rexnord Corporation or one of its affiliated companies.
©2022 Regal Rexnord Corporation, All Rights Reserved. MC017097E



Nameplate Specifications

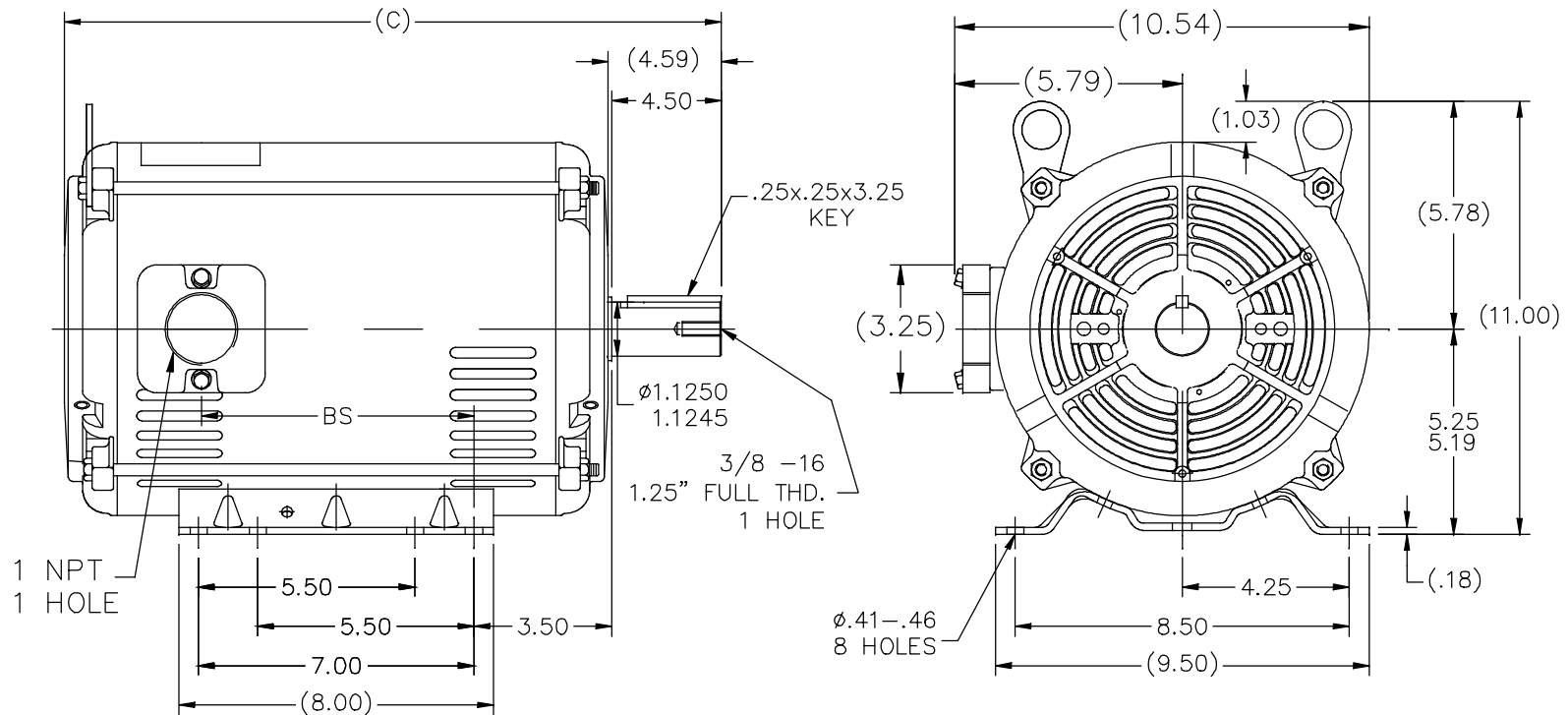
| | | | |
|------------------------|-------------|----------------------------|---------------------|
| Output HP | 20 Hp | Output KW | 14.9 kW |
| Frequency | 60 Hz | Voltage | 230/460 V |
| Current | 46.0/23.1 A | Speed | 3520 rpm |
| Service Factor | 1.25 | Phase | 3 |
| Efficiency | 91 % | Power Factor | 88.6 |
| Duty | Continuous | Insulation Class | F |
| Design Code | A | KVA Code | F |
| Frame | 215TZ | Enclosure | Drip Proof Air Over |
| Thermal Protection | Thermostat | Ambient Temperature | 40 °C |
| Drive End Bearing Size | 6307 | Opp Drive End Bearing Size | 6206 |
| UL | Recognized | CSA | Y |
| CE | N | IP Code | 22 |
| Number of Speeds | 1 | | |

Technical Specifications

| | | | |
|-----------------------|-----------------------------|-------------------|-----------------|
| Electrical Type | Squirrel Cage Induction Run | Starting Method | Across The Line |
| Poles | 2 | Rotation | Reversible |
| Resistance Main | .485 Ohms | Mounting | Rigid Base |
| Motor Orientation | Horizontal | Drive End Bearing | Ball |
| Opp Drive End Bearing | Ball | Frame Material | Rolled Steel |
| Shaft Type | Single Special Extension | Shaft Diameter | 1.125 in |
| Assembly/Box Mounting | F1 ONLY | | |
| Connection Drawing | 005010.20 | Outline Drawing | 038178-1240 |

This is an uncontrolled document once printed or downloaded and is subject to change without notice. Date Created:11/10/2022


038178



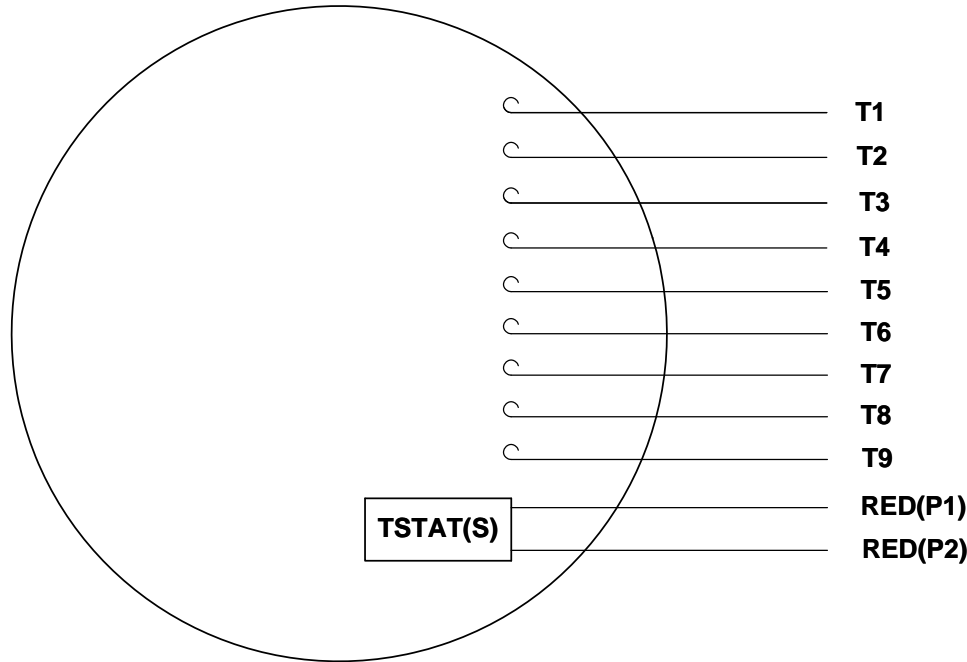
NOTES:

1. NAMEPLATE TO BE READ FROM CONDUIT PAD SIDE OF MOTOR.
2. F1 MOUNTING ONLY.

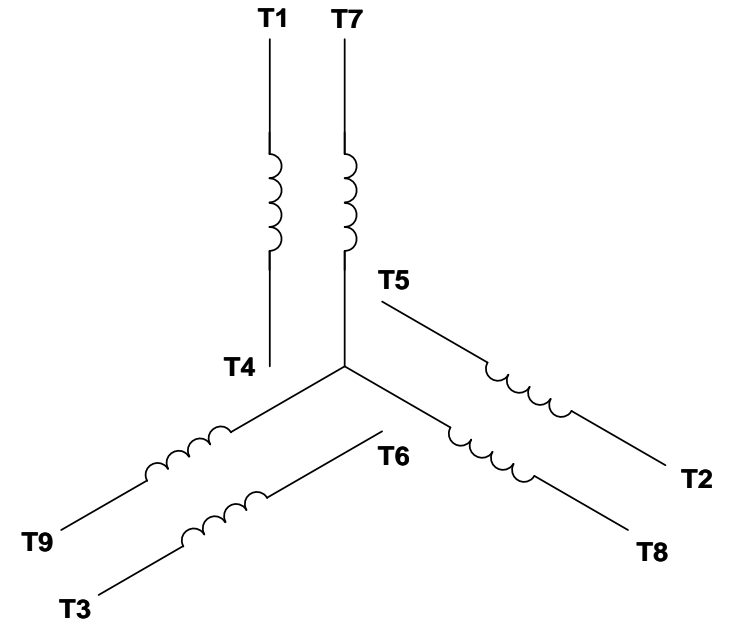
| | | | | |
|------|---------|-------|------|----------|
| 1240 | 213/15T | 19.67 | 8.18 | F1 ONLY |
| | | | | |
| | | | | |
| | | | | |
| DASH | FRAME | C | BS | MOUNTING |

| | | | | | | | | | | | | | |
|--|-------------|--------------|-----|-------|---------------------------------|--------|---|----------------------|---------------|-------------|------------|----|------|
| | | | | | TOLERANCES UNLESS SPECIFIED | |  Regal Beloit America, Inc. | DRAWN MVG 08/25/2017 | | | | | |
| | | | | | DEC. | INCHES | | CHK | GR 08/25/17 | | | | |
| | | | | | .X | ±.1 | | APPD | GR 08/25/2017 | | | | |
| | | | | | .XX | ±.03 | | SCALE | 1=4 | | | | |
| | | | | | .XXX | ±.005 | TITLE OUTLINE | | | REF | OLPR170555 | | |
| | | | | | 210T FR. — BB — TZ — DRIP PROOF | | | | | | | | |
| A | NEW DRAWING | MVG 08/25/17 | GR | .XXXX | ±.0005 | MAT'L | | | FMF | | | | |
| NO. | REVISION | BY & DATE | CHK | ANG | ±7'30" | FINISH | | | PREV | | | | |
| THIS DRAWING IN DESIGN AND DETAIL IS OUR PROPERTY AND MUST NOT BE USED EXCEPT IN CONNECTION WITH OUR WORK ALL RIGHTS OF DESIGN AND INVENTION ARE RESERVED THIS IS AN ELECTRONICALLY GENERATED DOCUMENT — DO NOT SCALE THIS PRINT | | | | RFP | CAD FILE 038178 | | | | SIZE | DRAWING NO. | PAGE | OF | REV. |
| | | | | DIST | | | | | A | 038178 | | | A |

VIEW FROM OUTSIDE OF MOTOR AT SWITCH END. Uncontrolled Copy



LINE LEADS



| VOLTAGE | L1 | L2 | L3 | JOIN & INSULATE |
|---------|-------|-------|-------|-------------------------------|
| HIGH | T1 | T2 | T3 | (T4,T7) (T5,T8) (T6,T9) |
| LOW | T1,T7 | T2,T8 | T3,T9 | T4,T5,T6 |

| | | |
|-----------------------|--------------------|--------------------|
| DRAWING REVISION G | REVISION BY MVG | DATE 04/05/2017 |
| ECO ECO-0121253 | APPROVED BY SM | DATE 04/05/2017 |

ECO DESCRIPTION
ADDED P1 & P2 FOR TSTAT

TOLERANCES UNLESS OTHERWISE SPECIFIED:

| DEC. | INCH | mm | ANGLE |
|-------|---------|-----------|-------|
| .X | ±0.1 | [±2.5] | ±0.5° |
| .XX | ±0.01 | [±0.25] | |
| .XXX | ±0.005 | [±0.127] | |
| .XXXX | ±0.0005 | [±0.0127] | |

REMOVE BURRS & BREAK SHARP EDGES: .003/.015 [.076/.381] X 45°
CORNER FILLETS: R.02 [.51]
MACHINED SURFACES: 125/3.2 INCH/mm

mm SHOWN IN [BRACKETS]

DRAWN BY
DBT 12/16/97

DATE

APPROVED BY
KH 12/17/97

DATE

REFERENCE

THIRD ANGLE PROJECTION



Regal Beloit America, Inc.

DESCRIPTION
CONN DIAGRAM-EXTERNAL
3 PHASE WITH PROTECTOR

MATERIAL
DECAL - 004014 (TSTAT) - 080582

PROCESS/FINISH
STOCK

SIZE
A

DRAWING NUMBER
00501020

SHEET
1 OF 1