

PRODUCT INFORMATION PACKET

Model No: 141382.00

Catalog No: 141382.00

141382.00..7.5HP..1740RPM.215TC.TEFC.230VAC.1PH.60HZ.CONT.40C.1.15SF.RIGID-C.....

Regal and are trademarks of Regal Rexnord Corporation or one of its affiliated companies.
©2022 Regal Rexnord Corporation, All Rights Reserved. MC017097E



Nameplate Specifications

Output HP	7.50 Hp	Output KW	5.6 kW
Frequency	60 Hz	Voltage	208-230 V
Current	33.6-36.6 A	Speed	1740 rpm
Service Factor	1.15	Phase	1
Efficiency	82.5 %	Power Factor	88
Duty	Continuous	Insulation Class	F
Design Code	N	KVA Code	H
Frame	215TC	Enclosure	Totally Enclosed Fan Cooled
Thermal Protection	Manual	Ambient Temperature	40 °C
Drive End Bearing Size	6207	Opp Drive End Bearing Size	6206
UL	Recognized	CSA	Y
CE	Y	IP Code	43
Number of Speeds	1		

Technical Specifications

Electrical Type	Capacitor Start Capacitor Run	Starting Method	Across The Line
Poles	4	Rotation	Selective Counterclockwise
Resistance Main	.164 Ohms	Mounting	Rigid Base
Motor Orientation	Horizontal	Drive End Bearing	Ball
Opp Drive End Bearing	Ball	Frame Material	Rolled Steel
Shaft Type	T	Shaft Diameter	1.125 in
Assembly/Box Mounting	F3		
Connection Drawing	005080.17	Outline Drawing	038147-1350

This is an uncontrolled document once printed or downloaded and is subject to change without notice. Date Created:11/01/2022

4

3

Uncontrolled Copy

2

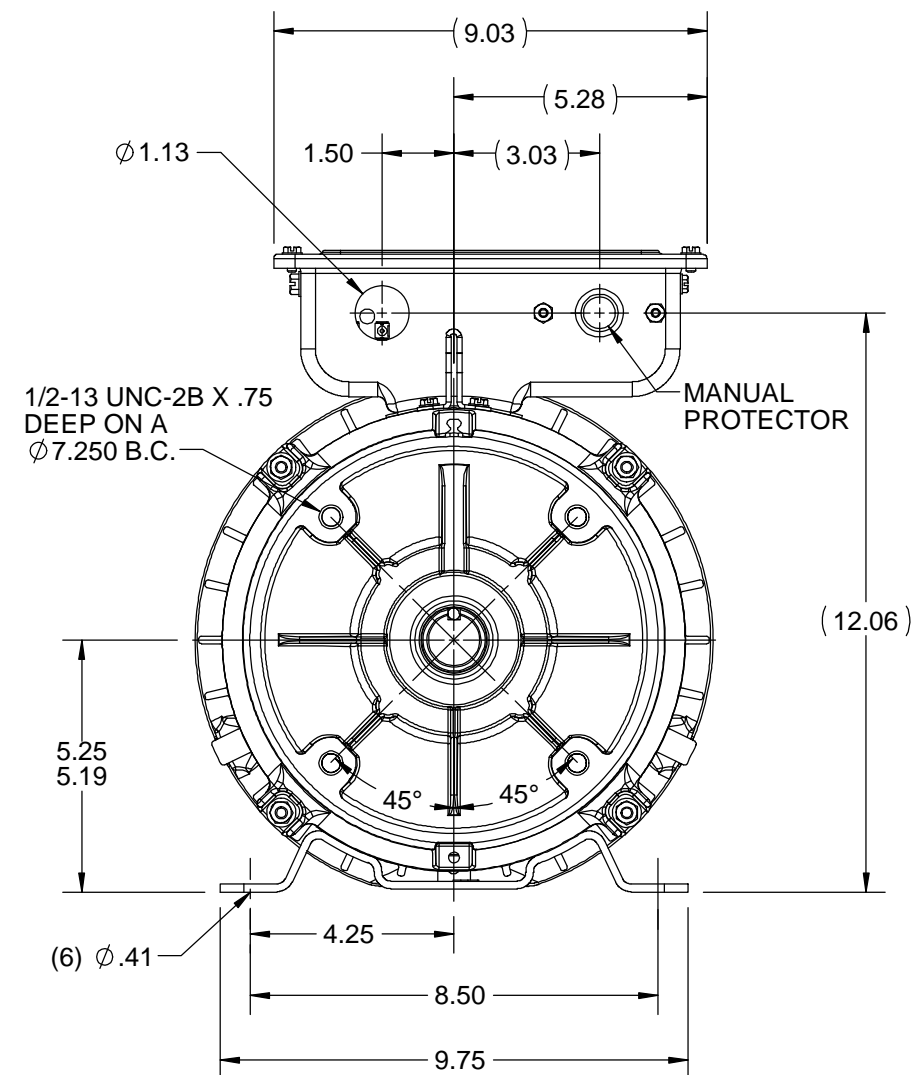
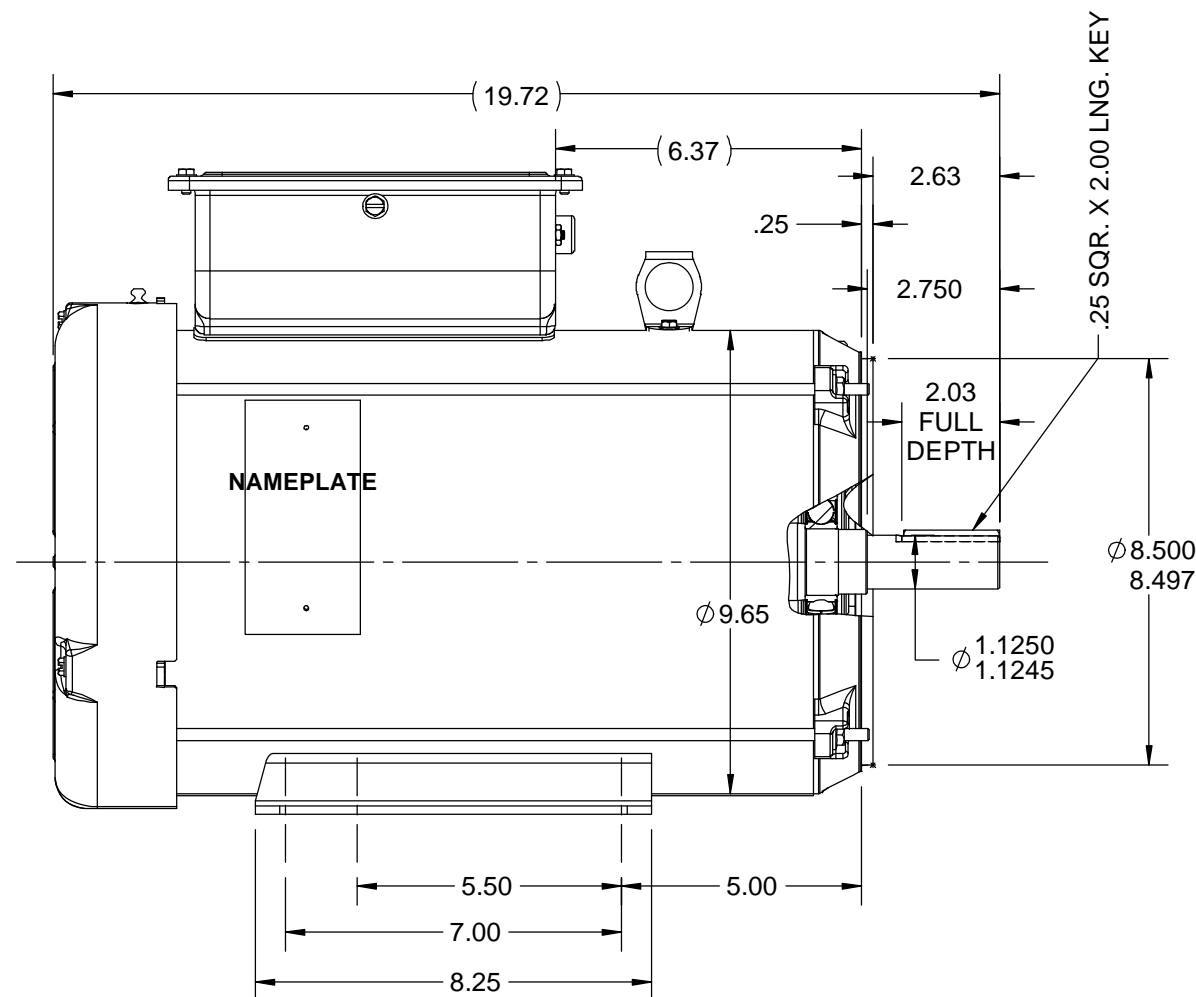
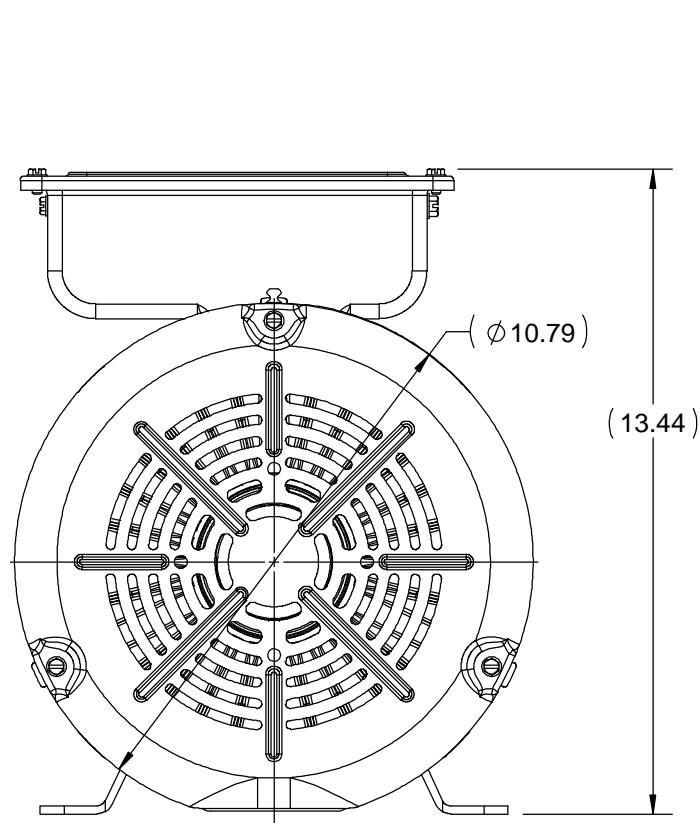
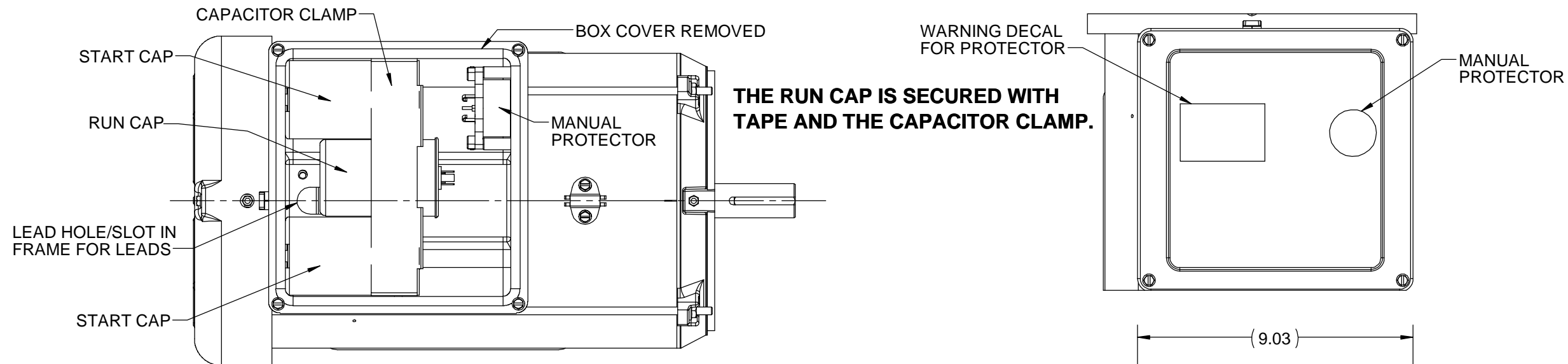
1

B

B

A


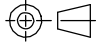
A



NOTE:
GASKETS THROUGHOUT
MAXIMUM FACE RUNOUT TO BE .004 T.I.R.
MAXIMUM PILOT ECCENTRICITY TO BE .004 T.I.R.
PERMISSIBLE SHAFT RUNOUT TO BE .002 T.I.R.

DRAWING REVISION	REVISION BY	DATE
D	MVG	01/09/2018
ECO	APPROVED BY	DATE
ECO-0137249	SR	01/09/2018
ECO DESCRIPTION		
CONDUIT BOX HOLE CHANGED TO DE SIDE		
COPYRIGHT REGAL BELOIT AMERICA, INC. ALL RIGHTS RESERVED. PROPRIETARY AND CONFIDENTIAL INFORMATION - THIS DOCUMENT IS THE PROPERTY OF REGAL BELOIT AMERICA, INC. ("OWNER") AND CONTAINS OWNER'S PROPRIETARY INFORMATION. ANY PERSON, CORPORATION OR OTHER FIRM RECEIVING IT IS DEEMED, BY RECEIVING IT, TO AGREE THAT IT, AND/OR ANY PART OF IT, SHALL NOT BE DISCLOSED TO ANY PERSON, CORPORATION OR OTHER ENTITY, DUPLICATED, AND/OR USED, EXCEPT AS EXPRESSLY APPROVED IN WRITING IN ADVANCE BY OWNER. THIS DOCUMENT SHALL BE RETURNED TO OWNER UPON REQUEST. IT MAY BE SUBJECT TO CERTAIN RESTRICTIONS UNDER APPLICABLE EXPORT CONTROL LAWS AND REGULATIONS.		

TOLERANCES UNLESS OTHERWISE SPECIFIED:			
DEC.	INCH	mm	ANGLE
.X	±0.1	[±2.5]	±0.5°
.XX	±0.03	[±0.76]	
.XXX	±0.005	[±0.127]	
.XXXX	±0.0005	[±0.0127]	
REMOVE BURRS & BREAK SHARP EDGES: .003/.015 [.076/.381] X 45° CORNER FILLETS: R.02 [.51] MACHINED SURFACES: 125 INCH 3.2 mm			
mm SHOWN IN [BRACKETS]			

DRAWN BY	MVG	 Regal Beloit America, Inc.	
DATE	03/15/17		
APPROVED BY	RG	DESCRIPTION	
DATE	03/15/17	OUTLINE	
REFERENCE	140130.00	210TZ FRAME - TEFC- RIGID "C"	
THIRD ANGLE PROJECTION		MATERIAL	PROCESS/FINISH
SIZE	B	DRAWING NUMBER	SHEET
		038147	1 OF 1

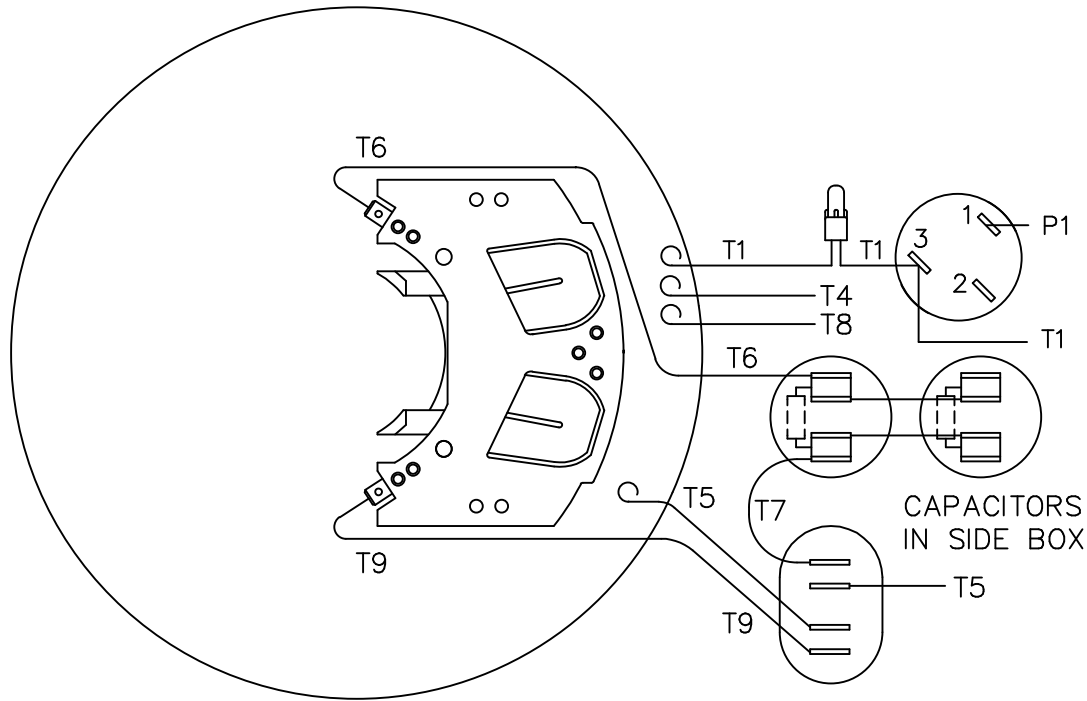
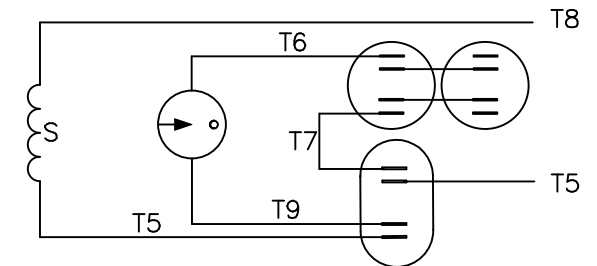
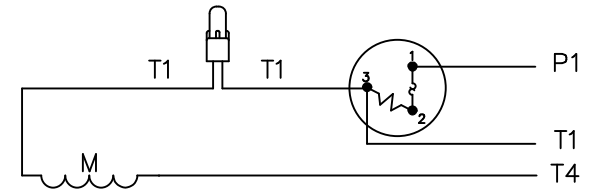
4

3

2

1

LINE LEADS



VIEW FROM OUTSIDE OF
MOTOR AT SWITCH END

CAUTION:
LEAD WIRE INSULATION TO
EXTEND MIN. OF 1/4" INTO
CONNECTOR INSULATION

ROTATION
FACING
LEAD END

L1

L2

JOIN &
INSULATE

C.C.W.

P1

T4,T5

T1,T8

C.W.

P1

T4,T8

T1,T5

TOLERANCES
UNLESS SPECIFIED

DEC. INCHES

.X ±.1

.XX ±.01

.XXX ±.005

.XXXX ±.0005

ANG ±1/2"

LEESON

ELECTRIC MOTORS
GEARMOTORS
AND DRIVES

DRAWN RDW 9/17/02

CHK

APPD

SCALE 1=2

REF 005080-16

FMF 140203

PREV

TITLE

EXTERNAL WIRING DIAGRAM
TYPE "K" WITH PROTECTOR

MAT'L.

DECAL 004015

FINISH

NO.

REVISION

BY & DATE

CHK

RFP

9/17/02

CAD FILE

00508017

SIZE

A

DRAWING NO.

005080-17

REV.

THIS DRAWING IN DESIGN AND DETAIL IS OUR PROPERTY AND MUST NOT BE USED EXCEPT
IN CONNECTION WITH OUR WORK ALL RIGHTS OF DESIGN AND INVENTION ARE RESERVED
THIS IS AN ELECTRONICALLY GENERATED DOCUMENT - DO NOT SCALE THIS PRINT

DIST

EC Declaration of Conformity

The undersigned representing
the manufacturer:

Regal Beloit America
100 East Randolph St.
Wausau, WI 54401

and the authorized representative
established within the Community:

Marathon Electric UK
6F Thistleton Road Ind. Estate
Market Overton
Oakham, Rutland LE15 7PP UK

are committed to providing customers with products that comply with applicable regulations and international protocols to which they are subject, including the requirements of the European Parliament Directive on the Harmonization of the laws relating to electrical equipment designed for use within certain voltage limits (2014/35/EU).

Regal Beloit America declares that the following product(s), to which this declaration relates, are in conformity with the relevant sections of the EC standards listed below.

This statement supersedes any statements previously issued pertaining to the product(s) listed below and is subject to change without notice.

Model No : 141382.00

(Model No. may contain prefix and/or suffix characters)

Catalog No : 141382.00

Rework No : N/A

Directives :

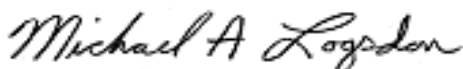
Low Voltage Directive 2014/35/EU

Harmonized Standards Used :

EN 60034-1: 2010 (IEC 60034-1: 2010)

EN 60034-5: 2001/A1:2007 (IEC 60034-5: 2000/A1:2006)

Authorized Representative:



Michael A. Logsdon
Vice President, Technology

Authorized Representative in the Community:



Julian Clark
Marketing Engineer

Created on 09/01/2022

CE 22