

PRODUCT INFORMATION PACKET



Model No: 141380.00

Catalog No: 141380.00

141380.00..15 HP..1750 RPM.215TC.TEFC.230/460 190/380.3 PH.60/50 HZ.CONT..40 DEG C.1.25 SF.C-FACE
ROUND.....

Regal and Leeson are trademarks of Regal Rexnord Corporation or one of its affiliated companies.

©2023 Regal Rexnord Corporation, All Rights Reserved. MC017097E





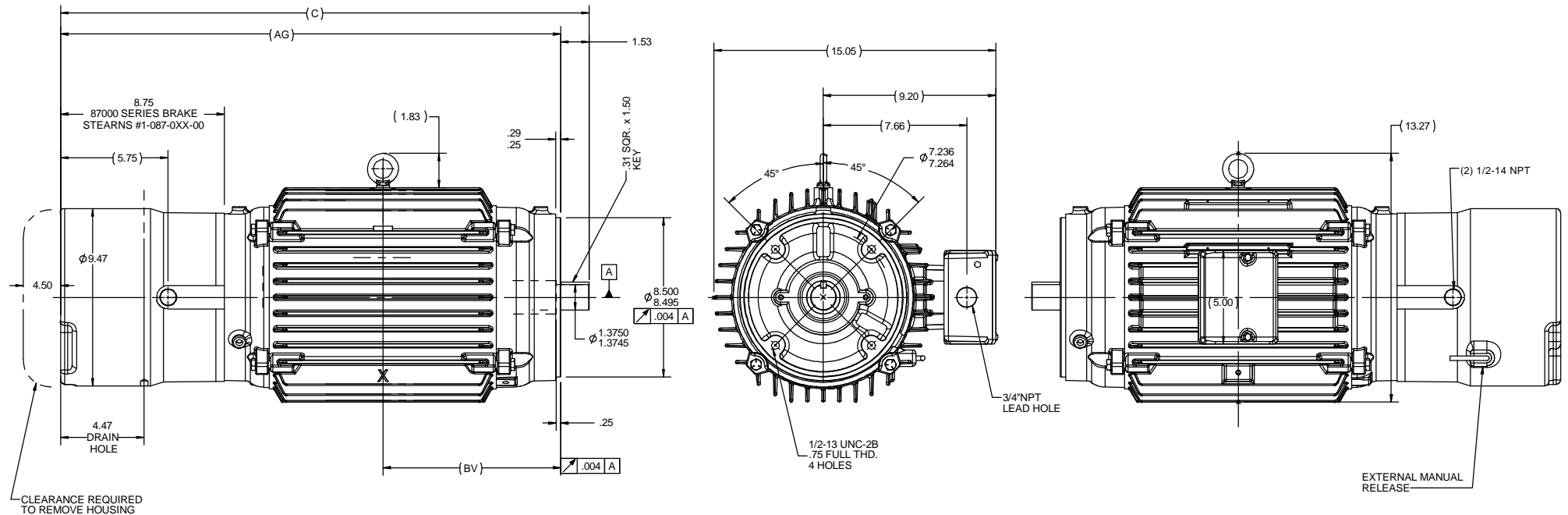
Nameplate Specifications

Phase	3	Output HP	15 & 15 Hp
Output KW	11.2 & 11.2 kW	Voltage	230/460 & 190/380 V
Speed	1680 & 1345 rpm	Service Factor	1.25 & 1.0
Frame	215TCZ	Enclosure	Totally Enclosed Non Ventilated
Thermal Protection	No Protection	Efficiency	82.6 & 79.5 %
Ambient Temperature	40 °C	Frequency	60 & 50 Hz
Current	38/19 & 47/23.5 A	Power Factor	88.5
Duty	30 Minute	Insulation Class	H
Design Code	A	KVA Code	G
Drive End Bearing Size	6309	Opp Drive End Bearing Size	6208
UL	Recognized	CSA	Y
CE	Y	IP Code	55
Number of Speeds	1		

Technical Specifications


Electrical Type	Squirrel Cage Induction Run	Starting Method	Across The Line
Poles	4	Rotation	Reversible
Resistance Main	.25 Ohms	Mounting	Round
Motor Orientation	Horizontal	Drive End Bearing	Ball
Opp Drive End Bearing	Ball	Frame Material	Cast Iron
Shaft Type	Single Special Extension	Assembly/Box Mounting	F2 ONLY
Outline Drawing	038165-1212	Connection Drawing	EE7308G

This is an uncontrolled document once printed or downloaded and is subject to change without notice. Date Created:06/23/2023



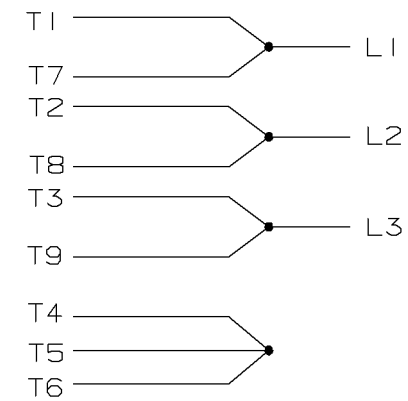
1. CONDUIT BOX CAN BE ROTATED IN 90° STEPS.
2. CONDUIT BOX CAN BE MOUNTED IN OPPOSITE SIDE BY REMOVING BRACKETS AND TURNING FRAME 180°. THIS MODIFICATION CAN BE PERFORMED ONLY BY THE ORIGINAL EQUIPMENT MANUFACTURER, OR BY A FACILITY THAT IS COVERED UNDER UNDERWRITERS LABORATORIES INC. CATEGORY PTKQ, TITLED "MOTOR AND GENERATORS.. REBUILT FOR USE IN HAZARDOUS LOCATION".
3. NAMEPLATE TO BE READ FROM CONDUIT BOX SIDE OF MOTOR.

1212	215	28.26	9.5	26.73
DASH	FRAME	C	BV	AG

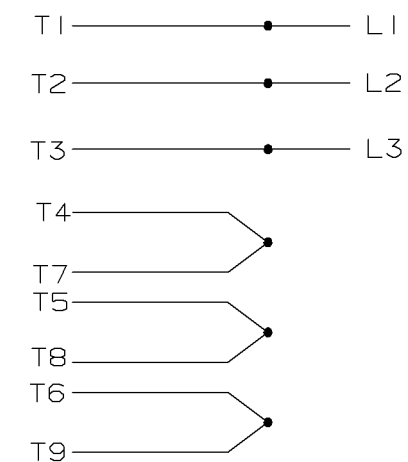
DRAWING REVISION		REVISION BY		DATE		TOLERANCES UNLESS OTHERWISE SPECIFIED:				DRAWN BY		 REGAL BELT America, Inc.		DESCRIPTION		OUTLINE		210 FR -TENV-C FACE WITHBRAKE		SHEET			
D										MVG													
ECO-0156226		APPROVED BY		DATE		DEC INCH mm ANGLE				DATE													
ECO-0156226		LST		11/23/2018		X .01 [2.5]				06/09/2017													
ECO DESCRIPTION						.XXX ±.005 [0.127]				APPROVED BY		GR											
BRAKE ORIENTATION CHANGED						.XXX ±.0005 [0.0127]				DATE		06/09/2017											
<p>COPYRIGHTED BELT, BECDY AMERICA, INC. ALL RIGHTS RESERVED. PROPRIETARY AND CONFIDENTIAL INFORMATION. THIS DOCUMENT IS THE PROPERTY OF REGAL, BELT AMERICA, INC. ("OWNER") AND CONTAINS OWNER'S PROPRIETARY INFORMATION. NO PART OF THIS DOCUMENT OR OTHER FROM WHICH THIS DOCUMENT WAS RECEIVED IS TO BE REPRODUCED OR TRANSMITTED IN ANY FORM OR BY ANY MEANS, ELECTRONIC OR MECHANICAL, INCLUDING PHOTOCOPYING, RECORDING, OR BY ANY INFORMATION STORAGE AND RETRIEVAL SYSTEM, WITHOUT THE WRITTEN PERMISSION OF REGAL, BELT AMERICA, INC. BY RECEIVING IT, TO AGREE THAT IT, AND ANY PART OF IT, SHALL NOT BE DISCLOSED TO ANY PERSON, CORPORATION OR OTHER ENTITY, DUPLICATED AND/OR USED, EXCEPT AS AUTHORIZED IN WRITING IN ADVANCE BY OWNER. THIS DOCUMENT SHALL BE RETURNED TO OWNER UPON REQUEST. IT MAY BE SUBJECT TO CERTAIN REVISIONS UNDER APPLICABLE EXPORT, IMPORT, TRADE, AND REGULATORY REQUIREMENTS.</p>																							
						mm SHOW IN (BRACKETS)				3/2		THIRD ANGLE PROJECTION		SIZE		DRAWING NUMBER		038165		SHEET 1 OF 1			

A- EE7308G

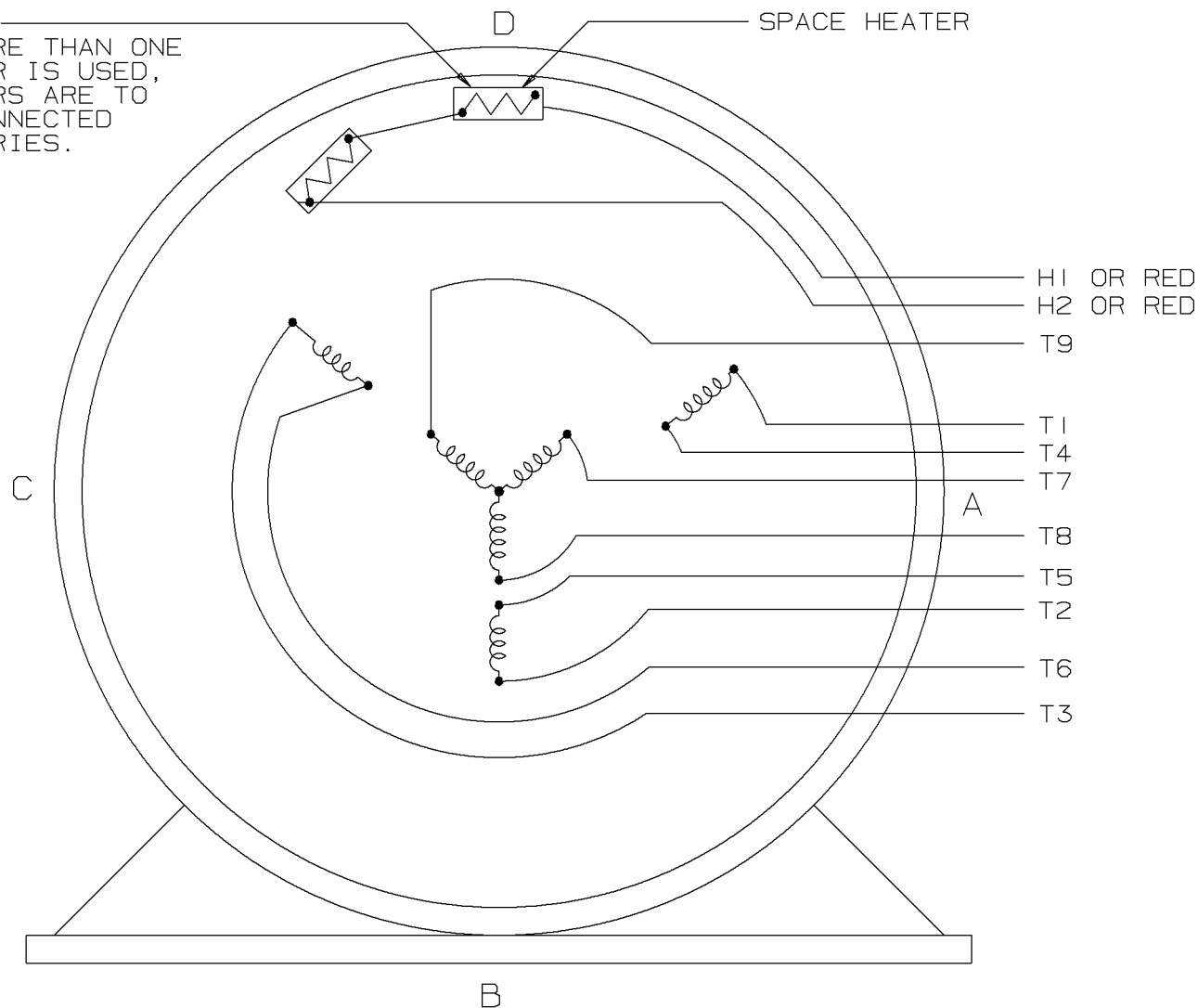
LOW VOLTAGE




HIGH VOLTAGE



NOTE:
IF MORE THAN ONE
HEATER IS USED,
HEATERS ARE TO
BE CONNECTED
IN SERIES.



VIEW OF TERMINAL END

				✓ MAX. SURFACE ROUGHNESS UNLESS NOTED OTHERWISE	UNLESS OTHERWISE SPECIFIED DIMENSIONS ARE IN INCHES TOL. ON XX± XXX±.005 XXXX±.0005 ANGLES±						
				MATL SPEC				DRAWN BY MSG	06-20-2000		
				FINISH				CHKD BY ML	06-20-2000		
4	06-22-2000	REDRAWN ON CAD	MU31540	MSG	REFERENCE DRW.	WAUSAU, WISCONSIN 54401			APPD BY ET	06-22-2000	
REV	DATE	CHANGE		NAME	PART NAME CONNECTION DIAGRAM THREE PHASE - DUAL VOLTAGE MOTOR					DRWG NO A - EE7308G	
		SHOP BOOK	PURCHASED	DISTRIBUTION - WA - LB - WP - LM - BR			CADD FILE NO.	EE7308G			

```
ERROR: undefined
OFFENDING COMMAND: reinitiali
STACK:
```