

PRODUCT INFORMATION PACKET

Model No: 141330.00

Catalog No: 141330.00

141330.00..7.5HP..1500.215TCZ.TEFC.220V.1PH.50HZ.CONT.40C.1.15SF.RIGID.....

Regal and are trademarks of Regal Rexnord Corporation or one of its affiliated companies.
©2022 Regal Rexnord Corporation, All Rights Reserved. MC017097E



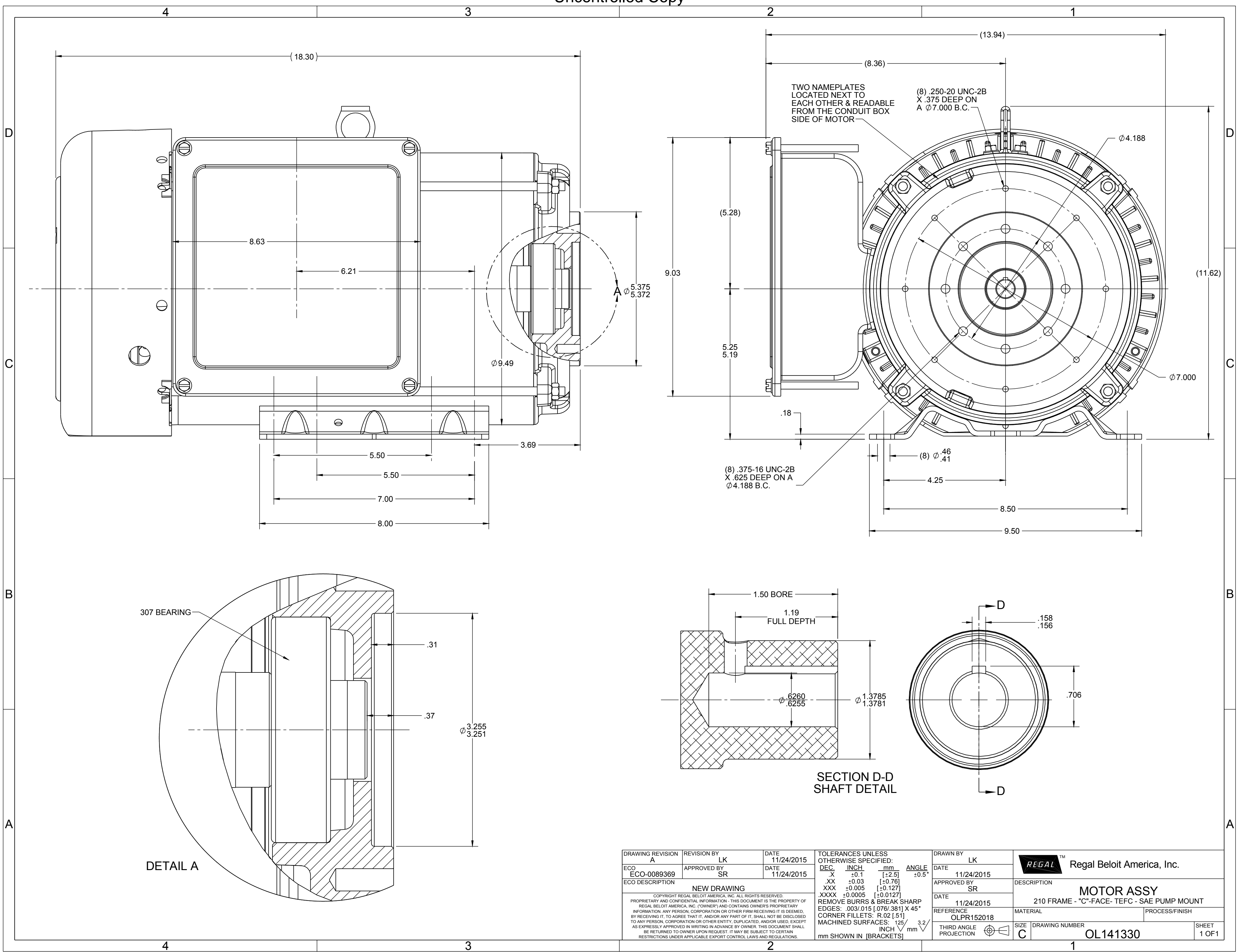
Nameplate Specifications

Output HP	7.50 Hp	Output KW	5.6 kW
Frequency	50 Hz	Voltage	220 V
Current	31.5 A	Speed	1464 rpm
Service Factor	1.15	Phase	1
Efficiency	86.9 %	Power Factor	92.3
Duty	Continuous	Insulation Class	F
Design Code	L	KVA Code	N
Frame	215TCVZ	Enclosure	Totally Enclosed Fan Cooled
Thermal Protection	Manual	Ambient Temperature	40 °C
Drive End Bearing Size	6307	Opp Drive End Bearing Size	6206
UL	Recognized	CSA	Y
CE	Y	IP Code	43
Number of Speeds	1		

Technical Specifications

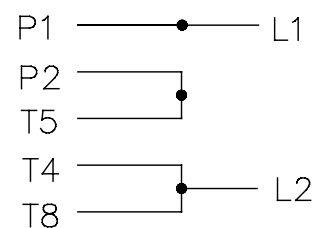
Electrical Type	Capacitor Start Capacitor Run	Starting Method	Across The Line
Poles	4	Rotation	Selective Counterclockwise
Resistance Main	.2214 Ohms	Mounting	Rigid Base
Motor Orientation	Shaft Down	Drive End Bearing	Ball
Opp Drive End Bearing	Ball	Frame Material	Rolled Steel
Shaft Type	Single Special Extension	Shaft Diameter	3.255 in
Assembly/Box Mounting	W6		
Connection Drawing	EE9048RJ	Outline Drawing	OL141330

This is an uncontrolled document once printed or downloaded and is subject to change without notice. Date Created:11/01/2022

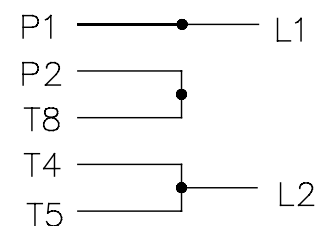


EE9048RJ

C.W. ROTATION

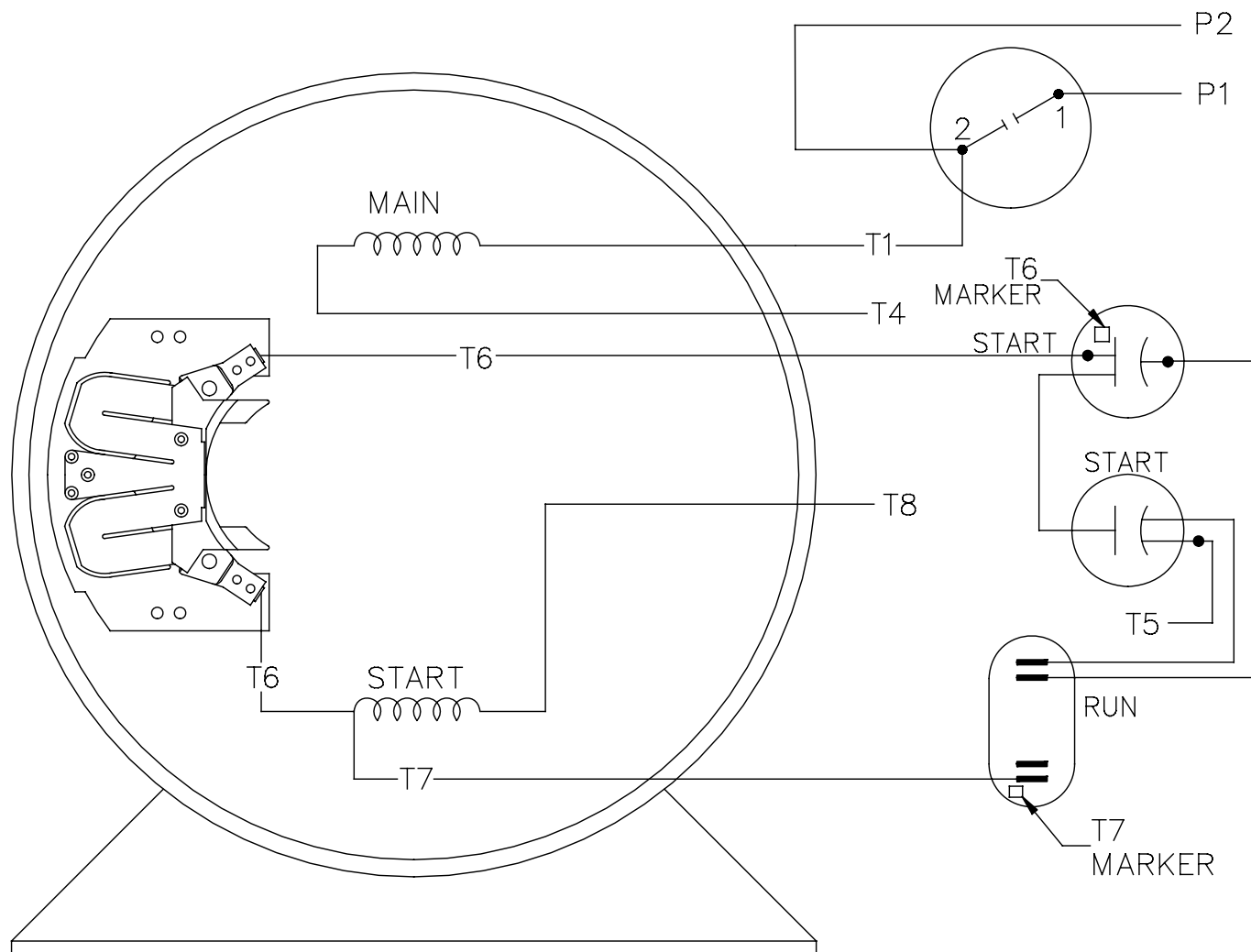


C.C.W. ROTATION




CONNECT:
START CAPACITORS IN PARALLEL

SINGLE VOLTAGE
CAPACITOR START
CAPACITOR RUN
REVERSIBLE



VIEW OF TERMINAL END

				TOLERANCES UNLESS SPECIFIED		 Regal Beloit America, Inc.	DRAWN RK 11/17/15	
				DEC.	INCHES		CHK	
				.X	±.1	TITLE CONNECTION DIAGRAM	APPD	
				.XX	±.02		SCALE	1=1
				.XXX	±.005		REF	EXPR152018
				.XXXX	±.0005		FMF	141199.00
NO.	REVISION	BY & DATE	CHK	ANG	±7'30"	FINISH	PREV	
THIS DRAWING IN DESIGN AND DETAIL IS OUR PROPERTY AND MUST NOT BE USED EXCEPT IN CONNECTION WITH OUR WORK ALL RIGHTS OF DESIGN AND INVENTION ARE RESERVED THIS IS AN ELECTRONICALLY GENERATED DOCUMENT – DO NOT SCALE THIS PRINT				RFP		CAD FILE EE9048RJ	SIZE	DRAWING NO. PAGE OF REV.
				DIST			A	EE9048RJ

EC Declaration of Conformity

The undersigned representing
the manufacturer:

Regal Beloit America
100 East Randolph St.
Wausau, WI 54401

and the authorized representative
established within the Community:

Marathon Electric UK
6F Thistleton Road Ind. Estate
Market Overton
Oakham, Rutland LE15 7PP UK

are committed to providing customers with products that comply with applicable regulations and international protocols to which they are subject, including the requirements of the European Parliament Directive on the Harmonization of the laws relating to electrical equipment designed for use within certain voltage limits (2014/35/EU).

Regal Beloit America declares that the following product(s), to which this declaration relates, are in conformity with the relevant sections of the EC standards listed below.

This statement supersedes any statements previously issued pertaining to the product(s) listed below and is subject to change without notice.

Model No : 141330.00

(Model No. may contain prefix and/or suffix characters)

Catalog No : 141330.00

Rework No : N/A

Directives :

Low Voltage Directive 2014/35/EU

Harmonized Standards Used :

EN 60034-1: 2010 (IEC 60034-1: 2010)

EN 60034-5: 2001/A1:2007 (IEC 60034-5: 2000/A1:2006)

Authorized Representative:



Michael A. Logsdon
Vice President, Technology

Authorized Representative in the Community:



Julian Clark
Marketing Engineer

Created on 09/01/2022

CE 22