

PRODUCT INFORMATION PACKET



Model No: 141234.00

Catalog No: 141234.00

General Purpose Motor, 7.50 & 5 HP, 3 Ph, 60 & 50 Hz, 230/460 & 190/380 V, 3600 & 3000 RPM,
213TC Frame, TEFC



Regal and Leeson are trademarks of Regal Rexnord Corporation or one of its affiliated companies.

©2023 Regal Rexnord Corporation, All Rights Reserved. MC017097E





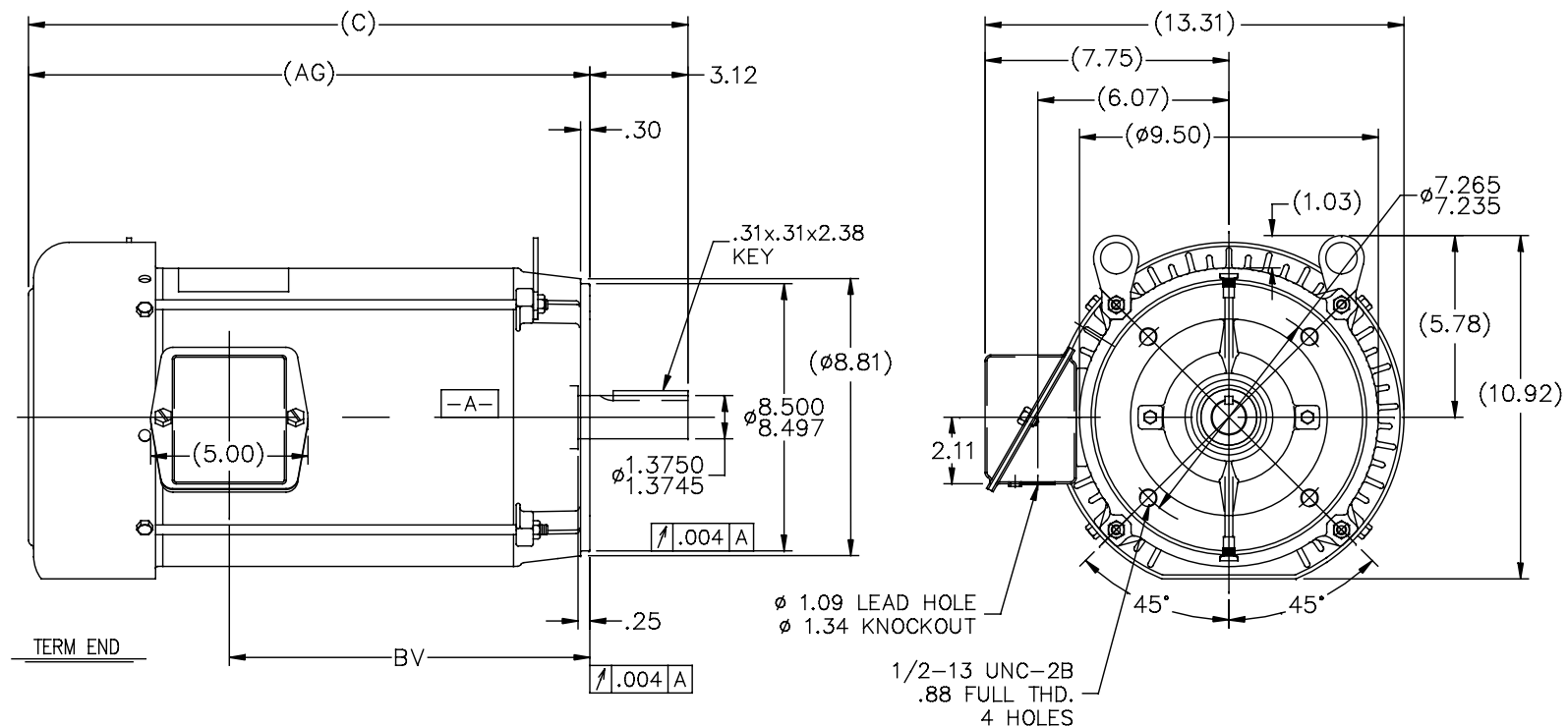
Nameplate Specifications

Phase	3	Output HP	7.50 & 5 Hp
Output KW	5.6 & 3.7 kW	Voltage	230/460 & 190/380 V
Speed	3525 & 2945 rpm	Service Factor	1.0 & 1.0
Frame	213TC	Enclosure	Totally Enclosed Fan Cooled
Thermal Protection	No Protection	Efficiency	89.5 & 88.5 %
Ambient Temperature	40 °C	Frequency	60 & 50 Hz
Current	18.6/9.3 & 16/8 A	Power Factor	84.6
Duty	Continuous	Insulation Class	F
Design Code	B	KVA Code	H
Drive End Bearing Size	6309	Opp Drive End Bearing Size	6206
UL	Recognized	CSA	Y
CE	Y	IP Code	43
Number of Speeds	1		

Technical Specifications


Electrical Type	Squirrel Cage Induction Run	Starting Method	Across The Line
Poles	2	Rotation	Reversible
Resistance Main	.1725 Ohms	Mounting	Round
Motor Orientation	Horizontal	Drive End Bearing	Ball
Opp Drive End Bearing	Ball	Frame Material	Rolled Steel
Shaft Type	T	Overall Length	19.46 in
Frame Length	9.65 in	Shaft Diameter	1.375 in
Shaft Extension	3.12 in	Assembly/Box Mounting	F1/F2 CAPABLE
Connection Drawing	005010.01	Outline Drawing	SS86634-965

SS86634



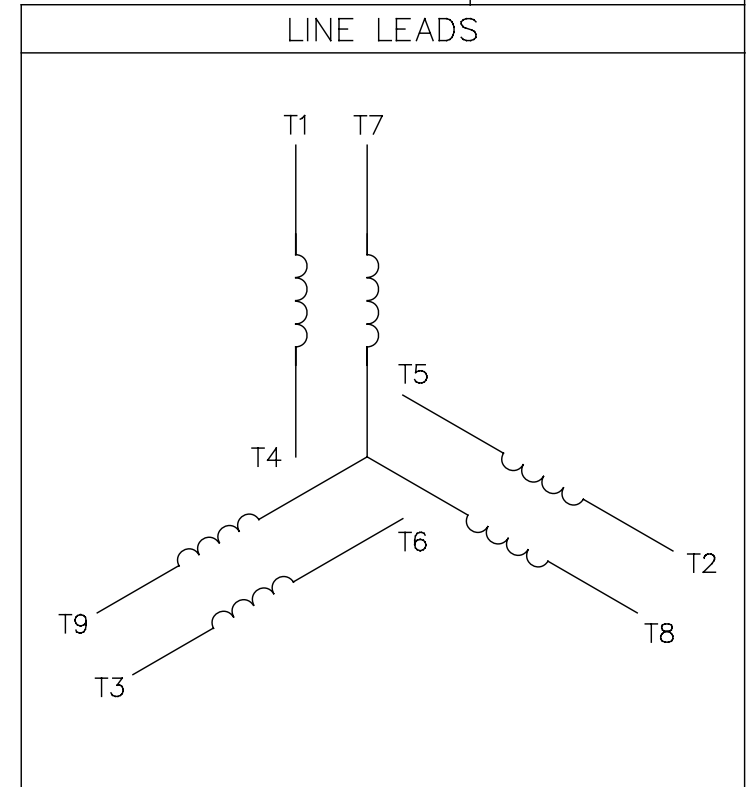
DASH	FR.	C	AG	BV	MOUNTING
965	213T	19.46	16.34	9.96	
1115	213/15T	20.96	17.84	11.46	
1240	213/15T	22.21	19.09	12.71	

NOTES:
1. NAMEPLATE TO BE READ FROM C'BOX SIDE OF MOTOR.
2. BOX CAN BE MOUNTED IN 90° STEPS.


6	UPDATED TO REGAL LOGO	SAJ 07/21/15	AJA	TOLERANCES UNLESS SPECIFIED		 Regal Beloit America, Inc.	DRAWN DRS 10-02-1996			
5	REDRAWN IN AUTOCAD	TAT 06-29-2004	ML	DEC.	INCHES		CHK ML 10-03-1996			
4	UPDATED C' BOX GEOMETRY CN 28425	DRS 01-31-2000		.X	±.1		APPD DN 10-04-1996			
3	REMOVED GROUND SCREW FROM FRAME CN 24453	DRS 10-01-1997		.XX	±.03		SCALE 1=5			
2	REMOVED NOTE: BOX CAN BE MOUNTED ON OPPOSITE	MJD 09-02-1997		.XXX	±.005		REF			
	SIDE OF MOTOR CN 23925-459			.XXXX	±.0005	MAT'L	FMF			
NO.	REVISION	BY & DATE	CHK	ANG	±7°30"	FINISH	PREV			
THIS DRAWING IN DESIGN AND DETAIL IS OUR PROPERTY AND MUST NOT BE USED EXCEPT IN CONNECTION WITH OUR WORK ALL RIGHTS OF DESIGN AND INVENTION ARE RESERVED THIS IS AN ELECTRONICALLY GENERATED DOCUMENT - DO NOT SCALE THIS PRINT			RFP	CAD FILE ss86634			SIZE A	DRAWING NO. SS86634	PAGE OF	REV. 6
			DIST LB							

005010-01

VIEW FROM OUTSIDE OF MOTOR AT SWITCH END.



VOLTAGE	L1	L2	L3	JOIN & INSULATE
HIGH	T1	T2	T3	(T4,T7) (T5,T8) (T6,T9)
LOW	T1,T7	T2,T8	T3,T9	T4,T5,T6

				TOLERANCES UNLESS SPECIFIED		 Regal Beloit America, Inc.			DRAWN RDW 04/12/02					
				DEC.	INCHES				CHK					
				.X	±.1				APPD					
				.XX	±.01				SCALE 1=1					
				.XXX	±.005	TITLE EXTERNAL WIRING DIAGRAM 3 PHASE W/O PROTECTOR			REF FIG.2-51					
A	UPDATED TO REGAL LOGO	SAJ 06/26/15	AJY	.XXXX	±.0005				MAT'L. DECAL - 004014			FMF		
NO.	REVISION	BY & DATE	CHK	ANG	±1/2"	FINISH			PREV					
THIS DRAWING IN DESIGN AND DETAIL IS OUR PROPERTY AND MUST NOT BE USED EXCEPT IN CONNECTION WITH OUR WORK ALL RIGHTS OF DESIGN AND INVENTION ARE RESERVED THIS IS AN ELECTRONICALLY GENERATED DOCUMENT - DO NOT SCALE THIS PRINT			RFP		04/12/02		CAD FILE		00501001		SIZE	DRAWING NO.		REV.
			DIST		BRF-NLV						A	005010-01		A



CERTIFICATION DATA SHEET

**1051 CHEYENNE AVE.
GRAFTON, WI 53024
PH. 262-377-8810**

CONN. DIAGRAM: 005010.01

CATALOG #: 141234.00

OUTLINE: SS86634-965

MOUNTING: F1/F2 CAPABLE

WINDING #: K2132124 2

TYPICAL MOTOR PERFORMANCE DATA

HP	kW	SYNC. RPM	F.L. RPM	FRAME	ENCLOSURE	KVA CODE	DESIGN
7 1/2&5	5.60&3.70	3600	3525&2945	213TC	TEFC	H	B

PH	Hz	VOLTS	AMPS	START TYPE	DUTY	INSL	S.F.	AMB°C
3	60/50	230/460&190/380	18.6/9.3&16/8	ACROSS THE LINE	CONTINUOUS	F4	1.0/1.0	40

FULL LOAD EFF:	89.5&88.5	3/4 LOAD EFF:	88.9	1/2 LOAD EFF:	88.1	GTD. EFF		ELEC. TYPE
FULL LOAD PF:	84.6&80.2	3/4 LOAD PF:	79.7	1/2 LOAD PF:	68.4	89.5		SQ CAGE IND RUN

F.L. TORQUE	LOCKED ROTOR AMPS	L.R. TORQUE	B.D. TORQUE	F.L. RISE°C
11.2 LB-FT	126 / 63	19.3 LB-FT 172 %	33 LB-FT 295 %	55

SOUND PRESSURE @ 3 FT.	SOUND POWER	ROTOR WK^2	MAX. WK^2	SAFE STALL TIME	STARTS / HOUR	APPROX. MOTOR WGT
72 dBA	82 dBA	0.55 LB-FT^2	12 LB-FT^2	20 SEC.	2	165 LBS.

*** SUPPLEMENTAL INFORMATION ***

DE BRACKET TYPE	ODE BRACKET TYPE	MOUNT TYPE	ORIENTATION	SEVERE DUTY	HAZARDOUS LOCATION	DRIP COVER	SCREENS	PAINT
C-FACE	STANDARD	ROUND	HORIZONTAL	FALSE	NONE	FALSE	NONE	GREEN - LEESON WATTSaver

BEARINGS		GREASE	SHAFT TYPE	SPECIAL DE	SPECIAL ODE	SHAFT MATERIAL	FRAME MATERIAL
DE	ODE						
BALL	BALL	POLYREX EM	T	NONE	NONE	1045 HOT ROLLED (C-204)	ROLLED STEEL
6309	6206						

THERMO-PROTECTORS				THERMISTORS	CONTROL	SPACE HEATERS
THERMOSTATS	PROTECTORS	WDG RTDs	BRG RTDs			
NONE	NOT	NONE	NONE	NONE	FALSE	NONE VOLTS

*

N

O

T

E

S

INVERTER TORQUE: NONE
INV. HP SPEED RANGE: NONE

ENCODER: NONE
NONE NONE
NONE NONE PPR

BRAKE: NONE NONE
NONE P/N NONE
NONE NONE
NONE FT-LB NONE V NONE Hz



Model No 141234.00

Catalog No 141234.00

LEESON ELECTRIC CORPORATION

TYPICAL PERFORMANCE CURVE for AC MOTOR

Curve at

460 Volts
60 HZ
7.5 HP

HP 7.5&5

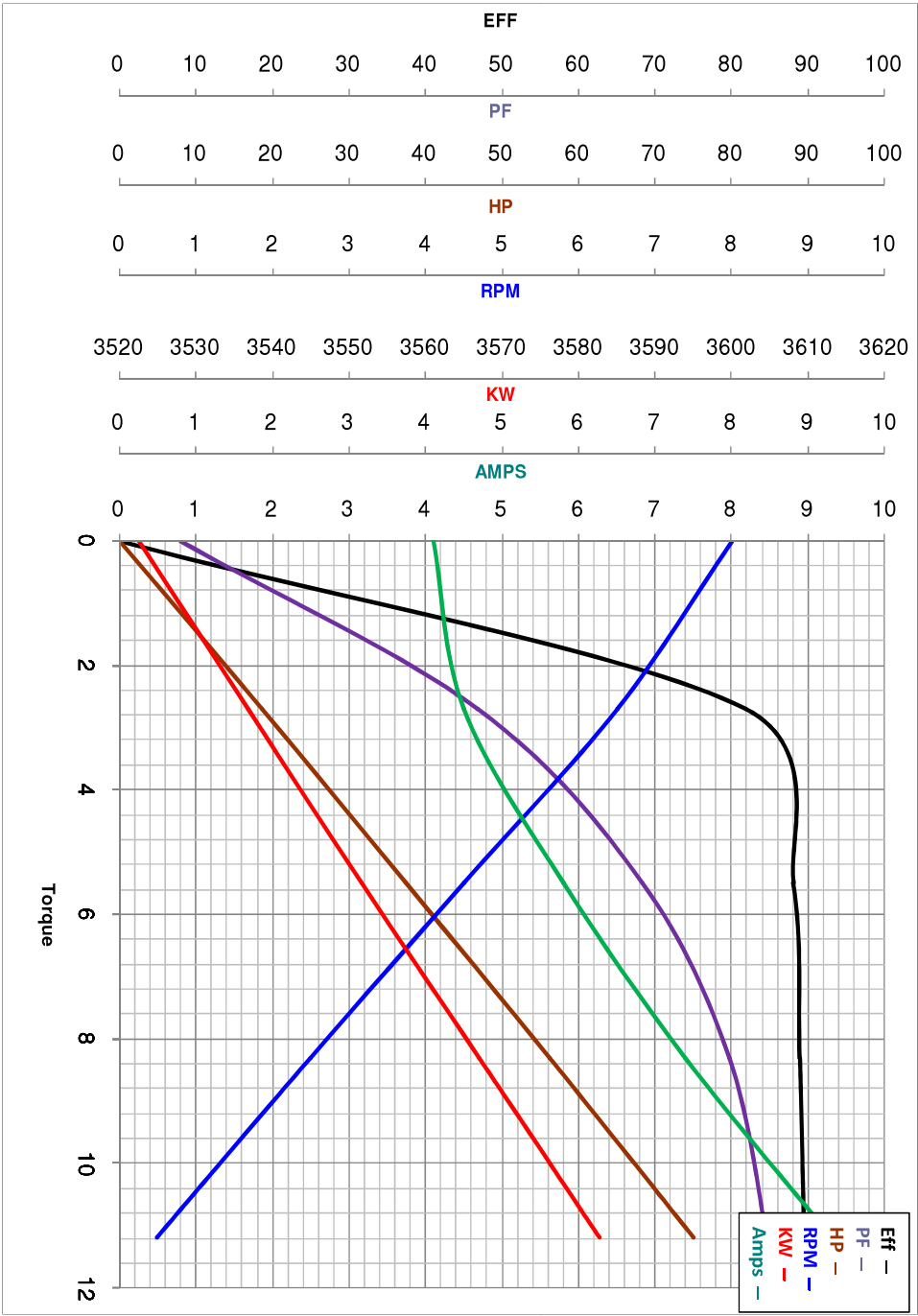
PHASE 3

VOLTS 230/460&190/380

HZ 60&50

RPM

3525&2945



Torque in Lb.Ft

FL TORQUE 11.2 Lb.Ft
BD TORQUE 33.0 Lb.Ft
LR TORQUE 19.3 Lb.Ft
WINDING K2132124-2

FL AMPS 18.6/9.3
PU TORQUE 19.0 Lb.Ft
LR AMPS 63

Date 11/5/2018