

PRODUCT INFORMATION PACKET



Model No: 141182.00

Catalog No: 141182.00

..7.5HP/3.8HP..1725/850 RPM.P215T.TEFC.230VAC.3PH.60HZ.CONT.40C.1.0SF.RIGID BASE.C215T48FB56A.....

.....

Regal and Leeson are trademarks of Regal Rexnord Corporation or one of its affiliated companies.

©2024 Regal Rexnord Corporation, All Rights Reserved. MC017097E





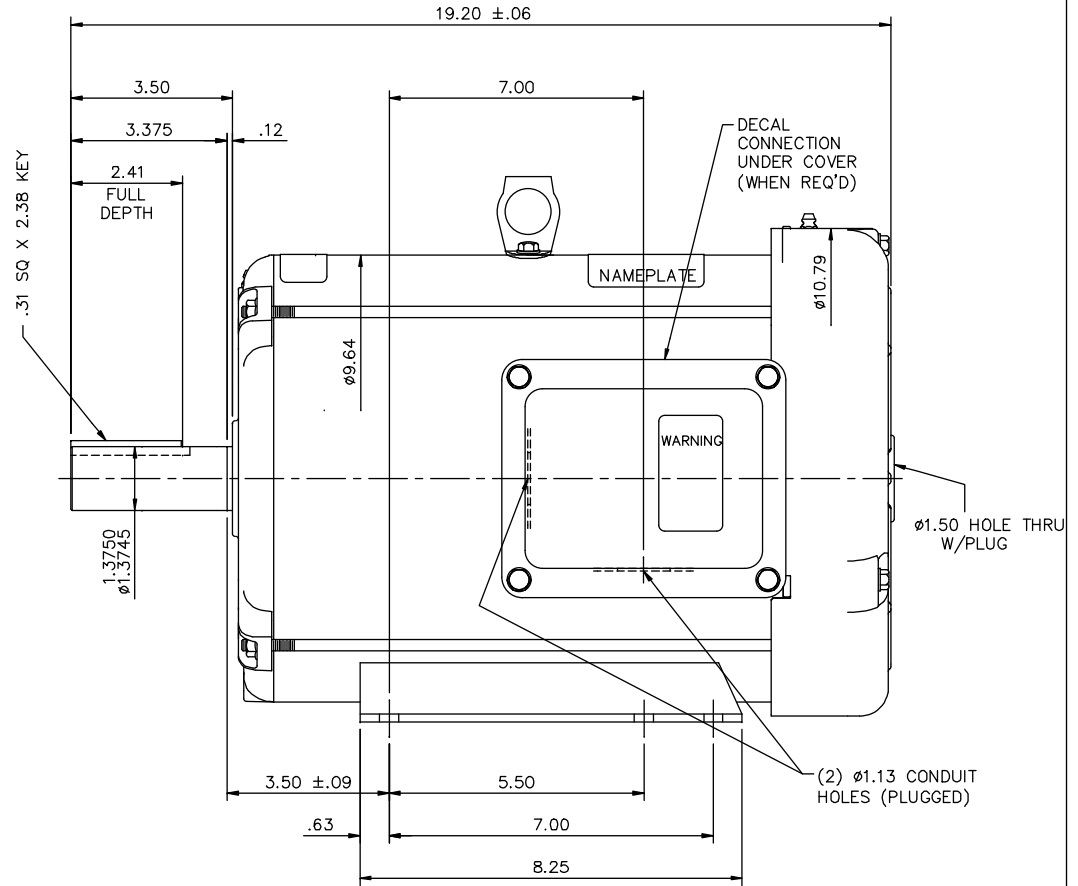
Nameplate Specifications

Phase	3	Output HP	7.50,3.80 Hp
Output KW	5.6 kW	Voltage	230 V
Speed	1725,882 rpm	Service Factor	1
Frame	215T	Enclosure	Totally Enclosed Fan Cooled
Thermal Protection	No Protection	Efficiency	85 %
Ambient Temperature	40 °C	Frequency	60 Hz
Current	19,19.8 A	Power Factor	87.5
Duty	Continuous	Insulation Class	H
Design Code	1CH	KVA Code	K
Drive End Bearing Size	6207	Opp Drive End Bearing Size	6206
UL	Recognized	CSA	Y
CE	Y	IP Code	43
Number of Speeds	2		

Technical Specifications

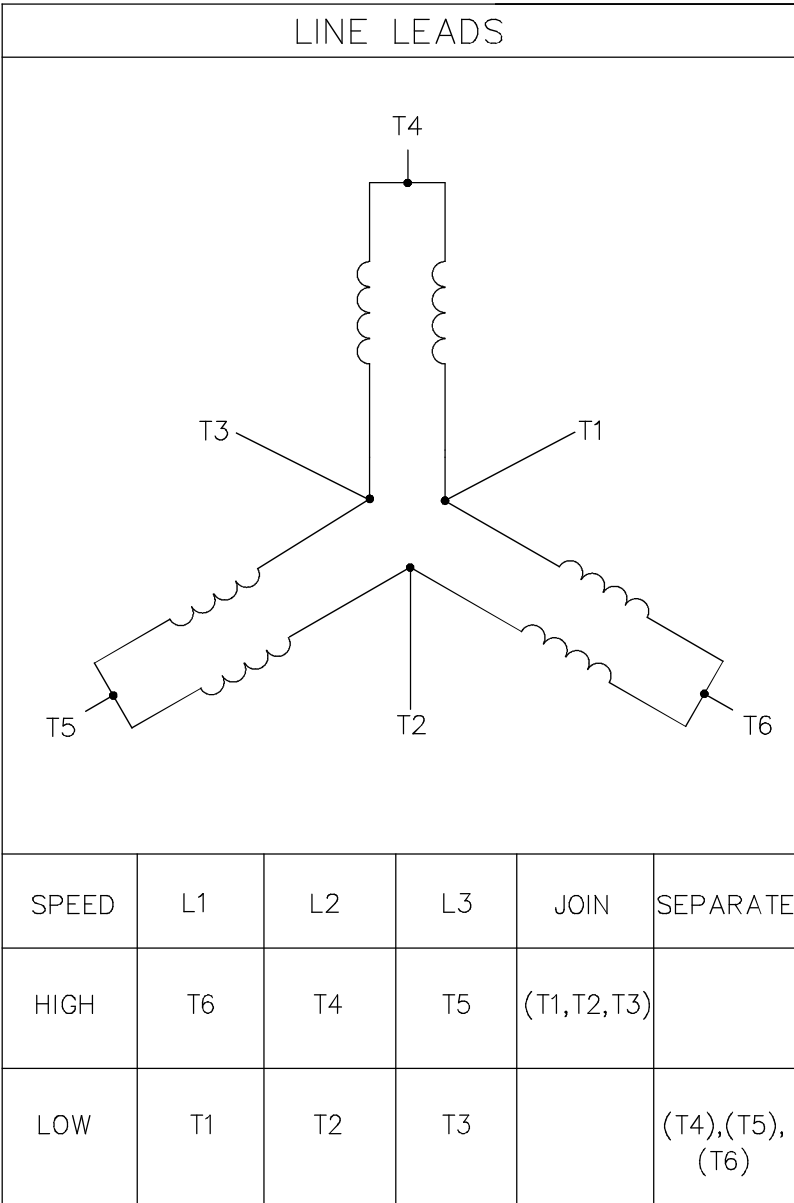
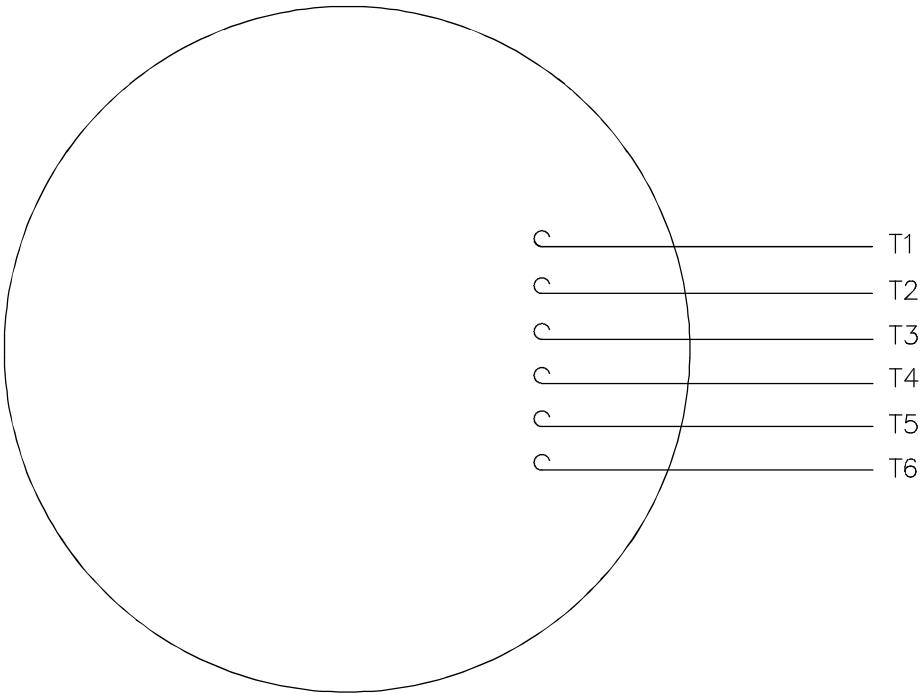
Electrical Type	Squirrel Cage Induction Run	Starting Method	Across The Line
Poles	4/8	Rotation	Reversible
Resistance Main	0 Ohms	Mounting	Rigid Base
Motor Orientation	Horizontal	Drive End Bearing	Ball
Opp Drive End Bearing	Ball	Frame Material	Rolled Steel
Shaft Type	T	Shaft Diameter	1.375 in
Assembly/Box Mounting	F2 ONLY		
Outline Drawing	OL141182	Connection Drawing	005148.01


This is an uncontrolled document once printed or downloaded and is subject to change without notice. Date Created:09/24/2024



7/25/2013 7:07:20 AM - Converted by Connexus

VIEW FROM OUTSIDE OF MOTOR AT SWITCH END.



				TOLERANCES UNLESS SPECIFIED			DRAWN GR 09/17/12		
				DEC.	INCHES		CHK AK 09/17/12		
				.X	±.1		APPD		
				.XX	±.01		TITLE EXT. WIRING DIAGRAMS 3 PHASE W/O PROTECTOR	SCALE 1=1	
				.XXX	±.005			REF 005148-01	
				.XXXX	±.0005	MAT'L.DECAL: 004183 2SPEED/1WINDING/CONSTANT TORQUE	FMF		
NO.	REVISION	BY & DATE	CHK	ANG	±1/2"	FINISH	PREV		
THIS DRAWING IN DESIGN AND DETAIL IS OUR PROPERTY AND MUST NOT BE USED EXCEPT IN CONNECTION WITH OUR WORK ALL RIGHTS OF DESIGN AND INVENTION ARE RESERVED THIS IS AN ELECTRONICALLY GENERATED DOCUMENT – DO NOT SCALE THIS PRINT			RFP		CAD FILE 00514801CY		SIZE	DRAWING NO.	REV.
			DIST		4 of 5		A	005148-01CY	

EC Declaration of Conformity

The undersigned representing
the manufacturer:

Regal Beloit America
100 East Randolph St.
Wausau, WI 54401

and the authorized representative
established within the Community:

Marathon Electric UK
6F Thistleton Road Ind. Estate
Market Overton
Oakham, Rutland LE15 7PP UK

are committed to providing customers with products that comply with applicable regulations and international protocols to which they are subject, including the requirements of the European Parliament Directive on the Harmonization of the laws relating to electrical equipment designed for use within certain voltage limits (2014/35/EU).

Regal Beloit America declares that the following product(s), to which this declaration relates, are in conformity with the relevant sections of the EC standards listed below.

This statement supersedes any statements previously issued pertaining to the product(s) listed below and is subject to change without notice.

Model No : 141182.00

(Model No. may contain prefix and/or suffix characters)

Catalog No : 141182.00

Rework No : N/A

Directives :

Low Voltage Directive 2014/35/EU

Harmonized Standards Used :

EN 60034-1: 2010 (IEC 60034-1: 2010)

EN 60034-5: 2001/A1:2007 (IEC 60034-5: 2000/A1:2006)

Authorized Representative:



Michael A. Logsdon
Vice President, Technology

Authorized Representative in the Community:



Julian Clark
Marketing Engineer

Created on 09/01/2022

CE 22