

# PRODUCT INFORMATION PACKET



Model No: 141162.00

Catalog No: 141162.00

141162.00..7.5HP..3540RPM.213TCZ.TEFC.208-230/460VAC.3PH.60HZ.CONT.40C.1.0SF.....NOT.....

Regal and Leeson are trademarks of Regal Rexnord Corporation or one of its affiliated companies.  
©2024 Regal Rexnord Corporation, All Rights Reserved. MC017097E





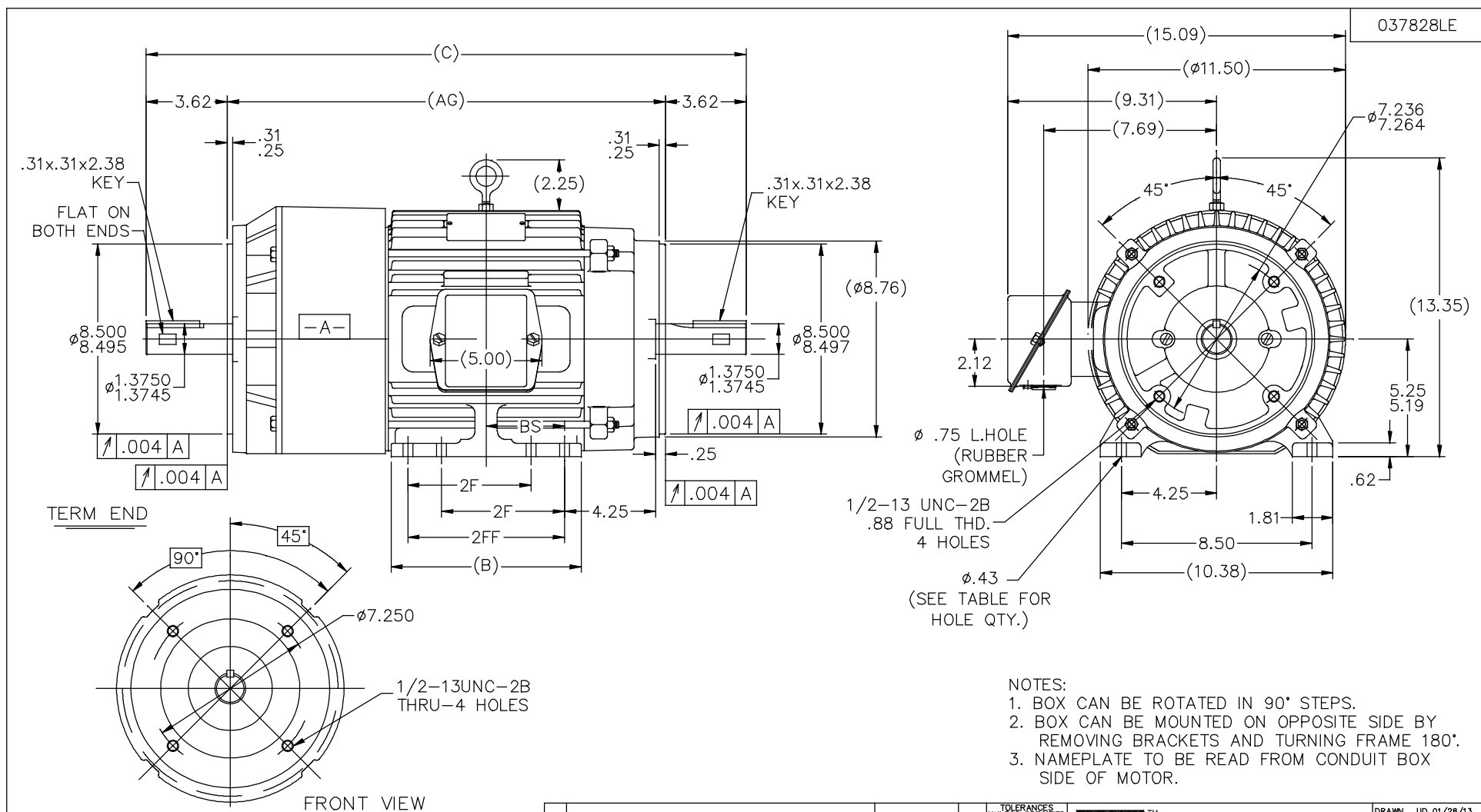
## Nameplate Specifications

|                        |               |                            |                             |
|------------------------|---------------|----------------------------|-----------------------------|
| Phase                  | 3             | Output HP                  | 7.50 Hp                     |
| Output KW              | 5.6 kW        | Voltage                    | 230/460 V                   |
| Speed                  | 3540 rpm      | Service Factor             | 1.0                         |
| Frame                  | 213TCZ        | Enclosure                  | Totally Enclosed Fan Cooled |
| Thermal Protection     | No Protection | Efficiency                 | 90.2 %                      |
| Ambient Temperature    | 40 °C         | Frequency                  | 60 Hz                       |
| Current                | 17.8/8.9 A    | Power Factor               | 87                          |
| Duty                   | Continuous    | Insulation Class           | H                           |
| Design Code            | INV           | KVA Code                   | H                           |
| Drive End Bearing Size | 6309          | Opp Drive End Bearing Size | 6207                        |
| UL                     | Recognized    | CSA                        | N                           |
| CE                     | N             | IP Code                    | 43                          |
| Number of Speeds       | 1             |                            |                             |


## Technical Specifications

|                       |                              |                    |               |
|-----------------------|------------------------------|--------------------|---------------|
| Electrical Type       | Squirrel Cage Inverter Duty  | Starting Method    | Inverter Only |
| Poles                 | 2                            | Rotation           | Reversible    |
| Resistance Main       | 1.163 Ohms                   | Mounting           | Rigid Base    |
| Motor Orientation     | Horizontal                   | Drive End Bearing  | Ball          |
| Opp Drive End Bearing | Ball                         | Frame Material     | Cast Iron     |
| Shaft Type            | Special Extension Both Sides | Shaft Diameter     | 1.375 in      |
| Assembly/Box Mounting | F1/F2 CAPABLE                | Inverter Load      | VARIABLE 10:1 |
| Outline Drawing       | 037828LE-875                 | Connection Drawing | A-EE7308-LE   |

This is an uncontrolled document once printed or downloaded and is subject to change without notice. Date Created:09/12/2024



- NOTES:
1. BOX CAN BE ROTATED IN 90° STEPS.
  2. BOX CAN BE MOUNTED ON OPPOSITE SIDE BY REMOVING BRACKETS AND TURNING FRAME 180°.
  3. NAMEPLATE TO BE READ FROM CONDUIT BOX SIDE OF MOTOR.

|   |  |  |  |  |  |  |  |  |  |  |  |                             |  |  |  |  |                   |                                |  |  |                   |  |                                   |  |
|---|--|--|--|--|--|--|--|--|--|--|--|-----------------------------|--|--|--|--|-------------------|--------------------------------|--|--|-------------------|--|-----------------------------------|--|
| FRONT VIEW                                      |  |  |  |  |  |  |  |  |  |  |  | TOLERANCES UNLESS SPECIFIED |  |  |  Regal Beloit America, Inc. |  | DRAWN UD 01/28/13 |                                |  |  |                   |  |                                   |  |
|   |  |  |  |  |  |  |  |  |  |  |  | DEC. INCHES                 |  |  |  |  | CHK ST 01/28/13   |                                |  |  |                   |  |                                   |  |
|   |  |  |  |  |  |  |  |  |  |  |  | .X ±.1                      |  |  |  |  | APPD              |                                |  |  |                   |  |                                   |  |
|   |  |  |  |  |  |  |  |  | C ADDED FLAT NOTES ON ODE  |  |  | MVG 11/27/2017              |  |  | ST .XX ±.03  |  |                   | TITLE OUTLINE – C' FACE        |  |  |                   |  |                                   |  |
|   |  |  |  |  |  |  |  |  | B UPDATED PER ECR-0113452  |  |  | MVG 11/07/17                |  |  | SR .XXX ±.005  |  |                   | 210TCZ FR. – TEFC – 8.50 TENON |  |  |                   |  |                                   |  |
| 725 213TCZ 25.30 18.06 7.00 – 5.50 2.75 4       |  |  |  |  |  |  |  |  | A ADDED GROMMEL PER ECO-0067365  |  |  | UD 12/11/14                 |  |  | ST .XXX ±.0005   |  |                   | MAT'L                          |  |  |                   |  |                                   |  |
| 875 213/15TCZ 26.80 19.56 8.50 5.00 7.00 3.50 8 |  |  |  |  |  |  |  |  | NO. REVISION   |  |  | BY & DATE                   |  |  | CHK ANG ±7'30"   |  |                   | FINISH                         |  |  |                   |  |                                   |  |
|   |  |  |  |  |  |  |  |  | THIS DRAWING IN DESIGN AND DETAIL IS OUR PROPERTY AND MUST NOT BE USED EXCEPT IN CONNECTION WITH OUR WORK. ALL RIGHTS OF DESIGN AND INVENTION ARE RESERVED. THIS IS AN ELECTRONICALLY GENERATED DOCUMENT – DO NOT SCALE THIS PRINT |  |  |                             |  |  |  |  |                   | RFP                            |  |  | CAD FILE 037828LE |  | SIZE DRAWING NO. PAGE 1 OF 1 REV. |  |
| DASH FRAME C AG B 2F 2FF BS FOOT HOLE QTY.      |  |  |  |  |  |  |  |  |  |  |  |                             |  |  |  |  |                   | DIST LB                        |  |  | B 037828LE C      |  |                                   |  |

THREE PHASE  
DUAL VOLTAGE MOTOR

HIGH VOLTAGE



LOW VOLTAGE




T1 (U1)  
T4 (U2)  
T9 (W3)  
T7 (U3)  
T8 (V3)  
T6 (W2)  
T5 (V2)  
T2 (V1)  
T3 (W1)

VIEW OF TERMINAL END

REF.  
WINDING DIAGRAM

T8Y, T2Y, T2BL, T4BX, T2EC, T2G  
T6BZ, T2B, T6BL, T4AV, T6B, T4B

|   |   |                |     | TOLERANCES<br>UNLESS SPECIFIED |        |  | ELECTRIC MOTORS<br>GEARMOTORS<br>AND DRIVES | DRAWN HLB 04-29-2002 |             |            |      |
|---|---|----------------|-----|--------------------------------|--------|---|---|----------------------|-------------|------------|------|
|   |   |                |     | DEC.                           | INCHES |   |   | CHK                  | ML          | 05-03-2002 |      |
|   |   |                |     | .X                             | ±.1    |   |   | APPD                 | GK          | 05-03-2002 |      |
|   |   |                |     | .XX                            | ±.01   | TITLE CONNECTION DIAGRAM<br>3ø - DUAL VOLTAGE MOTOR                                   |   | SCALE 1=1            |             |            |      |
| 2   | ADDED IEC NOTATIONS... (U1), (V1) ETC. (MU105786) | REP 01-11-2012 | DR  | .XXX                           | ±.005  |   |   | REF                  |             |            |      |
| 1   | NEW DRAWING                                       | HLB 05-03-2002 | ML  | .XXXX                          | ±.0005 | MAT'L.  |   | FMF                  |             |            |      |
| NO.   | REVISION  | BY & DATE      | CHK | ANG                            | ±1/2'  | FINISH  |   | PREV                 |             |            |      |
| THIS DRAWING IN DESIGN AND DETAIL IS OUR PROPERTY AND MUST NOT BE USED EXCEPT IN CONNECTION WITH OUR WORK ALL RIGHTS OF DESIGN AND INVENTION ARE RESERVED<br>THIS IS AN ELECTRONICALLY GENERATED DOCUMENT - DO NOT SCALE THIS PRINT |   |                |     | RFP                            |        | CAD FILE EE7308-LE  |   | SIZE                 | DRAWING NO. | PAGE OF    | REV. |
|   |   |                |     | DIST LB-WP                     |        |   |   | A                    | EE7308-LE   |            | 2    |