

PRODUCT INFORMATION PACKET



Model No: 140821.00

Catalog No: 140821.00

White Duck™ General Purpose Motor, 10 & 10 HP, 3 Ph, 60 & 50 Hz, 230/460 & 190/380 V,
1800 & 1500 RPM, 215TC Frame, TEFC



Regal and Leeson are trademarks of Regal Rexnord Corporation or one of its affiliated companies.

©2023 Regal Rexnord Corporation, All Rights Reserved. MC017097E



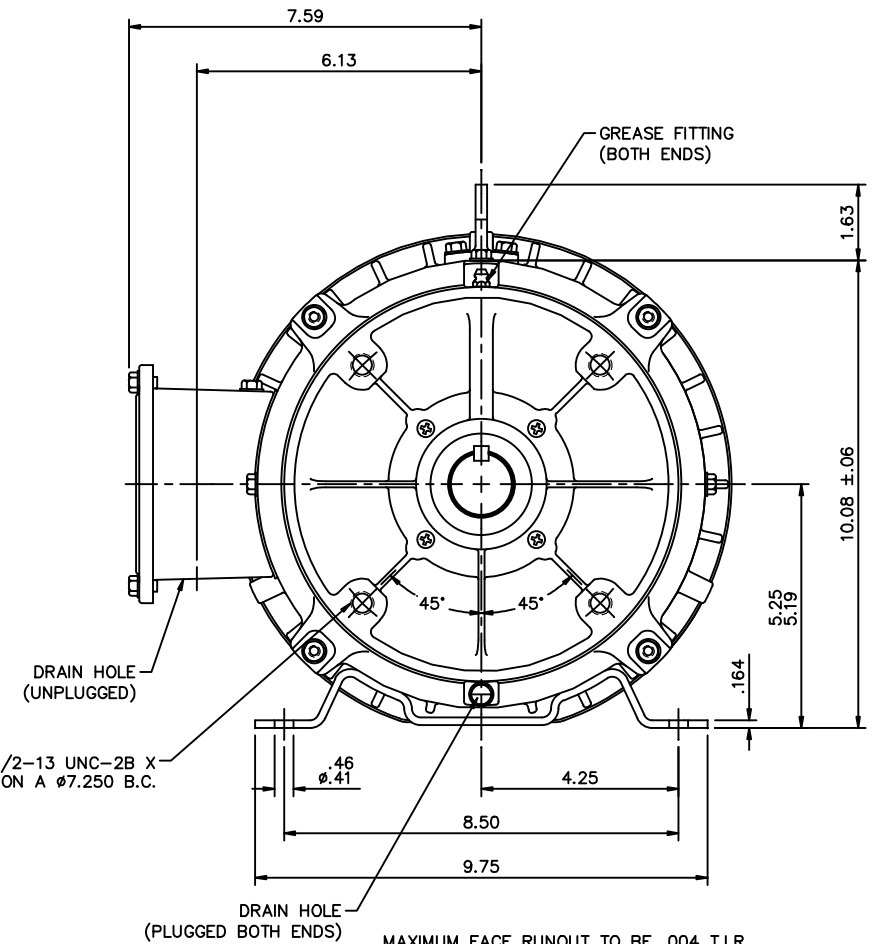
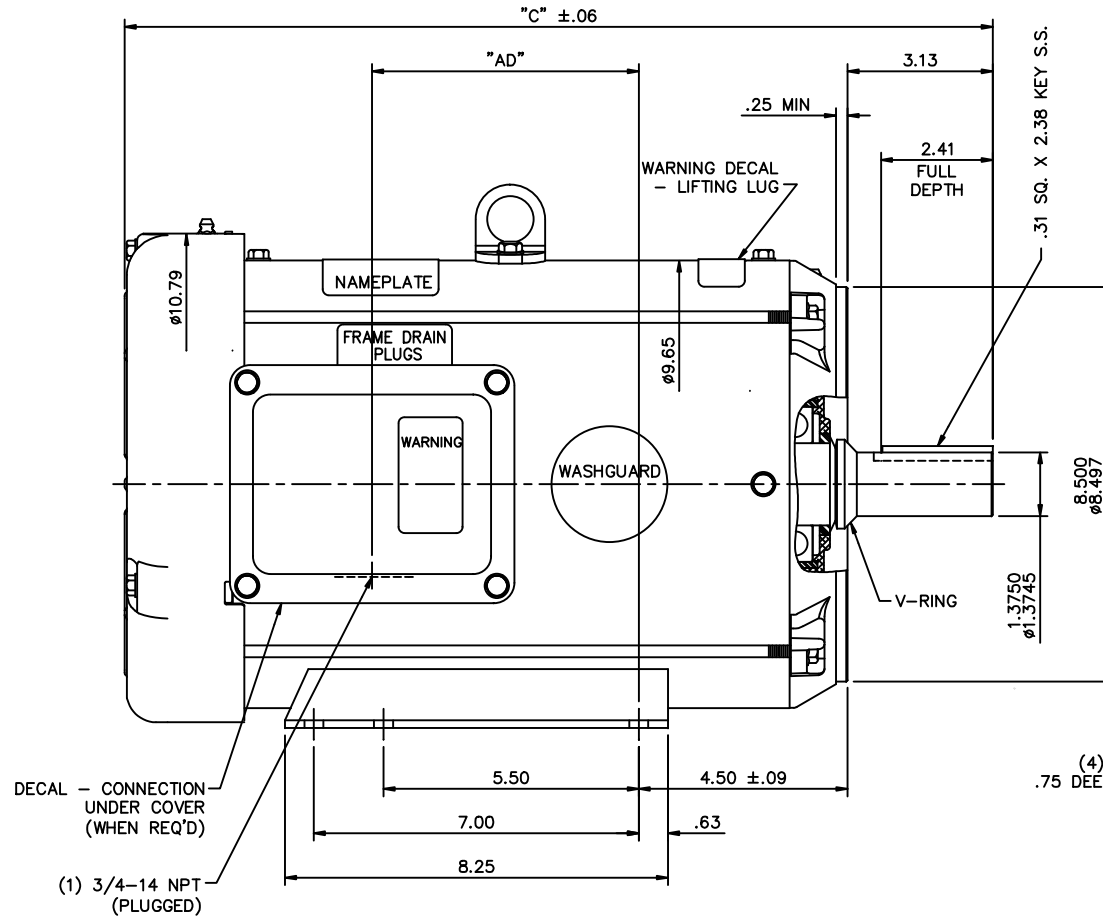


Nameplate Specifications

Phase	3	Output HP	10 & 10 Hp
Output KW	7.5 & 7.5 kW	Voltage	230/460 & 190/380 V
Speed	1765 & 1460 rpm	Service Factor	1.25 & 1.25
Frame	215TC	Enclosure	Totally Enclosed Fan Cooled
Thermal Protection	No Protection	Efficiency	91.7 & 91.7 %
Ambient Temperature	40 °C	Frequency	60 & 50 Hz
Current	26.8/13.4 & 31.2/15.6 A	Power Factor	77
Duty	Continuous	Insulation Class	F
Design Code	B	KVA Code	H
Drive End Bearing Size	6209	Opp Drive End Bearing Size	6206
UL	Recognized	CSA	Y
CE	Y	IP Code	55
Number of Speeds	1		

Technical Specifications

Electrical Type	Squirrel Cage Induction Run	Starting Method	Across The Line
Poles	4	Rotation	Reversible
Resistance Main	.755 Ohms	Mounting	Rigid Base
Motor Orientation	Horizontal	Drive End Bearing	Ball
Opp Drive End Bearing	Ball	Frame Material	Rolled Steel
Shaft Type	T	Overall Length	19.71 in
Frame Length	13.00 in	Shaft Diameter	1.375 in
Shaft Extension	3.38 in	Assembly/Box Mounting	F1 ONLY
Outline Drawing	037608-1300	Connection Drawing	005010.10



MAXIMUM FACE RUNOUT TO BE .004 T.I.R.
 MAXIMUM PILOT ECCENTRICITY TO BE .004 T.I.R.
 PERMISSIBLE SHAFT RUNOUT TO BE .002 T.I.R.
 ALIGN BASE TO C-FACE MOUNTING HOLES WITHIN $\pm 1/16"$

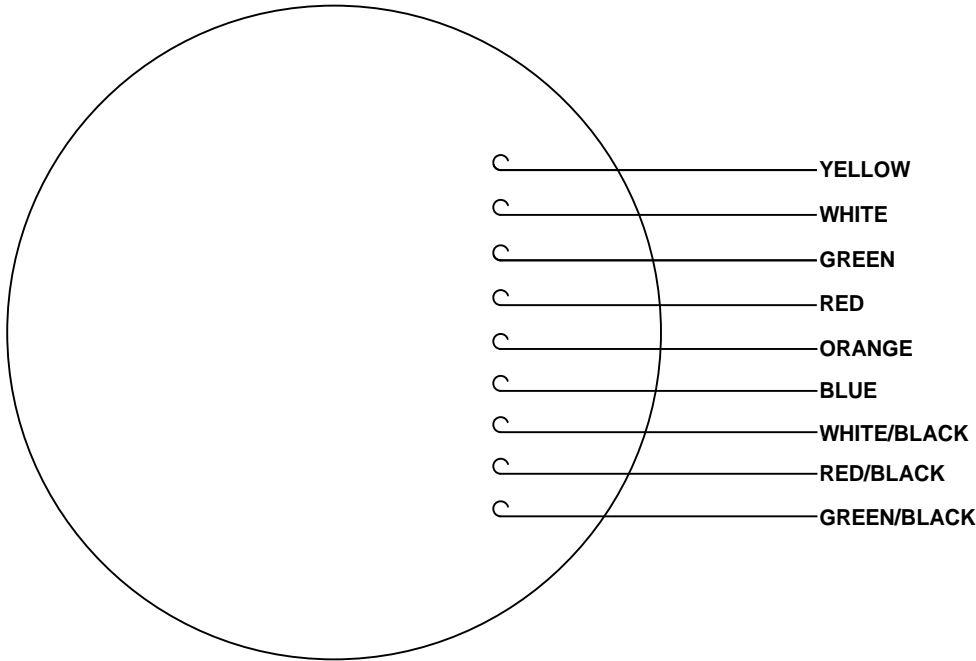
SPECIAL FEATURES:

BUNA-N GASKETS THROUGHOUT
 SHAFT SEALS - BOTH ENDS OF MOTOR
 V-RING AT SHAFT END OF MOTOR
 STAINLESS STEEL SHAFT, NAMEPLATE & HARDWARE

DASH NO.	"C"	"AD"
1100	17.71	4.75
1150	18.21	5.25
1200	18.71	5.75
1250	19.21	6.25
1300	19.71	6.75
1350	20.21	7.25

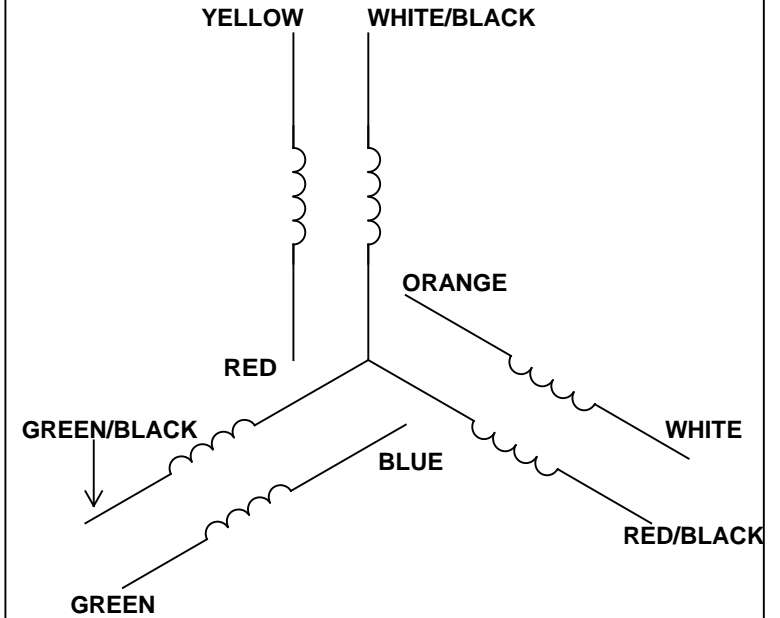
		TOLERANCES UNLESS SPECIFIED							
		DEC.	INCHES						
02	UPDATED PER ISAAC 10-0580	LST	5/11/10	.X	$\pm .1$	<div style="display: flex; align-items: center;"> <div style="border: 1px solid black; padding: 2px; margin-right: 5px;">LEESON</div> <div> ELECTRIC MOTORS GEARMOTORS AND DRIVES </div> </div>		DRAWN	RDW 2/19/03
01	ADDED: WARNING DECAL - LIFTING LUG & WARNING DECAL - WITH/OUT PROTECTOR; REMOVED: DECAL - WIRING INSTRUCTION	KVN	4/6/2010	.XX	$\pm .03$			CHK	
	NAMEPLATE - was- TV SCREEN STYLE (080884.01)			.XXX	$\pm .005$			APPD	SW 2/19/03
				.XXX	$\pm .0005$			SCALE	3=8
NO.		REVISION		BY & DATE		CHK	ANG	FINISH	PREV
						RFP	2/19/03	CAD FILE	037608
						DIST		SIZE	B
								DRAWING NO.	037608
								REV.	02

VIEW FROM OUTSIDE OF MOTOR AT SWITCH END.


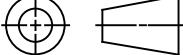


RBC PROPRIETARY AND CONFIDENTIAL INFORMATION
This document is the property of REGAL BELOIT CORPORATION ("RBC") including its subsidiaries and divisions and contains proprietary information of RBC. This document is loaned on the express condition that neither it nor the information contained therein shall be disclosed to others without the express written consent of RBC, and that the information shall be used by the recipient only as approved expressly by RBC. This document shall be returned to RBC upon its request. This document may be subject to certain restrictions under U.S. export control laws and regulations.

LINE LEADS



VOLTAGE	L1	L2	L3	JOIN & INSULATE
HIGH	YELLOW	WHITE	GREEN	(RD, WH/BL) (OR, RD/BL) (BU, GR/BL)
LOW	YELLOW, WH/BL	WHITE, RD/BL	GREEN, GR/BL	RED, ORANGE, BLUE

				TOLERANCES UNLESS SPECIFIED			ELECTRIC MOTORS GEARMOTORS AND DRIVES		DRAWN TGH 04/07/94	
				DEC	INCHES				CHK	KH 04/11/94
				.X	±.1				APPR	PG 04/11/94
				.XX	±.01				SCALE	1:1
--	REDRAWN IN SOLIDWORKS	VJB 02/08/11		.XXX	±.005	TITLE EXTERNAL WIRING DIAGRAM 3 PHASE W/COLOR LEAD			REF TX4G	
02	UPDATED TO CURRENT STANDARDS	DBT 07/15/97		.XXXX	±.0005	MAT'L			FMF 113793	
NO	REVISION	BY & DATE	CHK	ANG	±1/2°	FINISH HUB CITY			PAGE OF	
<div>THIRD ANGLE PROJECTION</div> 			RFP		PREV		SIZE	DRAWING NO		REV
			NETWORK FILE NAME 00501010				A	005010-10		--



CERTIFICATION DATA SHEET

**1051 CHEYENNE AVE.
GRAFTON, WI 53024
PH. 262-377-8810**

CATALOG #: 140821.00

CONN. DIAGRAM: 005010.10

OUTLINE: 037608-1300

MOUNTING: F1 ONLY

WINDING #: T9497 FR 3 A

TYPICAL MOTOR PERFORMANCE DATA

HP	kW	SYNC. RPM	F.L. RPM	FRAME	ENCLOSURE	KVA CODE	DESIGN
10&10	7.50&7.50	1800	1765&1460	215TC	TEFC	H	B

PH	Hz	VOLTS	AMPS	START TYPE	DUTY	INSL	S.F.	AMB°C
3	60/50	230/460&190/380	26.8/13.4&31.2/15.6	ACROSS THE LINE	CONTINUOUS	F4	1.25/1.25	40

FULL LOAD EFF:	91.7&91.7	3/4 LOAD EFF:	91.7	1/2 LOAD EFF:	90.6	GTD. EFF		ELEC. TYPE
FULL LOAD PF:	77&79	3/4 LOAD PF:	71.7	1/2 LOAD PF:	60.1	0		SQ CAGE IND RUN

F.L. TORQUE	LOCKED ROTOR AMPS	L.R. TORQUE	B.D. TORQUE	F.L. RISE°C
29.75 LB-FT	158 / 79	55.2 LB-FT 186 %	90 LB-FT 303 %	0

SOUND PRESSURE @ 3 FT.	SOUND POWER	ROTOR WK^2	MAX. WK^2	SAFE STALL TIME	STARTS / HOUR	APPROX. MOTOR WGT
0 dBA	10 dBA	1.16 LB-FT^2	1.2 LB-FT^2	0 SEC.	0	0 LBS.

*** SUPPLEMENTAL INFORMATION ***

DE BRACKET TYPE	ODE BRACKET TYPE	MOUNT TYPE	ORIENTATION	SEVERE DUTY	HAZARDOUS LOCATION	DRIP COVER	SCREENS	PAINT
C-FACE	STANDARD	RIGID	HORIZONTAL	FALSE	NONE	FALSE	NONE	WHITE - LEESON (EPOXY)

BEARINGS		GREASE	SHAFT TYPE	SPECIAL DE	SPECIAL ODE	SHAFT MATERIAL	FRAME MATERIAL
DE	ODE						
BALL	BALL	POLYREX EM	T	NONE	NONE	303 STAINLESS (C-501)	ROLLED STEEL
6209	6206						

THERMO-PROTECTORS				THERMISTORS	CONTROL	SPACE HEATERS
THERMOSTATS	PROTECTORS	WDG RTDs	BRG RTDs			
NONE	NOT	NONE	NONE	NONE	FALSE	NONE VOLTS

*

N

O

T

E

S

INVERTER TORQUE: NONE
INV. HP SPEED RANGE: NONE

ENCODER: NONE
NONE NONE
NONE NONE PPR

BRAKE: NONE NONE
NONE P/N NONE
NONE NONE
NONE FT-LB NONE V NONE Hz

Data Sheet

Date: 1/19/2018

140821.00



Data @ 460 V

Motor Load Data

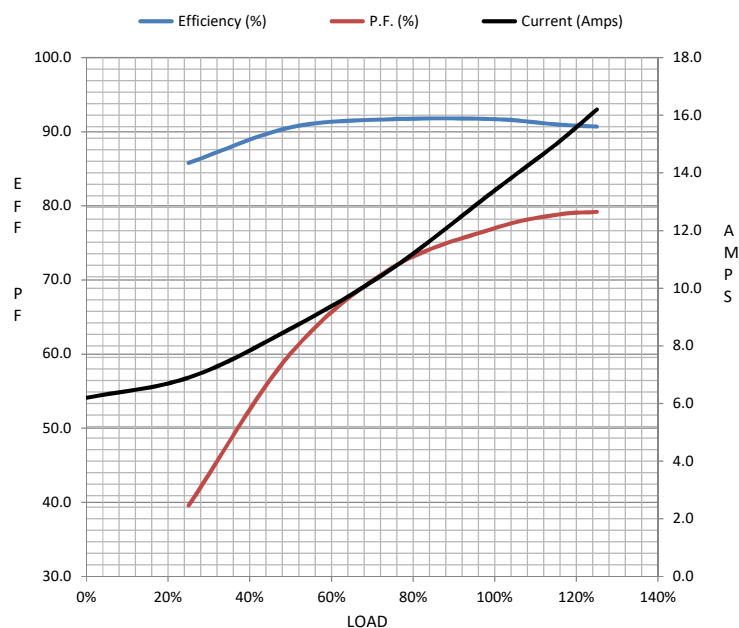
Load	0%	25%	50%	75%	100%	115%	125%	LR	
Current (Amps)	6.2	6.9	8.6	10.7	13.4	15.0	16.2	79.0	
Torque (ft-lb)	0.00	7.4	17.4	22.2	29.8	34.2	37.4	55.2	
RPM	1800	1793	1784	1774	1765	1758	1754	0	
Efficiency (%)		85.8	90.6	91.7	91.7	91.0	90.7		
P.F. (%)	6.1	39.6	60.1	71.7	77.0	78.8	79.2	0.0	

Motor Speed Data

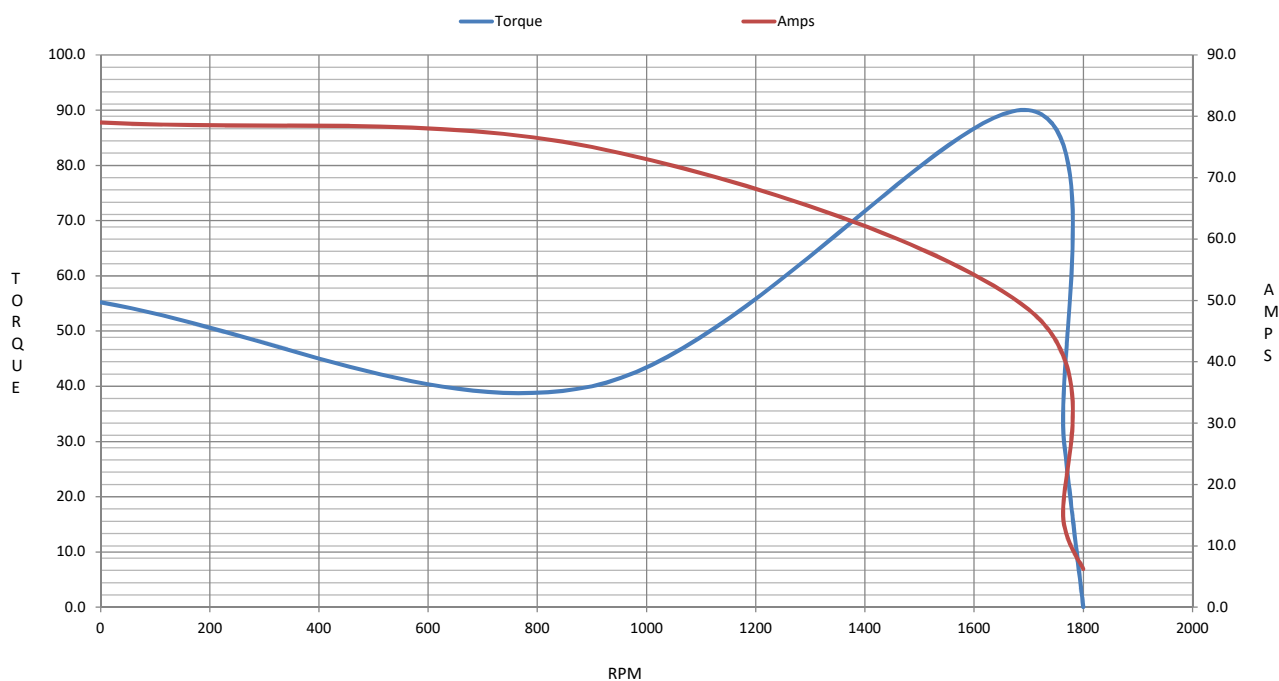
	LR	Pull-Up	BD	Rated	Idle
Speed (RPM)	0	900	1700	1765	1800
Current (Amps)	79.0	75.0	48.5	13.4	6.2
Torque (ft-lb)	55.2	40.0	90.0	29.8	0.00

Information Block

HP	10.0			
Sync. RPM	1800			
Frame	210			
Enclosure	TEFC			
Construction	TFW			
Voltage	230/460#190/380	V		
Frequency	60	Hz		
Design	B			
LR Code letter	H			
Service Factor	1.15			
Temp Rise @ FL	55	° C		
Duty	CONT			
Ambient	40	° C		
Elevation	1,000	feet		
Rotor/Shaft wk²	1.16	Lb-Ft²		
Ref Wdg	T9497 FR			
Sound Pressure @ 1M	62	dBA		
VFD Rating	NONE			
Outline Dwg	037608-1300			
Conn. Diag	005010.10			
Additional Specifications:				
0				
0				
EQUIV CKT (OHMS / PHASE)				
R1	R2	X1	X2	Xm
0.0000	0.0000	0.0000	0.0000	0.0000



Speed - Torque Curve



EC Declaration of Conformity

The undersigned representing
the manufacturer:

Regal Beloit America
100 East Randolph St.
Wausau, WI 54401

and the authorized representative
established within the Community:

Marathon Electric UK
6F Thistleton Road Ind. Estate
Market Overton
Oakham, Rutland LE15 7PP UK

are committed to providing customers with products that comply with applicable regulations and international protocols to which they are subject, including the requirements of the European Parliament Directive on the Harmonization of the laws relating to electrical equipment designed for use within certain voltage limits (2014/35/EU).

Regal Beloit America declares that the following product(s), to which this declaration relates, are in conformity with the relevant sections of the EC standards listed below.

This statement supersedes any statements previously issued pertaining to the product(s) listed below and is subject to change without notice.

Model No : 140821.00

(Model No. may contain prefix and/or suffix characters)

Catalog No : 140821.00

Rework No : N/A

Directives :

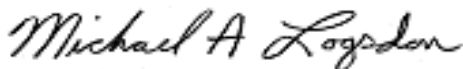
Low Voltage Directive 2014/35/EU

Harmonized Standards Used :

EN 60034-1: 2010 (IEC 60034-1: 2010)

EN 60034-5: 2001/A1:2007 (IEC 60034-5: 2000/A1:2006)

Authorized Representative:



Michael A. Logsdon
Vice President, Technology

Authorized Representative in the Community:



Julian Clark
Marketing Engineer

Created on 09/01/2022

CE 22