

PRODUCT INFORMATION PACKET



Model No: 140792.00
Catalog No: 140792.00
10.7.46.3600.215.TEFC./V.3.60..NOT.40C..ROUND..2DAM8
Miscellaneous

Regal and Leeson are trademarks of Regal Rexnord Corporation or one of its affiliated companies.
©2021 Regal Rexnord Corporation, All Rights Reserved. MC017097E





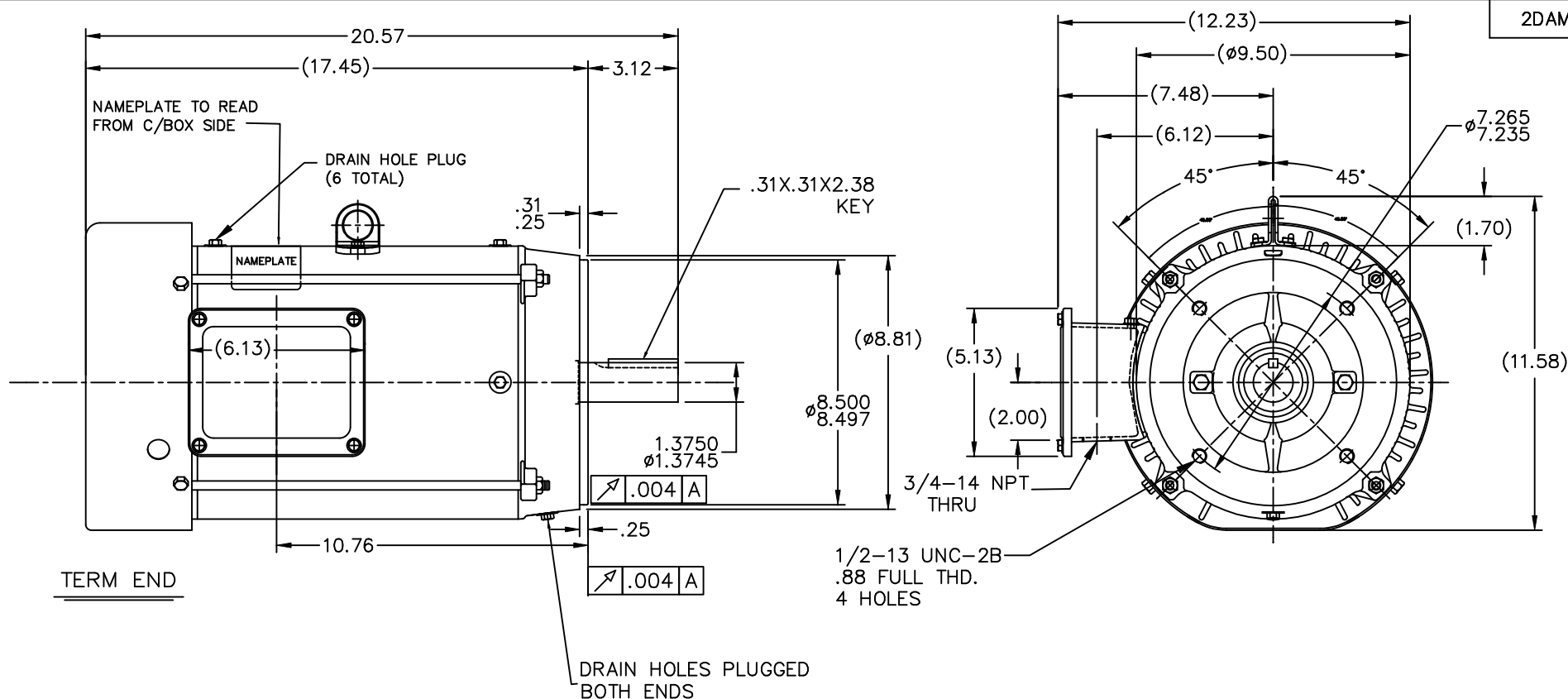
Nameplate Specifications

Output HP	10 Hp	Output KW	7.5 kW
Frequency	60 Hz	Voltage	230/460 V
Current	24.0/12.0 A	Speed	3525 rpm
Service Factor	1.15	Phase	3
Efficiency	89.5 %	Power Factor	87
Duty	Continuous	Insulation Class	F
Design Code	B	KVA Code	G
Frame	215TC	Enclosure	Totally Enclosed Fan Cooled
Thermal Protection	No	Ambient Temperature	40 °C
Drive End Bearing Size	309	Opp Drive End Bearing Size	206
UL	Recognized	CSA	Y
CE	N	IP Code	55
Number of Speeds	1		

Technical Specifications

Electrical Type	Squirrel Cage Induction Run	Starting Method	Across The Line
Poles	2	Rotation	Reversible
Resistance Main	.98 Ohms	Mounting	Round
Motor Orientation	Horizontal	Drive End Bearing	Ball
Opp Drive End Bearing	Ball	Frame Material	Rolled Steel
Shaft Type	T	Assembly/Box Mounting	F1 ONLY
Outline Drawing	2DAM8OD	Connection Drawing	2DAM8WD

This is an uncontrolled document once printed or downloaded and is subject to change without notice. Date Created:10/26/2021



SPECIAL FEATURES:

- 1) SHAFT SEALS & V-RING
- 2) PLUGGED DRAIN HOLES IN BOTH ENDBELLS, FRAME & CONDUIT BOX
- 3) GASKETS THROUGHOUT
- 4) STAINLESS STEEL SHAFT, HARDWARE & NAMEPLATE

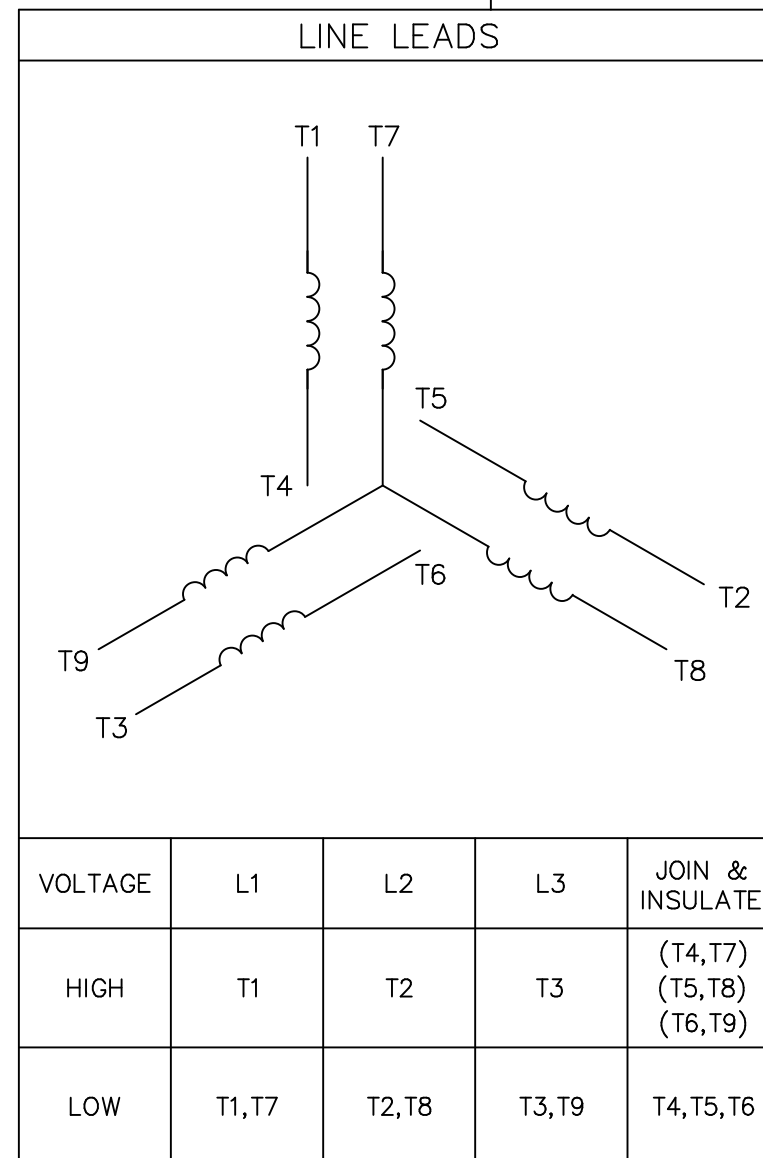
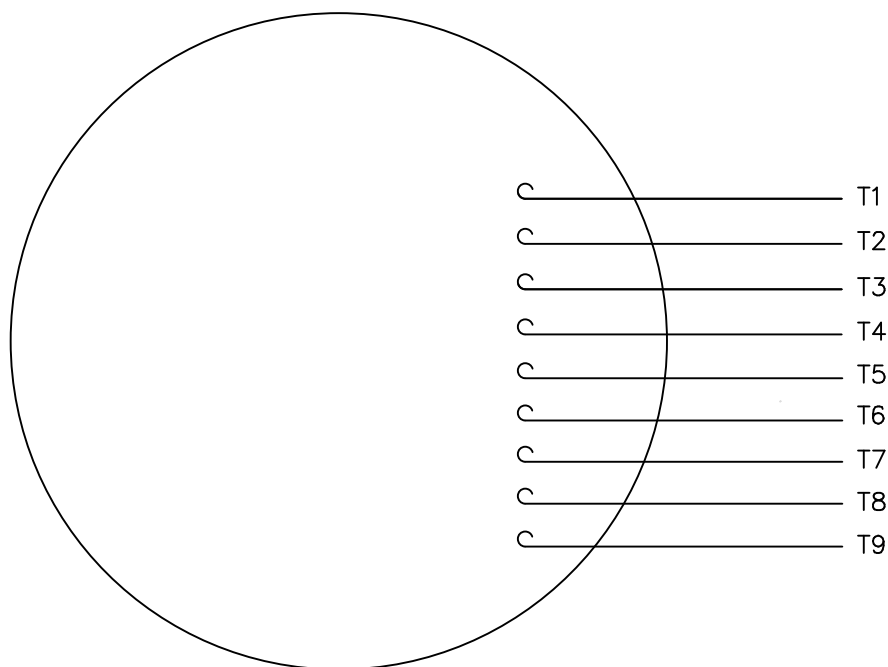
MAXIMUM FACE RUNOUT TO BE .004 T.I.R.
MAXIMUM PILOT ECCENTRICITY TO BE .004 T.I.R.
PERMISSIBLE SHAFT RUNOUT TO BE .002 T.I.R.
ALIGN BASE TO C-FACE MOUNTING HOLES WITHIN $\pm 1/16"$

			TOLERANCES UNLESS SPECIFIED		Dayton [®] Dayton Electric Mfg. Co. 5959 West Howard St. Niles, IL 60714 USA	DRAWN SVL 11/10/2007	
			DEC.	INCHES		CHK SVL 11/10/2007	
			.X	±.1		APPD SVL 11/10/2007	
			.XX	±.03	TITLE	SCALE	3=16
			.XXX	±.005	210 FR. - TEFC - C'FACE - 3 PHASE	REF	SS88927LE
01	ADDED NAME PLATE NOTE	SVL 03/27/08	.XXXX	±.0005	MAT'L	FMF	
NO.	REVISION	BY & DATE	CHK	ANG	FINISH	PREV	
THIS DRAWING IN DESIGN AND DETAIL IS OUR PROPERTY AND MUST NOT BE USED EXCEPT IN CONNECTION WITH OUR WORK ALL RIGHTS OF DESIGN AND INVENTION ARE RESERVED THIS IS AN ELECTRONICALLY GENERATED DOCUMENT - DO NOT SCALE THIS PRINT			RFP	CAD FILE	2DAM80D	SIZE	DRAWING NO.
			DIST	LB		B	2DAM80D
							01

ERROR: undefined
OFFENDING COMMAND: Pscr

STACK:

VIEW FROM OUTSIDE OF MOTOR AT SWITCH END.



VOLTAGE	L1	L2	L3	JOIN & INSULATE
HIGH	T1	T2	T3	(T4,T7) (T5,T8) (T6,T9)
LOW	T1,T7	T2,T8	T3,T9	T4,T5,T6

				TOLERANCES UNLESS SPECIFIED		<div>Dayton®</div>	Dayton Electric Mfg. Co. 5959 West Howard St. Niles, IL 60714 USA		DRAWN KVN 10/04/07	
				DEC.	INCHES				CHK	
				.X	±.1				APPD	
				.XX	±.01				SCALE 1=1	
				.XXX	±.005					
				.XXXX	±.0005	MAT'L. DECAL - 004014		FMF 140792		
NO.	REVISION	BY & DATE	CHK	ANG	±1/2"	FINISH		PREV		
THIS DRAWING IN DESIGN AND DETAIL IS OUR PROPERTY AND MUST NOT BE USED EXCEPT IN CONNECTION WITH OUR WORK ALL RIGHTS OF DESIGN AND INVENTION ARE RESERVED THIS IS AN ELECTRONICALLY GENERATED DOCUMENT - DO NOT SCALE THIS PRINT			RFP		CAD FILE 2DAM8WD		SIZE	DRAWING NO.		REV
			DIST				A	2DAM8WD		