

PRODUCT INFORMATION PACKET



Model No: 140769.00

Catalog No: 140769.00

General Purpose Motor, 10 & 7.50 HP, 3 Ph, 60 & 50 Hz, 230/460 & 190/380 V, 3600 & 3000 RPM,
215TC Frame, TEFC



Regal and Leeson are trademarks of Regal Rexnord Corporation or one of its affiliated companies.

©2023 Regal Rexnord Corporation, All Rights Reserved. MC017097E



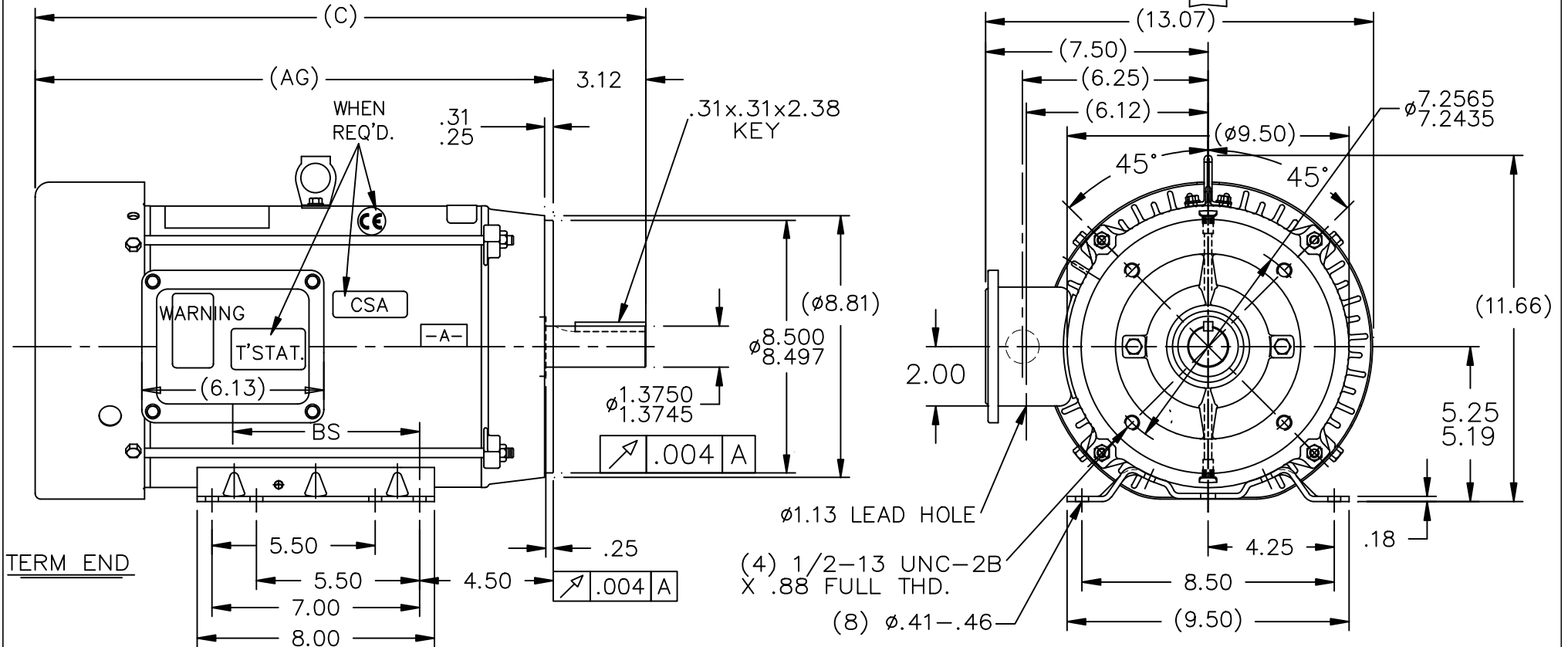


Nameplate Specifications

Phase	3	Output HP	10 & 7.5 Hp
Output KW	7.5 & 5.6 kW	Voltage	230/460 & 190/380 V
Speed	3535 & 2950 rpm	Service Factor	1.15 & 1.15
Frame	215TC	Enclosure	Totally Enclosed Fan Cooled
Thermal Protection	No Protection	Efficiency	91.7 & 92 %
Ambient Temperature	40 °C	Frequency	60 & 50 Hz
Current	23.6/11.8 & 21/10.5 A	Power Factor	87
Duty	Continuous	Insulation Class	F
Design Code	B	KVA Code	H
Drive End Bearing Size	309	Opp Drive End Bearing Size	206
UL	Recognized	CSA	Y
CE	Y	IP Code	43
Number of Speeds	1		

Technical Specifications

Electrical Type	Squirrel Cage Induction Run	Starting Method	Across The Line
Poles	2	Rotation	Reversible
Resistance Main	.8 Ohms	Mounting	Rigid Base
Motor Orientation	Horizontal	Drive End Bearing	Ball
Opp Drive End Bearing	Ball	Frame Material	Rolled Steel
Shaft Type	T	Overall Length	21.82 in
Frame Length	12.40 in	Shaft Diameter	1.375 in
Shaft Extension	3.38 in	Assembly/Box Mounting	F1 ONLY
Outline Drawing	A-SS88675LE-1240	Connection Drawing	A-EE7308T-LE




TERM END

DASH	FR.	C	AG	BS	MOUNTING
965	213T	19.07	14.85	4.80	
1115	213/15T	20.57	17.45	6.30	
1240	213/15T	21.82	18.70	7.55	F1 ONLY

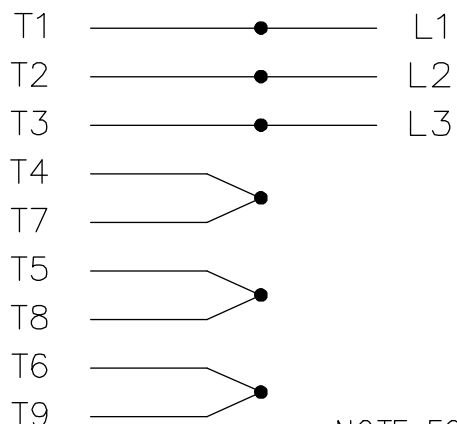
NOTES:

- NAMEPLATE TO BE READ FROM C'BOX SIDE OF MOTOR.
- BOX CAN BE MOUNTED ON OPPOSITE SIDE BY REMOVING BRACKETS AND TURNING FRAME 180° (EXCEPT AS NOTED.)

- DASH 965 TO BE READ FROM OPPOSITE SHAFT END

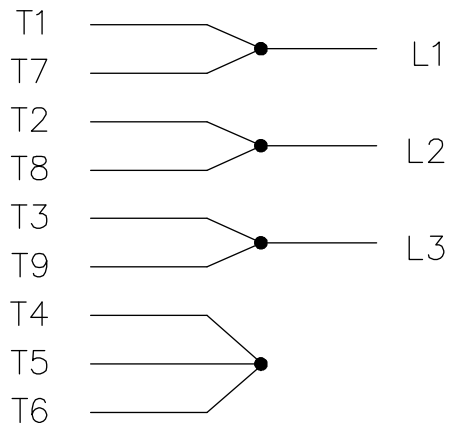
				TOLERANCES UNLESS SPECIFIED			ELECTRIC MOTORS GEARMOTORS AND DRIVES		DRAWN HLB 07-16-2002		
				DEC.	INCHES				CHK	DRS	07-18-2002
3	ADDED NOTE 3 & REMOVED GROMMET CN 31848, 31881	DRS 10-21-2002	ML	.X	±.1	TITLE OUTLINE 210 FR. – BB – TS – TEFC – R/S – C'FACE			APPD	TB	07-19-2002
2	REMOVED "BOX CAN BE MOUNTED IN 90 DEG	RJM 08-20-2002	JPL	.XX	±.03				SCALE	1=5	
	STEPS" FROM NOTES. CN29200-2517			.XXX	±.005	MAT'L.			REF		
1	NEW DRAWING	HLB 07-19-2002	TB	.XXXX	±.0005						
NO.	REVISION	BY & DATE	CHK	ANG	±1/2"	FINISH			PREV		
THIS DRAWING IN DESIGN AND DETAIL IS OUR PROPERTY AND MUST NOT BE USED EXCEPT IN CONNECTION WITH OUR WORK ALL RIGHTS OF DESIGN AND INVENTION ARE RESERVED THIS IS AN ELECTRONICALLY GENERATED DOCUMENT – DO NOT SCALE THIS PRINT			RFP		CAD FILE ss88675le			SIZE	DRAWING NO. PAGE OF		REV.
			DIST LB-LE					A	SS88675LE		3

HIGH VOLTAGE



NOTE FOR FACTORY USE ONLY:
TO SURGE TEST FOR COMMON CONNECT:
HIGH VOLT: CONNECT P1 TO T1
THEN P2 TO L1
LOW VOLT: CONNECT P1 TO T1 & T7,
THEN P2 TO L1

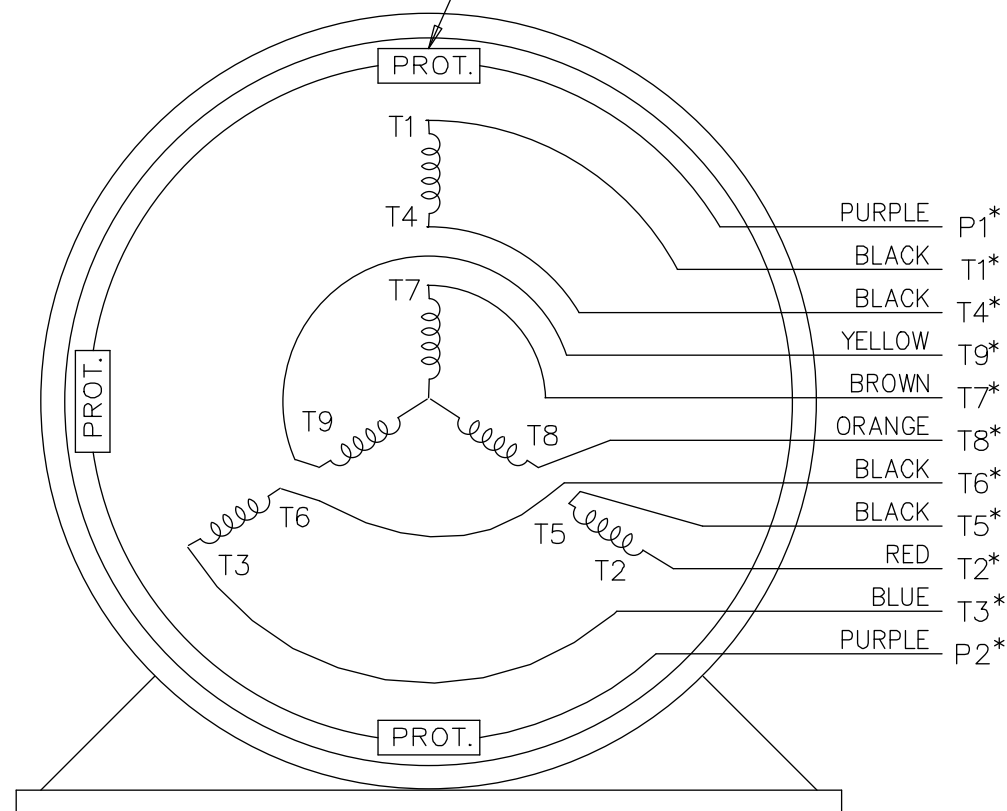
LOW VOLTAGE



THREE PHASE DUAL VOLTAGE MOTOR


EE7308T-LE

THREMO-PROTECTORS
CONNECTED IN SERIES.



VIEW OF TERMINAL END

* USE LEADS AS PER PLANT STANDARD IRRWSPECTIVE OF THEIR COLOUR.

				TOLERANCES UNLESS SPECIFIED			ELECTRIC MOTORS GEARMOTORS AND DRIVES			DRAWN TJB 05-07-2002		
05	ADDED * NOTE PER ECN # 26921	UD 01-30-2013	JD	DEC.	INCHES					CHK ML 05-08-2002		
04	ADDED COLORS TO "T & P" LEADS CN 40494	MSG 08-08-2006	ML	.X	±.1					APPD TB 05-08-2002		
03	RE-ISSUE	NJS 04-21-2004	JET	.XX	±.02	TITLE CONNECTION DIAGRAM 3 PHASE – DUAL VOLTAGE MOTOR				SCALE 1=1		
02	REDRAWN	TAT 04-20-2004	ML	.XXX	±.005					REF		
01	NEW DRAWING CN 34708	TJB 05-08-2002	ML	.XXXX	±.0005	MAT'L.				FMF		
NO.	REVISION	BY & DATE	CHK	ANG	±7'30"	FINISH				PREV		
THIS DRAWING IN DESIGN AND DETAIL IS OUR PROPERTY AND MUST NOT BE USED EXCEPT IN CONNECTION WITH OUR WORK ALL RIGHTS OF DESIGN AND INVENTION ARE RESERVED THIS IS AN ELECTRONICALLY GENERATED DOCUMENT – DO NOT SCALE THIS PRINT			RFP			CAD FILE EE7308T_LE			SIZE	DRAWING NO.	PAGE OF	REV.
			DIST LB-WP-LE						A	EE7308T-LE		05



P.O. BOX 8003
WAUSAU, WI 54401-8003
PH. 715-675-3311

DATA VOLTS: 460

CERTIFICATION DATA SHEET

CONN. DIAGRAM: A-EE7308T-LE
OUTLINE: A-SS88675LE-1240
WINDING: K215295

CAT #: 140769.00

NONE 6

TYPICAL MOTOR PERFORMANCE DATA

HP	KW	SYNC RPM	FL RPM	FRAME	ENCLOSURE	TYPE	KVA CODE	DESIGN
10	7.5	3600	3535	215TC	TEFC	TFN	H	B

PH	HZ	VOLTS	AMPS	START TYPE	DUTY	INSL	S.F.	AMB	ELEV.
3	60/50	230/460#190/380	23.6/11.8&21/10.5	ACROSS THE LINE	CONT	F	1.15	40	3300

F.L. EFF	91.7	3/4 LD EFF	92.4	1/2 LD EFF	91.7	GTD EFF	91.0	ELECT. TYPE	SQ CAGE IND RUN
F.L. PF	87.0	3/4 LD PF	86.0	1/2 LD PF	78.5				

F.L. TORQUE	LR AMPS @ 460 V	L.R. TORQUE	B.D. TORQUE	F.L. RISE (°C)
14.9 LB-FT	80.0	30.0 LB-FT 201%	46.0 LB-FT 309%	50

PRESSURE @ 3	POWER	ROTOR WK²	MAX. LOAD WK²	SAFE STALL TIME	STARTS/HOUR	MOTOR WGT
72 dBA	81 dBA	0.68 LB-FT²	18 LB-FT²	15 SEC.	2	230 LB.

*** SUPPLEMENTAL INFORMATION ***

DE BRACKET TYPE	ODE BRACKET TYPE	MOUNT TYPE	MOTOR ORIENTATION	SEVERE DUTY	HAZARDOUS LOCATION	DRIP COVER	SCREENS	PAINT
C-FACE	STANDARD	RIGID	HORIZONTAL	NO	NONE	NO	NONE	IN - LEESON WATTS

BEARINGS		GREASE	SHAFT TYPE	SPECIAL DE	SPECIAL ODE	SHAFT MATERIAL	FRAME MATERIAL
DE	ODE	POLYREX EM	T	NONE	NONE	AISI 1045 (C-240)	ROLLED STEEL
BALL	BALL						
309	206						

THERMOSTATS	PROTECTORS	WDG RTD's	BRG RTD's	THERMISTORS	CONTROL	SPACE HEATERS
DOUBLE TSTATS (N)	NOT	NONE	NONE	NONE	FALSE	NA

R1 (ohms/ph)	R2 (ohms/ph)	X1 (ohms/ph)	X2 (ohms/ph)	Xm (ohms/ph)	VIBRATION (in/sec)	FLOAT
0.523	0.398	1.806	2.062	72.136	0.150	ODE

* N O T E S *			INVERTER TORQUE: NONE INV. HP SPEED RANGE: NONE ENCODER: NONE NONE NONE NONE PPR

DATE: 2/22/2018	BRAKE: NONE NONE NONE	
	FT-LB: NA	VOLTAGE: NONE HZ:
	UL: Y-(LEESON UL REC)	

Data Sheet

Date: 1/24/2018

140769.00



Data @ 460 V

Motor Load Data

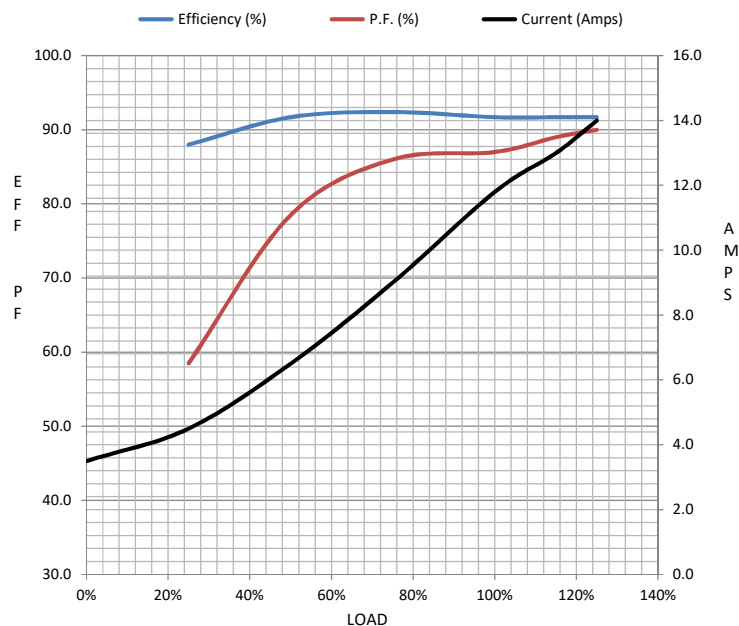
Load	0%	25%	50%	75%	100%	115%	125%	LR	
Current (Amps)	3.5	4.5	6.5	9.0	11.8	13.0	14.0	80.0	
Torque (ft-lb)	0.00	3.5	7.5	11.0	14.9	17.0	18.5	30.0	
RPM	3600	3585	3570	3555	3535	3,530	3525	0	
Efficiency (%)		88.0	91.7	92.4	91.7	91.7	91.7		
P.F. (%)	8.5	58.5	78.5	86.0	87.0	89.0	90.0	40.0	

Motor Speed Data

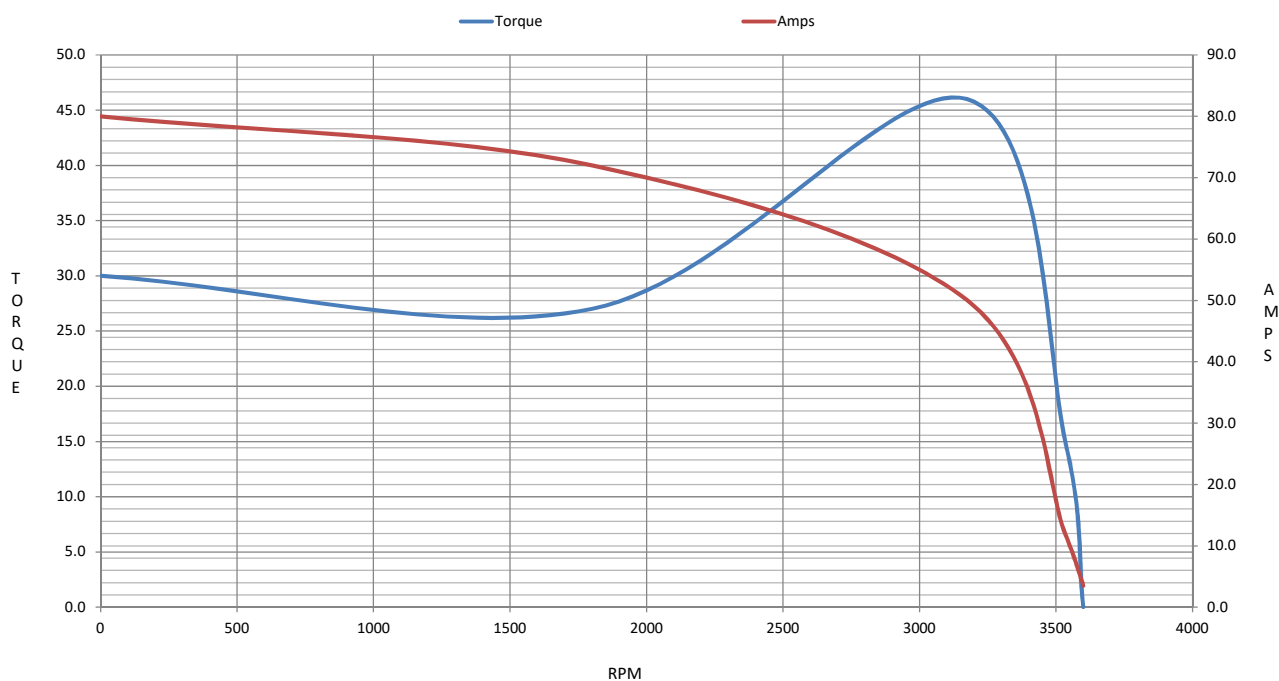
	LR	Pull-Up	BD	Rated	Idle
Speed (RPM)	0	1800	3175	3535	3600
Current (Amps)	80.0	72.0	50.0	11.8	3.5
Torque (ft-lb)	30.0	27.0	46.0	14.9	0.00

Information Block

HP	10.0			
Sync. RPM	3600			
Frame	215			
Enclosure	TEFC			
Construction	TFN			
Voltage	230/460#190/380		V	
Frequency	60		Hz	
Design	B			
LR Code letter	H			
Service Factor	1.15			
Temp Rise @ FL	50		° C	
Duty	CONT			
Ambient	40 ° C			
Elevation	1,000		feet	
Rotor/Shaft wk²	0.68		Lb-Ft²	
Ref Wdg	K215295 NONE			
Sound Pressure @ 1M	72		dBA	
VFD Rating	NONE			
Outline Dwg	A-SS88675LE-1240			
Conn. Diag	A-EE7308T-LE			
Additional Specifications:				
0				
193316.60				
EQUIV CKT (OHMS / PHASE)				
R1	R2	X1	X2	Xm
0.5230	0.3980	1.8060	2.0620	72.1360



Speed - Torque Curve



EC Declaration of Conformity

The undersigned representing
the manufacturer:

Regal Beloit America
100 East Randolph St.
Wausau, WI 54401

and the authorized representative
established within the Community:

Marathon Electric UK
6F Thistleton Road Ind. Estate
Market Overton
Oakham, Rutland LE15 7PP UK

are committed to providing customers with products that comply with applicable regulations and international protocols to which they are subject, including the requirements of the European Parliament Directive on the Harmonization of the laws relating to electrical equipment designed for use within certain voltage limits (2014/35/EU).

Regal Beloit America declares that the following product(s), to which this declaration relates, are in conformity with the relevant sections of the EC standards listed below.

This statement supersedes any statements previously issued pertaining to the product(s) listed below and is subject to change without notice.

Model No : 140769.00

(Model No. may contain prefix and/or suffix characters)

Catalog No : 140769.00

Rework No : N/A

Directives :

Low Voltage Directive 2014/35/EU

Harmonized Standards Used :

EN 60034-1: 2010 (IEC 60034-1: 2010)

EN 60034-5: 2001/A1:2007 (IEC 60034-5: 2000/A1:2006)

Authorized Representative:



Michael A. Logsdon
Vice President, Technology

Authorized Representative in the Community:



Julian Clark
Marketing Engineer

Created on 09/01/2022

CE 22