

PRODUCT INFORMATION PACKET



Model No: 140706.00
Catalog No: 140706.00
Agricultural Motor, 10 HP, 1 Ph, 60 Hz, 230 V, 1800 RPM, 215T Frame, TEFC



Regal and Leeson are trademarks of Regal Rexnord Corporation or one of its affiliated companies.
©2022 Regal Rexnord Corporation, All Rights Reserved. MC017097E





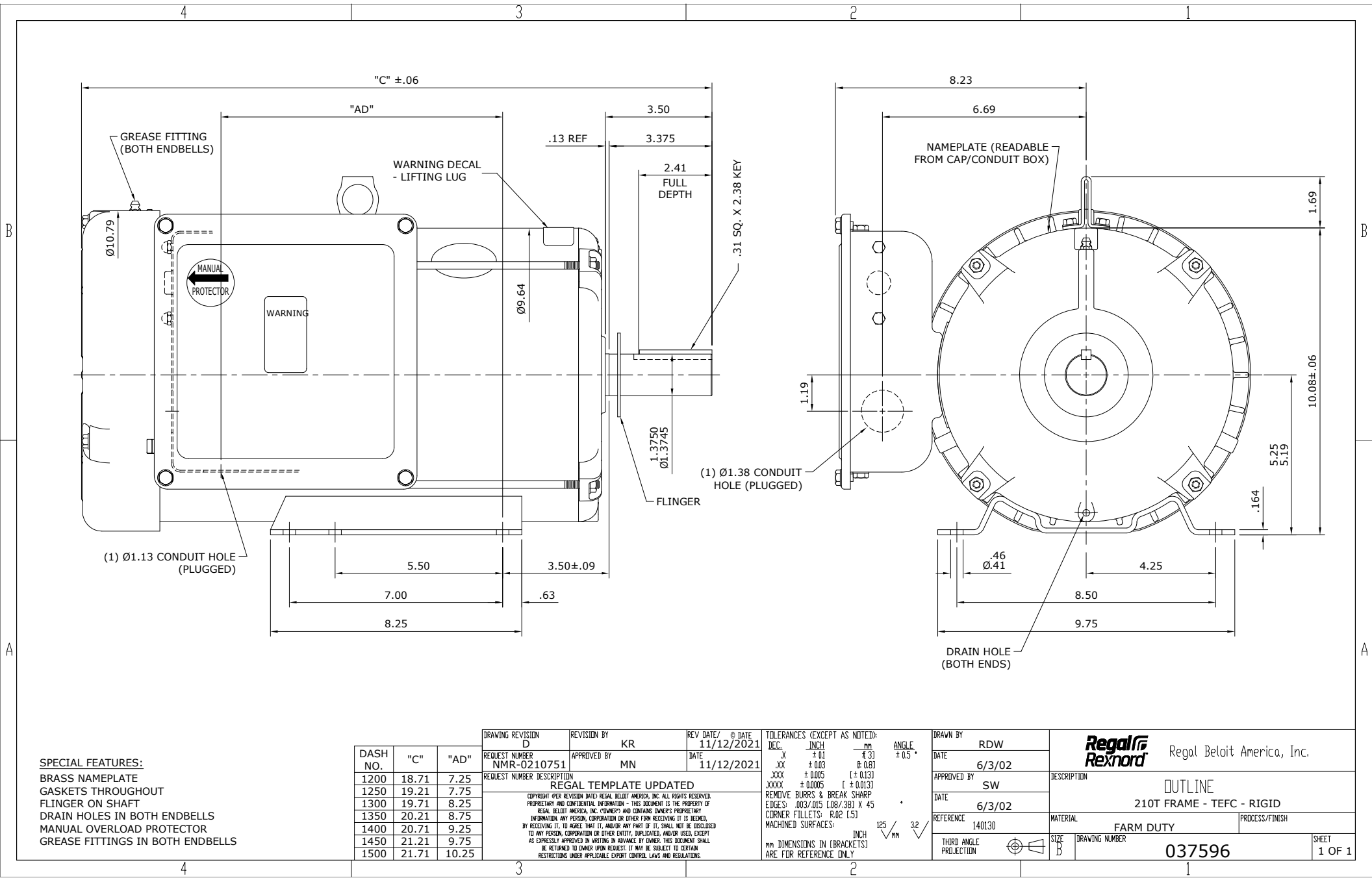
Nameplate Specifications

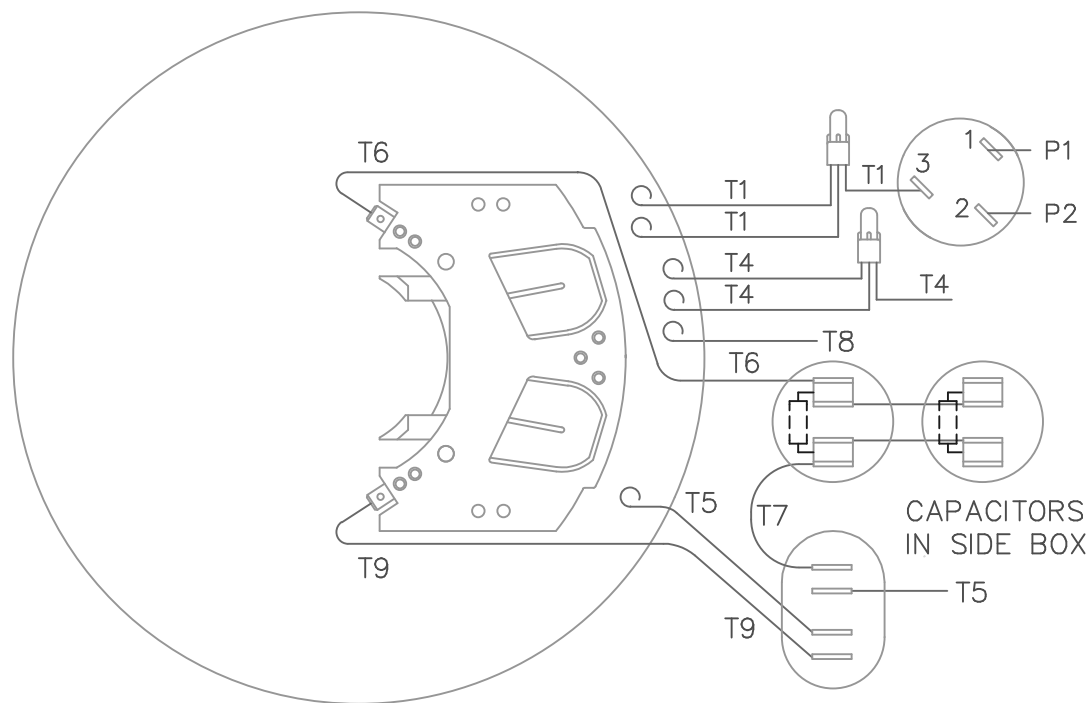
Output HP	10 Hp	Output KW	7.5 kW
Frequency	60 Hz	Voltage	230 V
Current	40.0 A	Speed	1740 rpm
Service Factor	1.15	Phase	1
Efficiency	86.5 %	Power Factor	95
Duty	Continuous	Insulation Class	F
Design Code	NO DESIGN CODE	KVA Code	G
Frame	215T	Enclosure	Totally Enclosed Fan Cooled
Thermal Protection	Manual	Ambient Temperature	40 °C
Drive End Bearing Size	6207	Opp Drive End Bearing Size	6206
UL	Recognized	CSA	Y
CE	N	IP Code	43
Number of Speeds	1		

Technical Specifications

Electrical Type	Capacitor Start Capacitor Run	Starting Method	Across The Line
Poles	4	Rotation	Selective Counterclockwise
Resistance Main	.118 Ohms	Mounting	Rigid Base
Motor Orientation	Horizontal	Drive End Bearing	Ball
Opp Drive End Bearing	Ball	Frame Material	Rolled Steel
Shaft Type	T	Overall Length	20.71 in
Frame Length	14.00 in	Shaft Diameter	1.375 in
Shaft Extension	3.38 in	Assembly/Box Mounting	F1 ONLY
Connection Drawing	005461.02	Outline Drawing	037596-1400

This is an uncontrolled document once printed or downloaded and is subject to change without notice. Date Created:11/28/2022

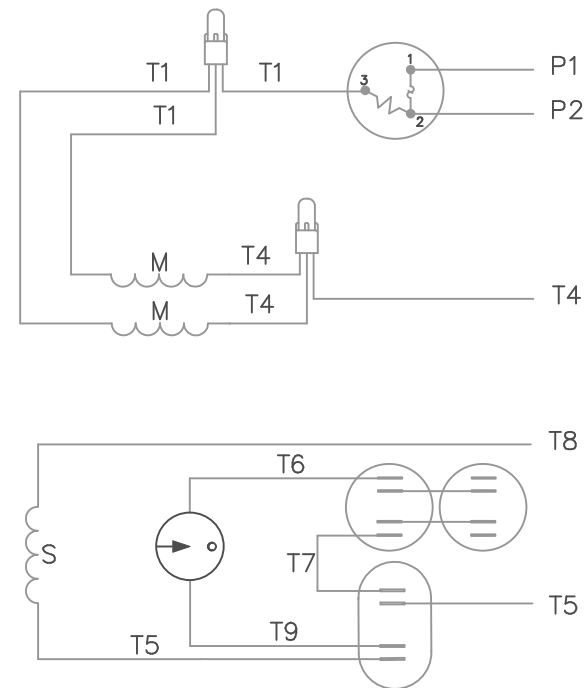





VIEW FROM OUTSIDE OF
MOTOR AT SWITCH END

CAUTION:
LEAD WIRE INSULATION TO
EXTEND MIN. OF 1/4" INTO
CONNECTOR INSULATION

LINE LEADS



ROTATION FACING LEAD END	L1	L2	JOIN & INSULATE
C.C.W.	P1	T4,T5	P2,T8
C.W.	P1	T4,T8	P2,T5

				TOLERANCES UNLESS SPECIFIED			ELECTRIC MOTORS GEARMOTORS AND DRIVES		DRAWN RDW 10/25/02	
				DEC.	INCHES				CHK	
				.X	±.1				APPD	
				.XX	±.01		TITLE		SCALE	1=2
				.XXX	±.005		EXTERNAL WIRING DIAGRAM TYPE "K" WITH PROTECTOR		REF	005461-01
				.XXX	±.0005		MAT'L.		FMF	140706
				.XXX	±.0005		DECAL 080135		PREV	
NO.	REVISION	BY & DATE	CHK	ANG	±1/2"	FINISH				
				RFP	10/25/02	CAD FILE	00546102	SIZE	DRAWING NO.	
				DIST				A	005461-02	
										REV.

THIS DRAWING IN DESIGN AND DETAIL IS OUR PROPERTY AND MUST NOT BE USED EXCEPT
IN CONNECTION WITH OUR WORK ALL RIGHTS OF DESIGN AND INVENTION ARE RESERVED
THIS IS AN ELECTRONICALLY GENERATED DOCUMENT - DO NOT SCALE THIS PRINT

9/25/2008 6:20:24 PM



CERTIFICATION DATA SHEET

1051 CHEYENNE AVE.
GRAFTON, WI 53024
PH. 262-377-8810

CONN. DIAGRAM: 005461.02

CATALOG #: 140706.00

OUTLINE: 037596-1400

MOUNTING: F1 ONLY

WINDING #: K9425 FR 2 A

TYPICAL MOTOR PERFORMANCE DATA

HP	kW	SYNCRPM	F.L. RPM	FRAME	ENCLOSURE	KVA CODE	DESIGN
10	7.50	1800	1740	215T	TEFC	G	NO DESIGN CODE

PH	Hz	VOLTS	AMPS	START TYPE	DUTY	INSL	S.F.	AMB°C
1	60	230	40	ACROSS THE LINE	CONTINUOUS	F4	1.15	40

FULL LOAD EFF:	86.5	3/4 LOAD EFF:	86.4	1/2 LOAD EFF:	83.7	GTD. EFF	ELEC. TYPE
FULL LOAD PF:	95	3/4 LOAD PF:	94.9	1/2 LOAD PF:	92.8	84	CAP START CAP RUN

F.L. TORQUE	LOCKED ROTOR AMPS	L.R. TORQUE	B.D. TORQUE	F.L. RISE°C
30 LB-FT	264	90.2 LB-FT 301 %	69.5 LB-FT 232 %	95

SOUND PRESSURE @ 3 FT.	SOUND POWER	ROTOR WK^2	MAX. WK^2	SAFE STALL TIME	STARTS / HOUR	APPROX. MOTOR WGT
0 dBA	10 dBA	1.157 LB-FT^2	1.2 LB-FT^2	0 SEC.	0	155 LBS.

*** SUPPLEMENTAL INFORMATION ***

DE BRACKET TYPE	ODE BRACKET TYPE	MOUNT TYPE	ORIENTATION	SEVERE DUTY	HAZARDOUS LOCATION	DRIP COVER	SCREENS	PAINT
STANDARD	STANDARD	RIGID	HORIZONTAL	FALSE	NONE	FALSE	NONE	RED - LEESON FARM DUTY

BEARINGS		GREASE	SHAFT TYPE	SPECIAL DE	SPECIAL ODE	SHAFT MATERIAL	FRAME MATERIAL
DE	ODE						
BALL	BALL	POLYREX EM	T	NONE	NONE	AISI 1045 (C-240)	ROLLED STEEL
6207	6206						

THERMO-PROTECTORS				THERMISTORS	CONTROL	SPACE HEATERS
THERMOSTATS	PROTECTORS	WDG RTDs	BRG RTDs			
NONE	MANUAL	NONE	NONE	NONE	FALSE	NONE VOLTS

*

N

O

T

E

S

INVERTER TORQUE: NONE
INV. HP SPEED RANGE: NONE

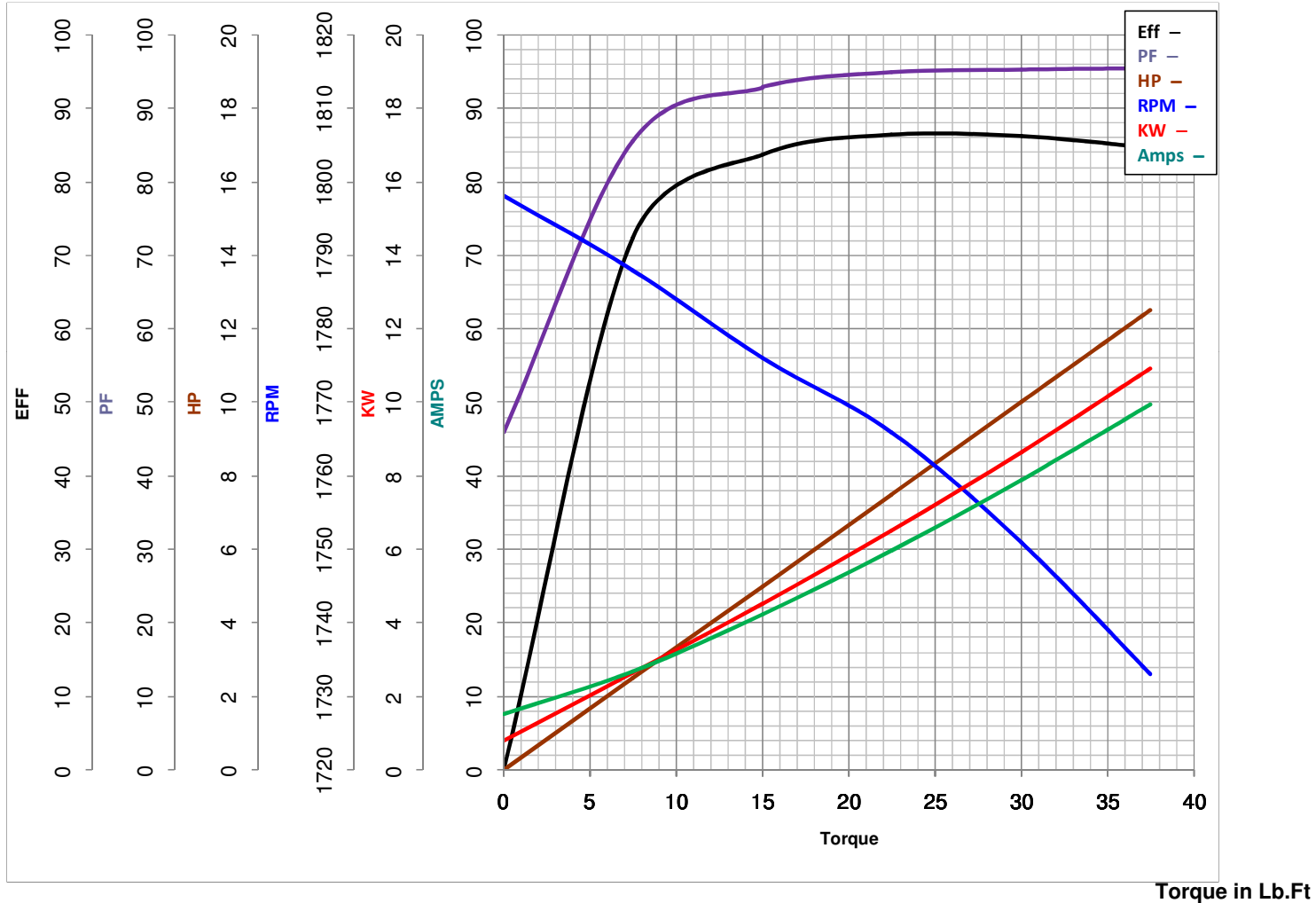
ENCODER: NONE
NONE NONE
NONE NONE PPR

BRAKE: NONE NONE
NONE P/N NONE
NONE NONE
NONE FT-LB NONE V NONE Hz



LEESON ELECTRIC CORPORATION

TYPICAL PERFORMANCE CURVE for AC MOTOR

Model No 140706.00Curve at 230
60
10Volts
HZ
HPHP 10.00VOLTS 230PHASE 1HZ 60RPM 1740Catalog No 140706.00

FL TORQUE 30 Lb.Ft
 BD TORQUE 69.5 Lb.Ft
 LR TORQUE 90.2 Lb.Ft

FL AMPS 40
 PU TORQUE 61.5 Lb.Ft
 LR AMPS 264

WINDING K9425-2

Date 4/12/2018