

PRODUCT INFORMATION PACKET



Model No: 140694.00

Catalog No: 140694.00

General Purpose Motor, 7.50 HP, 1 Ph, 60 Hz, 208-230 V, 3600 RPM, 213TC Frame, TEFC



Regal and Leeson are trademarks of Regal Rexnord Corporation or one of its affiliated companies.

©2022 Regal Rexnord Corporation, All Rights Reserved. MC017097E



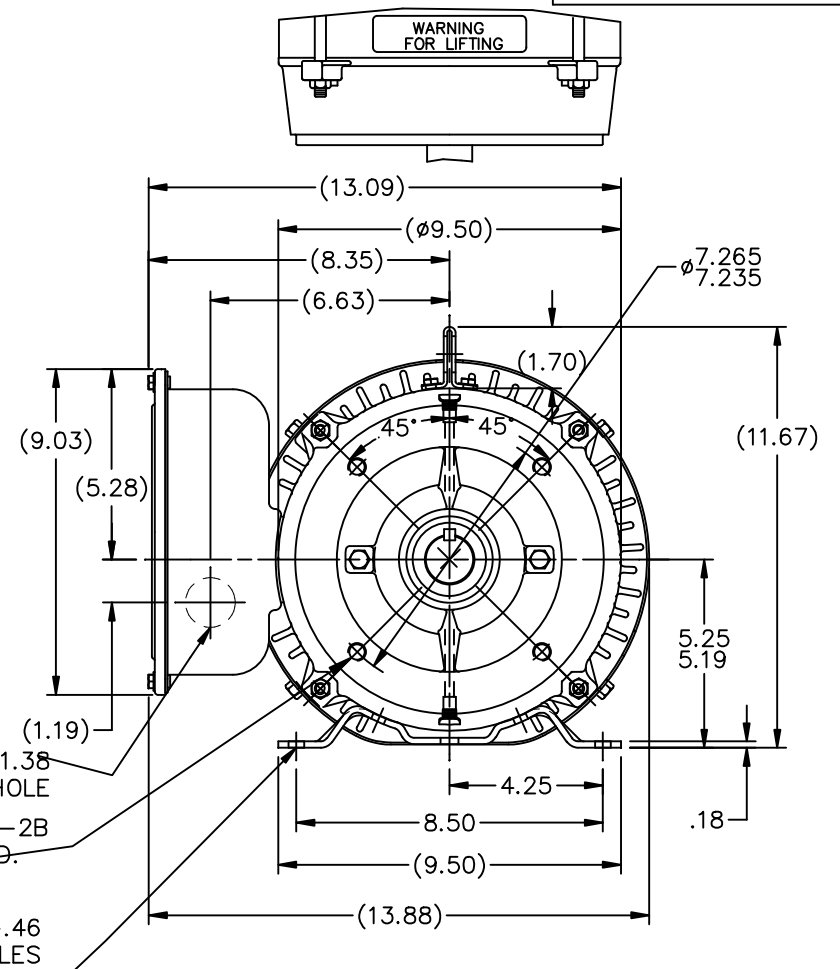
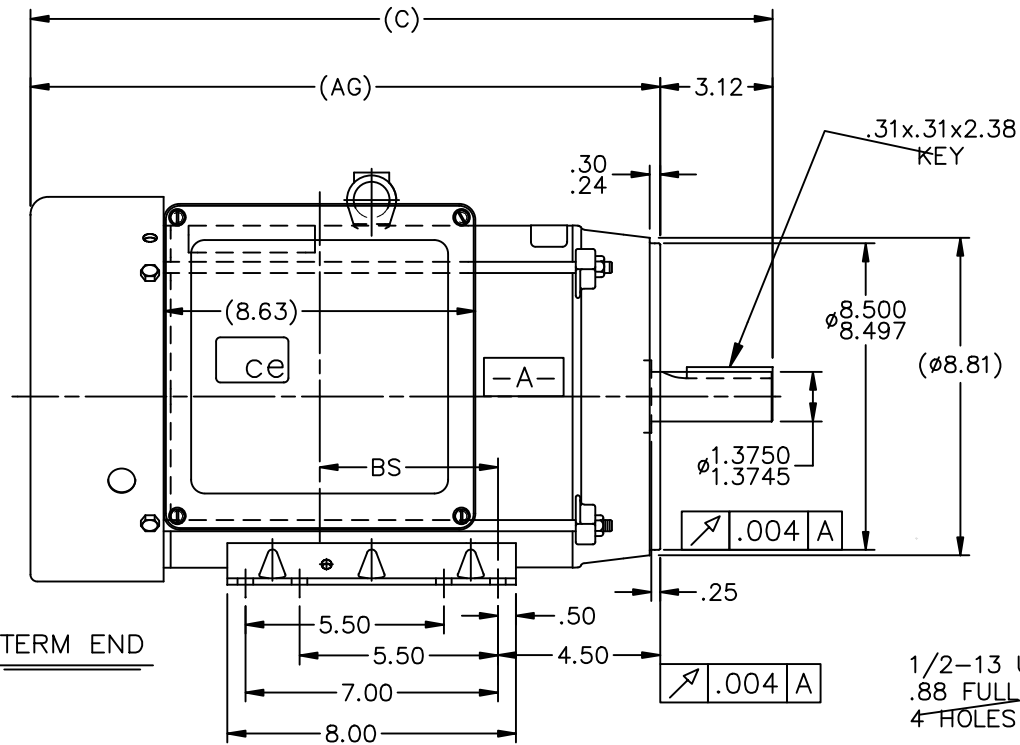


Nameplate Specifications

Output HP	7.50 Hp	Output KW	5.6 kW
Frequency	60 Hz	Voltage	208-230 V
Current	36.0-32.0 A	Speed	3465 rpm
Service Factor	1	Phase	1
Efficiency	81.5 %	Power Factor	93.5
Duty	Continuous	Insulation Class	F
Design Code	L	KVA Code	G
Frame	213TC	Enclosure	Totally Enclosed Fan Cooled
Thermal Protection	No Protection	Ambient Temperature	40 °C
Drive End Bearing Size	307	Opp Drive End Bearing Size	206
UL	Recognized	CSA	Y
CE	Y	IP Code	43
Number of Speeds	1		

Technical Specifications


Electrical Type	Capacitor Start Capacitor Run	Starting Method	Across The Line
Poles	2	Rotation	Selective Counterclockwise
Resistance Main	0 Ohms	Mounting	Rigid Base
Motor Orientation	Horizontal	Drive End Bearing	Ball
Opp Drive End Bearing	Ball	Frame Material	Rolled Steel
Shaft Type	T	Overall Length	19.07 in
Frame Length	9.65 in	Shaft Diameter	1.375 in
Shaft Extension	3.12 in	Assembly/Box Mounting	F1 ONLY
Outline Drawing	SS88690LE-965	Connection Drawing	EE9048MF-LE



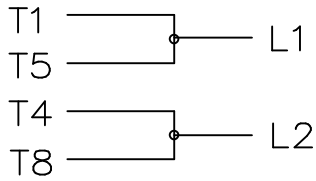
DASH	FR.	C	BS	AG
965	213T	19.07	3.44	15.95
1115	213/15T	20.57	4.94	17.45
1240	215T	21.82	6.19	18.70

NOTES:

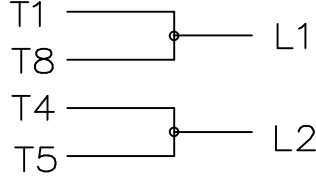
1. NAMEPLATE TO BE READ FROM C'BOX SIDE OF MOTOR.
2. DASH 965 TO BE READ FROM OPPOSITE SHAFT END

				TOLERANCES UNLESS SPECIFIED			ELECTRIC MOTORS GEARMOTORS AND DRIVES		DRAWN RJM 07-26-2002			
				DEC.	INCHES				CHK	ML	08-05-2002	
				.X	±.1				APPD	JPL	08-02-2002	
				.XX	±.03				TITLE OUTLINE		SCALE	3=16
2	ADDED NOTE 2 CN 31881	DRS 10-21-2002	ML	.XXX	±.005	210 FR. – TEFC – C’FACE – 1 PHASE		REF				
1	NEW DRAWING – DES/DEV	RJM 08-02-2002		.XXXX	±.0005	MAT’L.		FMF				
NO.	REVISION	BY & DATE	CHK	ANG	±7’30”	FINISH		PREV				
THIS DRAWING IN DESIGN AND DETAIL IS OUR PROPERTY AND MUST NOT BE USED EXCEPT IN CONNECTION WITH OUR WORK ALL RIGHTS OF DESIGN AND INVENTION ARE RESERVED THIS IS AN ELECTRONICALLY GENERATED DOCUMENT – DO NOT SCALE THIS PRINT			RFP		CAD FILE ss88690le			SIZE	DRAWING NO.	PAGE	OF	REV.
			DIST LB					A	SS88690LE		2	

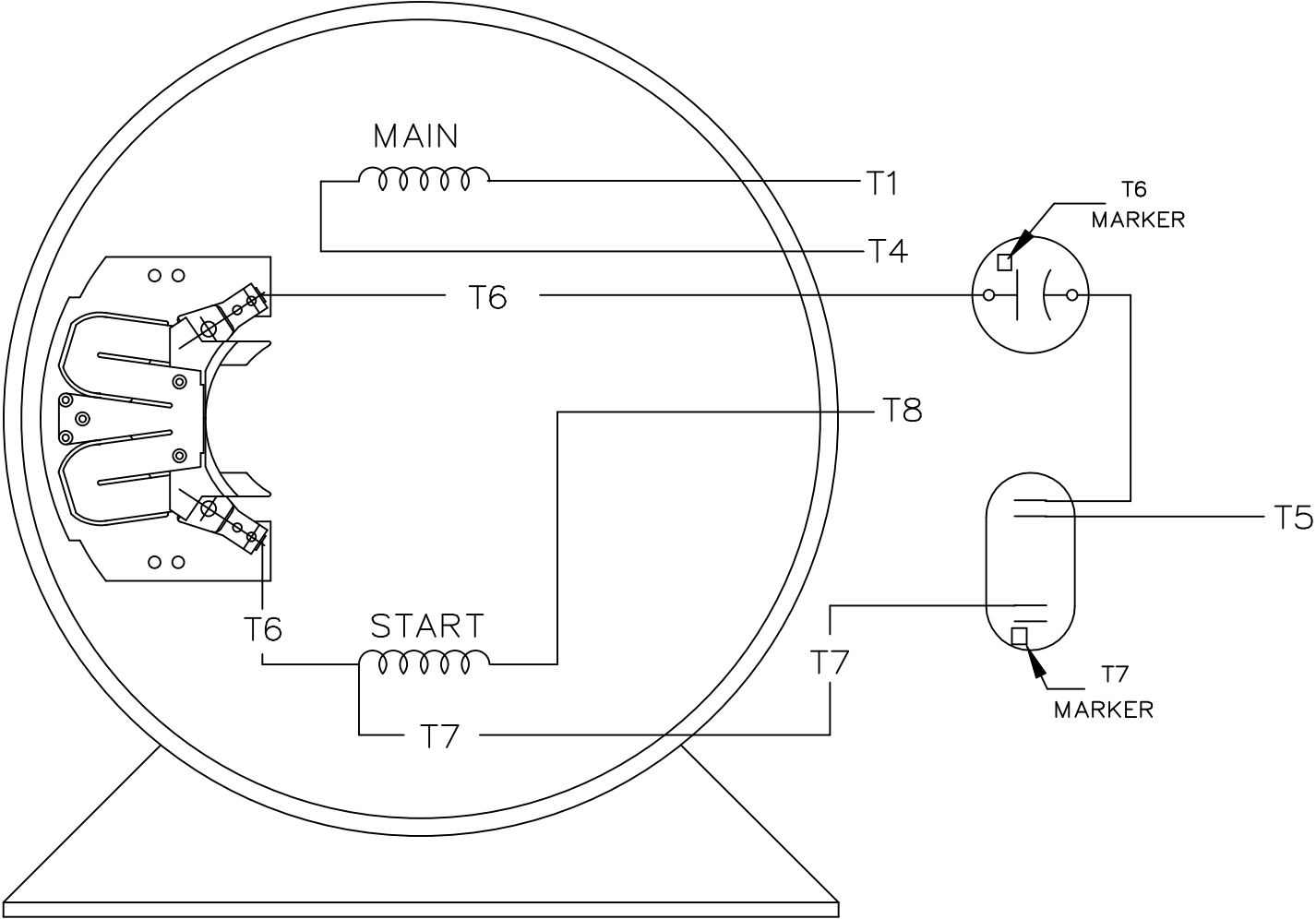
C.W. ROTATION




C.C.W. ROTATION



SINGLE VOLTAGE
CAPACITOR START
CAPACITOR RUN
REVERSIBLE



VIEW OF TERMINAL END

				TOLERANCES UNLESS SPECIFIED			ELECTRIC MOTORS GEARMOTORS AND DRIVES		DRAWN RJM 07-25-2002				
				DEC.	INCHES				CHK				
				.X	±.1				APPD				
				.XX	±.02				TITLE CONNECTION DIAGRAM 180-210 SWITCH			SCALE	1=1
				.XXX	±.005							REF	
1	NEW DRAWING – DES/DEV	RJM		.XXXX	±.0005	MAT'L.				FMF			
NO.	REVISION	BY & DATE	CHK	ANG	±7'30"	FINISH				PREV			
THIS DRAWING IN DESIGN AND DETAIL IS OUR PROPERTY AND MUST NOT BE USED EXCEPT IN CONNECTION WITH OUR WORK ALL RIGHTS OF DESIGN AND INVENTION ARE RESERVED THIS IS AN ELECTRONICALLY GENERATED DOCUMENT – DO NOT SCALE THIS PRINT			RFP		CAD FILE EE9048MF-LE				SIZE	DRAWING NO.	PAGE OF	REV.	
			DIST LB						A	EE9048MF-LE		1	



CERTIFICATION DATA SHEET

**1051 CHEYENNE AVE.
GRAFTON, WI 53024
PH. 262-377-8810**

CONN. DIAGRAM: EE9048MF-LE

CATALOG #: 140694.00

OUTLINE: SS88690LE-965

MOUNTING: F1 ONLY

WINDING #: BK10269 1

TYPICAL MOTOR PERFORMANCE DATA

HP	kW	SYNC. RPM	F.L. RPM	FRAME	ENCLOSURE	KVA CODE	DESIGN
7 1/2	5.60	3600	3465	213TC	TEFC	G	L

PH	Hz	VOLTS	AMPS	START TYPE	DUTY	INSL	S.F.	AMB°C
1	60	208-230	36-32	ACROSS THE LINE	CONTINUOUS	F4	1.0	40

FULL LOAD EFF:	81.5	3/4 LOAD EFF:	80.9	1/2 LOAD EFF:	77.8	GTD. EFF		ELEC. TYPE
FULL LOAD PF:	93.5	3/4 LOAD PF:	93	1/2 LOAD PF:	90.4	78.5		CAP START CAP RUN

F.L. TORQUE	LOCKED ROTOR AMPS	L.R. TORQUE	B.D. TORQUE	F.L. RISE°C
11.3 LB-FT	189	18.7 LB-FT 165 %	25.3 LB-FT 224 %	80

SOUND PRESSURE @ 3 FT.	SOUND POWER	ROTOR WK^2	MAX. WK^2	SAFE STALL TIME	STARTS / HOUR	APPROX. MOTOR WGT
78 dBA	88 dBA	0 LB-FT^2	0 LB-FT^2	10 SEC.	0	150 LBS.

*** SUPPLEMENTAL INFORMATION ***

DE BRACKET TYPE	ODE BRACKET TYPE	MOUNT TYPE	ORIENTATION	SEVERE DUTY	HAZARDOUS LOCATION	DRIP COVER	SCREENS	PAINT
C-FACE	STANDARD	RIGID	HORIZONTAL	FALSE	NONE	FALSE	NONE	BLUE - LEESON (ENAMEL)

BEARINGS		GREASE	SHAFT TYPE	SPECIAL DE	SPECIAL ODE	SHAFT MATERIAL	FRAME MATERIAL
DE	ODE						
BALL	BALL	POLYREX EM	T	NONE	NONE	AISI 1045 (C-240)	ROLLED STEEL
307	206						

THERMO-PROTECTORS				THERMISTORS	CONTROL	SPACE HEATERS
THERMOSTATS	PROTECTORS	WDG RTDs	BRG RTDs			
NONE	NOT	NONE	NONE	NONE	FALSE	NONE VOLTS

*

N

O

T

E

S

INVERTER TORQUE: NONE
INV. HP SPEED RANGE: NONE

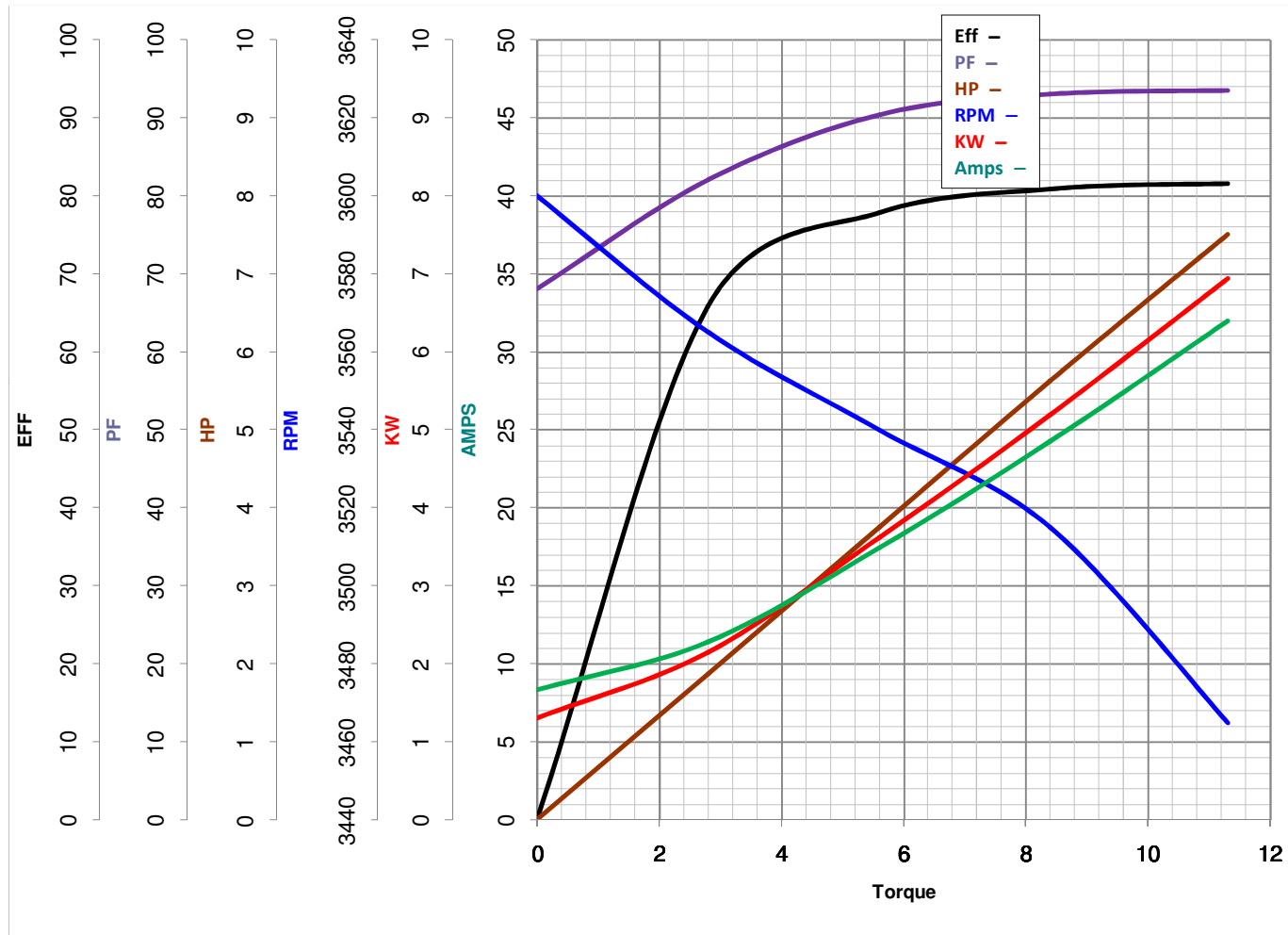
ENCODER: NONE
NONE NONE
NONE NONE PPR

BRAKE: NONE NONE
NONE P/N NONE
NONE NONE
FT-LB NONE V NONE Hz



LEESON ELECTRIC CORPORATION

TYPICAL PERFORMANCE CURVE for AC MOTOR

Model No 140694.00Curve at 230
60
7.5Volts
HZ
HPHP 7.50PHASE 1VOLTS 208-230HZ 60RPM 3465Catalog No 140694.00

Torque in Lb.Ft

FL TORQUE 11.3 Lb.Ft
 BD TORQUE 25.3 Lb.Ft
 LR TORQUE 18.7 Lb.Ft

FL AMPS 36-32
 PU TORQUE 22.5 Lb.Ft
 LR AMPS 189

WINDING BK10269-1

Date 3/21/2018

EC Declaration of Conformity

The undersigned representing
the manufacturer:

Regal Beloit America
100 East Randolph St.
Wausau, WI 54401

and the authorized representative
established within the Community:

Marathon Electric UK
6F Thistleton Road Ind. Estate
Market Overton
Oakham, Rutland LE15 7PP UK

are committed to providing customers with products that comply with applicable regulations and international protocols to which they are subject, including the requirements of the European Parliament Directive on the Harmonization of the laws relating to electrical equipment designed for use within certain voltage limits (2014/35/EU).

Regal Beloit America declares that the following product(s), to which this declaration relates, are in conformity with the relevant sections of the EC standards listed below.

This statement supersedes any statements previously issued pertaining to the product(s) listed below and is subject to change without notice.

Model No : 140694.00

(Model No. may contain prefix and/or suffix characters)

Catalog No : 140694.00

Rework No : N/A

Directives :

Low Voltage Directive 2014/35/EU

Harmonized Standards Used :

EN 60034-1: 2010 (IEC 60034-1: 2010)

EN 60034-5: 2001/A1:2007 (IEC 60034-5: 2000/A1:2006)

Authorized Representative:



Michael A. Logsdon
Vice President, Technology

Authorized Representative in the Community:



Julian Clark
Marketing Engineer

Created on 09/01/2022

CE 22