

PRODUCT INFORMATION PACKET



Model No: 140640.00

Catalog No: 140640.00

Crop Dryer Motor, 10 & 15 HP, 1 Ph, 60 & 60 Hz, 230 & 230 V, 3600 & 3600 RPM, 215TZ Frame, DP



Regal and Leeson are trademarks of Regal Rexnord Corporation or one of its affiliated companies.

©2023 Regal Rexnord Corporation, All Rights Reserved. MC017097E





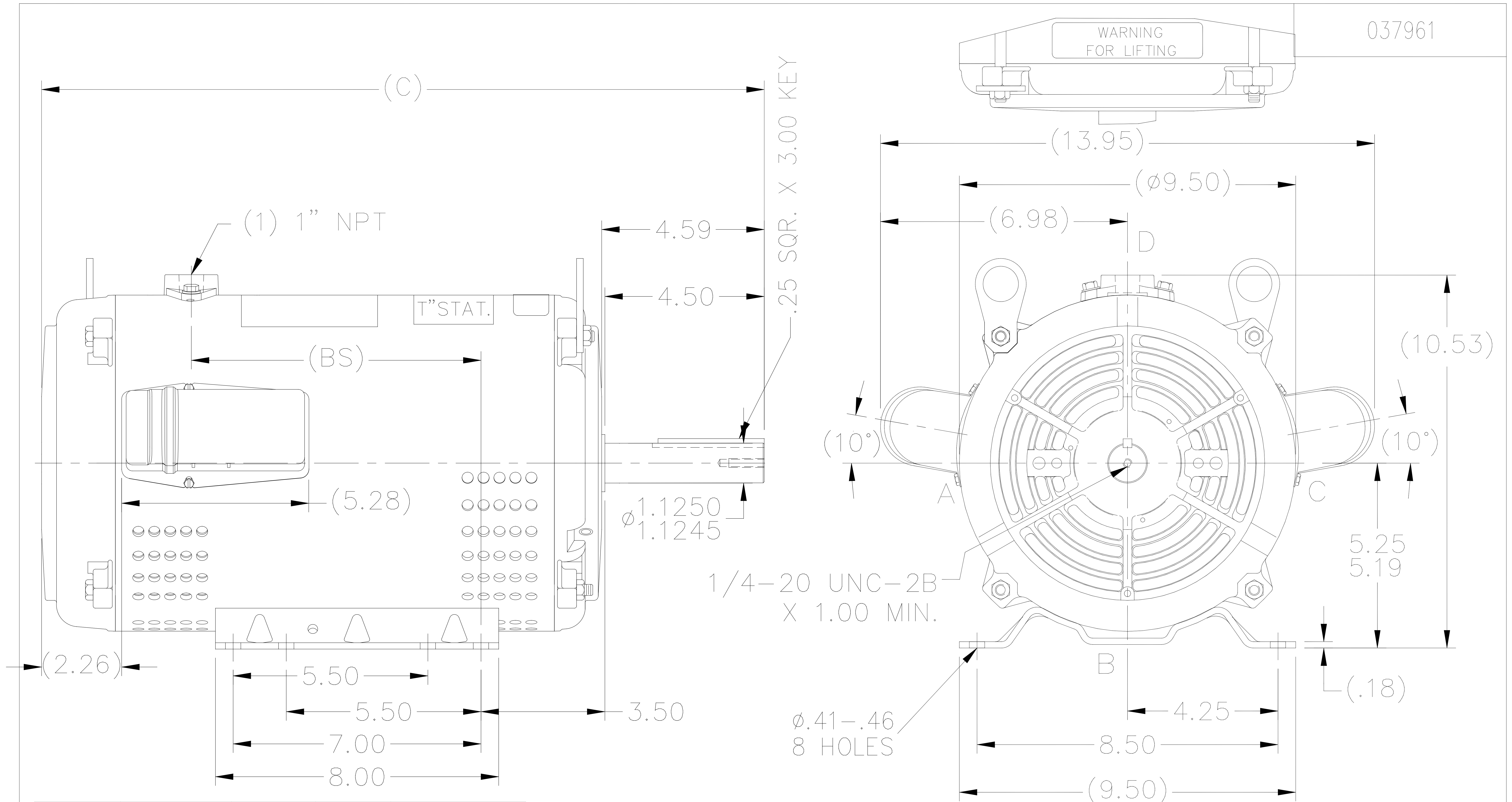
Nameplate Specifications

Phase	1	Output HP	10 & 15 Hp
Output KW	7.5 & 11.2 kW	Voltage	230 & 230 V
Speed	3520 & 3455 rpm	Service Factor	1.0 & 1.0
Frame	215TZ	Enclosure	Drip Proof
Thermal Protection	Thermostat	Efficiency	85.5 & 84 %
Ambient Temperature	40 °C	Frequency	60 & 60 Hz
Current	39.5 & 61.5 A	Power Factor	82
Duty	Continuous	Insulation Class	F
Design Code	L	KVA Code	E
Drive End Bearing Size	307	Opp Drive End Bearing Size	206
UL	Recognized	CSA	Y
CE	N	IP Code	22
Number of Speeds	1		

Technical Specifications

Electrical Type	Capacitor Start Capacitor Run	Starting Method	Across The Line
Poles	2	Rotation	Selective Counterclockwise
Resistance Main	.113 Ohms	Mounting	Rigid Base
Motor Orientation	Horizontal	Drive End Bearing	Ball
Opp Drive End Bearing	Ball	Frame Material	Rolled Steel
Shaft Type	Single Special Extension	Overall Length	20.42 in
Frame Length	12.40 in	Shaft Diameter	1.125 in
Shaft Extension	4.5 in	Assembly/Box Mounting	F3
Connection Drawing	A-EE9048PH-LE	Outline Drawing	037961-1240

037961



1/4-20 UNC-2B X 1.00 MIN.

ø.41-.46
8 HOLES

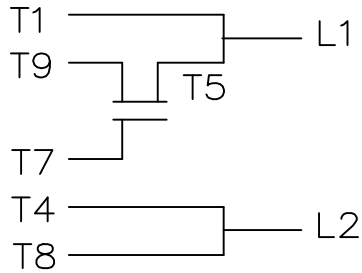
DASH	FR.	C	BS	MOUNTING
1240	213/15T	20.42	8.18	

NOTES:
 1. NAMEPLATE TO BE READ FROM 'A' SIDE OF MOTOR.
 2. SEE MODEL FOR LEAD LENGTH.

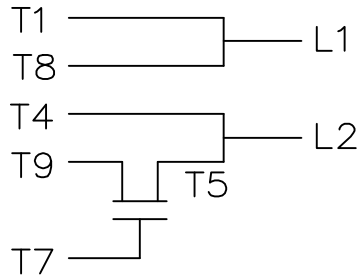
ORACLE	02
REV	

				TOLERANCES UNLESS SPECIFIED		LEESON	ELECTRIC MOTORS GEARMOTORS AND DRIVES	DRAWN LST 9/15/14		
				DEC.	INCHES			CHK		
C	ADD LIFTING LUGS ECO-0087439	LST	10/20/15	.XX	±.03	TITLE OUTLINE 210T FR. -BB-SS-DR.PR.-SINGLE PHASE	SCALE 1=4	APPD	-	
B	1" NPT WAS 3/4" NPT ECO 0076543	GWS	4/24/15	.XXX	±.005			REF	-	
A	RELEASED PER ECO-0053334	LST	9/15/14	.XXXX	±.0005			FMF	-	
NO.	REVISION	BY & DATE	CHK	ANG	±7'30"			FINISH	PREV	
THIS DRAWING IN DESIGN AND DETAIL IS OUR PROPERTY AND MUST NOT BE USED EXCEPT IN CONNECTION WITH OUR WORK ALL RIGHTS OF DESIGN AND INVENTION ARE RESERVED THIS IS AN ELECTRONICALLY GENERATED DOCUMENT - DO NOT SCALE THIS PRINT				RFP	CAD FILE 037699		SIZE	DRAWING NO.	PAGE OF	REV.
				DIST	LE		A	037961		C

C.W. ROTATION

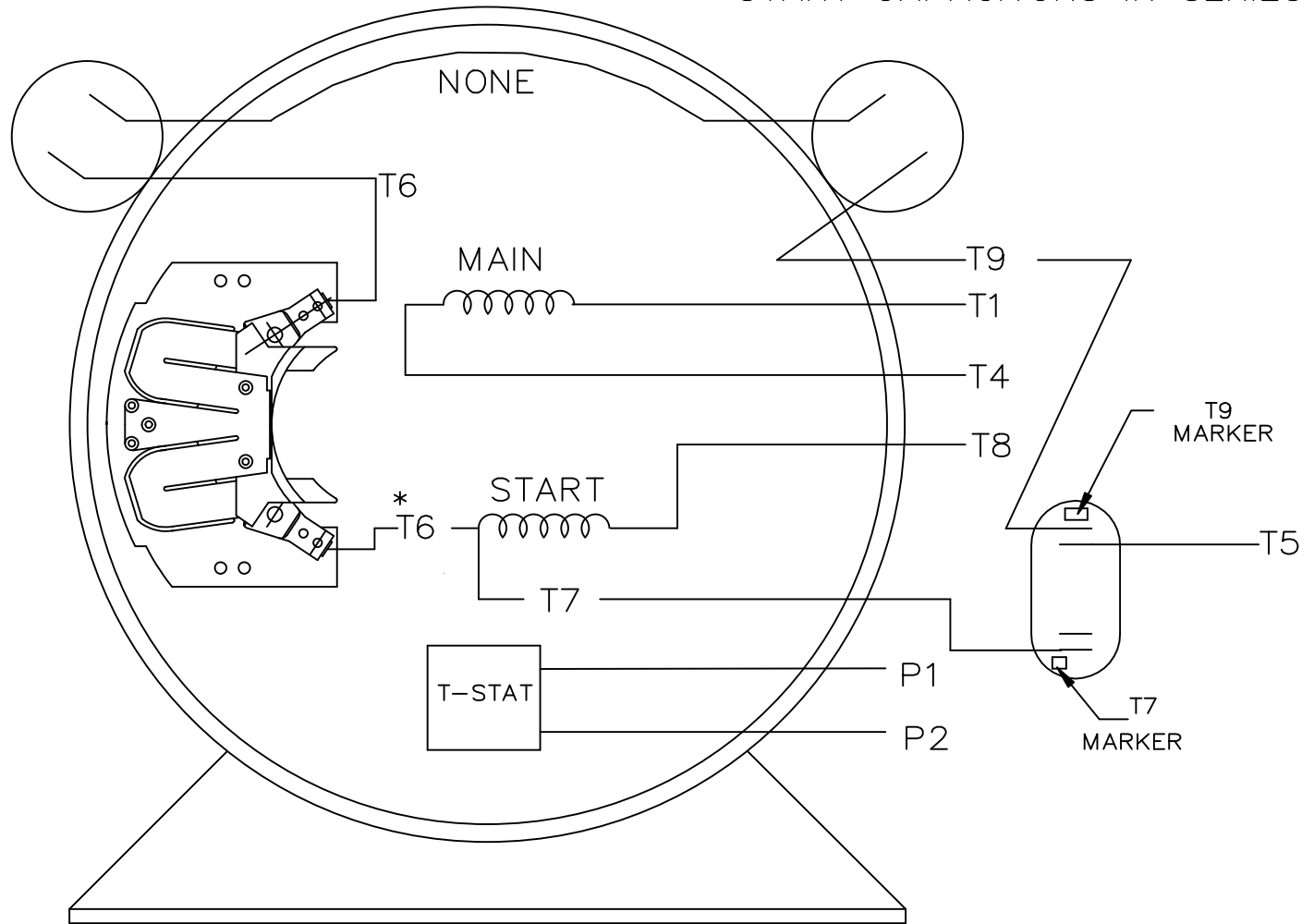


C.C.W. ROTATION



* THIS LEAD MAY BE WHITE

CONNECT:
START CAPACITORS IN SERIES



SINGLE VOLTAGE
CAPACITOR START
CAPACITOR RUN
REVERSIBLE

VIEW OF TERMINAL END

180 - 210 SWITCH

			TOLERANCES UNLESS SPECIFIED		LEESON	ELECTRIC MOTORS GEARMOTORS AND DRIVES	DRAWN HLB 09-22-2004		
			DEC.	INCHES			CHK ML 09-23-2004		
			.X	± -	TITLE		APPD JET 09-27-2004		
			.XX	± -			SCALE		
02	ADDED " * " NOTE, ISAAC 10-2838	KA 07/23/10	.XXX	± -	MAT'L.		REF		
01	"T-STAT" WAS "PROT" ,ISAAC 09-5096	KA 12/02/09	.XXXX	± -			FMF		
NO.	REVISION	BY & DATE	CHK	ANG	± -	FINISH	PREV		
THIS DRAWING IN DESIGN AND DETAIL IS OUR PROPERTY AND MUST NOT BE USED EXCEPT IN CONNECTION WITH OUR WORK ALL RIGHTS OF DESIGN AND INVENTION ARE RESERVED THIS IS AN ELECTRONICALLY GENERATED DOCUMENT - DO NOT SCALE THIS PRINT			RFP 09-27-2004	CAD FILE ee9048ph_le		SIZE A	DRAWING NO. EE9048PH-LE	PAGE OF	REV. 02
			DIST LB-LE						



**1051 CHEYENNE AVE.
GRAFTON, WI 53024
PH. 262-377-8810**

CERTIFICATION DATA SHEET

CONN. DIAGRAM: A-EE9048PH-LE
OUTLINE: 037961-1240
WINDING #: BK10270 DR 1

CATALOG #: 140640.00
MOUNTING: F3

TYPICAL MOTOR PERFORMANCE DATA

HP	kW	SYNC. RPM	F.L. RPM	FRAME	ENCLOSURE	KVA CODE	DESIGN
10&15	7.50&11.2	3600	3520&3455	215TZ	DP	E	L

PH	Hz	VOLTS	AMPS	START TYPE	DUTY	INSL	S.F.	AMB°C
1	60/60	230&230	39.5&61.5	ACROSS THE LINE	CONTINUOUS	F4	1.0/1.0	40

FULL LOAD EFF:	85.5&84	3/4 LOAD EFF:	85	1/2 LOAD EFF:	84	GTD. EFF	ELEC. TYPE
FULL LOAD PF:	82&94	3/4 LOAD PF:	93.5	1/2 LOAD PF:	90.5	82.5	CAP START CAP RUN

F.L. TORQUE	LOCKED ROTOR AMPS	L.R. TORQUE	B.D. TORQUE	F.L. RISE°C
22.7 LB-FT	322	36.2 LB-FT 159 %	48.3 LB-FT 213 %	38

SOUND PRESSURE @ 3 FT.	SOUND POWER	ROTOR WK^2	MAX. WK^2	SAFE STALL TIME	STARTS / HOUR	APPROX. MOTOR WGT
0 dBA	10 dBA	0.89 LB-FT^2	0.9 LB-FT^2	0 SEC.	0	162 LBS.

***** SUPPLEMENTAL INFORMATION *****

DE BRACKET TYPE	ODE BRACKET TYPE	MOUNT TYPE	ORIENTATION	SEVERE DUTY	HAZARDOUS LOCATION	DRIP COVER	SCREENS	PAINT
STANDARD	STANDARD	RIGID	HORIZONTAL	FALSE	NONE	FALSE	NONE	BLUE - LEESON (ENAMEL)

BEARINGS		GREASE	SHAFT TYPE	SPECIAL DE	SPECIAL ODE	SHAFT MATERIAL	FRAME MATERIAL
DE	ODE						
BALL	BALL	POLYREX EM	SGL SPL EXT	1.125 x 4.50 IN SEK	NONE	AISI 1045 (C-240)	ROLLED STEEL
307	206						

THERMO-PROTECTORS				THERMISTORS	CONTROL	SPACE HEATERS
THERMOSTATS	PROTECTORS	WDG RTDs	BRG RTDs			
TSTATS (N/C)	NOT	NONE	NONE	NONE	FALSE	NONE VOLTS

INVERTER TORQUE: NONE
INV. HP SPEED RANGE: NONE
ENCODER: NONE NONE NONE NONE NONE PPR
BRAKE: NONE NONE NONE P/N NONE NONE NONE NONE FT-LB NONE V NONE Hz

*
N
O
T
E
S
*



LEESON ELECTRIC CORPORATION
TYPICAL PERFORMANCE CURVE for AC MOTOR

Model No 140640.00

Catalog No 140640.00

Curve at 230
60
15

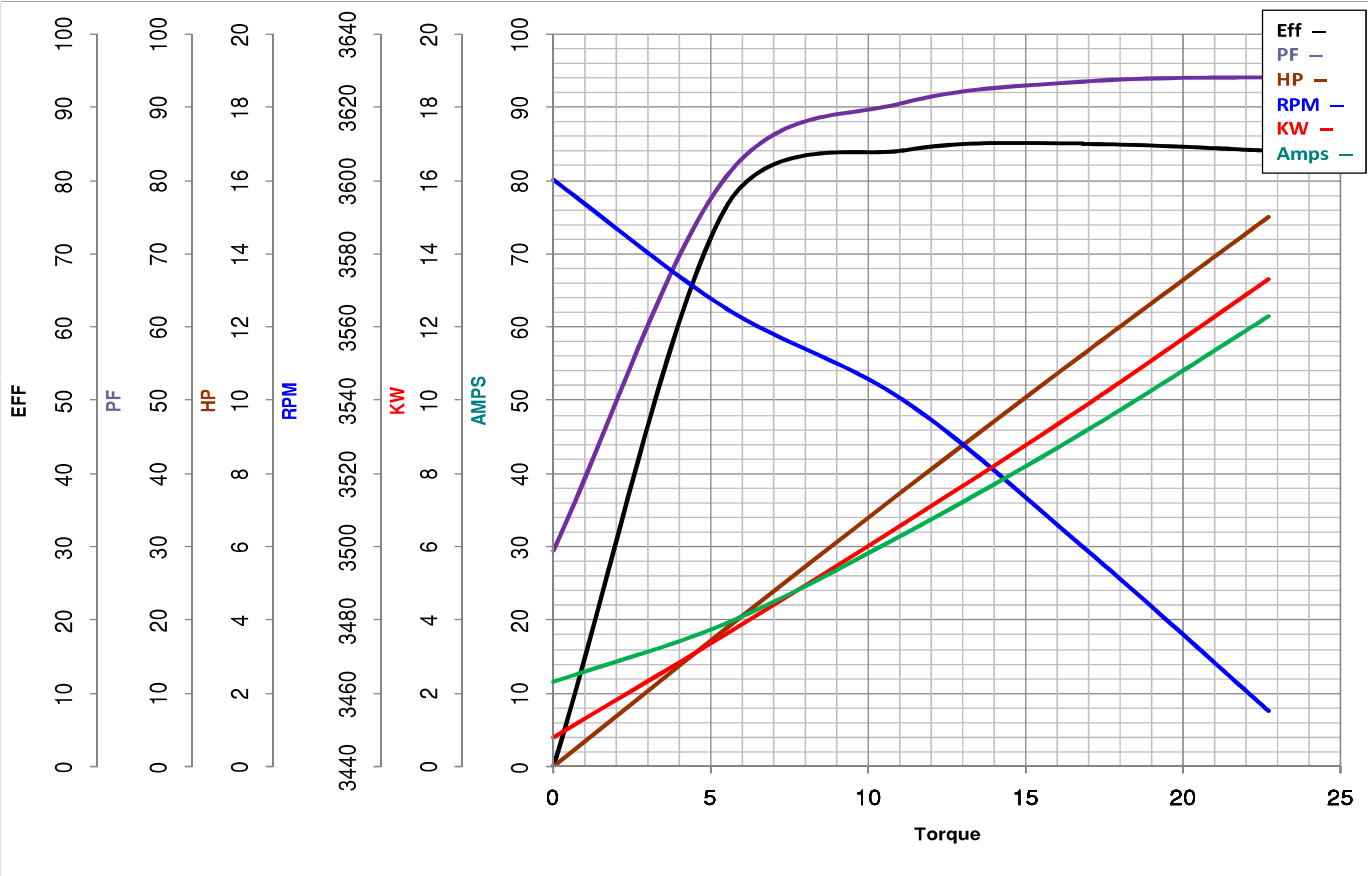
Volts
HZ
HP

HP 10&15
VOLTS 230&230

PHASE 1

HZ 60&60

RPM 3520&3455



Torque in Lb.Ft

FL TORQUE 22.7 Lb.Ft
BD TORQUE 48.3 Lb.Ft
LR TORQUE 36.2 Lb.Ft

FL AMPS 39.5
PU TORQUE 35.8 Lb.Ft
LR AMPS 322

WINDING BK10270-1

Date 3/11/2019