

PRODUCT INFORMATION PACKET



Model No: 140636.00

Catalog No: 140636.00

Brake Motor, 10 & 7.50 HP, 3 Ph, 60 & 50 Hz, 230/460 & 190/380 V, 1800 & 1500 RPM, 215T Frame, TEFC



Regal and Leeson are trademarks of Regal Rexnord Corporation or one of its affiliated companies.

©2023 Regal Rexnord Corporation, All Rights Reserved. MC017097E





Nameplate Specifications

| | | | |
|------------------------|------------------------------------|----------------------------|------------------------------------|
| Phase | 3 | Output HP | 10 & 7.50 Hp |
| Output KW | 7.5 & 5.6 kW | Voltage | 230/460 & 190/380 V |
| Speed | 1765 & 1460 rpm | Service Factor | 1.15 & 1.15 |
| Frame | 215T | Enclosure | Totally Enclosed Fan Cooled |
| Thermal Protection | No Protection | Efficiency | 91.7 & 91.7 % |
| Ambient Temperature | 40 °C | Frequency | 60 & 50 Hz |
| Current | 26.8/13.4 & 31.2/15.6 A | Power Factor | 77 |
| Duty | Continuous | Insulation Class | F |
| Design Code | B | KVA Code | H |
| Drive End Bearing Size | 6207 | Opp Drive End Bearing Size | 6206 |
| UL | Recognized | CSA | Y |
| CE | Y | IP Code | 43 |
| Number of Speeds | 1 | | |

Technical Specifications

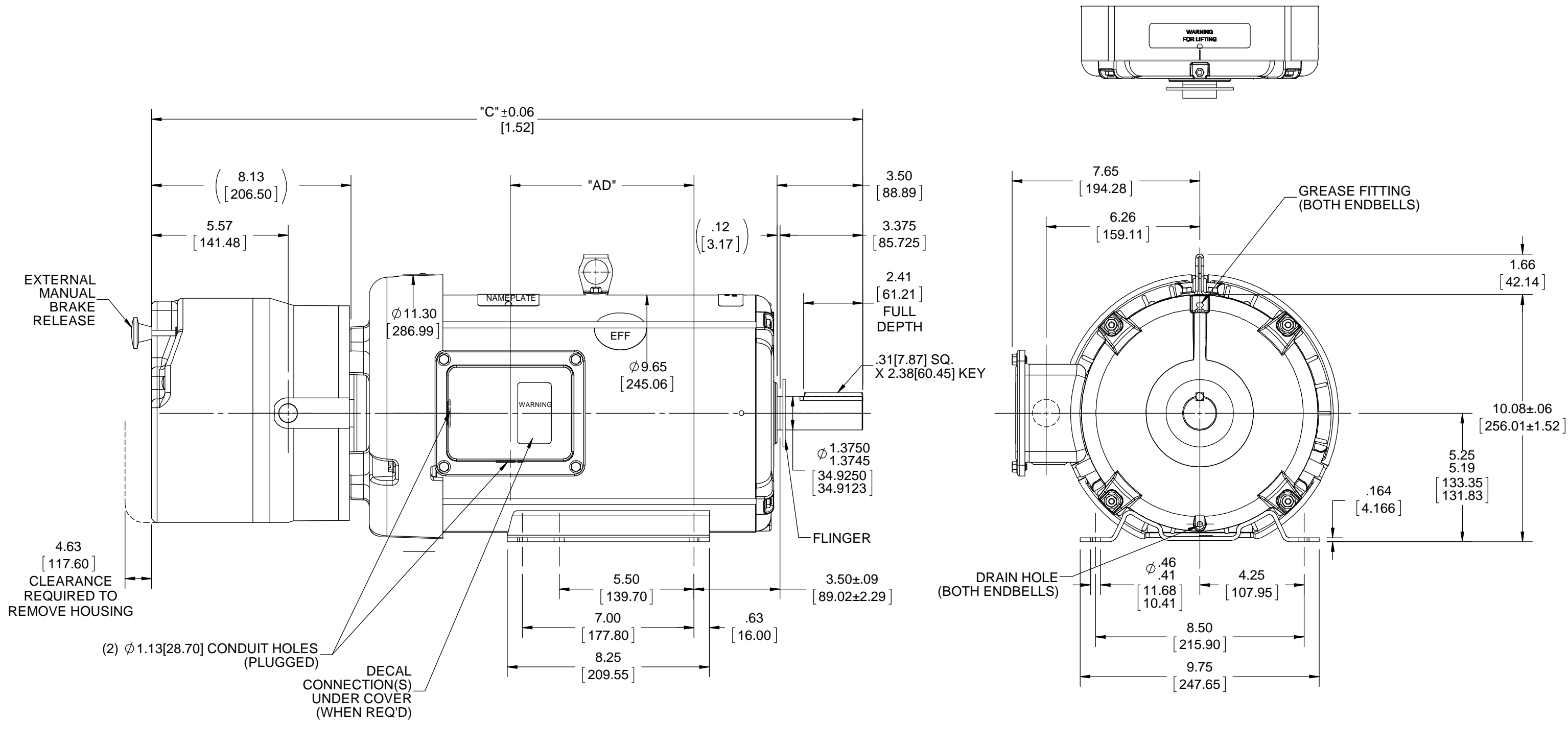
| | | | |
|-----------------------|------------------------------------|-----------------------|------------------------|
| Electrical Type | Squirrel Cage Induction Run | Starting Method | Across The Line |
| Poles | 4 | Rotation | Reversible |
| Resistance Main | .755 Ohms | Mounting | Rigid Base |
| Motor Orientation | Horizontal | Drive End Bearing | Ball |
| Opp Drive End Bearing | Ball | Frame Material | Rolled Steel |
| Shaft Type | T | Overall Length | 29.00 in |
| Frame Length | 13.00 in | Shaft Diameter | 1.375 in |
| Shaft Extension | 3.38 in | Assembly/Box Mounting | F1 ONLY |
| Outline Drawing | 038250-1300 | Connection Drawing | 005010.15 |

B

B

A

A

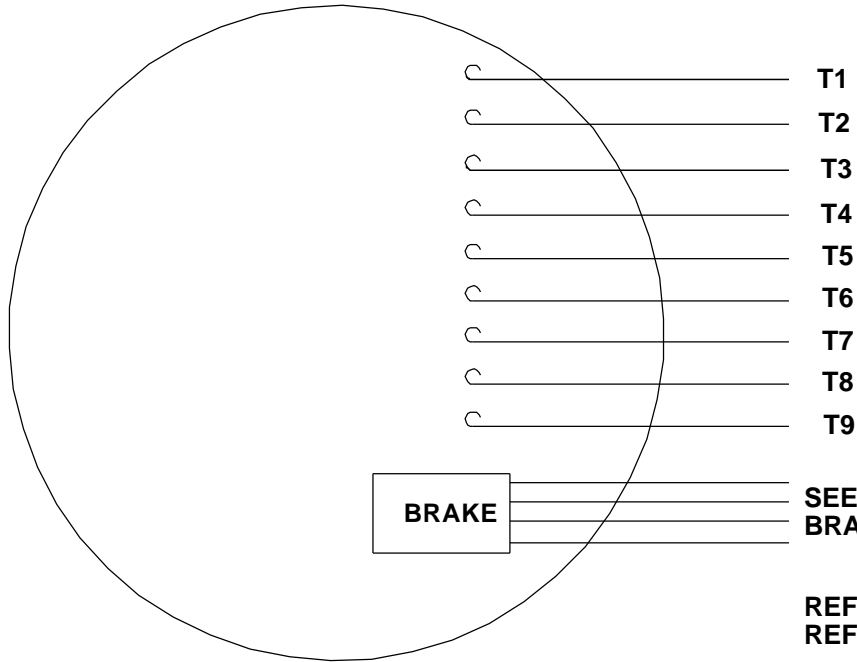


NOTE:-
1) GASKETS THROUGHOUT.

| | | | | | | |
|---|----------------|---------------|---|-------------------------|---|-----------------|
| DRAWING REVISION A | REVISION BY | DATE | TOLERANCES UNLESS OTHERWISE SPECIFIED: DEC. INCH mm ANGLE ±0.5° .X ±0.1 [±2.5] .XX ±0.03 [±0.76] .XXX ±0.005 [±0.127] .XXXX ±0.0005 [±0.0127] REMOVE BURRS & BREAK SHARP EDGES: .003/.015 [0.076/.381] X 45° CORNER FILLETS: R.02 [0.51] MACHINED SURFACES: 125 3.2 INCH mm mm SHOWN IN [BRACKETS] | DRAWN BY S SAHOO | Regal Beloit America, Inc. | |
| ECO ECO-0157674 | APPROVED BY | DATE | | DATE 11/12/2018 | | |
| ECO DESCRIPTION OUTLINE CONVERSION PROJECT <small>COPYRIGHT REGAL BELOIT AMERICA, INC. ALL RIGHTS RESERVED. PROPRIETARY AND CONFIDENTIAL INFORMATION - THIS DOCUMENT IS THE PROPERTY OF REGAL BELOIT AMERICA, INC. ("OWNER") AND CONTAINS OWNER'S PROPRIETARY INFORMATION. ANY PERSON, CORPORATION OR OTHER FIRM RECEIVING IT IS DEEMED, BY RECEIVING IT, TO AGREE THAT IT, AND/OR ANY PART OF IT, SHALL NOT BE DISCLOSED TO ANY PERSON, CORPORATION OR OTHER ENTITY, DUPLICATED, AND/OR USED, EXCEPT AS EXPRESSLY APPROVED IN WRITING IN ADVANCE BY OWNER. THIS DOCUMENT SHALL BE RETURNED TO OWNER UPON REQUEST. IT MAY BE SUBJECT TO CERTAIN RESTRICTIONS UNDER APPLICABLE EXPORT CONTROL LAWS AND REGULATIONS.</small> | | | | APPROVED BY S TAILOR | DESCRIPTION OUTLINE OUTLINE-210TC FRAME TEFC-RIGID | |
| DASH NO. | "C" | "AD" | DATE 12/03/2018 | REFERENCE 037632 | MATERIAL | PROCESS/FINISH |
| 1300 | 29.00 [736.59] | 7.50 [190.50] | THIRD ANGLE PROJECTION | SIZE B | DRAWING NUMBER 038250 | SHEET 1 OF 1 |

| | | |
|----------|----------------|---------------|
| DASH NO. | "C" | "AD" |
| 1300 | 29.00 [736.59] | 7.50 [190.50] |

VIEW FROM OUTSIDE OF MOTOR AT SWITCH END.

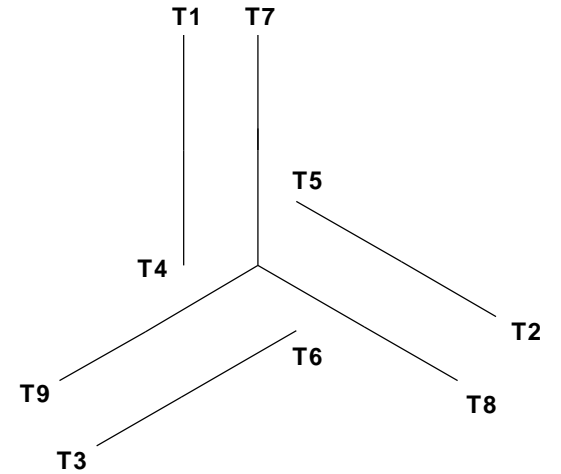


CAUTION:
LEAD WIRE INSULATION TO EXTEND
MINIMUM OF 1/4" INTO CONNECTOR
INSULATION

SEE TABLE FOR
 BRAKE CONNECTIONS

REF. DECAL (MOTOR) - 004014
 REF. DECAL (BRAKE) - 080034 (STEARNS & DINGS BRAKE)

LINE LEADS



| VOLTAGE | L1 | L2 | L3 | JOIN & INSULATE |
|---------|--------|--------|--------|----------------------------------|
| HIGH | T1 | T2 | T3 | (T4, T7) (T5, T8) (T6, T9) |
| LOW | T1, T7 | T2, T8 | T3, T9 | T4, T5, T6 |

RBC PROPRIETARY AND CONFIDENTIAL INFORMATION
 This document is the property of REGAL BELOIT CORPORATION ("RBC") including its subsidiaries and divisions and contains proprietary information of RBC. This document is loaned on the express condition that neither it nor the information contained therein shall be disclosed to others without the express written consent of RBC, and that the information shall be used by the recipient only as approved expressly by RBC. This document shall be returned to RBC upon its request. This document may be subject to certain restrictions under U.S. export control laws and regulations.

TYPE "T" W/O PROTECTOR

| VOLTAGE | BRAKE CONNECTION | | | STEARNS & DINGS BRAKE | | |
|---------|---------------------|---------------------|----------------------|-----------------------|------------------------|-----------------------|
| | L1 | L2 | Join | L1 | L2 | Join |
| HIGH | 1(REDF) | 2(REDF) | 3(BLACK) 4(BLACK) | 2(BLACK) | 4(YELLOW) | 1(YELLOW) 3(BLACK) |
| LOW | 1(REDF) 3(BLACK) | 2(REDF) 4(BLACK) | ----- | 2(BLACK) 3(BLACK) | 1(YELLOW) 4(YELLOW) | ----- |

| | | | | | | | | |
|------------------------|--|--------------|-------|-----------------------------|--|---|--------------------|---------|
| | | | | TOLERANCES UNLESS SPECIFIED | | ELECTRIC MOTORS GEARMOTORS AND DRIVES | DRAWN JJK 09/17/96 | |
| | | | | DEC | INCHES | | CHK | |
| | | | | .X | ±.1 | APPR | | |
| | | | | .XX | ±.01 | SCALE 1:1 | | |
| -- | REDRAWN IN SOLIDWORKS | VJB 02/08/11 | .XXX | ±.005 | TITLE EXTERNAL WIRING DIAGRAM STANDARD 3 PHASE - DUAL VOLTAGE | | REF 005010-01 | |
| 01 | ADDED DINGS AND BRAKE TABLE (PER CN114156) | TMZ 11/12/96 | .XXXX | ±.0005 | MAT'L W/STEARNS OR DINGS DUAL VOLTAGE BRAKE CONN. | | FMF | |
| NO | REVISION | BY & DATE | CHK | ANG | ±1/2° | FINISH LEESON STOCK | | PAGE OF |
| THIRD ANGLE PROJECTION | | | | RFP | PREV | SIZE | DRAWING NO | REV |
| | | | | NETWORK FILE NAME 00501015 | | A | 005010-15 | -- |

P.O. BOX 8003
 WAUSAU, WI 54401-8003
 PH. 715-675-3311



DATA VOLTS: 460

CERTIFICATION DATA SHEET

CONN. DIAGRAM: 005010.15
 OUTLINE: 037632-1300
 WINDING: T9497

CAT #: 140636.00

FR 3

TYPICAL MOTOR PERFORMANCE DATA

| HP | KW | SYNC RPM | FL RPM | FRAME | ENCLOSURE | TYPE | KVA CODE | DESIGN |
|----|-----|----------|--------|-------|-----------|------|----------|--------|
| 10 | 7.5 | 1800 | 1765 | 215T | TEFC | TFW | H | B |

| PH | HZ | VOLTS | AMPS | START TYPE | DUTY | INSL | S.F. | AMB | ELEV. |
|----|-------|-----------------|---------------------|-----------------|------|------|------|-----|-------|
| 3 | 60/50 | 230/460#190/380 | 26.8/13.4&31.2/15.6 | ACROSS THE LINE | CONT | F | 1.15 | 40 | 3300 |

| F.L. EFF | 91.7 | 3/4 LD EFF | 91.7 | 1/2 LD EFF | 90.6 | GTD EFF | ELECT. TYPE |
|----------|------|------------|------|------------|------|---------|-----------------|
| F.L. PF | 77.0 | 3/4 LD PF | 71.7 | 1/2 LD PF | 60.1 | 0.0 | SQ CAGE IND RUN |

| F.L. TORQUE | LR AMPS @ 460 V | L.R. TORQUE | B.D. TORQUE | F.L. RISE (°C) |
|-------------|-----------------|-----------------|-----------------|----------------|
| 29.8 LB-FT | 79.0 | 55.2 LB-FT 185% | 90.0 LB-FT 302% | 55 |

| PRESSURE @ 3 | POWER | ROTOR WK² | MAX. LOAD WK² | SAFE STALL TIME | STARTS/HOUR | MOTOR WGT |
|--------------|--------|-------------|---------------|-----------------|-------------|-----------|
| 62 dBA | 71 dBA | 1.16 LB-FT² | 1.2 LB-FT² | 0 SEC. | 5 | 0 LB. |

*** SUPPLEMENTAL INFORMATION ***

| DE BRACKET TYPE | ODE BRACKET TYPE | MOUNT TYPE | MOTOR ORIENTATION | SEVERE DUTY | HAZARDOUS LOCATION | DRIP COVER | SCREENS | PAINT |
|-----------------|------------------|------------|-------------------|-------------|--------------------|------------|---------|--------------------|
| STANDARD | BRAKE | RIGID | HORIZONTAL | NO | NONE | NO | NONE | JE - LEESON (ENAM) |

| BEARINGS | | GREASE | SHAFT TYPE | SPECIAL DE | SPECIAL ODE | SHAFT MATERIAL | FRAME MATERIAL |
|----------|------|------------|------------|------------|-------------|----------------|----------------|
| DE | ODE | POLYREX EM | T | NONE | NONE | NONE | ROLLED STEEL |
| BALL | BALL | | | | | | |
| 6207 | 6206 | | | | | | |

| THERMOSTATS | PROTECTORS | WDG RTD's | BRG RTD's | THERMISTORS | CONTROL | SPACE HEATERS |
|-------------|------------|-----------|-----------|-------------|---------|---------------|
| NONE | NOT | NONE | NONE | NONE | FALSE | NA |

| R1 (ohms/ph) | R2 (ohms/ph) | X1 (ohms/ph) | X2 (ohms/ph) | Xm (ohms/ph) | VIBRATION (in/sec) | FLOAT |
|--------------|--------------|--------------|--------------|--------------|--------------------|-------|
| 0 | 0 | 0 | 0 | 0 | 0.080 | ODE |

| | | | | | | |
|---------------------------------|---------------------------|--|--|--|--|--|
| * N O T E S * | INVERTER TORQUE: NONE | | | | | |
| | INV. HP SPEED RANGE: NONE | | | | | |
| | ENCODER: NONE | | | | | |
| | NONE | | | | | |
| | NONE | | | | | |

| | | | | | | |
|-----------------|------------------------------|--|--|--|--|--|
| DATE: 2/22/2018 | BRAKE: STEARNS | | | | | |
| | 87,000 NONE | | | | | |
| | FT-LB: 50 | | | | | |
| | VOLTAGE: 230/460-190/380 HZ: | | | | | |
| UL: Y | | | | | | |

Data Sheet

Date: 1/24/2018

140636.00



Data @ 460 V

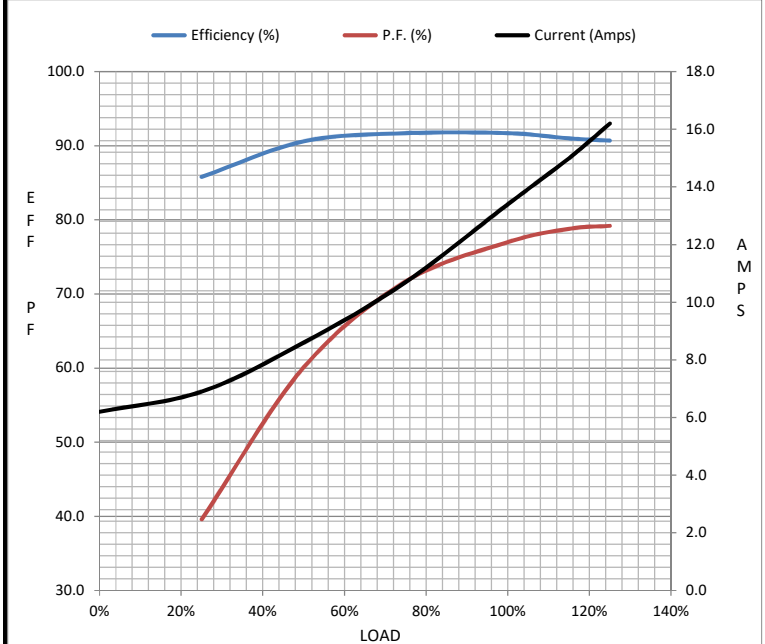
Motor Load Data

| Load | 0% | 25% | 50% | 75% | 100% | 115% | 125% | LR |
|----------------|------|------|------|------|------|------|------|------|
| Current (Amps) | 6.2 | 6.9 | 8.6 | 10.7 | 13.4 | 15.0 | 16.2 | 79.0 |
| Torque (ft-lb) | 0.00 | 7.4 | 17.4 | 22.2 | 29.8 | 34.2 | 37.4 | 55.2 |
| RPM | 1800 | 1793 | 1784 | 1774 | 1765 | 1758 | 1754 | 0 |
| Efficiency (%) | | 85.8 | 90.6 | 91.7 | 91.7 | 91.0 | 90.7 | |
| P.F. (%) | 6.1 | 39.6 | 60.1 | 71.7 | 77.0 | 78.8 | 79.2 | 0.0 |

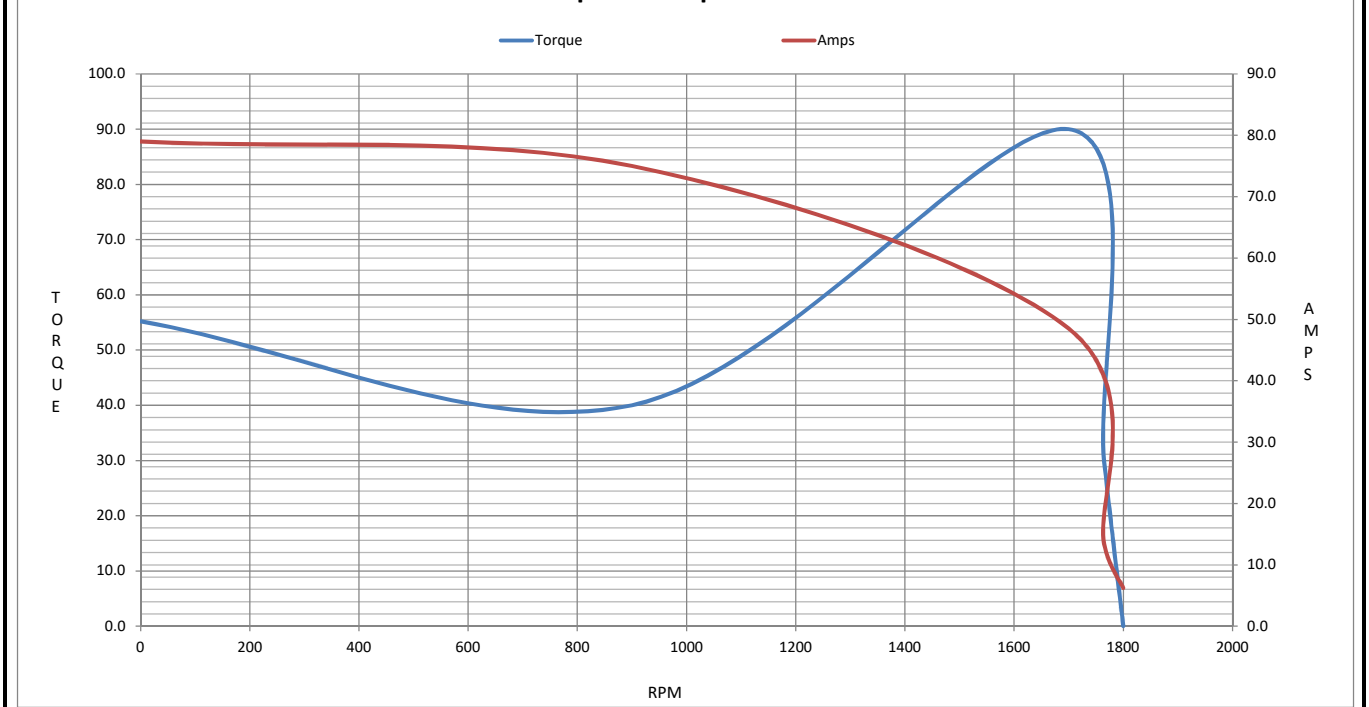
Motor Speed Data

| | LR | Pull-Up | BD | Rated | Idle |
|----------------|------|---------|------|-------|------|
| Speed (RPM) | 0 | 900 | 1700 | 1765 | 1800 |
| Current (Amps) | 79.0 | 75.0 | 48.5 | 13.4 | 6.2 |
| Torque (ft-lb) | 55.2 | 40.0 | 90.0 | 29.8 | 0.00 |

| Information Block | | | | |
|-----------------------------|-------------------------|--------|--------|--------|
| HP | 10.0 | | | |
| Sync. RPM | 1800 | | | |
| Frame | 210 | | | |
| Enclosure | TEFC | | | |
| Construction | TFW | | | |
| Voltage | 230/460#190/380 V | | | |
| Frequency | 60 Hz | | | |
| Design | B | | | |
| LR Code letter | H | | | |
| Service Factor | 1.15 | | | |
| Temp Rise @ FL | 55 °C | | | |
| Duty | CONT | | | |
| Ambient | 40 °C | | | |
| Elevation | 1,000 feet | | | |
| Rotor/Shaft wk ² | 1.16 Lb-Ft ² | | | |
| Ref Wdg | T9497 FR | | | |
| Sound Pressure @ 1M | 62 dBA | | | |
| VFD Rating | NONE | | | |
| Outline Dwg | 037632-1300 | | | |
| Conn. Diag | 005010.15 | | | |
| Additional Specifications: | | | | |
| 0 | | | | |
| 193316.60 | | | | |
| EQUIV CKT (OHMS / PHASE) | | | | |
| R1 | R2 | X1 | X2 | Xm |
| 0.0000 | 0.0000 | 0.0000 | 0.0000 | 0.0000 |



Speed - Torque Curve



EC Declaration of Conformity

The undersigned representing
the manufacturer:

Regal Beloit America
100 East Randolph St.
Wausau, WI 54401

and the authorized representative
established within the Community:

Marathon Electric UK
6F Thistleton Road Ind. Estate
Market Overton
Oakham, Rutland LE15 7PP UK

are committed to providing customers with products that comply with applicable regulations and international protocols to which they are subject, including the requirements of the European Parliament Directive on the Harmonization of the laws relating to electrical equipment designed for use within certain voltage limits (2014/35/EU).

Regal Beloit America declares that the following product(s), to which this declaration relates, are in conformity with the relevant sections of the EC standards listed below.

This statement supersedes any statements previously issued pertaining to the product(s) listed below and is subject to change without notice.

Model No : 140636.00

(Model No. may contain prefix and/or suffix characters)

Catalog No : 140636.00

Rework No : N/A

Directives :

Low Voltage Directive 2014/35/EU

Harmonized Standards Used :

EN 60034-1: 2010 (IEC 60034-1: 2010)

EN 60034-5: 2001/A1:2007 (IEC 60034-5: 2000/A1:2006)

Authorized Representative:



Michael A. Logsdon
Vice President, Technology

Authorized Representative in the Community:



Julian Clark
Marketing Engineer

Created on 09/01/2022

CE 22