

PRODUCT INFORMATION PACKET

Model No: 140518.00

Catalog No: 140518.00

SOLETE - REPLACED BY -G151809.22 - 3HP..860RPM.215.TEFC.230/460V.3PH.60HZ.CONT.NOT.40C.1.15SF.RIG
D.GENERAL PURPOSE.C215T8FB5C

Regal and are trademarks of Regal Rexnord Corporation or one of its affiliated companies.
©2022 Regal Rexnord Corporation, All Rights Reserved. MC017097E



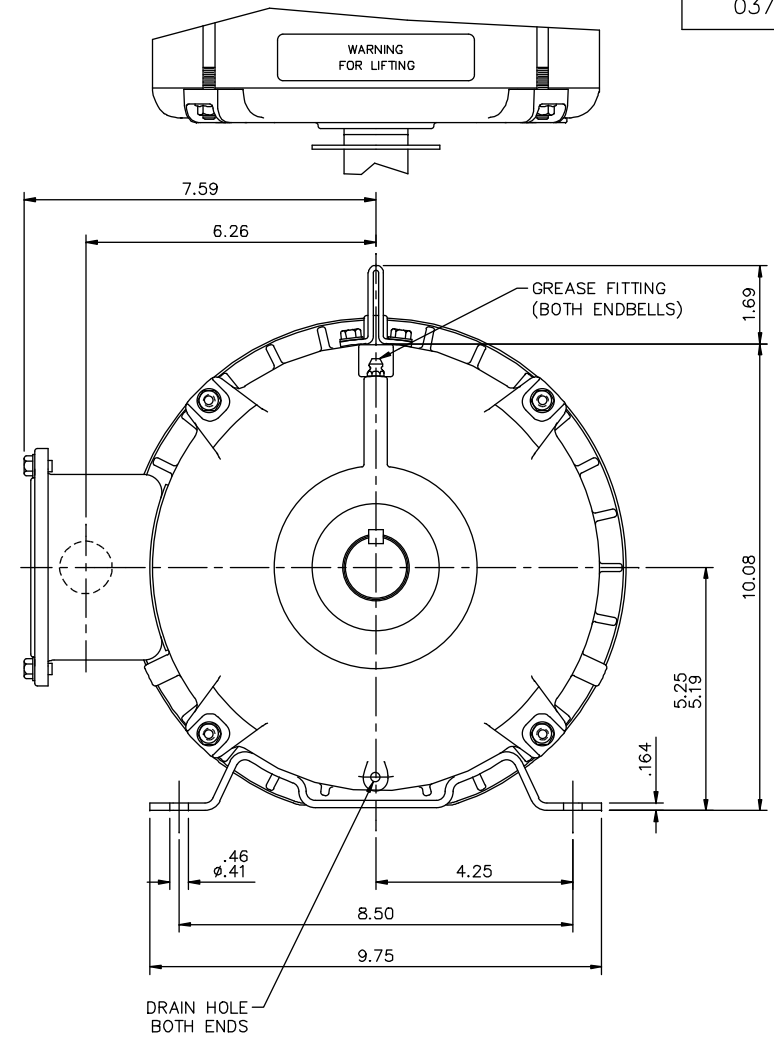
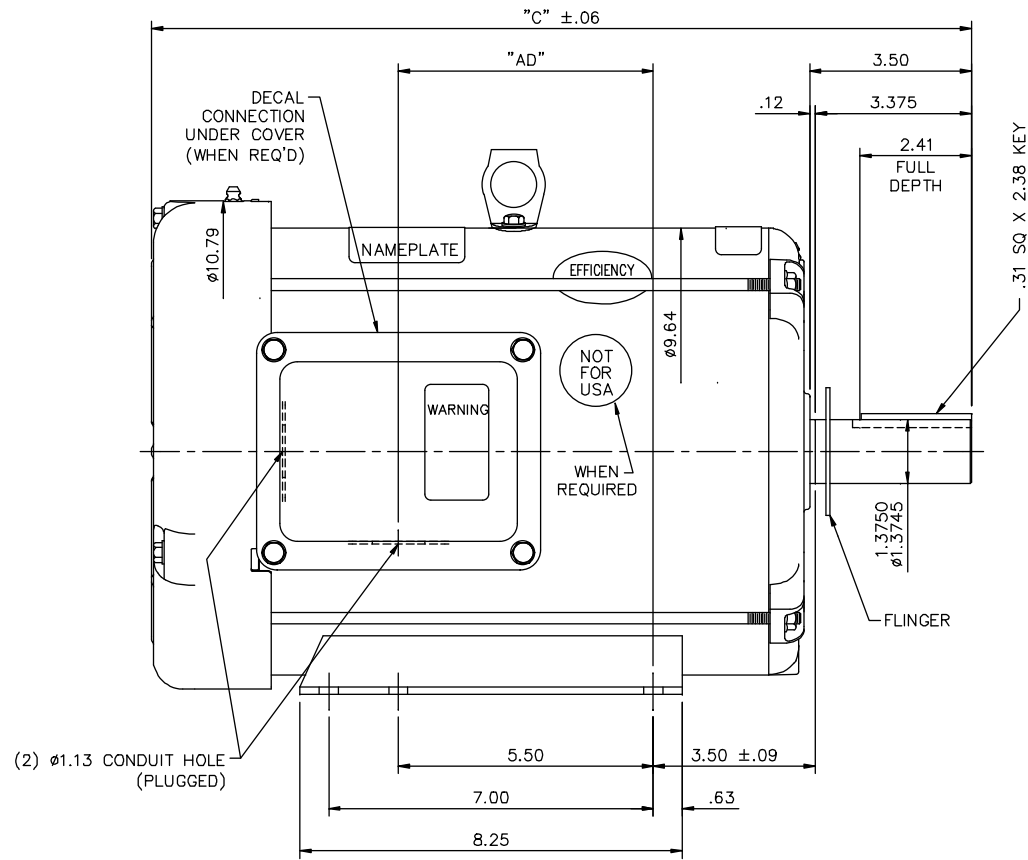
Nameplate Specifications

Output HP	3 Hp	Output KW	2.2 kW
Frequency	60 Hz	Voltage	230/460 V
Current	12.6/6.3 A	Speed	860 rpm
Service Factor	1.15	Phase	3
Efficiency	78.5 %	Power Factor	57
Duty	Continuous	Insulation Class	F
Design Code	B	KVA Code	H
Frame	215T	Enclosure	Totally Enclosed Fan Cooled
Thermal Protection	No Protection	Ambient Temperature	40 °C
Drive End Bearing Size	6207	Opp Drive End Bearing Size	6206
UL	Recognized	CSA	Y
CE	Y	IP Code	43
Number of Speeds	1		

Technical Specifications

Electrical Type	Squirrel Cage Induction Run	Starting Method	Across The Line
Poles	8	Rotation	Reversible
Resistance Main	.88 Ohms	Mounting	Rigid Base
Motor Orientation	Nan	Drive End Bearing	Ball
Opp Drive End Bearing	Ball	Frame Material	Rolled Steel
Shaft Type	T	Assembly/Box Mounting	NAN
Outline Drawing	037599-1050	Connection Drawing	005010.01

This is an uncontrolled document once printed or downloaded and is subject to change without notice. Date Created:07/18/2022

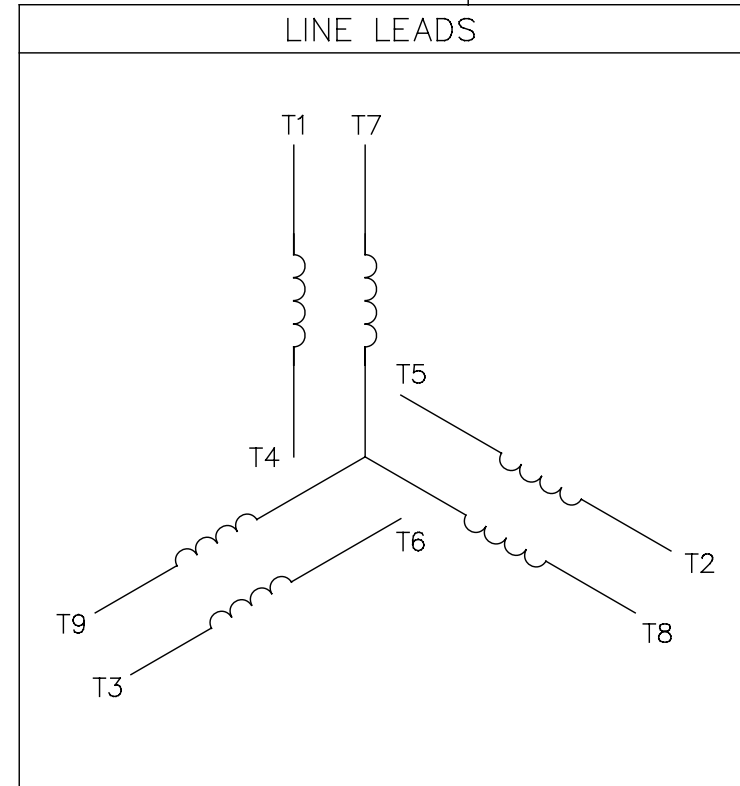


DASH NO.	"C"	"AD"
1050	17.20	5.00
1100	17.70	5.50
1150	18.20	6.00
1200	18.70	6.50
1250	19.20	7.00
1300	19.70	7.50


				TOLERANCES UNLESS SPECIFIED	LEESON	ELECTRIC MOTORS GEARMOTORS AND DRIVES	DRAWN RDW 9/25/02	
				DEC. INCHES			CHK	
				.X ±.1	TITLE	OUTLINE — 210T FRAME TEFC — RIGID	APPD SW 9/25/02	
02	ADDED WHEN REQ'D TO NOT FOR USA DECAL ECR004364	UD 9/23/13	SR .XXX ±.005	.XX ±.03			SCALE 3=8	
01	NOT FOR USA DECAL ADDED	UD 4/19/12	SR .XXXX ±.0005				REF	
NO.	REVISION	BY & DATE	CHK	ANG	FINISH		PREV	
	THIS DRAWING IN DESIGN AND DETAIL IS OUR PROPERTY AND MUST NOT BE USED EXCEPT IN CONNECTION WITH OUR WORK ALL RIGHTS OF DESIGN AND INVENTION ARE RESERVED THIS IS AN ELECTRONICALLY GENERATED DOCUMENT — DO NOT SCALE THIS PRINT				RFP 9/25/02	CAD FILE 037599	SIZE B	DRAWING NO. 037599
					DIST NLV			REV. 02

005010-01

VIEW FROM OUTSIDE OF MOTOR AT SWITCH END.



VOLTAGE	L1	L2	L3	JOIN & INSULATE
HIGH	T1	T2	T3	(T4,T7) (T5,T8) (T6,T9)
LOW	T1,T7	T2,T8	T3,T9	T4,T5,T6

				TOLERANCES UNLESS SPECIFIED		 Regal Beloit America, Inc.			DRAWN RDW 04/12/02		
				DEC.	INCHES				CHK		
				.X	±.1				APPD		
				.XX	±.01				SCALE 1=1		
				.XXX	±.005	TITLE EXTERNAL WIRING DIAGRAM 3 PHASE W/O PROTECTOR			REF FIG.2-51		
A	UPDATED TO REGAL LOGO	SAJ 06/26/15	AJY	.XXXX	±.0005				MAT'L. DECAL - 004014		
NO.	REVISION	BY & DATE	CHK	ANG	±1/2"	FINISH			PREV		
THIS DRAWING IN DESIGN AND DETAIL IS OUR PROPERTY AND MUST NOT BE USED EXCEPT IN CONNECTION WITH OUR WORK ALL RIGHTS OF DESIGN AND INVENTION ARE RESERVED THIS IS AN ELECTRONICALLY GENERATED DOCUMENT - DO NOT SCALE THIS PRINT			RFP		04/12/02		CAD FILE 00501001		SIZE	DRAWING NO.	REV.
			DIST		BRF-NLV			A	005010-01		A