

PRODUCT INFORMATION PACKET



Model No: 140447.00

Catalog No: 140447.00

Definite Purpose Motor, 7.50 & 1.88 HP, 3 Ph, 60 & 60 Hz, 460 & 460 V, 1800 & 1800 RPM, 215T Frame,
TEFC



Regal and Leeson are trademarks of Regal Rexnord Corporation or one of its affiliated companies.

©2023 Regal Rexnord Corporation, All Rights Reserved. MC017097E



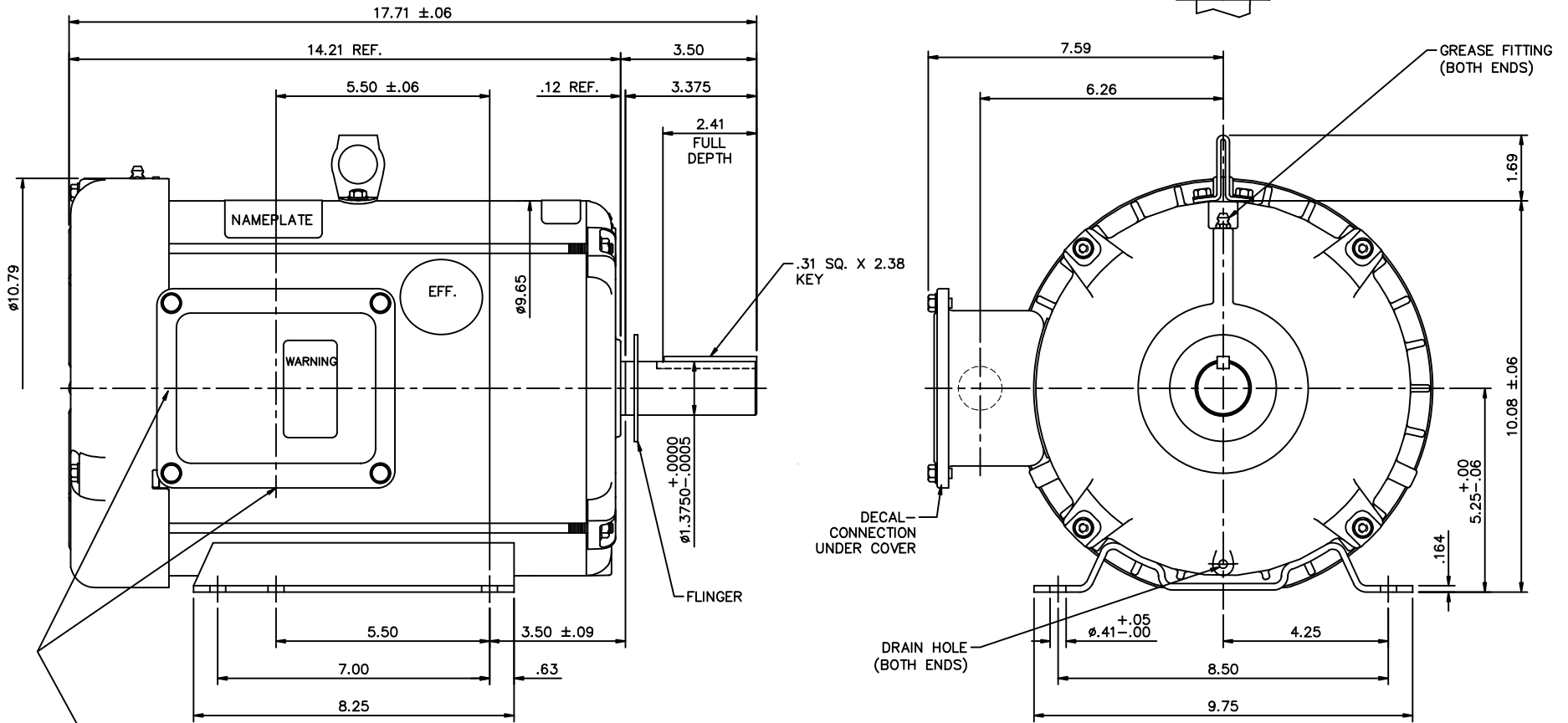


Nameplate Specifications

Phase	3	Output HP	7.50 & 1.88 Hp
Output KW	5.6 & 1.4 kW	Voltage	460 & 460 V
Speed	1740 & 860 rpm	Service Factor	1.0 & 1.0
Frame	215T	Enclosure	Totally Enclosed Fan Cooled
Thermal Protection	No Protection	Efficiency	85.5 & 80 %
Ambient Temperature	40 °C	Frequency	60 & 60 Hz
Current	9.7 & 3.3 A	Power Factor	87.4
Duty	Continuous	Insulation Class	F
Design Code	NO DESIGN CODE	KVA Code	J
Drive End Bearing Size	6207	Opp Drive End Bearing Size	6206
UL	Recognized	CSA	Y
CE	N	IP Code	43
Number of Speeds	1		

Technical Specifications

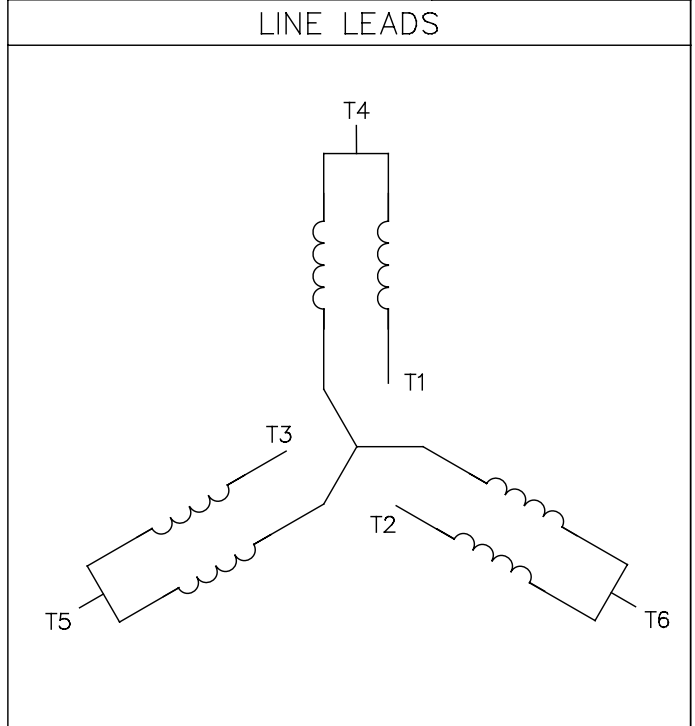
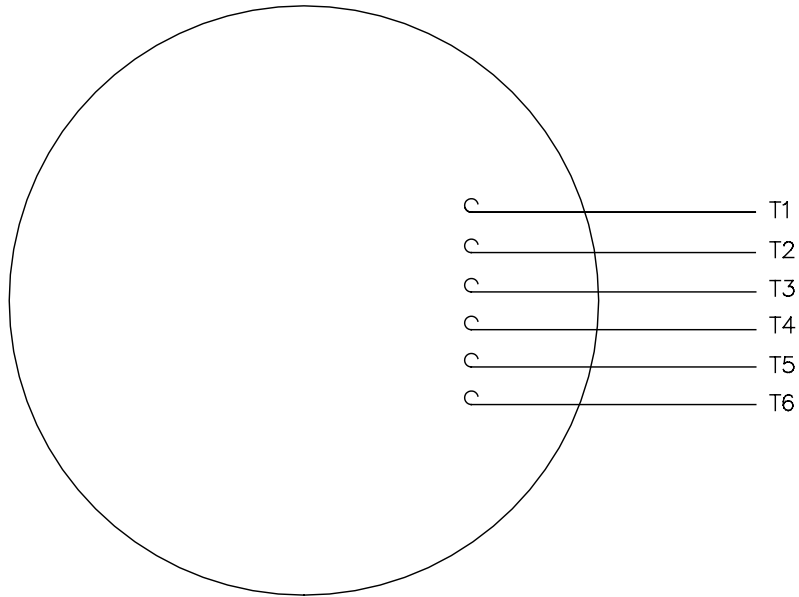
Electrical Type	Squirrel Cage Induction Run	Starting Method	Across The Line
Poles	4	Rotation	Reversible
Resistance Main	0 Ohms	Mounting	Rigid Base
Motor Orientation	Horizontal	Drive End Bearing	Ball
Opp Drive End Bearing	Ball	Frame Material	Rolled Steel
Shaft Type	T	Overall Length	17.71 in
Frame Length	11.00 in	Shaft Diameter	1.375 in
Shaft Extension	3.38 in	Assembly/Box Mounting	F1/F2 CAPABLE
Connection Drawing	005200.01	Outline Drawing	OL140447



				TOLERANCES UNLESS OTHERWISE SPECIFIED			LEESON ELECTRIC CORPORATION			
				DEC.	INCHES	METRIC				
02	UPDATED PER MT2 CONVERSION	LST 6/9/10		.X	±.1	±2.5	DRAWN RDW 05/09/00	TITLE OUTLINE - L215T FRAME		
01	REMOVED "LEESON" FROM CONDUIT BOX COVER	BPW 05/16/01		.XX	±.03	±.76	APPR. DWF 05/09/00	TEFC - RIGID MOUNT		
	EFF. 07/31/01			.XXX	±.005	±.127	R.F.P. 05/09/00	MAT'L.		
NO.	REVISION	BY & DATE	CH'K'D.	.XXXX	±.0005	±.0127	SCALE 3=8	NLV		
THIS DRAWING IN DESIGN AND DETAIL IS OUR PROPERTY AND MUST NOT BE USED EXCEPT IN CONNECTION WITH OUR WORK. ALL RIGHTS OF DESIGN AND INVENTION ARE RESERVED. THIS IS AN ELECTRONICALLY GENERATED DOCUMENT - DO NOT SCALE THIS PRINT.				FRACTIONS	±1/64	REF.	037511	FINISH STANDARD	REV. 02	DRAWING NO. OL140447
				ANGLES	±1/2°	FMF				

005200-01

VIEW FROM OUTSIDE OF MOTOR AT SWITCH END.



SPEED	L1	L2	L3	JOIN	SEPARATE
HIGH	T6	T4	T5	(T1,T2,T3)	
LOW	T1	T2	T3		(T4)(T5) (T6)

				TOLERANCES UNLESS OTHERWISE SPECIFIED		REGAL TM Regal Beloit America, Inc.	
				DECIMALS			
				.00	± .01	DRAWN PG 08/08/83	
04	SPEED WAS VOLTAGE	EPB	1/17/00	.000	± .005	CH'K'D. DLL 08/09/83	
03	REDRAWN TO CURRENT STANDARDS	DBT	05/30/97	.0000	± .0005	APPR. KG 08/09/83	
NO.	REVISION	BY	DATE	FRACTIONS	± 1/64	SCALE 1=1	
THIS DRAWING IN DESIGN AND DETAIL IS OUR PROPERTY AND MUST NOT BE USED EXCEPT IN CONNECTION WITH OUR WORK ALL RIGHTS OF DESIGN AND INVENTION ARE RESERVED				ANGLES	± 1/2°	REF. 080066	
				INCH/MM		FIMF 83648D1	
						TITLE EXTERNAL WIRING DIAGRAM TYPE "T" W/O PROTECTOR	
						MAT'L. DECAL - 004183/080066	
						2 SPEED 1 WDG. VARIABLE TORQUE MOTOR	



CERTIFICATION DATA SHEET

**1051 CHEYENNE AVE.
GRAFTON, WI 53024
PH. 262-377-8810**

CONN. DIAGRAM: 005200.01

CATALOG #: 140447.00

OUTLINE: OL140447

MOUNTING: F1/F2 CAPABLE

WINDING #: T9(4-8)11 FR 2 A

TYPICAL MOTOR PERFORMANCE DATA

HP	kW	SYNC. RPM	F.L. RPM	FRAME	ENCLOSURE	KVA CODE	DESIGN
7 1/2&1.9	5.60&1.42	900	1740&860	215T	TEFC	J	NO DESIGN CODE

PH	Hz	VOLTS	AMPS	START TYPE	DUTY	INSL	S.F.	AMB°C
3	60/60	460&460	9.7&3.3	ACROSS THE LINE	CONTINUOUS	F4	1.0/1.0	40

FULL LOAD EFF:	85.5&80	3/4 LOAD EFF:	80	1/2 LOAD EFF:	76.6	GTD. EFF		ELEC. TYPE	
FULL LOAD PF:	87.4&63	3/4 LOAD PF:	56.3	1/2 LOAD PF:	45.6	-20		SQ CAGE IND RUN	

F.L. TORQUE	LOCKED ROTOR AMPS	L.R. TORQUE	B.D. TORQUE	F.L. RISE°C
11.4 LB-FT	13.8	15.5 LB-FT 136 %	25.2 LB-FT 221 %	0

SOUND PRESSURE @ 3 FT.	SOUND POWER	ROTOR WK^2	MAX. WK^2	SAFE STALL TIME	STARTS / HOUR	APPROX. MOTOR WGT
0 dBA	10 dBA	0 LB-FT^2	0.8 LB-FT^2	10 SEC.	0	0 LBS.

***** SUPPLEMENTAL INFORMATION *****

DE BRACKET TYPE	ODE BRACKET TYPE	MOUNT TYPE	ORIENTATION	SEVERE DUTY	HAZARDOUS LOCATION	DRIP COVER	SCREENS	PAINT
STANDARD	STANDARD	RIGID	HORIZONTAL	FALSE	NONE	FALSE	NONE	BLUE - LEESON (ENAMEL)

BEARINGS		GREASE	SHAFT TYPE	SPECIAL DE	SPECIAL ODE	SHAFT MATERIAL	FRAME MATERIAL
DE	ODE						
BALL	BALL	POLYREX EM	T	NONE	NONE	AISI 1045 (C-240)	ROLLED STEEL
6207	6206						

THERMO-PROTECTORS				THERMISTORS	CONTROL	SPACE HEATERS
THERMOSTATS	PROTECTORS	WDG RTDs	BRG RTDs			
NONE	NOT	NONE	NONE	NONE	FALSE	NONE VOLTS

*
N
O
T
E
S

INVERTER TORQUE: NONE
INV. HP SPEED RANGE: NONE
ENCODER: NONE
NONE NONE
NONE NONE PPR
BRAKE: NONE NONE
NONE P/N NONE
NONE NONE
NONE FT-LB NONE V NONE HZ

Data Sheet

Date: 1/24/2018

140447.00



Data @ **460 V**

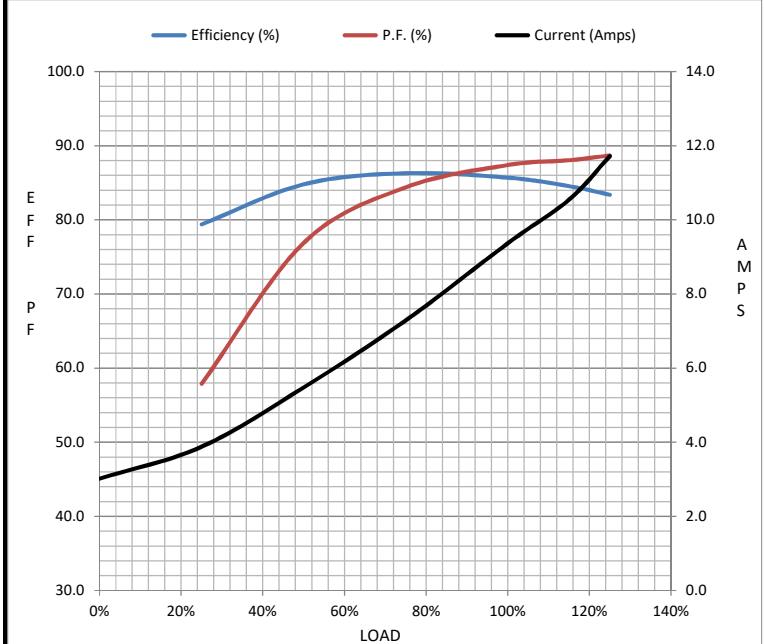
Motor Load Data

Load	0%	25%	50%	75%	100%	115%	125%	LR
Current (Amps)	3.0	3.9	5.5	7.3	9.4	10.5	11.7	62.0
Torque (ft-lb)	0.00	5.6	11.3	16.9	22.5	25.3	28.1	51.0
RPM	1800	1787	1775	1762	1748	1,741	1730	0
Efficiency (%)		79.4	84.8	86.3	85.7	84.6	83.4	
P.F. (%)	12.3	57.9	76.9	84.4	87.4	88.1	88.7	0.0

Motor Speed Data

	LR	Pull-Up	BD	Rated	Idle
Speed (RPM)	0	200	1340	1748	1800
Current (Amps)	62.0	57.0	37.2	9.4	3.0
Torque (ft-lb)	51.0	48.0	68.0	22.5	0.00

Information Block				
HP	7.5			
Sync. RPM	1800			
Frame	210			
Enclosure	TEFC			
Construction	NA			
Voltage	460 V			
Frequency	60 Hz			
Design	B			
LR Code letter	J			
Service Factor	1.0			
Temp Rise @ FL	93 °C			
Duty	CONT			
Ambient	40 °C			
Elevation	1,000 feet			
Rotor/Shaft wk ²	0.00 Lb-Ft ²			
Ref Wdg	T9(4-8)11 FR			
Sound Pressure @ 1M	0 dBA			
VFD Rating	NONE			
Outline Dwg	OL140447			
Conn. Diag	005200.01			
Additional Specifications:				
0				
0				
EQUIV CKT (OHMS / PHASE)				
R1	R2	X1	X2	Xm
0.0000	0.0000	0.0000	0.0000	0.0000



Speed - Torque Curve

